

Supplemental Figures

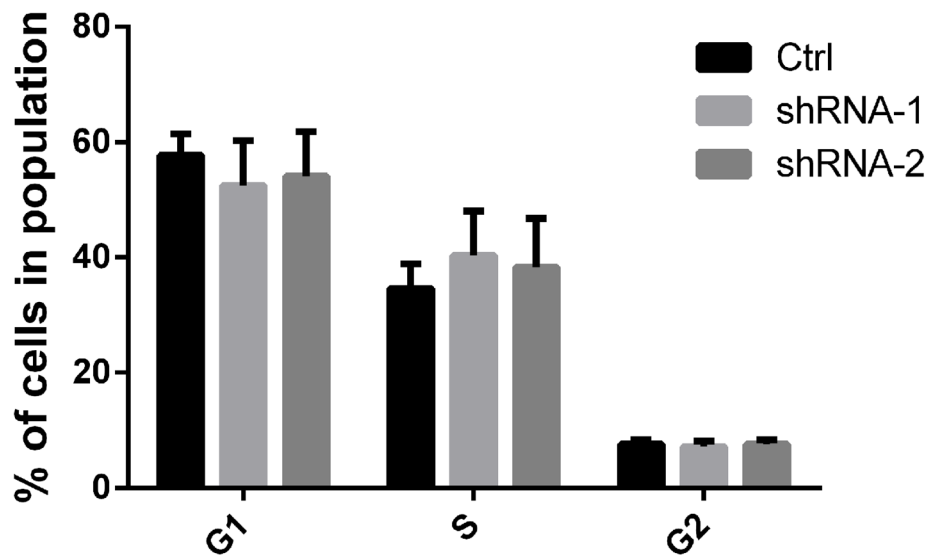


Figure S1. IRF8 knockdown did not change the distribution of DLBCL cells in each phase of cell cycle. The percentage of cells at each phase of cell cycle was analyzed using flow cytometry for OCI-Ly01 cells with or without IRF8 knockdown. Data shown were from three independent experiments (mean \pm SD). There were no statistically significant differences in the distribution of cells in each phase between IRF8-knockdown cells and control cells ($P > 0.05$).

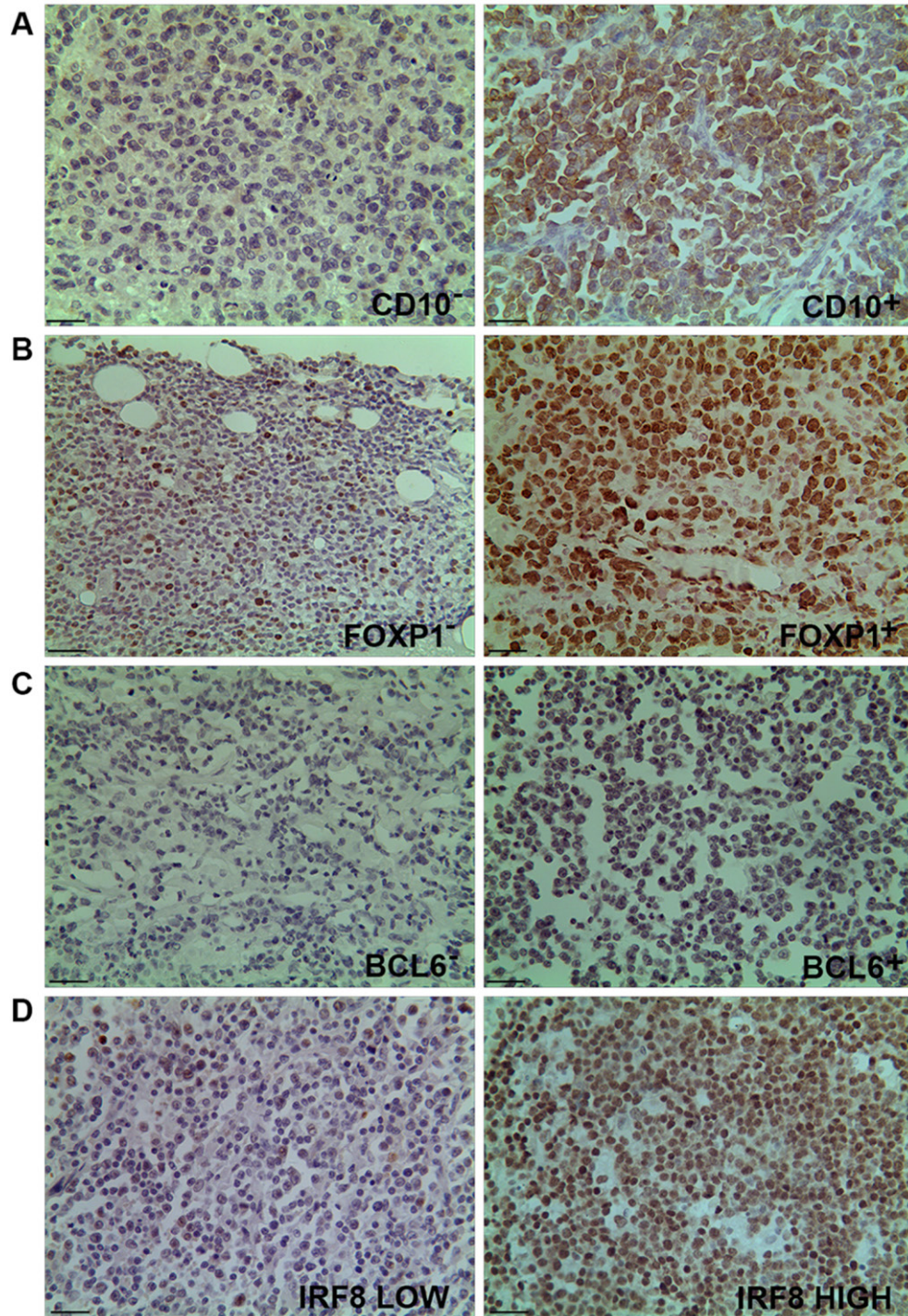


Figure S2. Immunohistochemical analyses of DLBCL tumor tissues for molecular subtyping using Visco-Young algorithm. Representative images (400 X) of immunohistochemical (IHC) staining using specific antibodies for CD10, FOXP1, BCL6, and IRF8 are shown. For each CD10, FOXP1, and BCL6, a positive sample and a

negative sample are shown. For IRF8, a sample with low levels of IRF8 and a sample with high levels of IRF8 are shown. The scale bar in each image represents 20 μm .