

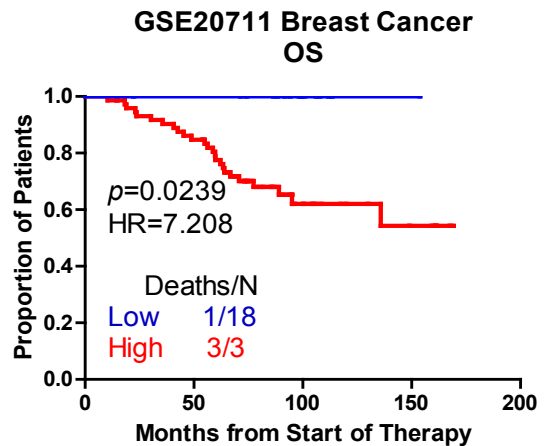
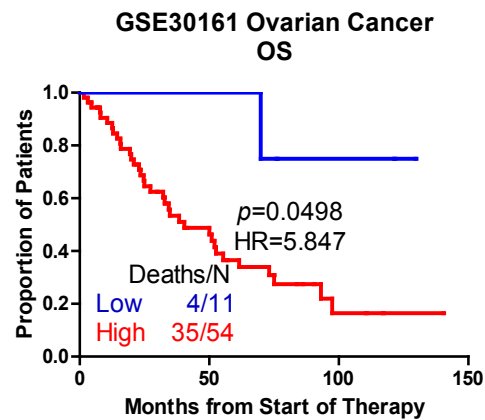
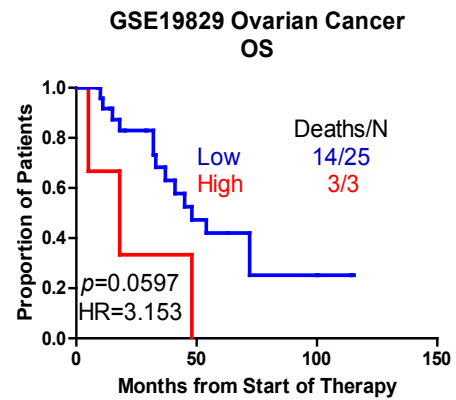
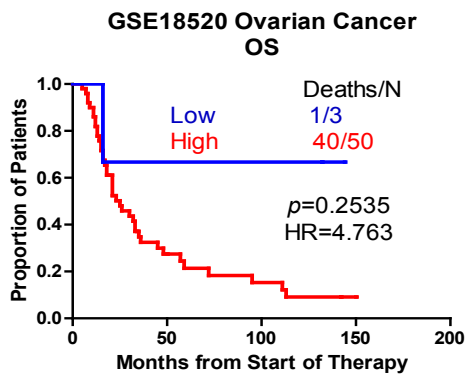
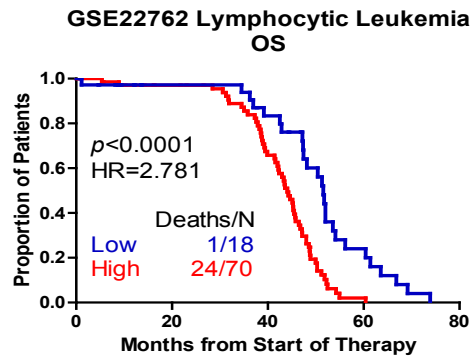
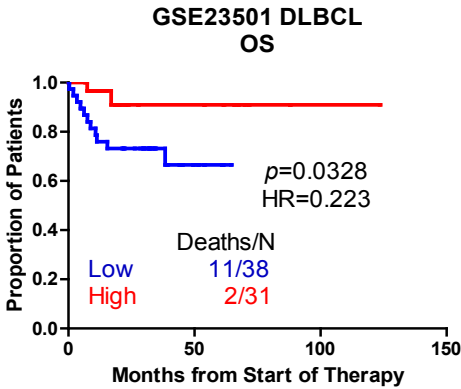
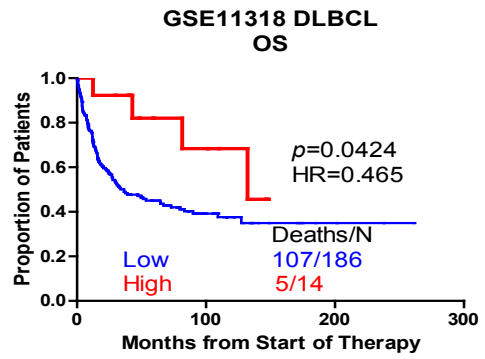
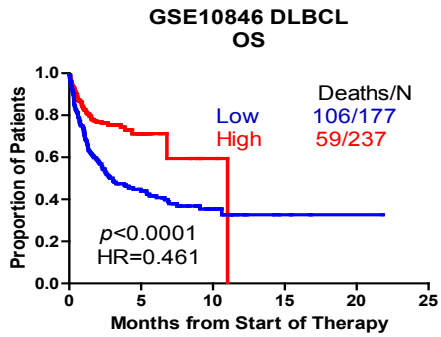
**Supplemental Fig. S1. Kaplan-Meier curves of MALAT-1 expression and OS/RFS in different cancers.**

(A) The relationship between MALAT-1 and OS is shown; (B) The relationship between MALAT-1 and RFS is shown. According to the calculated HR and a 95%CI in different cancers, lncRNA was set at a  $\geq 1.5$ -fold difference. The false discovery ratio (FDR) was  $< 0.05$ .

**Supplemental Fig. S2. Funnel plot analysis of potential publication bias for OS/RFS.**

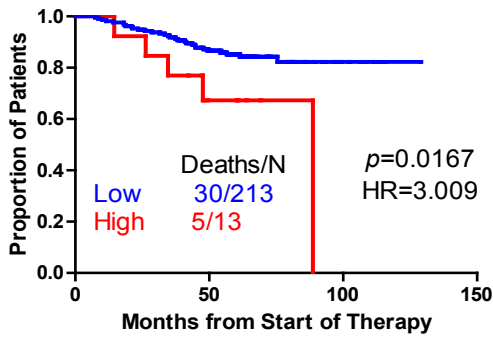
(A) There were no significant publication biases for OS (Egg's test:  $P > |t| = 0.064 > 0.05$ , Begg's test:  $Pr > |z| = 0.554$ ); (B) There were no significant publication biases for RFS (Begg's test:  $Pr > |z| = 0.260$ , Egg's test:  $P > |t| = 0.656 > 0.05$ ).

# Supplemental Fig. S1. A

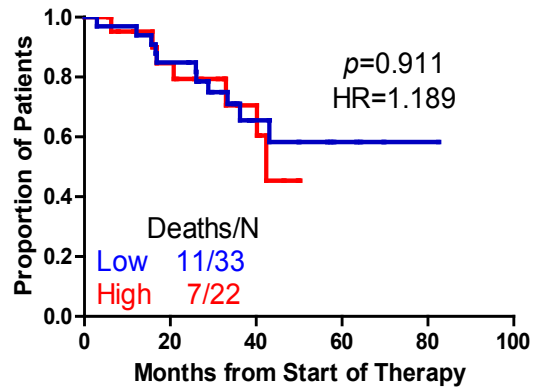


# Supplemental Fig. S1. A

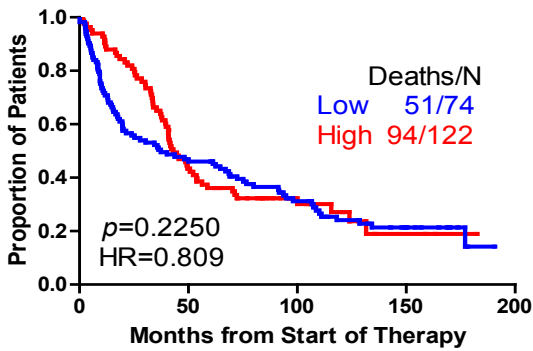
**GSE31210 Lung Cancer OS**



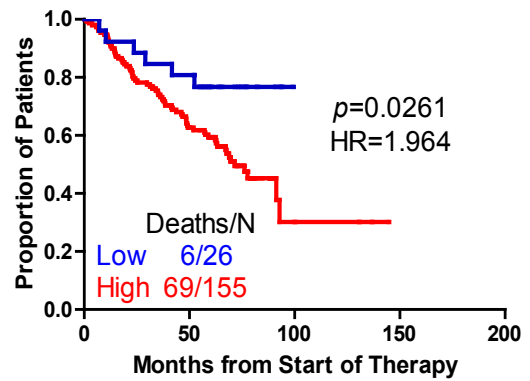
**GSE29013 Lung Cancer OS**



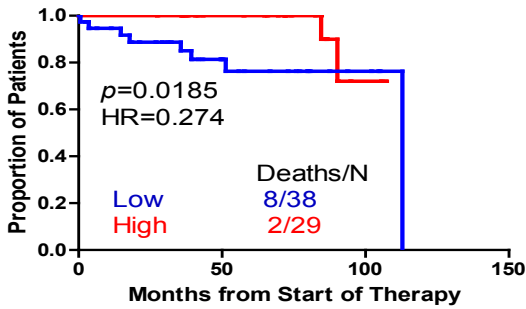
**GSE37745 Lung Cancer OS**



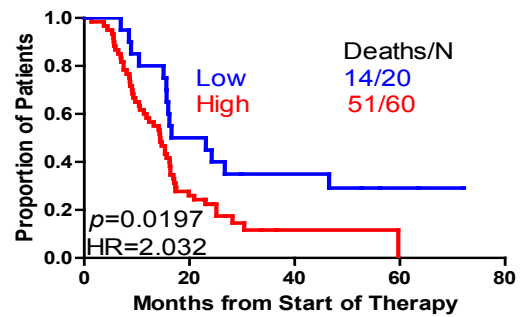
**GSE50081 Lung Cancer OS**



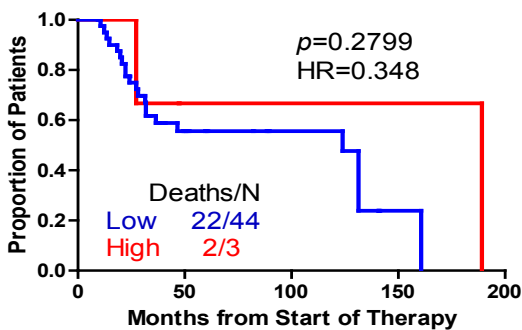
**GSE16581 Meningiomas OS**



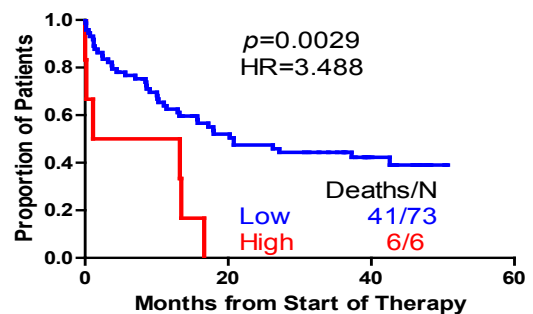
**GSE7696 Glioblastoma OS**



**GSE19234 Melanoma OS**

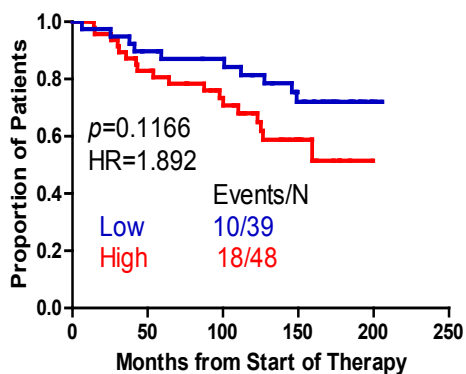


**GSE12417 CN-AML OS**

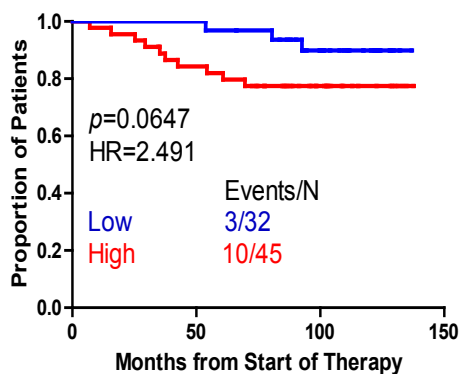


# Supplemental Fig. S1. B

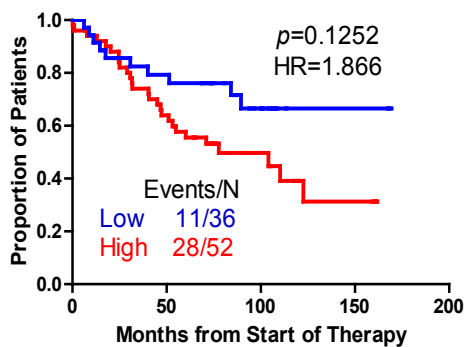
### GSE6532 Breast Cancer RFS



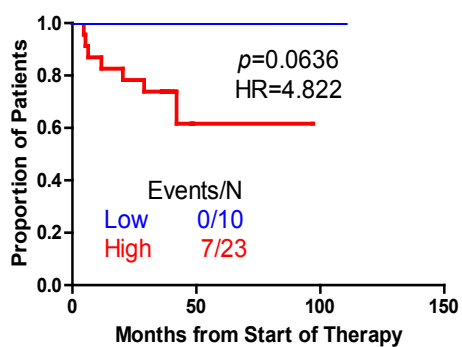
### GSE9195 Breast Cancer RFS



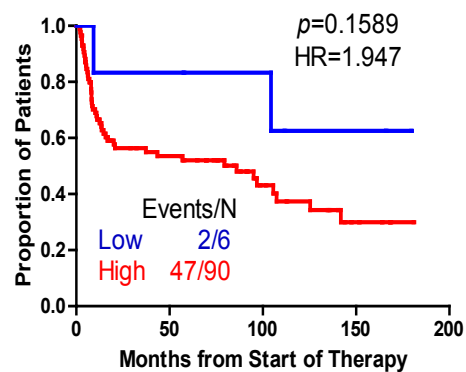
### GSE20711 Breast Cancer RFS



### GSE 31595 Colon Cancer RFS

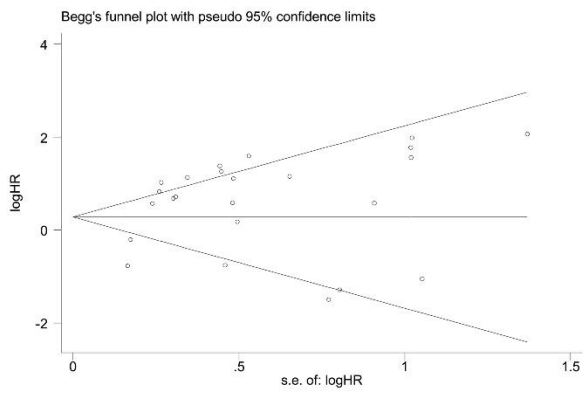


### GSE37745 Lung Cancer RFS



**Fig. S2**

**A**



**B**

