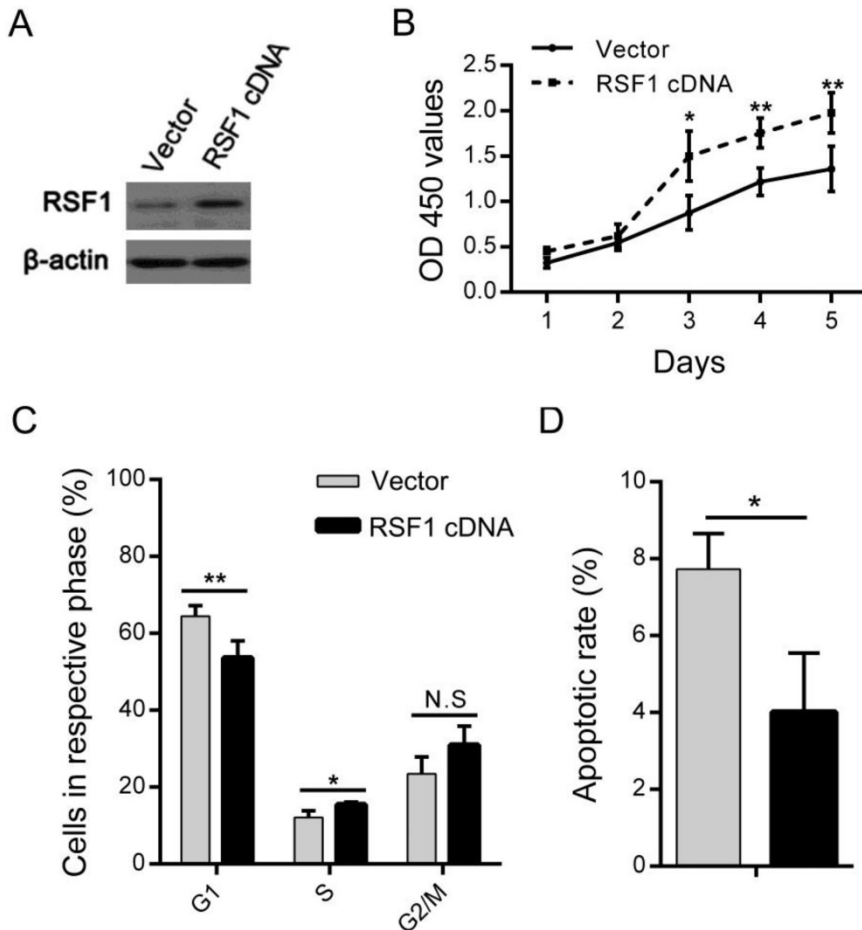


Supplementary Fig.1 RSF1 expression in NPC tissues. (A) Representative images of RSF1 protein in NPC tissues and noncancerous nasopharyngeal epithelial tissues. T stands for NPC tissues, and N means for noncancerous nasopharyngeal tissues. (B) Correlations between mRNA and protein expression of RSF1 were analyzed by linear regression analysis. Each plot represents for an individual NPC sample.



Supplementary Fig.2 RSF1 regulates the proliferation of NPC cells. (A) Lentivirus mediated RSF1 cDNA and vector were used to transfect NPC CNE-2 cells. 72 hours after transfection, RSF1 overexpression was examined by western blotting. (B) The effects of RSF1 overexpression on the proliferation of CNE-2 cells were investigated at day 1 to 5 via CCK8 assays. (C and D) Alterations of cell cycle and apoptosis in CNE-2 cells were examined by flow cytometry 72 hours after RSF1 overexpression. * $P < 0.05$, ** $P < 0.01$.