

Table S1. Composition of Jinfukang oral liquid.

| Herbal drug | Part used | Herbal drug | Part used |
|----------------------------------|-------------|----------------------------------|-------------|
| <i>Astragalus membranaceus</i> | Root | <i>Epimedium sagittatum</i> | Leaf |
| <i>Glehnia littoralis</i> | Root | <i>Gynostemma pentaphyllum</i> | Leaf |
| <i>Asparagus cochinchinensis</i> | Root | <i>Cornus officinalis</i> | Fruit |
| <i>Ligustrum lucidum</i> | Fruit | <i>Salvia chinensis</i> | Whole plant |
| <i>Selaginella doederleinii</i> | Whole plant | <i>Ophiopogon japonicus</i> | Root |
| <i>Paris polyphylla</i> | Root | <i>Trigonella foenum-graecum</i> | Seed |

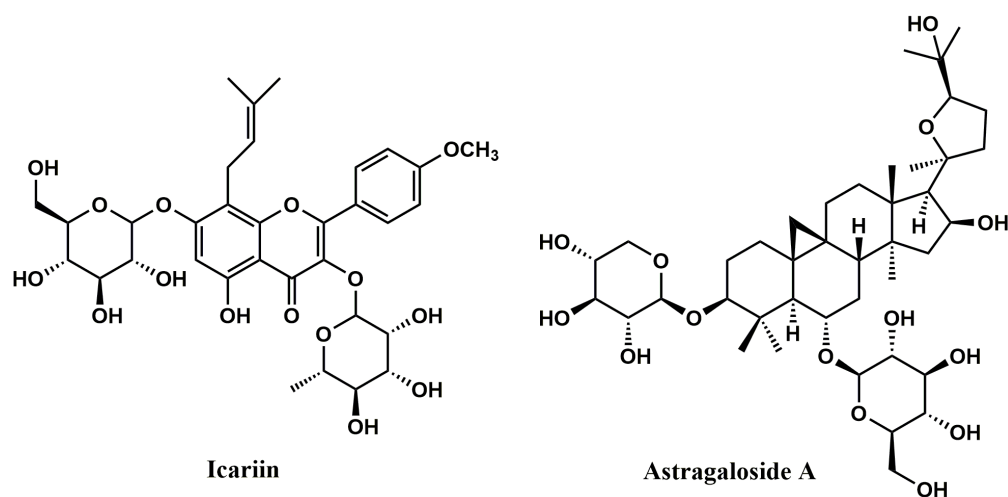


Figure S1. Structures of main chemical components of Jinfukang.