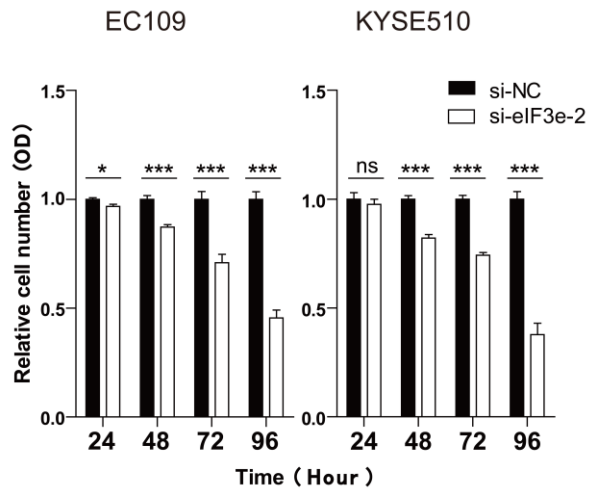


Fig. S1: eIF3e promotes the proliferative and migrative ability of ESCC. (A), the proliferative ability was assessed with CCK-8 assay at 24, 48, 72, and 96 hours after transfection. (B), the migrative ability was assessed with Transwell assay. (ns: no significance, * $p < 0.05$, ** $p < 0.01$, *** $p < 0.001$).

Fig. S2: (A), Western blot was performed to analyze the expressional level of related protein after knockdown of eIF3e. β -actin was used as an internal reference.

Fig. S1

A



B

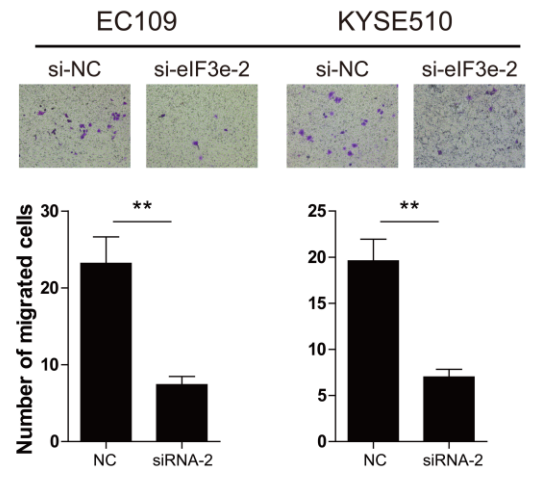


Fig. S2

