

Figure S1. Kaplan-Meier overall survival curves for 94 advanced PDAC patients with different serum LDH levels (A, B, C for normal serum LDH level, and D, E, F for high serum LDH level) stratified by (A)(D) pretreatment serum CA19-9 level, (B)(E) pretreatment serum CRP level, (C)(F) pretreatment serum ALB level.

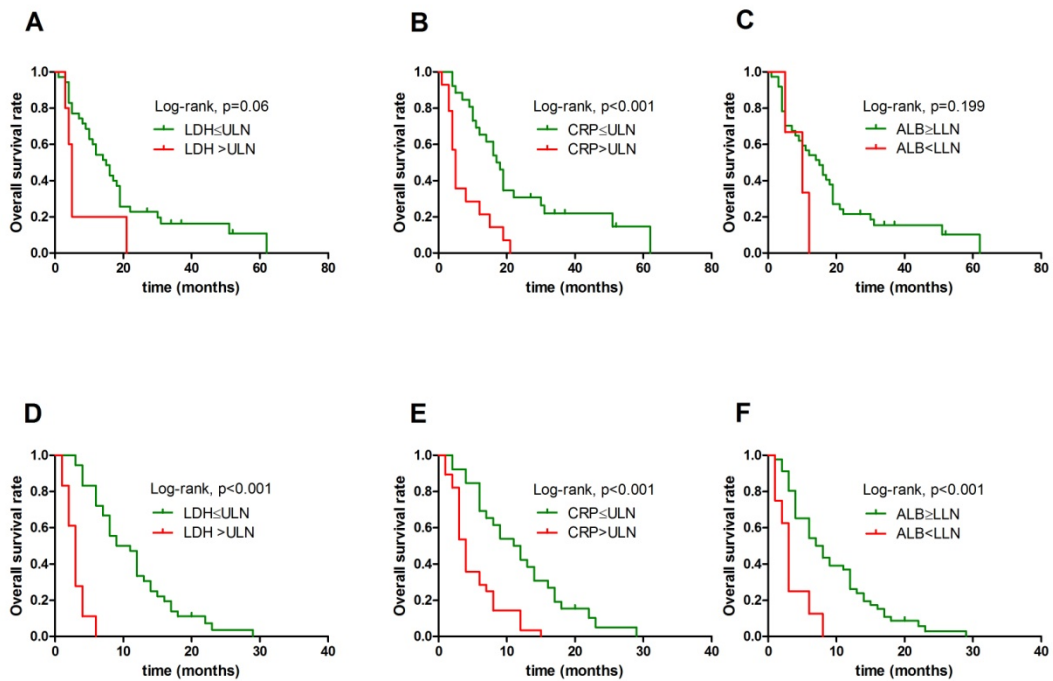


Figure S2. Kaplan-Meier overall survival curves for 94 advanced PDAC patients with different serum CA19-9 levels (A, B, C for normal serum CA19-9 level, and D, E, F for high serum CA19-9 level) stratified by (A)(D) pretreatment serum LDH level, (B)(E) pretreatment serum CRP level, (C)(F) pretreatment serum ALB level.

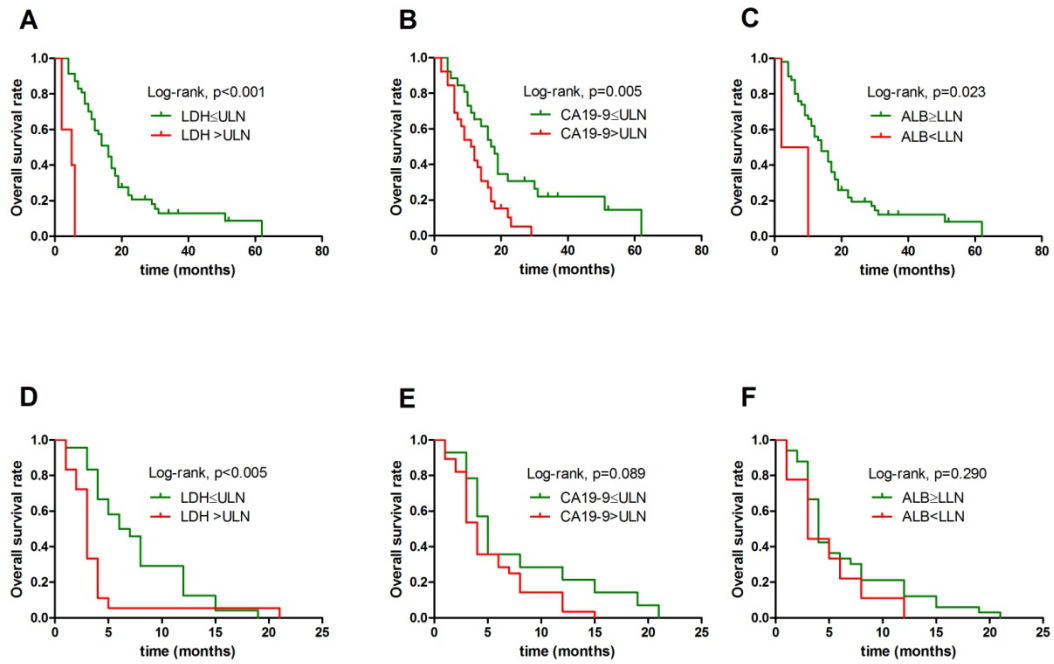


Figure S3. Kaplan-Meier overall survival curves for 94 advanced PDAC patients with different serum CRP levels (A, B, C for normal serum CRP level, and D, E, F for high serum CRP level) stratified by (A)(D) pretreatment serum LDH level, (B)(E) pretreatment serum CA19-9 level, (C)(F) pretreatment serum ALB level.

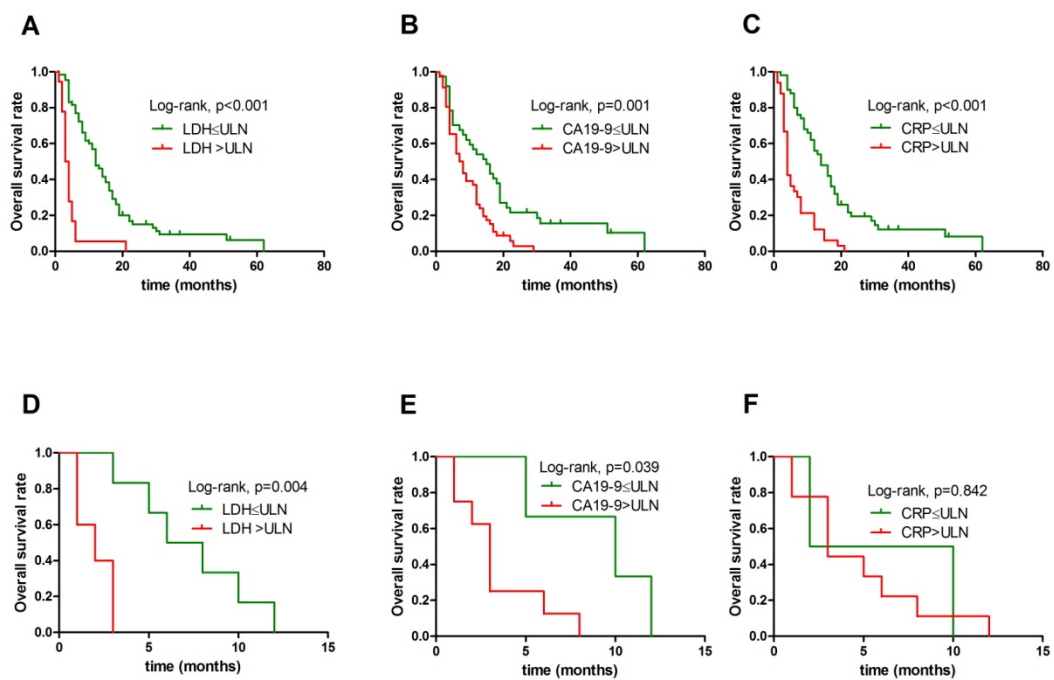


Figure S4. Kaplan-Meier overall survival curves for 94 advanced PDAC patients with different serum ALB levels (A, B, C for normal serum ALB level, and D, E, F for low serum ALB level) stratified by (A)(D) pretreatment serum LDH level, (B)(E) pretreatment serum CA19-9 level, (C)(F) pretreatment serum CRP level.