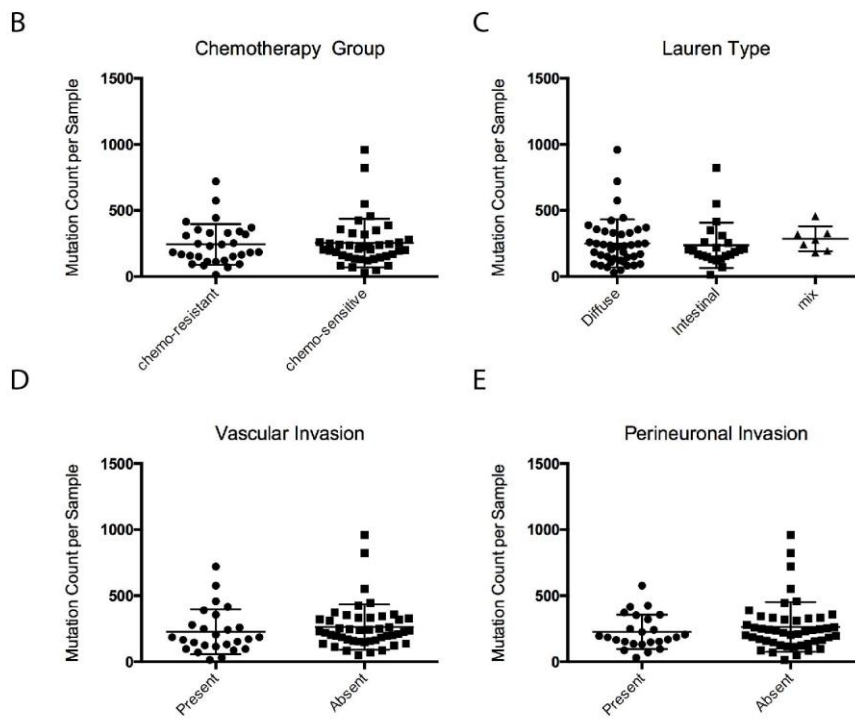
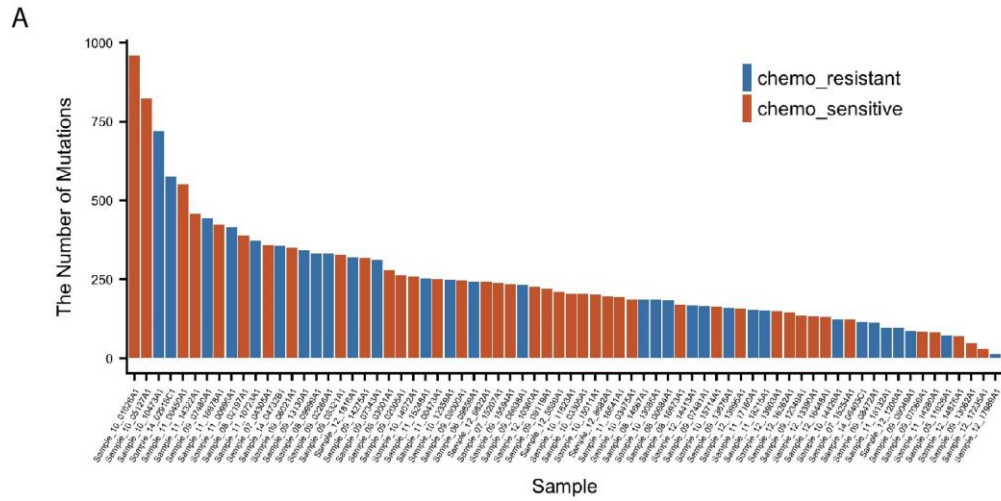


Supplementary Figure 1 Comparison of clinical features based on mutation count in each sample. (a) Numbers of somatic mutations in each sample. (b) Comparisons between chemo-resistant subgroup and chemo-sensitive subgroup. (c) Comparisons according to the Lauren classification. (d) Comparisons according to the vascular invasion. (e) Comparisons according to the perineuronal invasion.

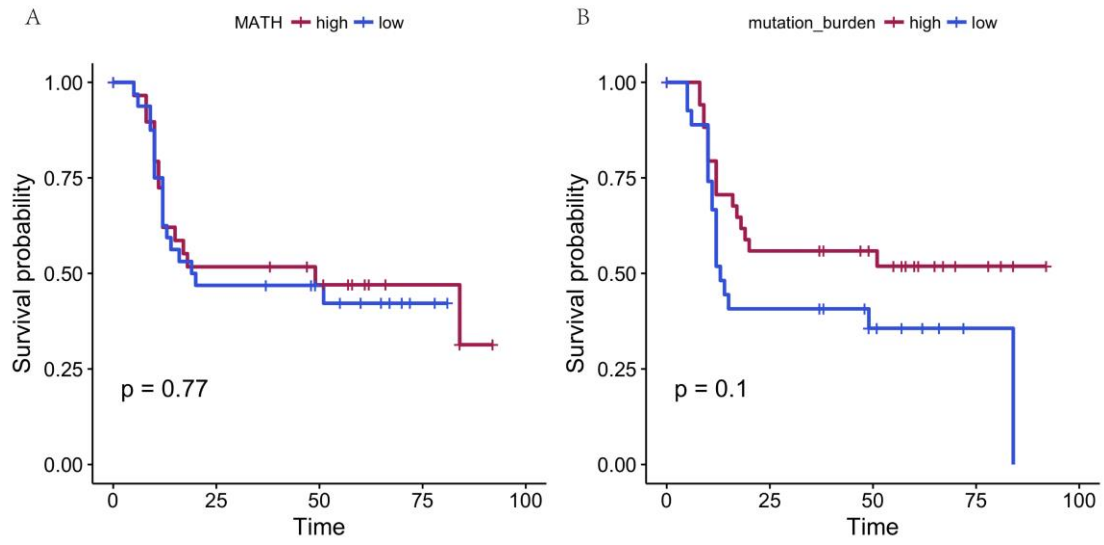
Supplementary Figure 2 Kaplan–Meier curves are shown for overall survival in the cohorts with gastric cancer. (a) Overall survival in patients with gastric cancer with a high or low clonality. (b) Overall survival in patients with gastric cancer with a high or low mutation burden.

Supplementary Figure 3 Oncoprint of mutations for the common cancer related genes in gastric cancer (GC) by deep sequencing.

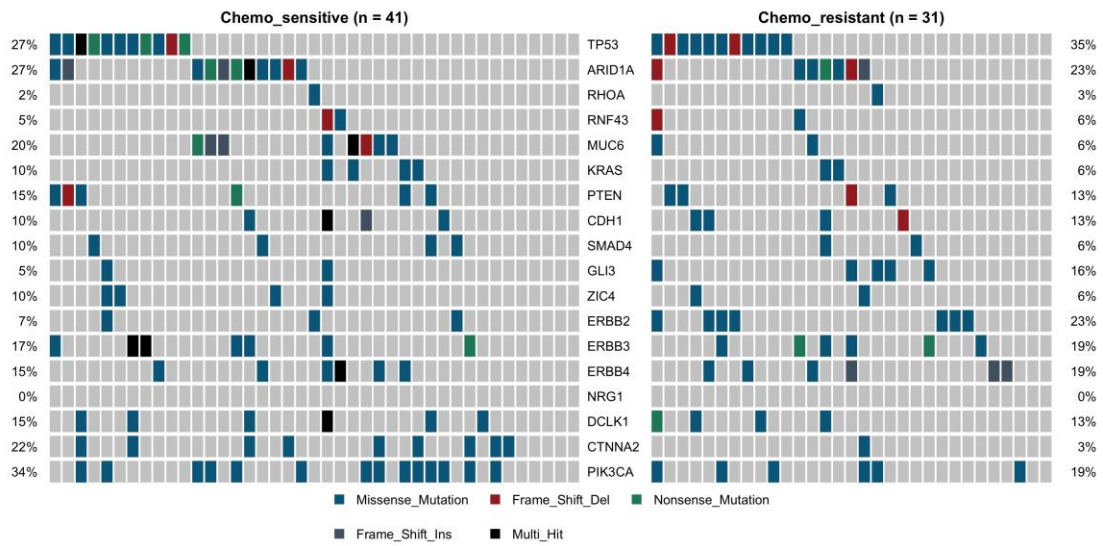
Supplementary figure 4 The forestplot shows 31 genes which are highly mutated in chemo-resistant subgroup compared to chemo-sensitive subgroup.



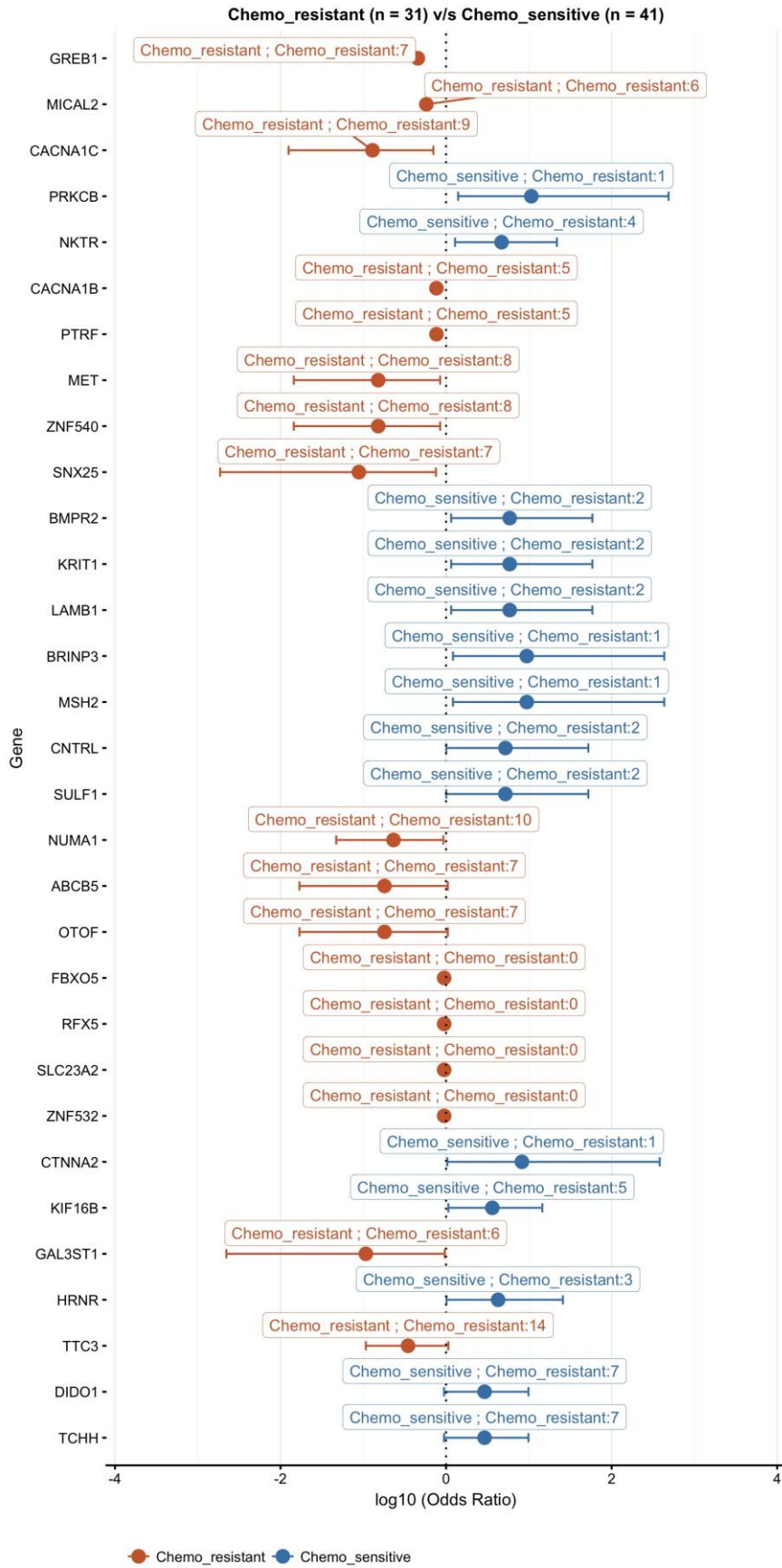
Supplementary Figure 1



Supplementary Figure 2



Supplementary Figure 3



Supplementary figure 4