

Table S1: List of primers used for gene expression analysis

Gene	Sequences	
Homo sapiens	Forward	Reverse
CDK1	CCCTTTAGCGCGGATCTACC	TGGCTACCACTTGACCTGTAG
Cyclin B1	CGGCCTCTACCTTTGCACTT	TTCTTGACAGTCCATTCACCA
Collagen IV	GCCCATGGTCAGGACTTG	AAGGGCATGGTGCTGAACT
Fibronectin	CGAGCTTCCCCAACTGGTAACCC	AGCTTCTTGTCTACATTCCGGCGG
N-cadherin	GGACAGTTCCTGAGGGATCA	GGATTGCCTTCCATGTCTGT
Snail1	TCTAGGCCCTGGCTGCTACAA	ACATCTGAGTGGGTCTGGAGGTG
α -SMA	CCGACCGAATGCAGAAGGA	ACAGAGTATTTGCGCTCCGAA
ZEB1	GCCAACAGACCAGACAGTGT	GCCCTTCCTTTCTGTGTCA
Notch1	GATGACCTGGGCAAGTCCG	TGCGCTCCTGTGCGATGT
Notch2	GGGACCCTGTCATACCCTCT	GAGCCATGCTTACGCTTTTCG
Notch3	TGTGAACTCCTCTCCCCCTG	CGTTCAGGCATGGGTCTTG
MAML1	GCCACGCATCTTCATGATACAG	CCATTGGAAGAGATGGCAACTC
RBPJ	CAGTGCTGGATCTGGGAATCTCT	CTCACCAAATTTCCCAGGCGATG
Hes1	ACACGACACCGGATAAACCAA	AATGCCGCGAGCTATCTTTCT
GAPDH	CCCGCTTCGCTCTCTGCTCC	ACCAGGCGCCAATACGACC
Oryctolagus cuniculus	Forward	Reverse
Collagen I	CATTAGGGGACACAACGGTC	GGACCAACACTGCCATCACT
Fibronectin	CTCACCCGAGGCGCCACCTA	TCGCTC CCA CTC CTC TCC AACG
Snail2	AGAACTCACACTGGGGAGAAGC	TTTGTCATTTGGCGTCGGAG
GAPDH	TCGGAGTGAACGGATTTGGC	TTCCCGTTCTCAGCCTTGAC
Rattus norvegicus	Forward	Reverse
Fibronectin	AAGACAGATGAGCTTCCCCAAC	TGGGTTGTTGGTGGGATGTG
Snail1	GACGCGTGTGTGGAGTTCA	AGATGAGGGTGGGCAGCGAA
ZEB1	GGAAGGCAGAGAATGGGATGT	GGCCTCTTACCTGTATGCTCAT
ZO-1	GAGAAAGGTGAAACTCTGCTG	ACAGTGTGGCAAGCGTA
GAPDH	AGTGCCAGCCTCGTCTCATA	CTTGCCGTGGGTAGAGTCAT

Table S2: List of primary antibody used for Wb and Immunofluorescence

Primary Antibody	Company	Cat.	Lot.
p-ERK1/2	Cell Signaling Technology, Danvers, MA	#9101S	28
α-SMA	Cell Signaling Technology, Danvers, MA	#48938	1
p-AKT	Cell Signaling Technology, Danvers, MA	#4058S	30
Notch 1	Cell Signaling Technology, Danvers, MA	#2421S	16
Notch 2	Cell Signaling Technology, Danvers, MA	#5732S	2
GAPDH	Cell Signaling Technology, Danvers, MA	#517S	4
Smad2/3	Santa Cruz, Santa Cruz Biotechnology Inc, CA	sc-8332	G3115
p-Smad2/3	Santa Cruz, Santa Cruz Biotechnology Inc, CA	sc-11769-R	H1215
AKT	Santa Cruz, Santa Cruz Biotechnology Inc, CA	sc-1618	H1415
p-38	Santa Cruz, Santa Cruz Biotechnology Inc, CA	sc-7149	H0213
Tubulin	Bioworld Technology, Inc, US	AP0064	AA0217J1909
E-cadherin	Beijing Biosynthesis Biotechnology Co,LTD	bs-10009R	AG07255180
N-cadherin	Beijing Biosynthesis Biotechnology Co,LTD	bs1172R	AG08057588
p-P38	Beijing Biosynthesis Biotechnology Co,LTD	sc101759	H0213
ERK	Beijing Biosynthesis Biotechnology Co,LTD	bsm-3337M	AGD7125402
CDC25	Boster, CN	BM2728	1F12
Cyclin B1	Boster, CN	BM0766	1B10
CDK1	Boster, CN	BM1028	8C5A6
Fibronectin	Boster, CN	BA1771	Y-07D10A
ZO-1	Boster, CN	PB0231	ZP1007BP07
PI3K	Boster, CN	BM5187	BST17155187

Figure S1 : STR profiling of our lens epithelial cell line used above.



Result of STR matching analysis by your data.

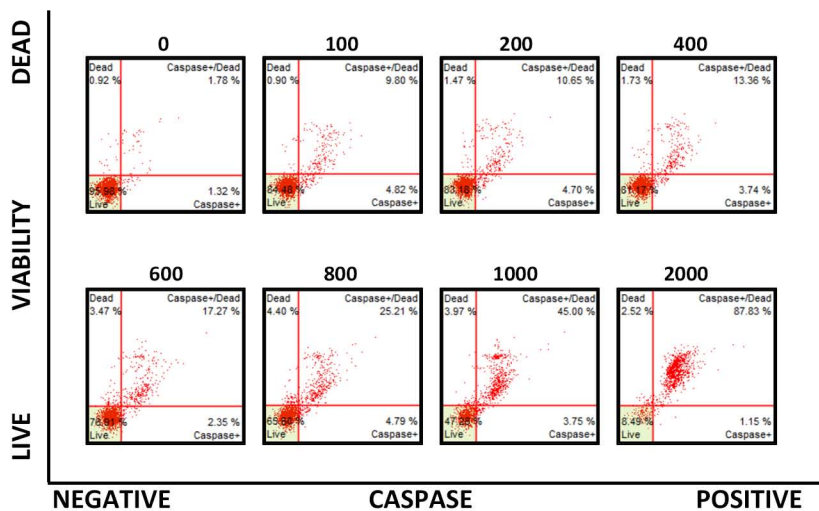
- DSMZ Profile Database -

A graphical presentation is shown at the bottom of this page.

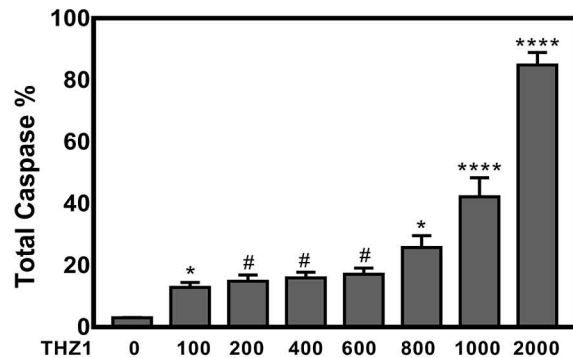
EV	Cell No.	Cell name	Locus names									Figures
			D5S818	D13S317	D7S820	D16S539	VWA	TH01	AM	TPOX	CSF1PO	
		<i>Query (Your Cell)</i>	1,12,13	10	10,11,13	10	17,20	6,7	x,y	8	11,13,15	
0.92(36/39)	RCB1591	SRA 01/04	1,12,13	10,10	10,11,13	10,10	17,20	6,7	X,Y	8,8	11,13,15	-

Figure S2: THZ1 induced apoptosis and TGF β 2 induced EMT in LECs.

A



B



C

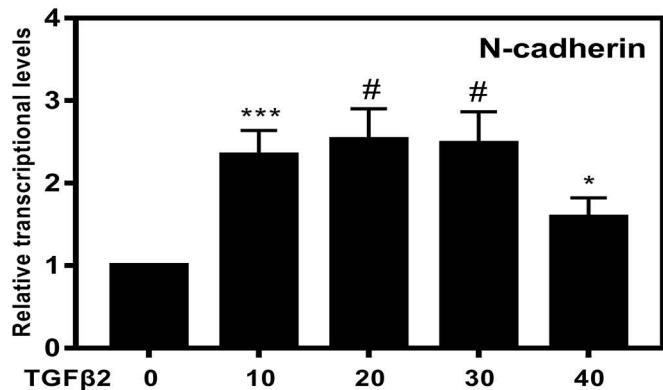
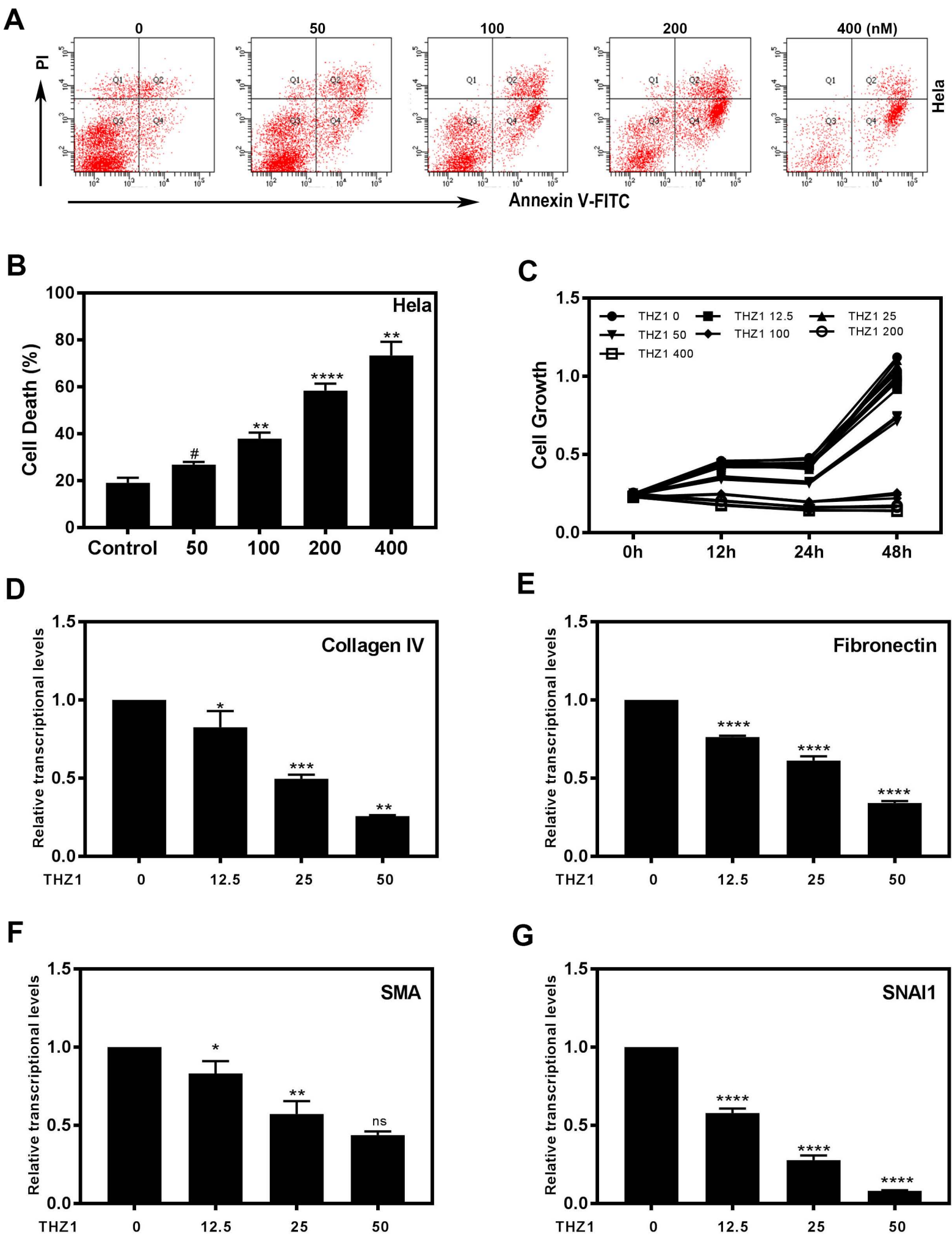


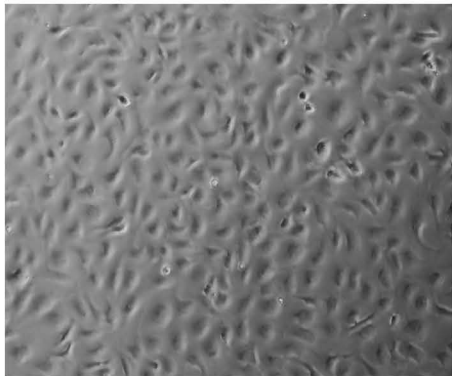
Figure S3: EMT inhibited by THZ1 in Hela 229.



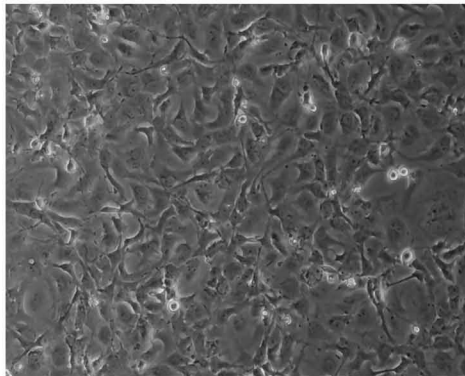
Supplementary Figure S4 : Change of cell morphology

A

Control



TGF β 2



TGF β 2 + THZ1

