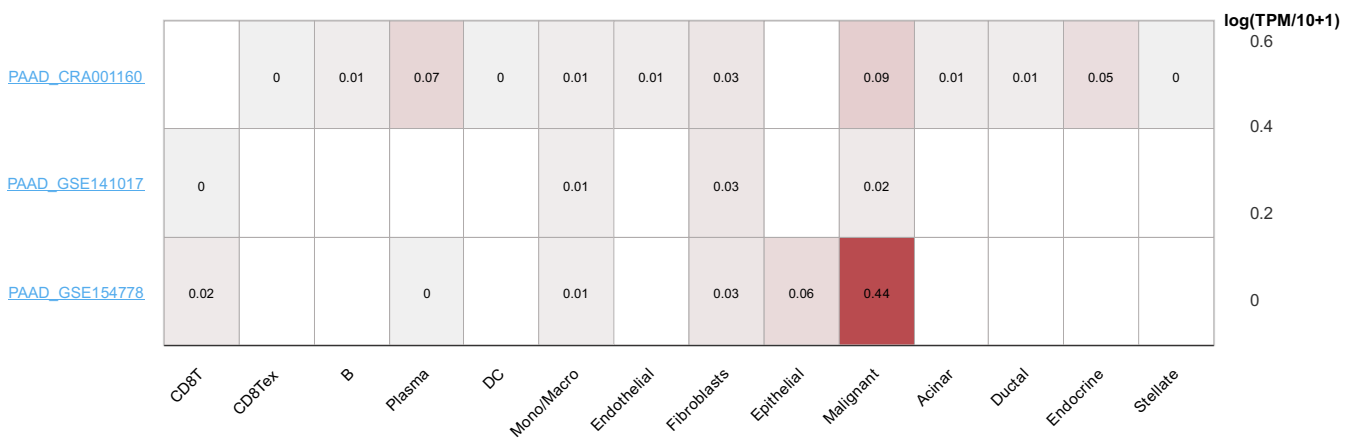




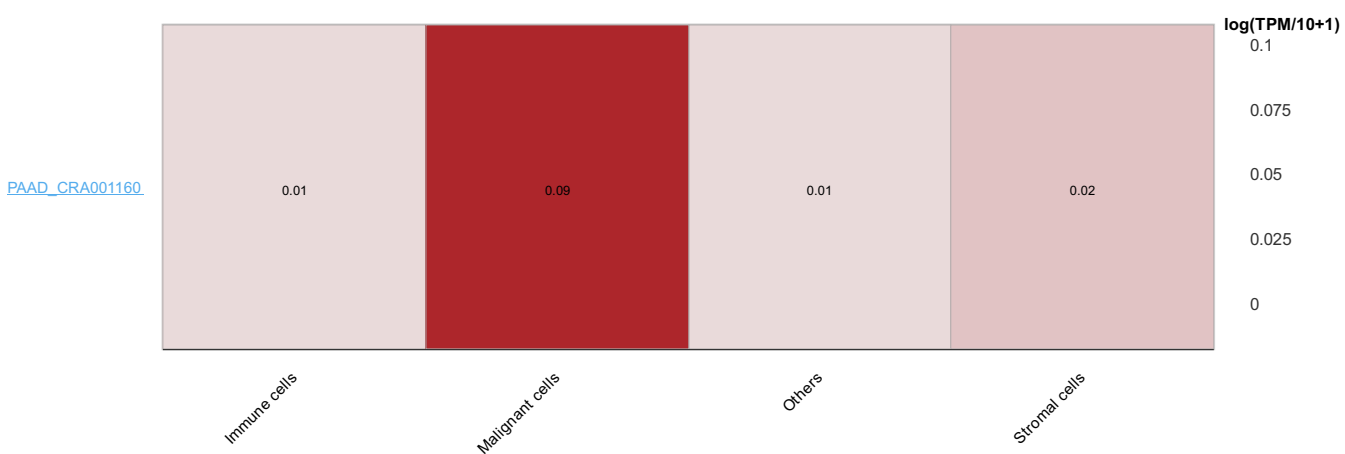
A

SOX2



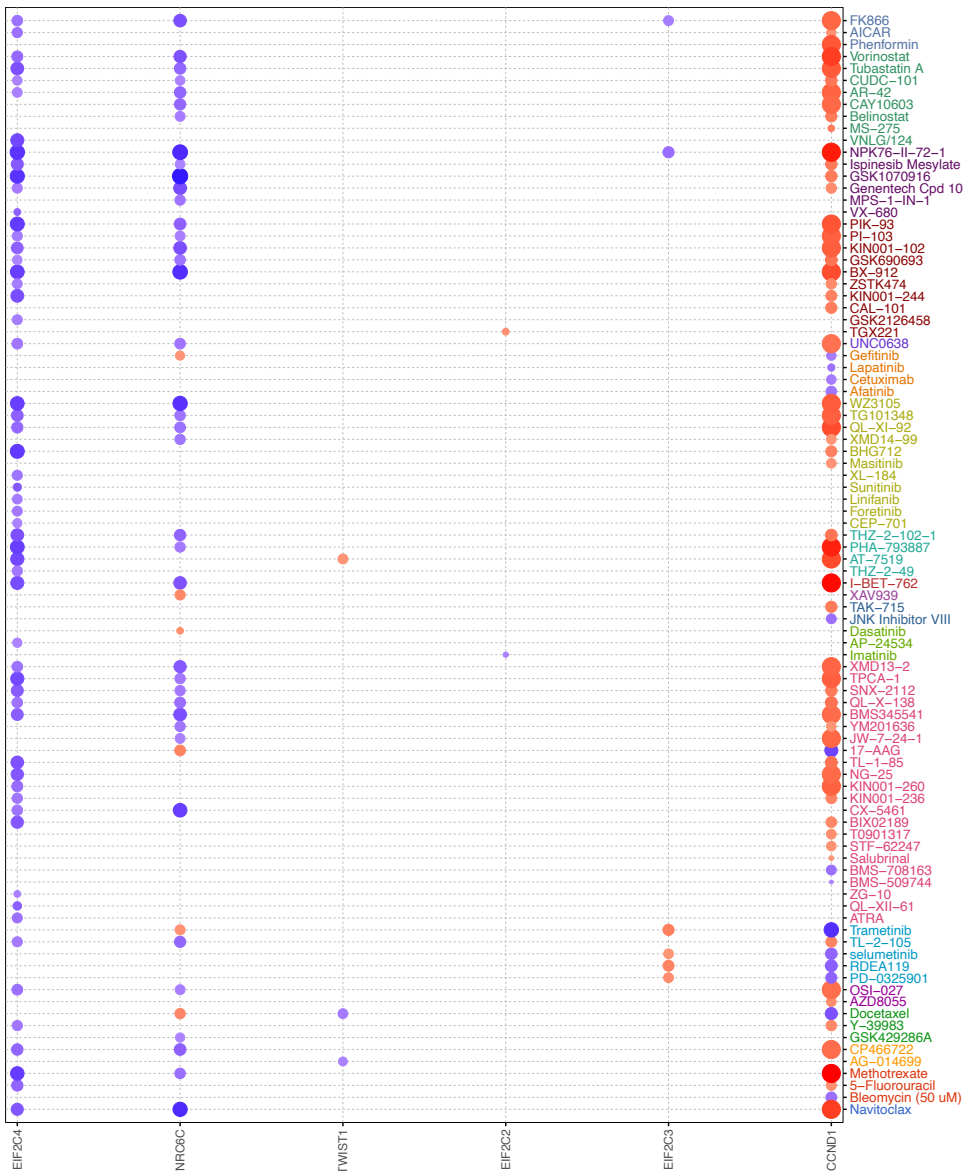
B

SOX2

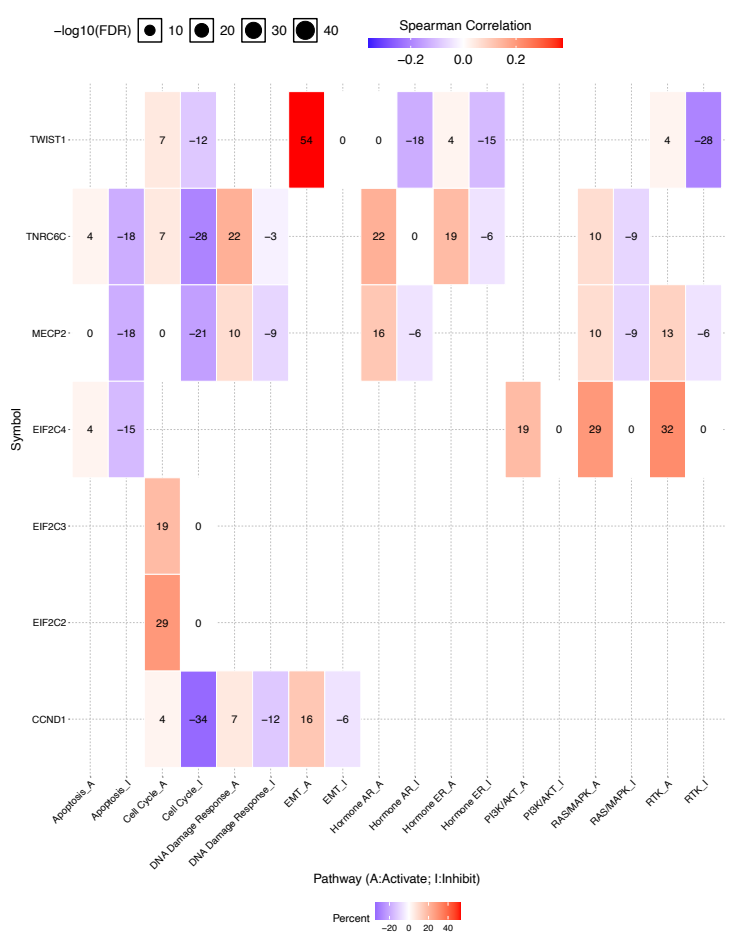


FigureS2: Analysis of immune infiltration of DC and Mast cells by SOX2 through single-cell sequencing in pancreatic (A).Mast cell (B).DC cell

A

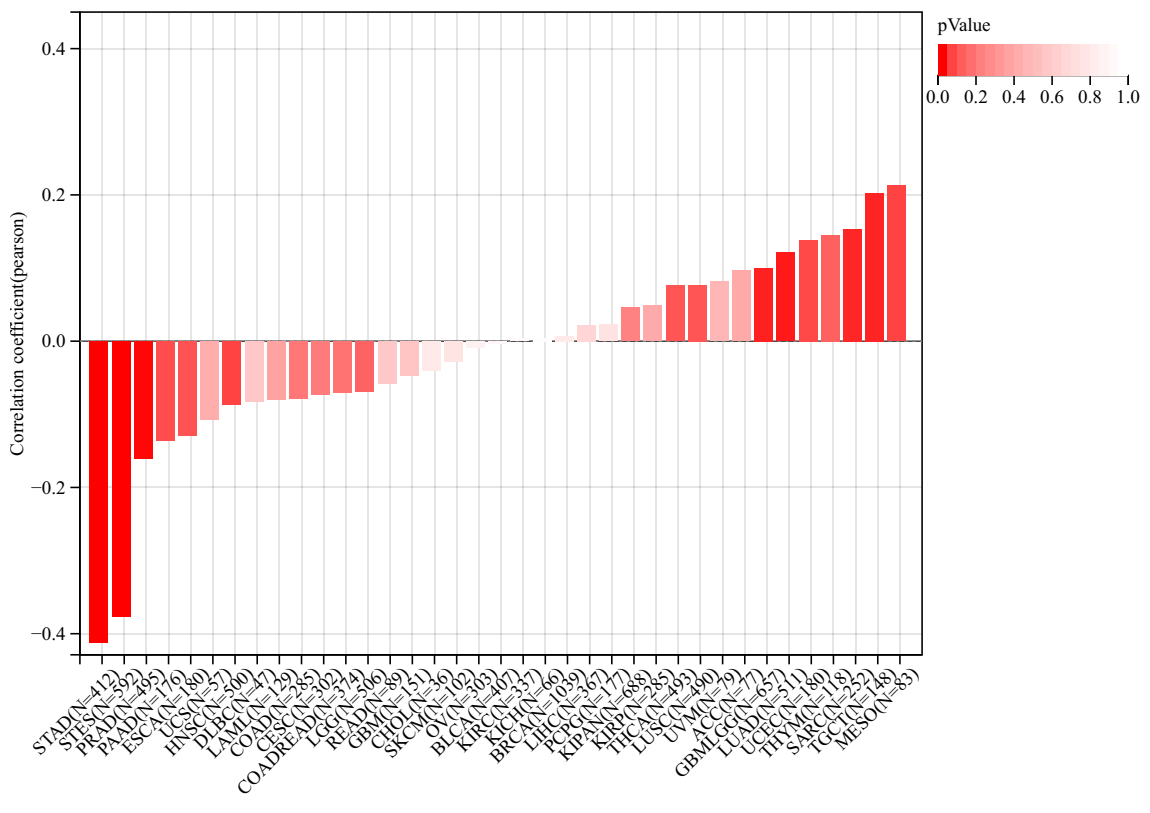


B

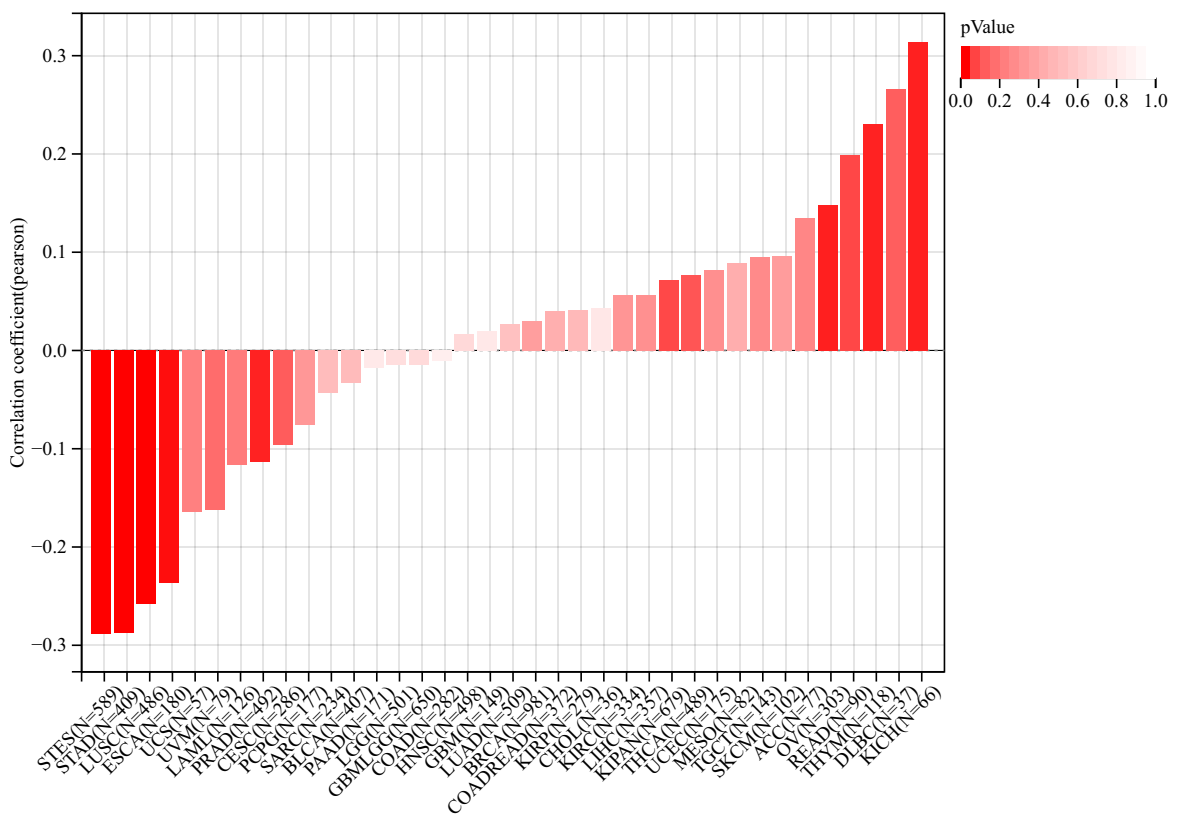


FigureS3: Drug sensitivity and pathway analysis of sox2 in pan-cancer (A) Drug sensitivity analysis of SOX2 in pan-cancer (B) Pathway analysis of sox2 in pan-cancer

A

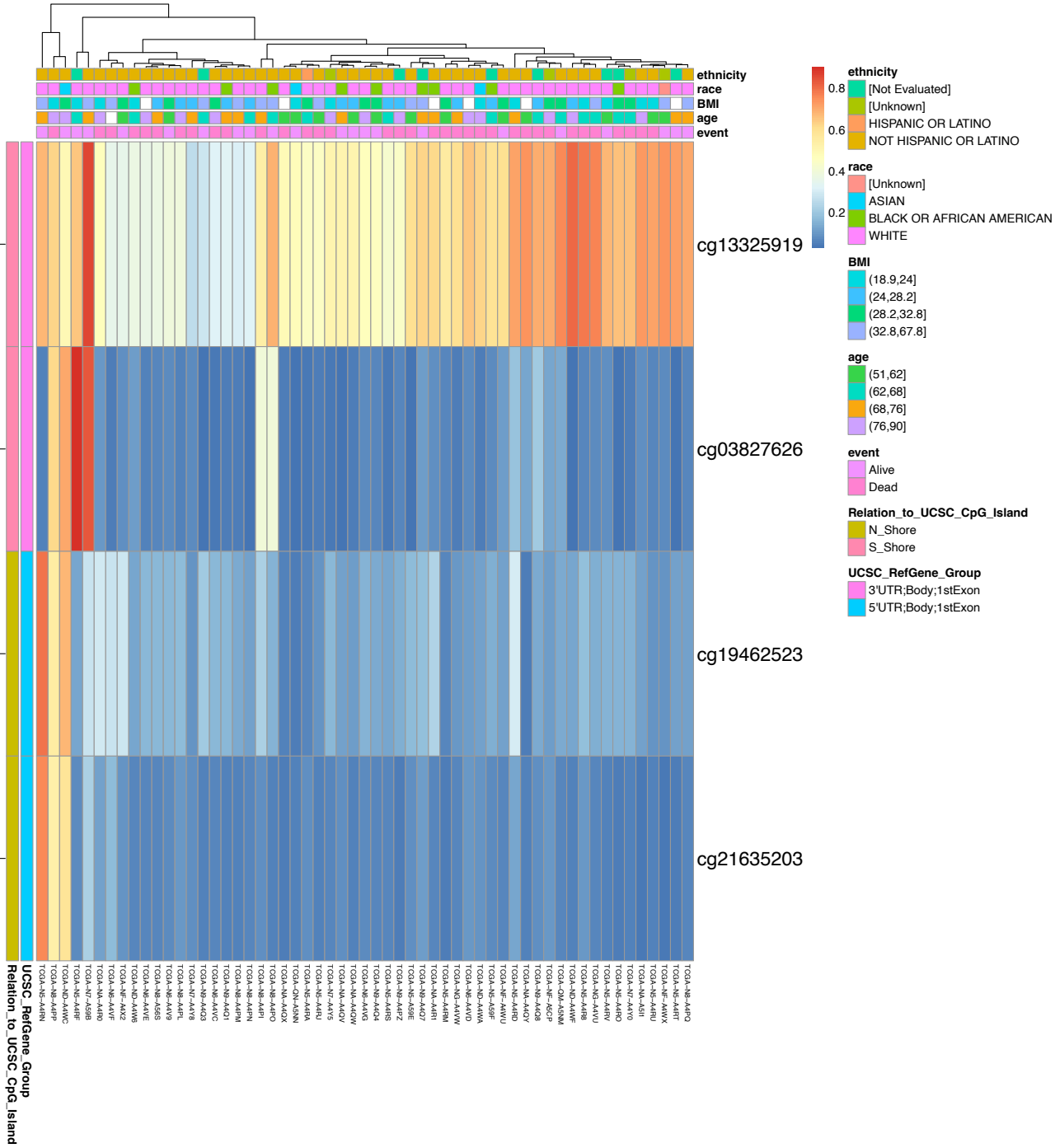


B



FigureS4:Microsatellite Instability(MSI) and tumor mutational burden(MATH) of SOX2 in pan-cancer analysis.(A)MSI (B)MATH

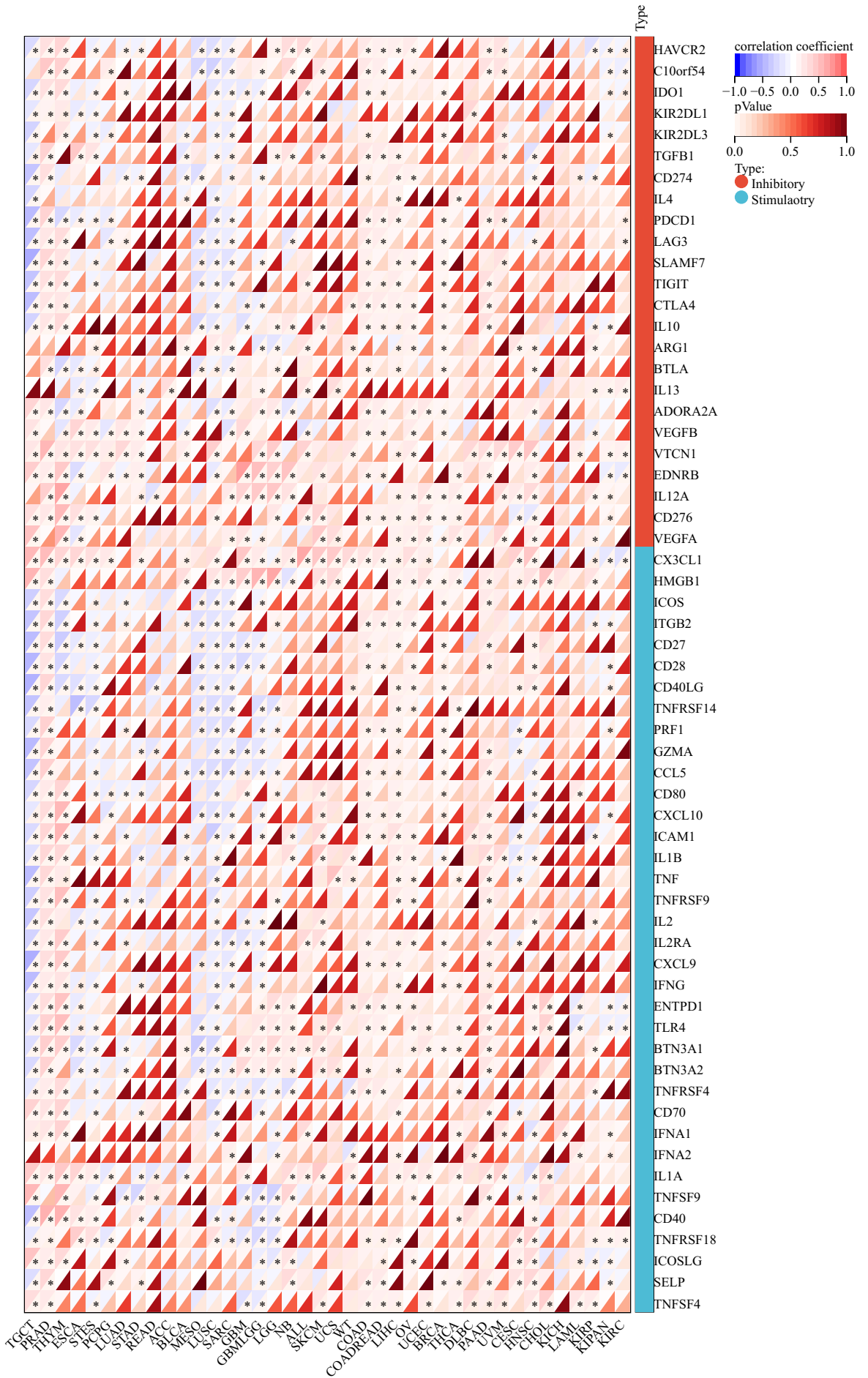
A



FigureS5:DNA methylation level of SOX2 and its effect on prognosis of patients with PAAD. (A) Correlation between SOX2 mRNA expression level and methylation level.



A



FigureS7:Immune checkpoint gene analysis (A):Immune checkpoint gene analysis of SOX2 in pan-cancer