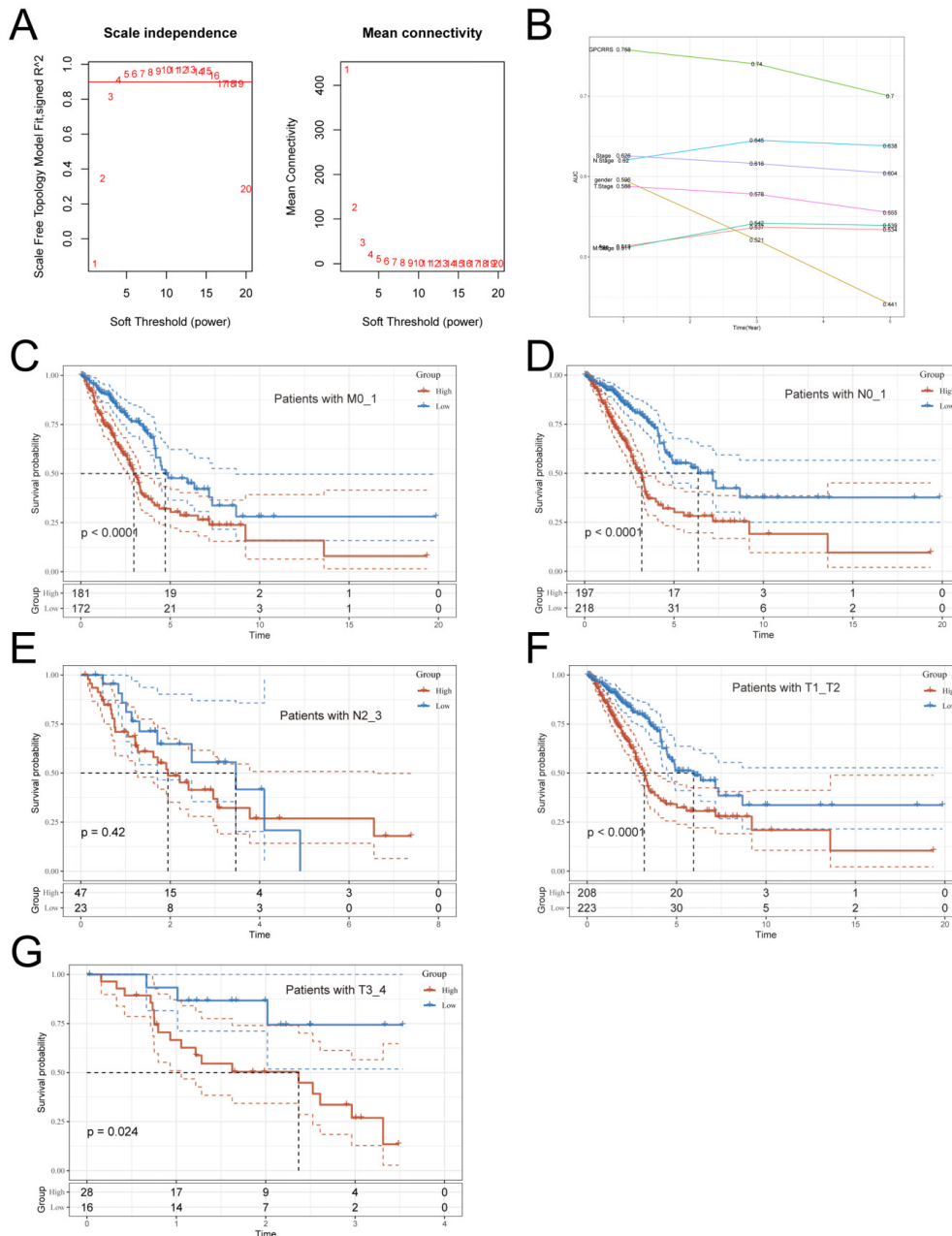


1 **Supplementary Figures:**



2

3

**Supplementary Figure.1**

4

**Identification of soft queue values and KM curves for clinical features of**

5

**GPCRRS.**

6

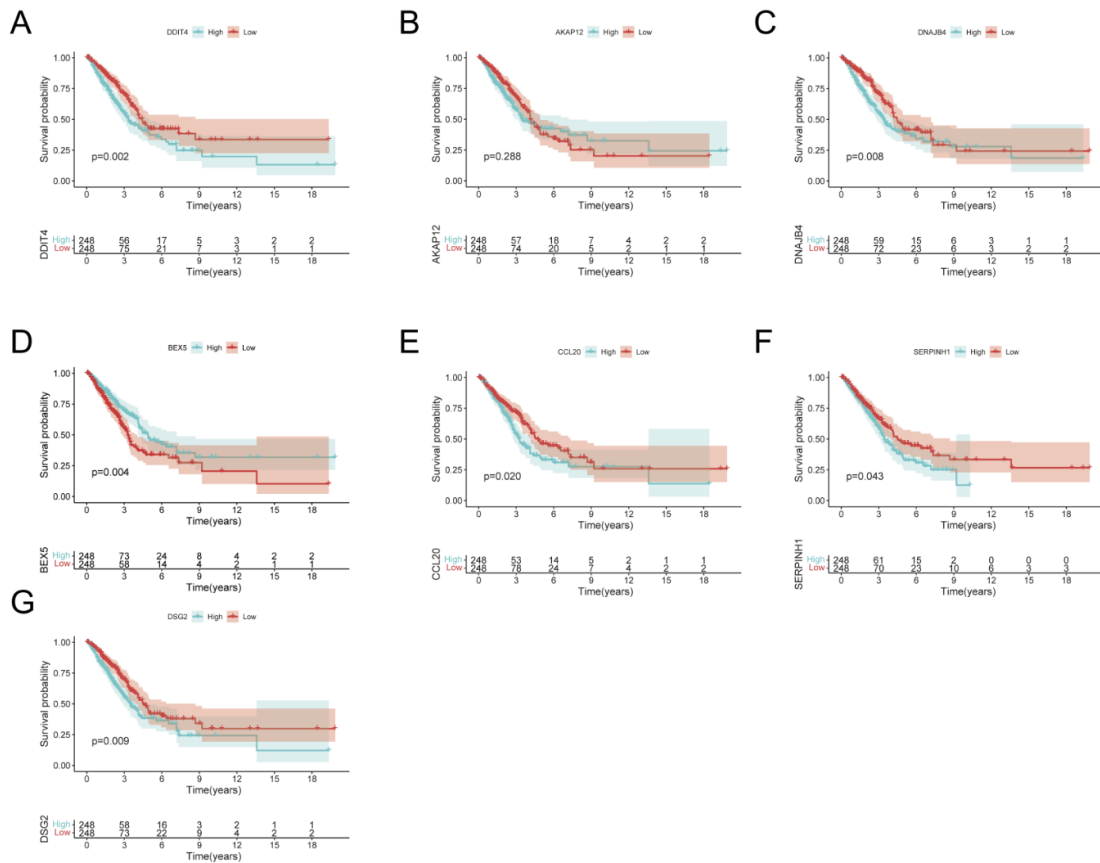
(A)WGCNA identifies soft queues; (B)Comparison of GPCRRS with other clinical features

7

in the TCGA training set; (C-G) KM curves demonstrating the stability of each clinical

8

feature of GPCRRS, including M-stage(C), N-stage (D,E) , and T-stage(G).



9

10

**Supplementary Figure.2**

11

**Prognosis of the GPCR genes.**

12

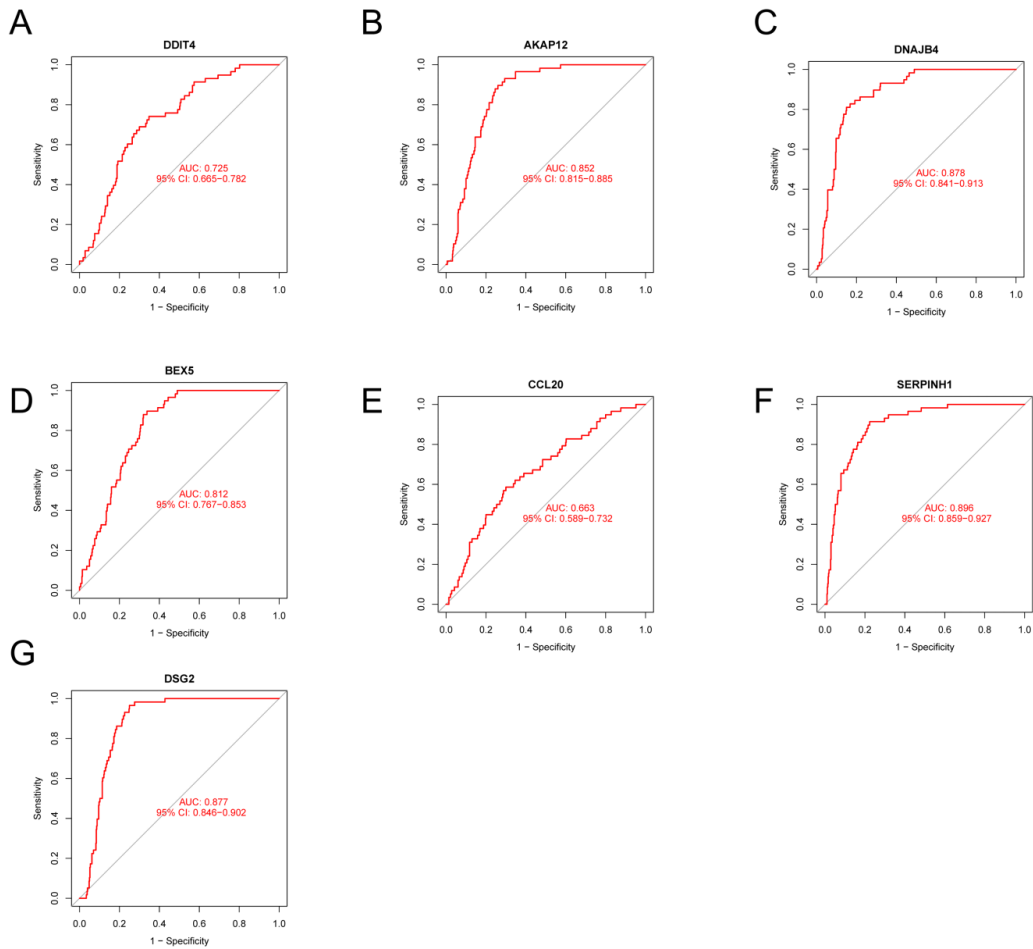
KM curves demonstrating the prognostic relationship of GPCR genes in high and low

13

expression groups including

14

DDIT4(A),AKAP12(B),DNAJB4(C),BEX5(D),CCL20(E),SERPINH1(F),DSG2(G).



15

16

**Supplementary Figure.3**

17

**ROC diagnostic curve;**

18

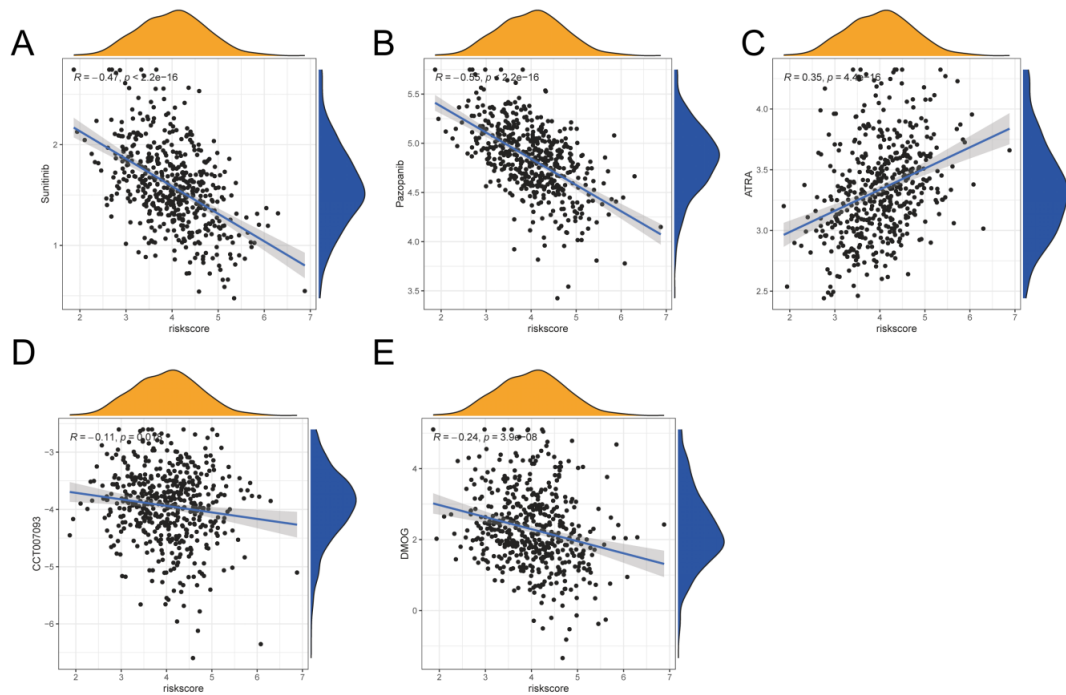
ROC diagnostic curve for the GPCRRS gene including

19

DDIT4(A),AKAP12(B),DNAJB4(C),BEX5(D),CCL20(E),SERPINH1(F),DSG2(G).

20

21



22

23

**Supplementary Figure.4**

24

**Relevance of drugs;**

25

Correlation between GPCRRS and drugs including Sunitinib(A), Pazopanib(B),

26

ATRA(C), CCT007093(D), DMOG(E).

27

28