

Figure S1. Expression of *SLC39A1*, *SLC39A4*, and *SLC39A8* in 33 types of cancers.

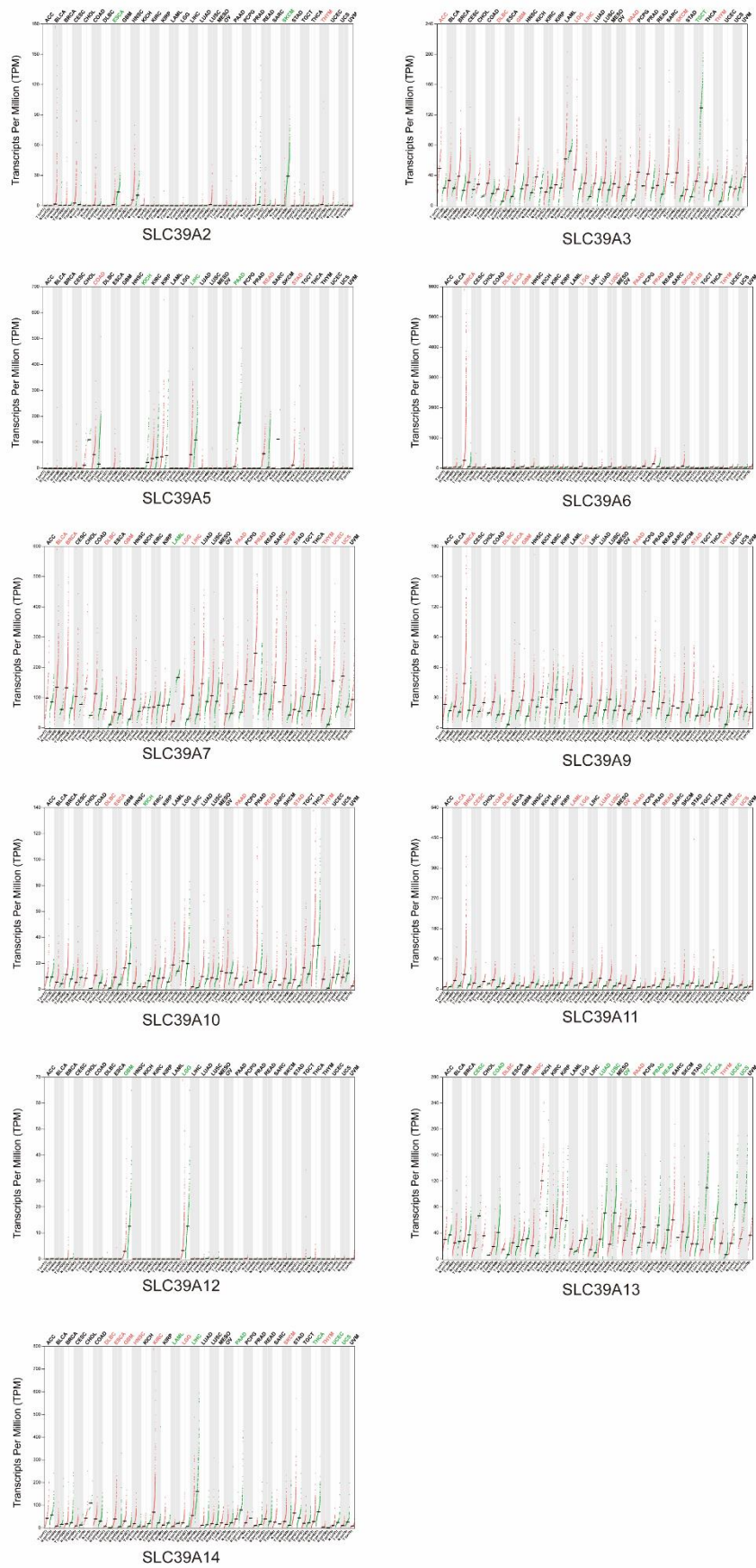


Figure S3. Expression of SLC39A families in 33 types of cancers.

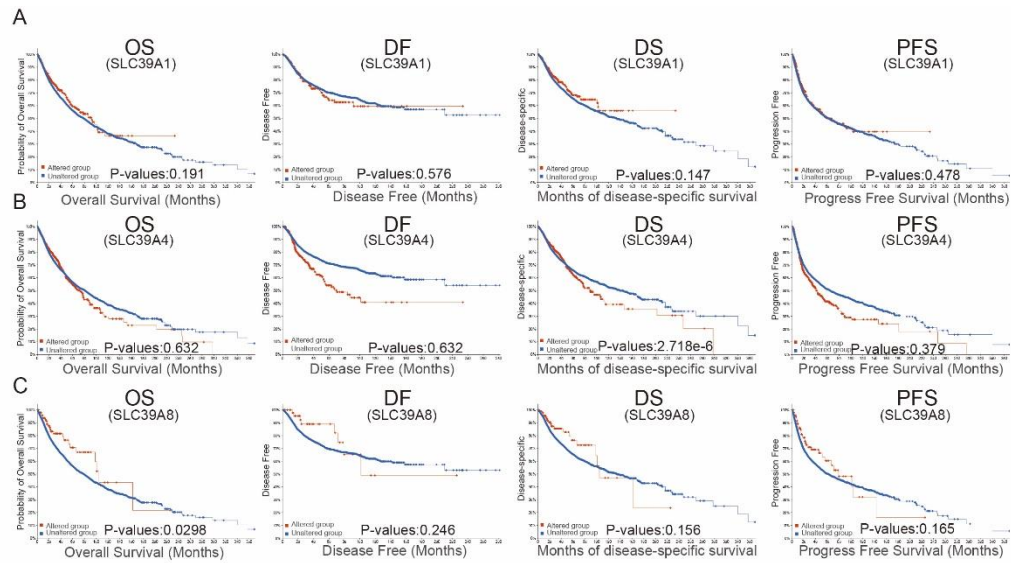


Figure S4. OS, DF, DS, PFS of cancer patients with or without *SLC39A1* mutation (A). OS, DF, DS, PFS of cancer patients with or without *SLC39A4* mutation (B). OS, DF, DS, PFS of cancer patients with or without *SLC39A8* mutation (C).

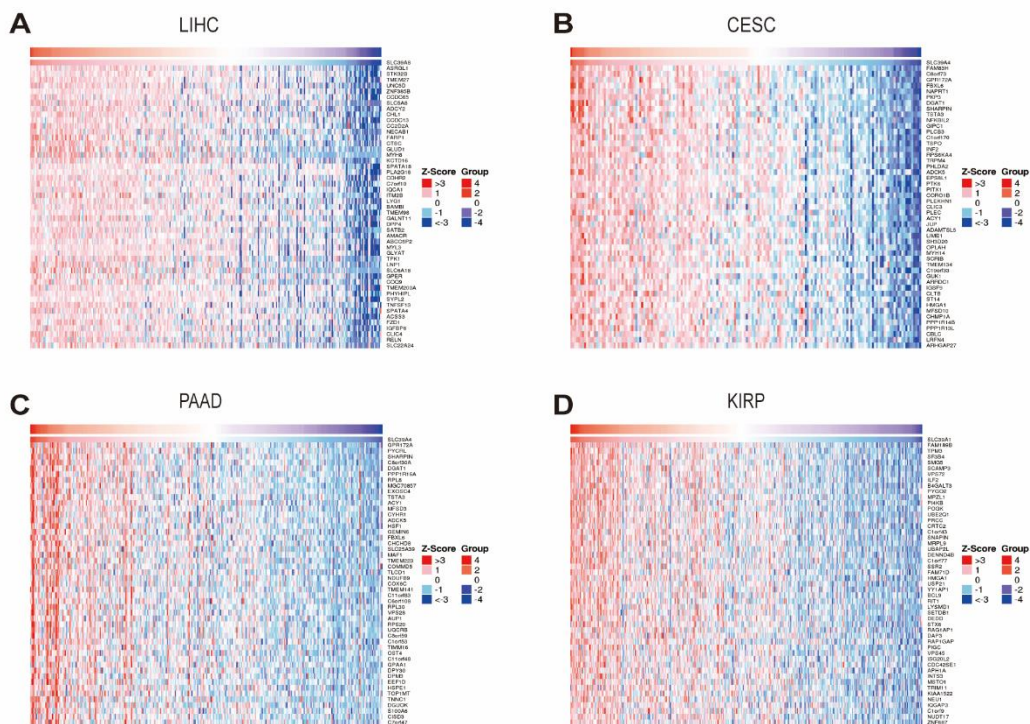


Figure S5. Top 50 genes positively correlated with *SLC39A1* expression in LIHC (A). Top 50 genes positively correlated with *SLC39A4* expression in CESC (B). Top 50 genes positively correlated with *SLC39A4* expression in PAAD (C). Top 50 genes positively correlated with *SLC39A8* expression in KIRP (D).