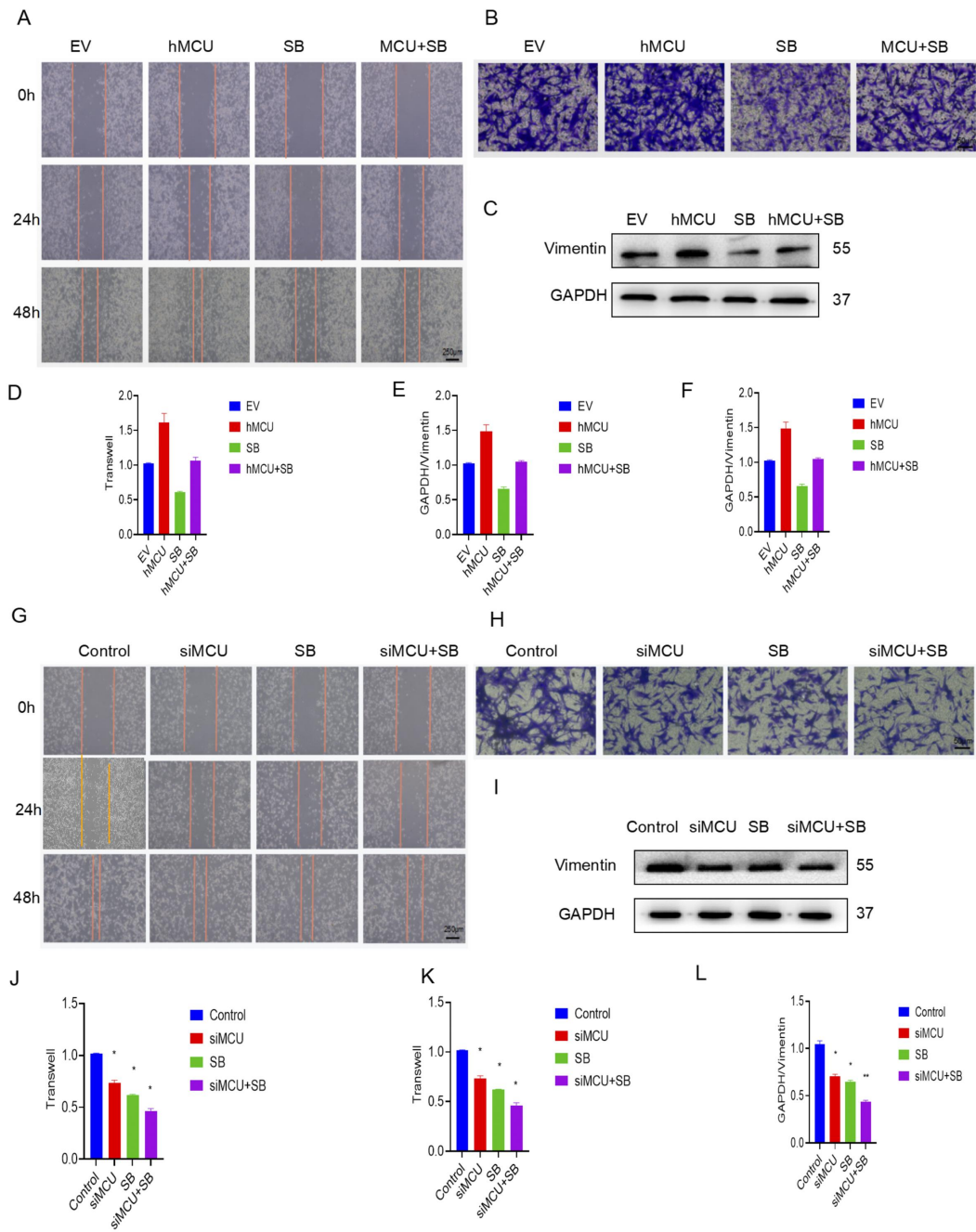


S1

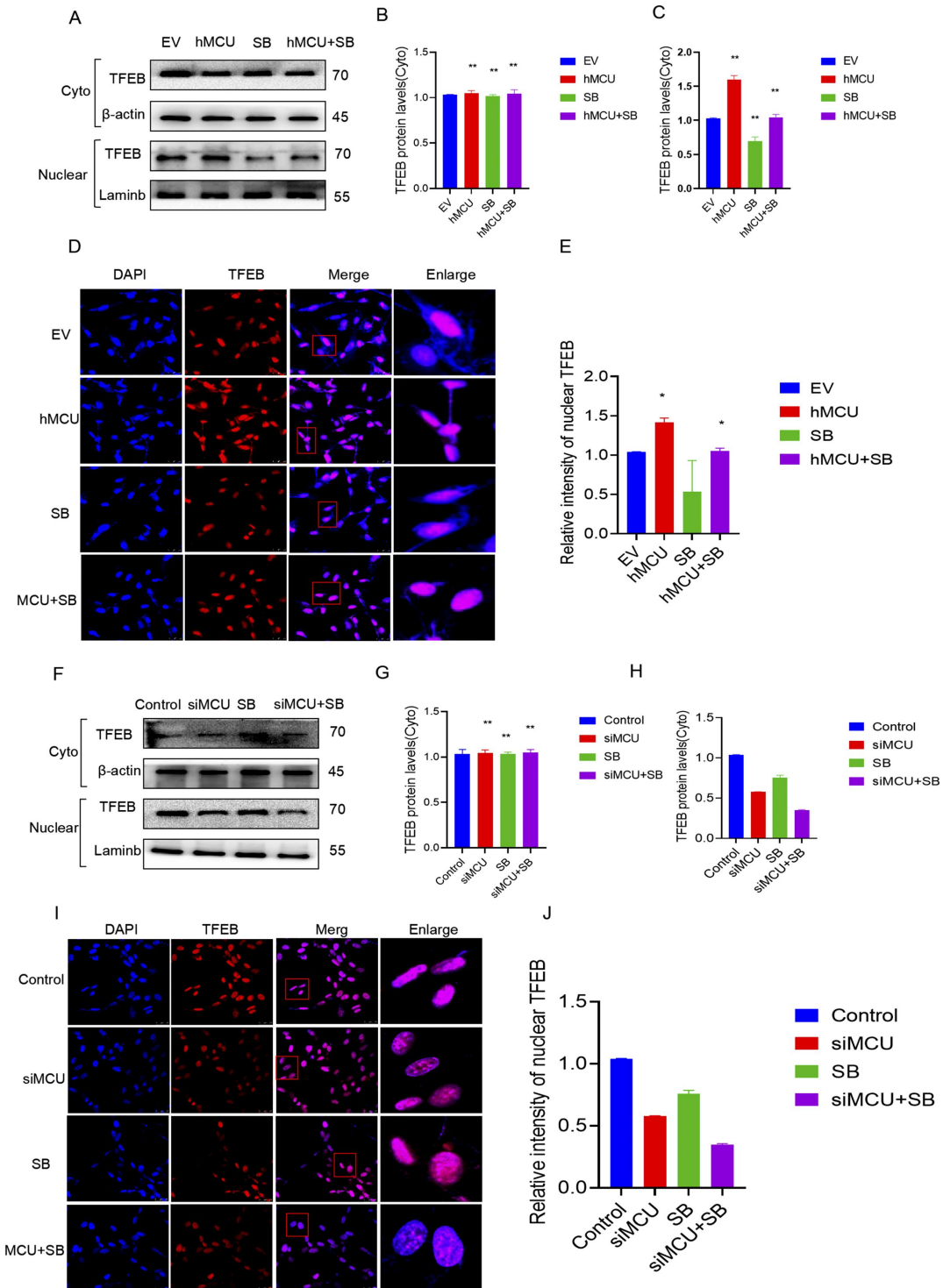
A,B:Analysis of the protein expression changes of E-cadherin, p62, TFEB, vimentin, p-p38, p38, MCU, and lc3 II in NHA, U251, U118, U87 cell lines and the corresponding results,the results are expressed as mean \pm SD (* P <0.05, * * P <0.01).



S2.

A, B, D, E): The VSVG-pLKD-U6-hMCU plasmid was transfected into U87 cells, and SB was added for cell scratch experiment (ruler 250µm) and

transwell experiment (ruler 50 μ m) to detect migration; C, F): WB detects protein Vimentin expression; G,H, J, K):The specific siRNA interference MCU plasmid was transfected into U87 cells and SB was added for cell scratch assay (ruler 250 μ m) and transwell experiment (ruler 50 μ m) to detect the migration; I,L): WB detected the expression of protein Vimentin,the results were expressed as mean \pm SD>(*P < 0.05, **P < 0.01)



S3.

A-C):The hMCU was transfected into U87 cell, SB was added, WB detected TFEB levels in cytoplasm and nucleus;D,E): IF detected the nuclear translocation level of TFEB after adding SB;F-H):The siMCU was transfected into U87cell, SB was added;I-J): After addingSB, IF detected

the nuclear translocation level of TFEB; results are expressed as mean \pm SD. (*P < 0.05, **P < 0.01)