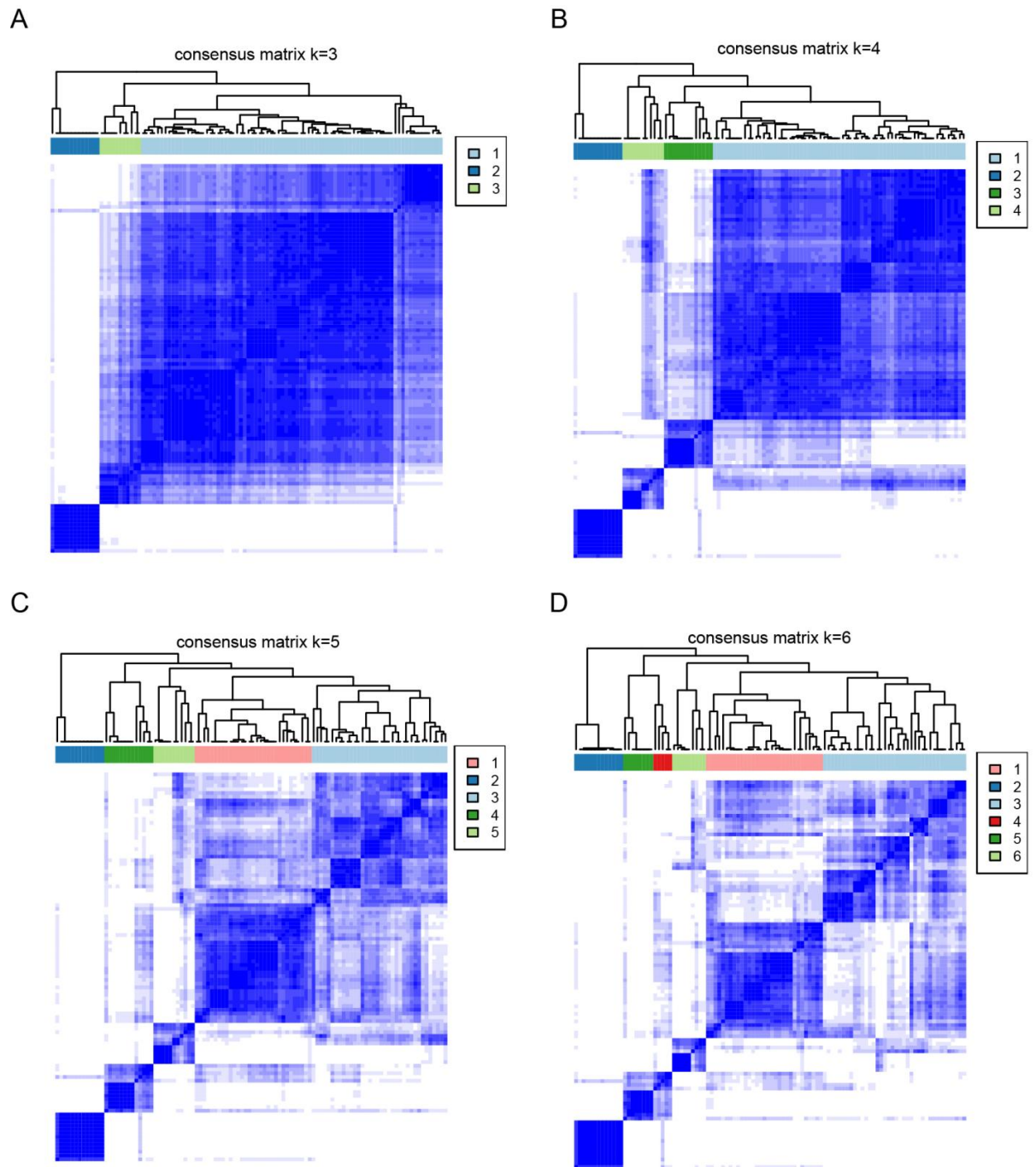
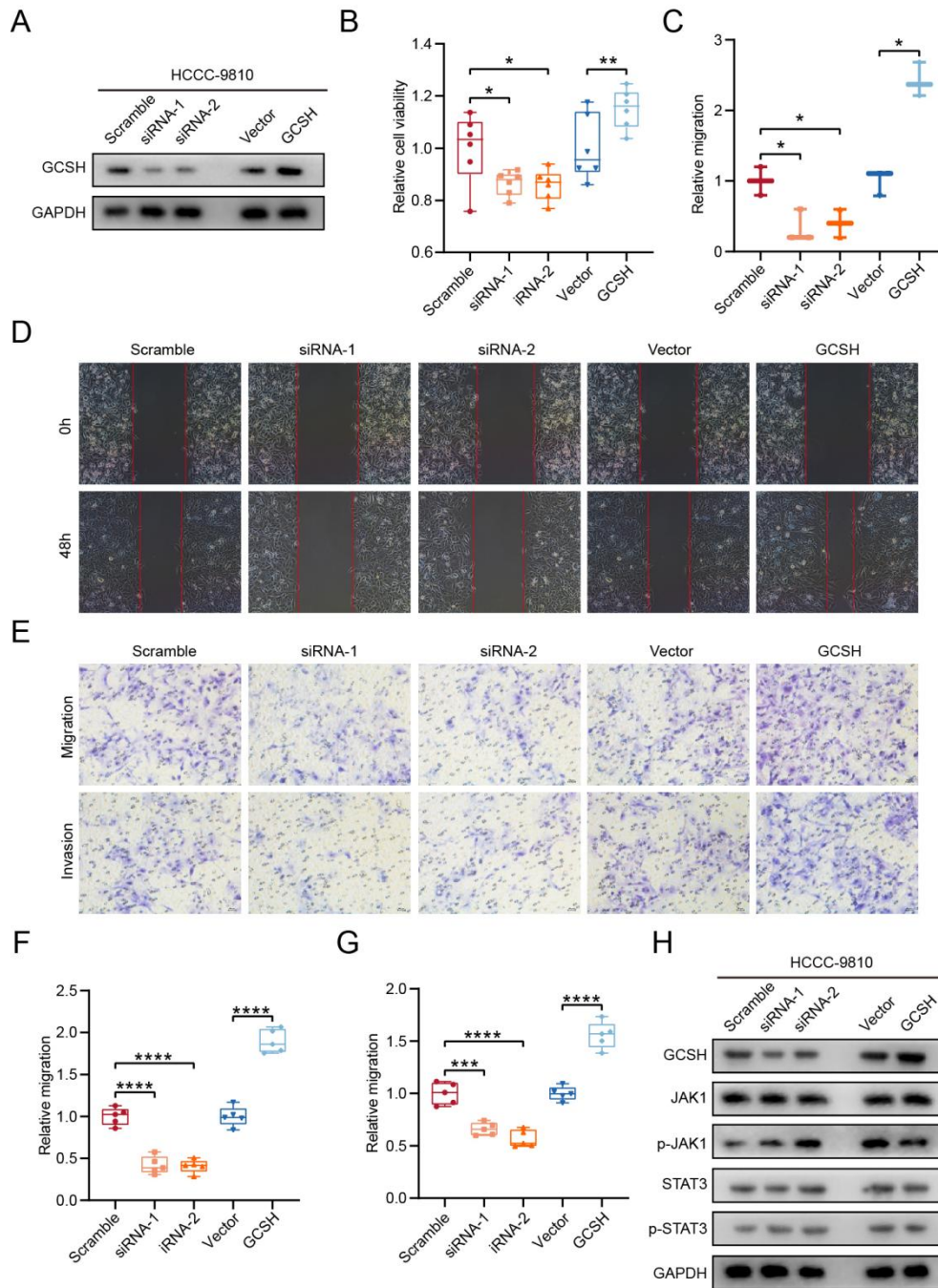


Supplementary Figure



Supplementary Figure1 The clustering effect of different k values in CCA. (A) $k=3$. (B) $k=4$. (C) $k=5$. (D) $k=6$.



Supplementary Figure 2 GCSH functional verification in HCCC-9810 cells. (A) Representative western blots showing the GCSH protein levels in HCCC-9810 cells. (B) The cell proliferation capacity of HCCC-9810 cells using CCK8 assay. (C and D) The cell migratory capacity of HCCC-9810 cells using Wound Healing assay. (E-G) The cell migratory and invasive capacity of HCCC-9810 cells using transwell assay. (H) Representative western blots showing JAK-STAT signaling related proteins expression level in HCCC-9810 cells.

Supplementary Table

Supplementary Table 1. The clinical characteristic of 116 patients with CCA

Variable		Mean ± s.e.m/Number(%)
Age (years)		60±12.05
Gender	Male	68 (58.6%)
	Female	48 (41.4%)
Tumor number	Single	86 (74.1%)
	Multiple	30 (25.9%)
Tumor size (cm)	≤5	59 (50.9%)
	> 5	57 (49.1%)
Differentiation grade	High	0
	Medium	64 (55.2%)
	Medium-	
	Low	43 (37.1%)
	Low	9 (7.7%)
MVI	No	81 (69.8%)
	Yes	35 (30.2%)
Lymphatic metastasis	No	75 (64.7%)
	Yes	41 (35.3%)
Distant metastasis	No	110 (94.8%)
	Yes	6 (5.2%)
Stage	I	50 (43.1%)
	II	19 (16.4%)
	III	43 (37.1%)
	IV	4 (3.4%)

Supplementary Table 2. Two methylation sites associated with prognosis in CCA

ID	HR	HR.95L	HR.95H	pvalue
cg09787394	4.70E-11	4.97E-21	0.4448724	0.0424506
cg17746819	1811.0535	1.2934668	2535754.8	0.0423989