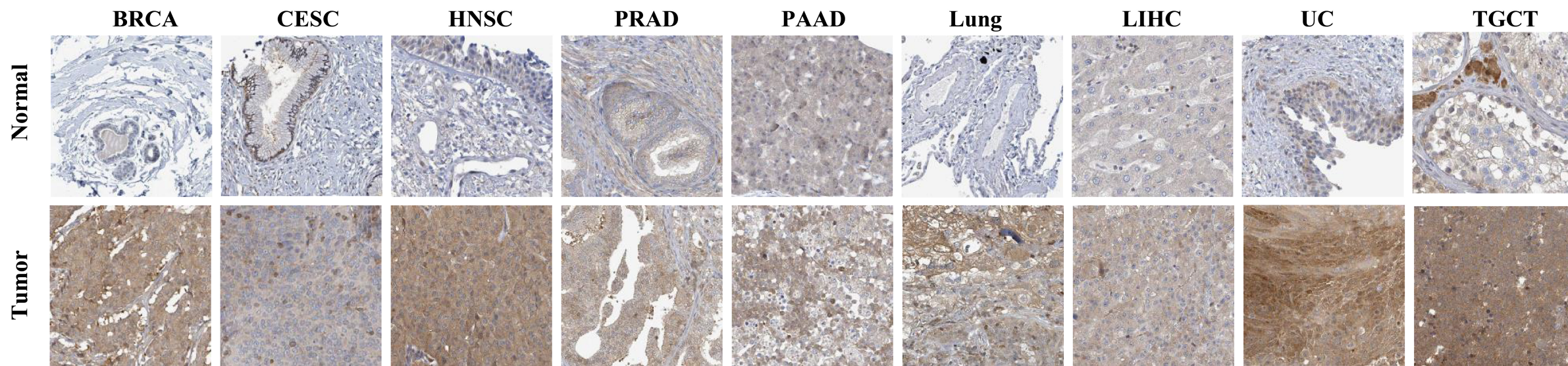
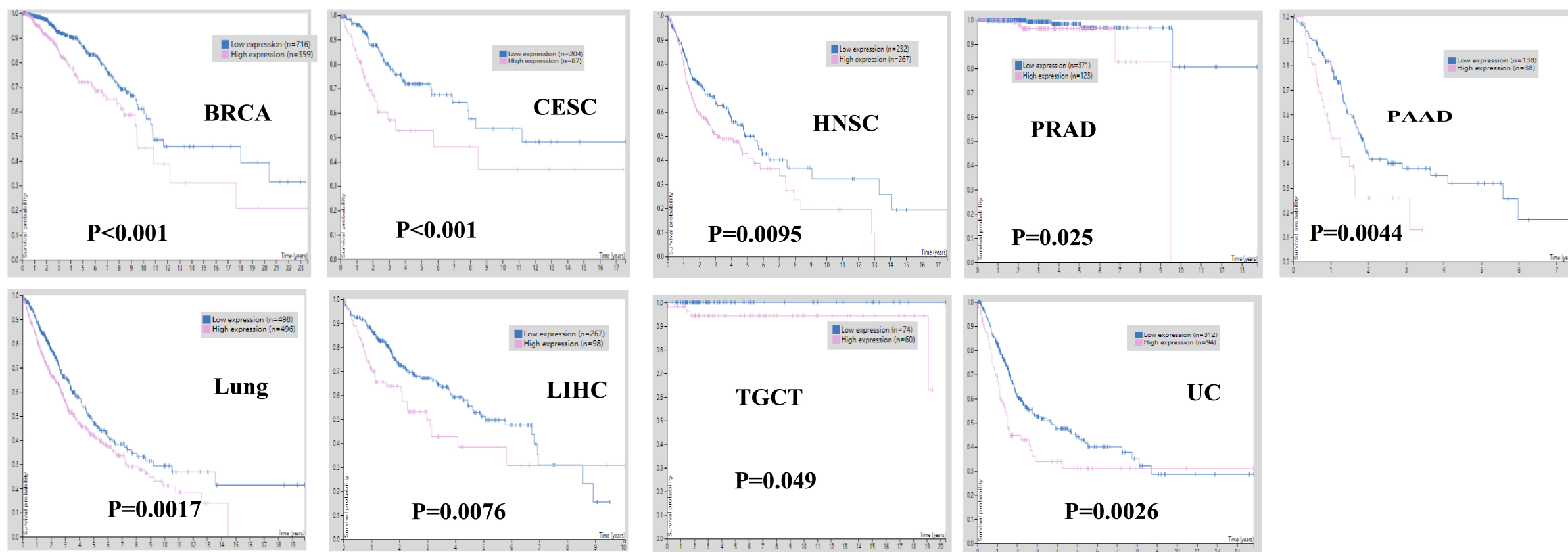
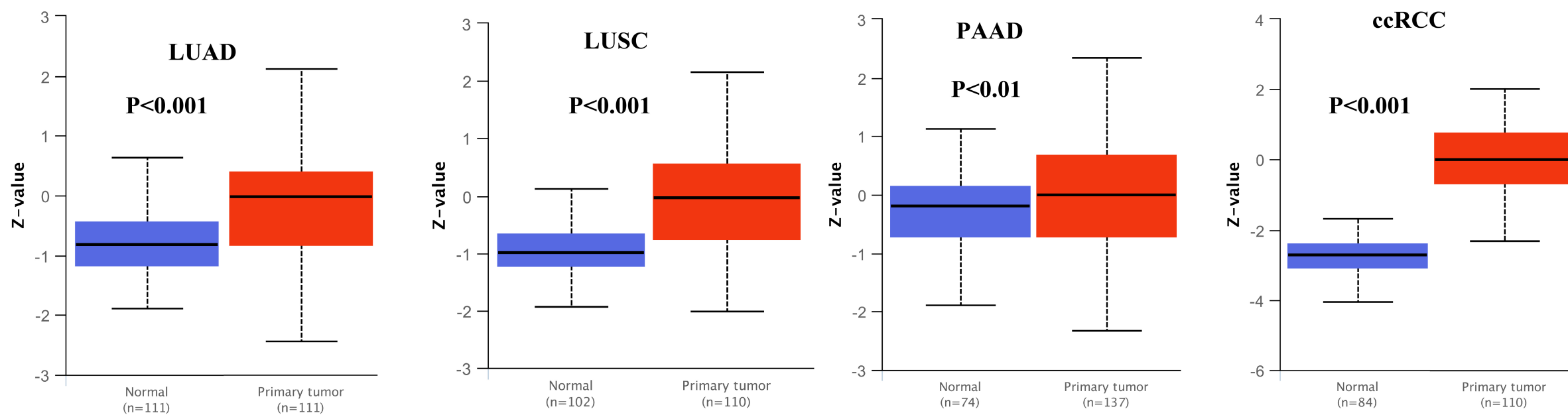
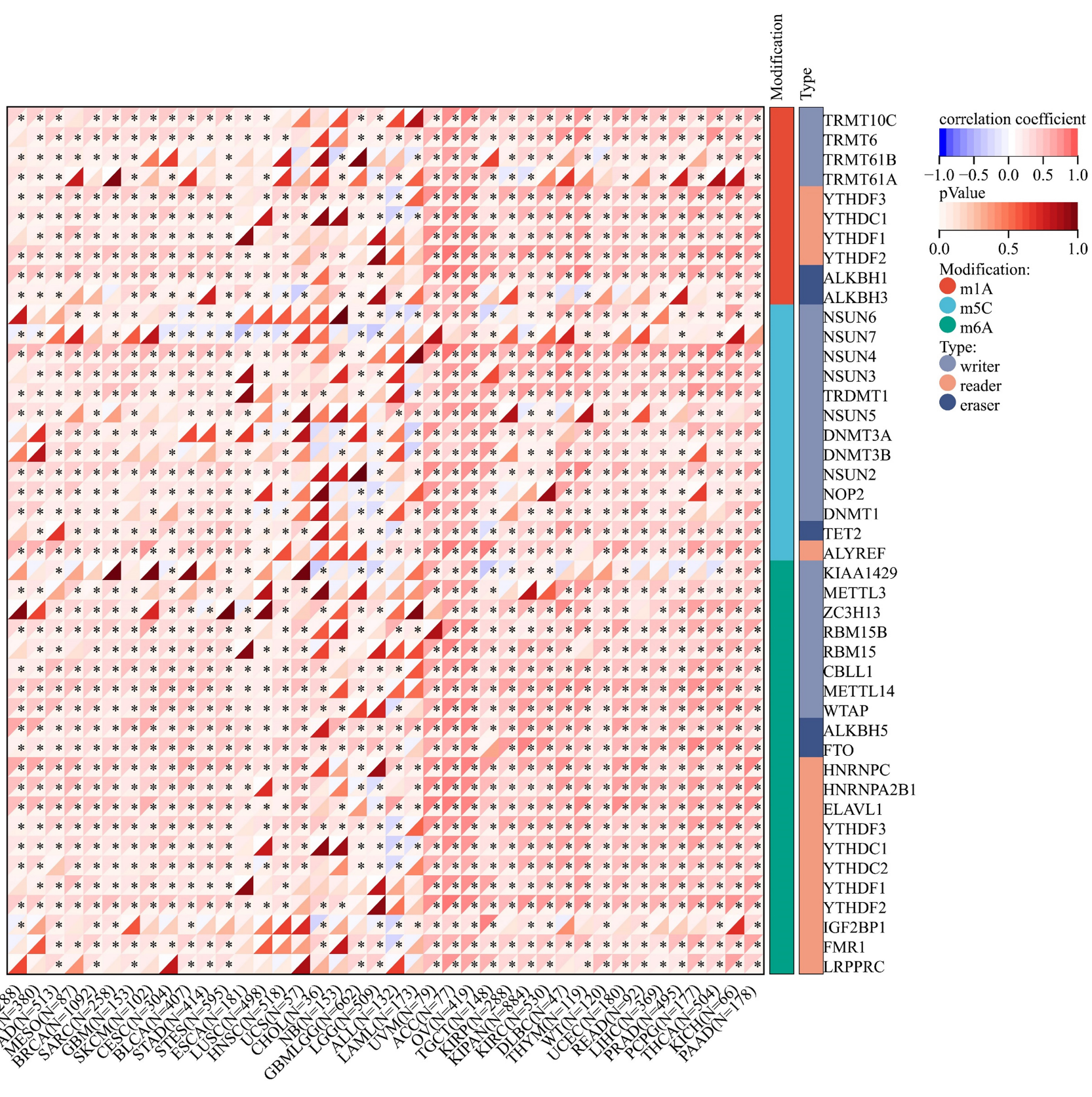
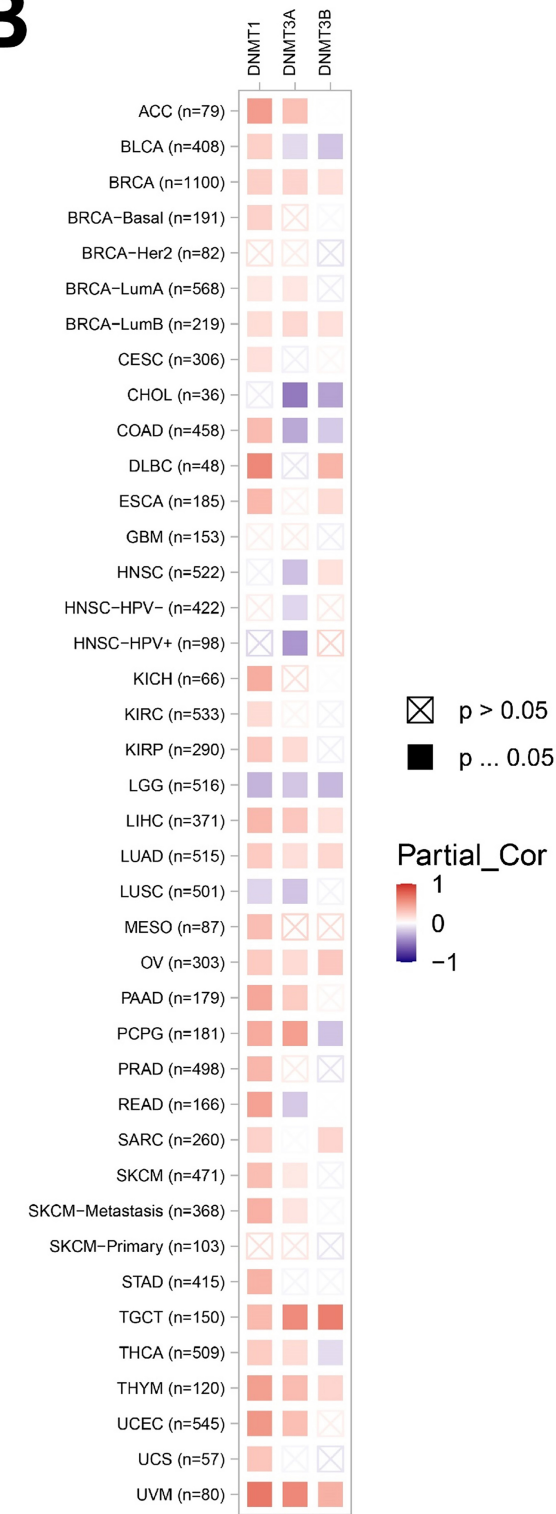
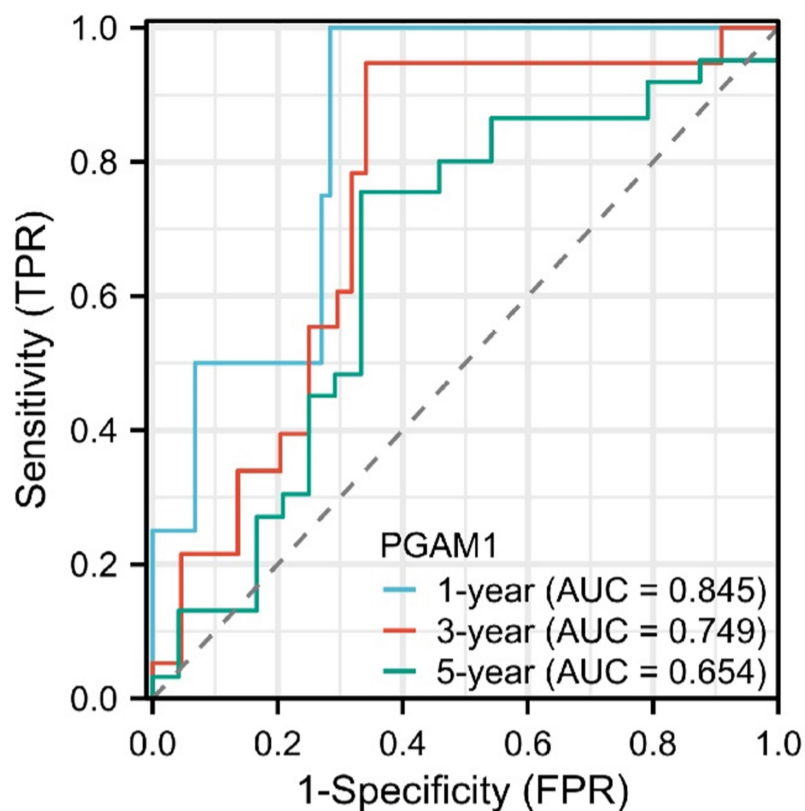


A**B****C**

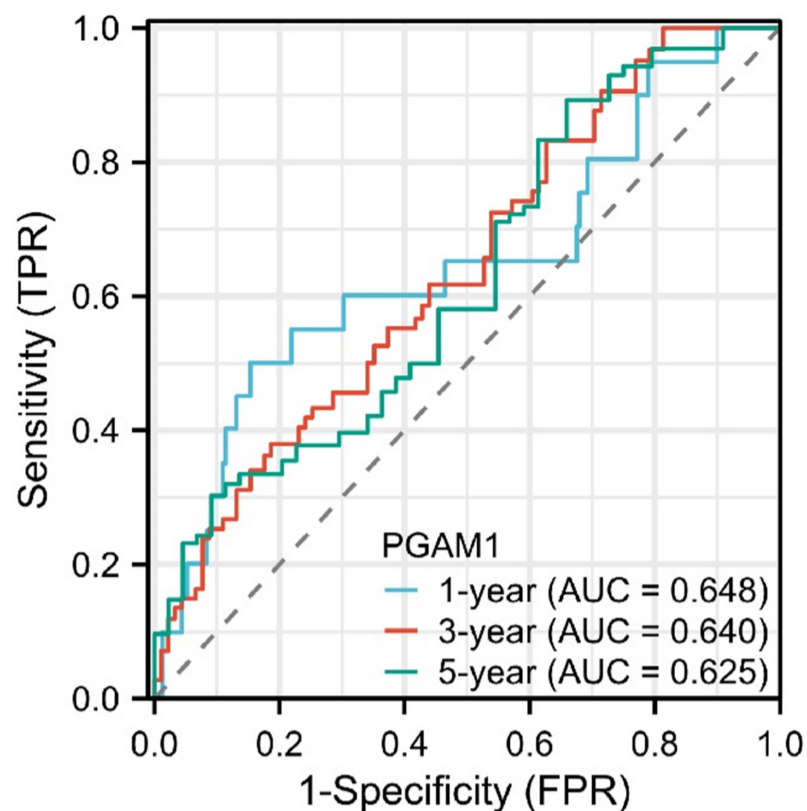
A**B**

COAD (n=288)
COADREAD (n=380)
LUAD (n=515)
MESO (n=87)
BRCA (n=1100)
SARC (n=260)
GBM (n=153)
SKCM (n=471)
CESC (n=306)
BLCA (n=408)
STAD (n=415)
STESN (n=407)
ESCA (n=185)
LUSC (n=501)
HNSC (n=522)
HNSC-HPV- (n=422)
HNSC-HPV+ (n=98)
CHOL (n=36)
UCS (n=57)
GBMLGG (n=53)
LGG (n=662)
ALL (n=209)
LAML (n=32)
UVM (n=80)
ACC (n=79)
TOVN (n=91)
TGCT (n=150)
KIPAN (n=419)
KIRP (n=290)
KIRC (n=533)
DLBC (n=48)
THYM (n=120)
UCEC (n=545)
READ (n=166)
LIHC (n=371)
PCPG (n=181)
PCPN (n=369)
THCA (n=509)
KICH (n=66)
PAAD (n=179)

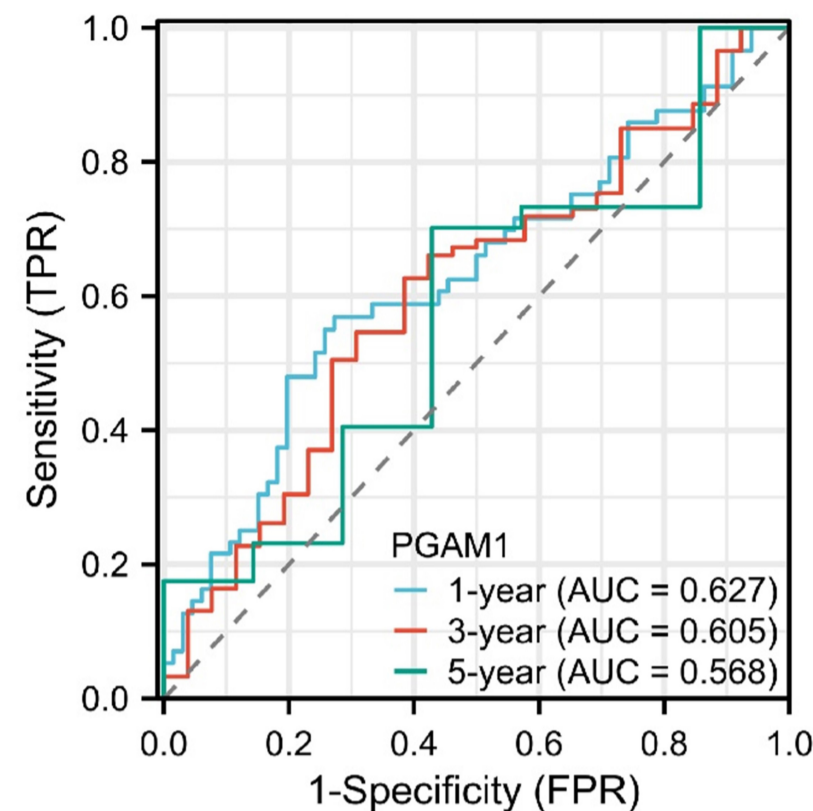
ACC



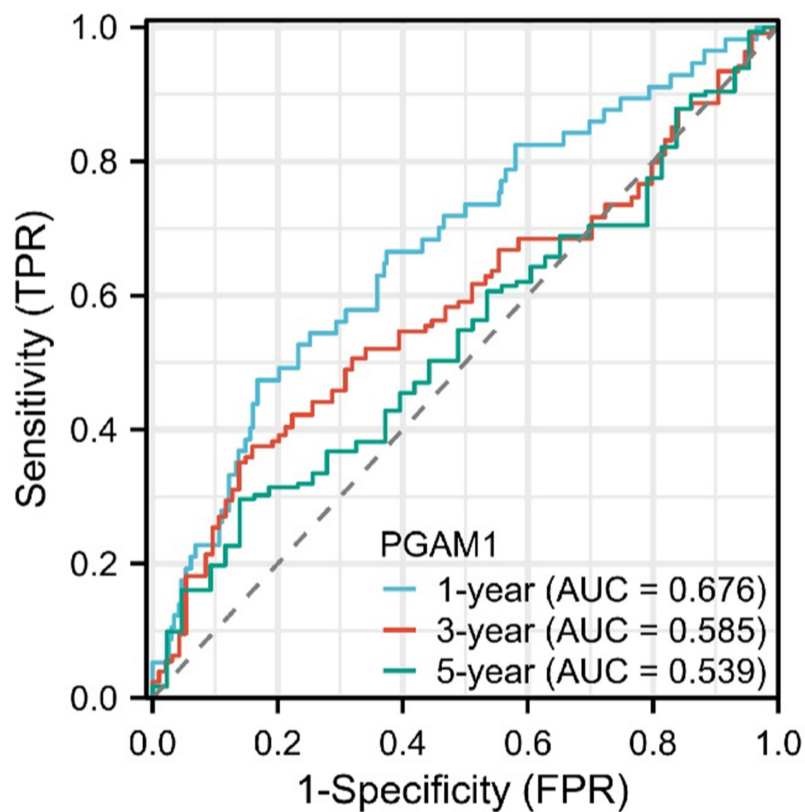
CESC



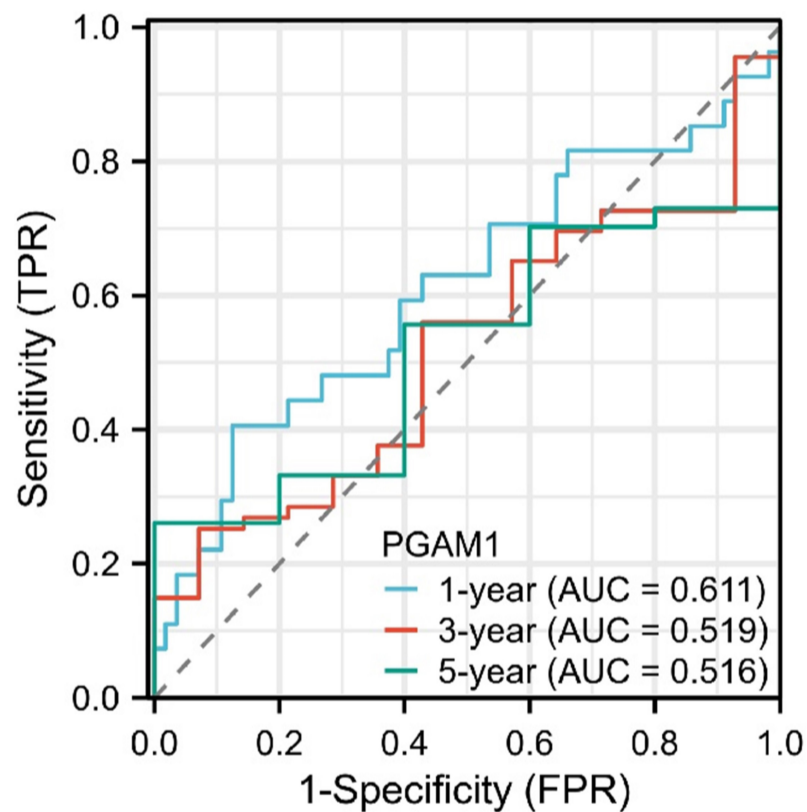
LAML



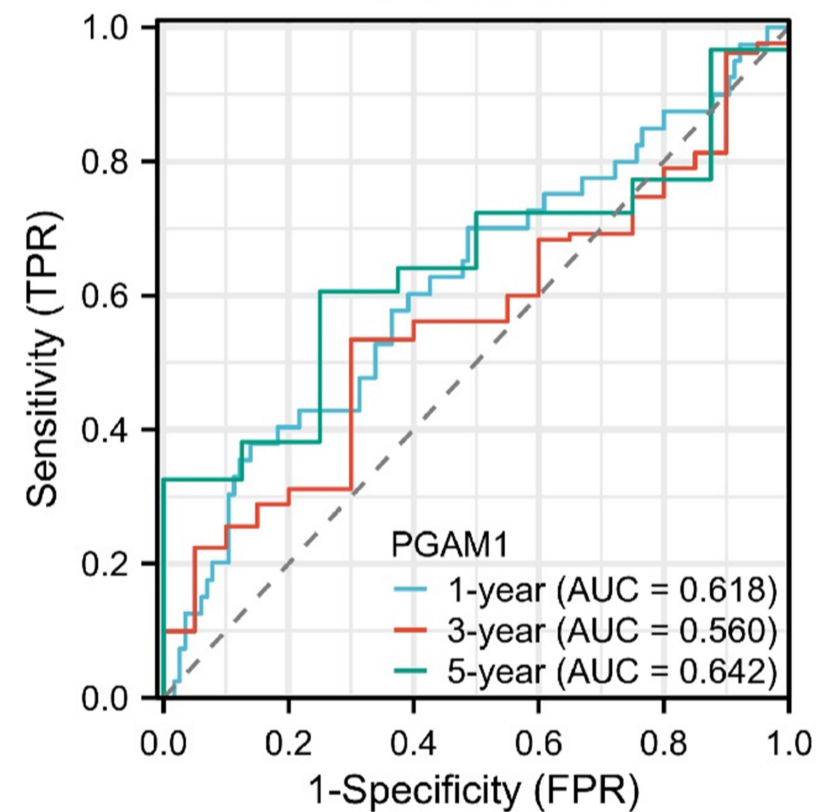
LIHC



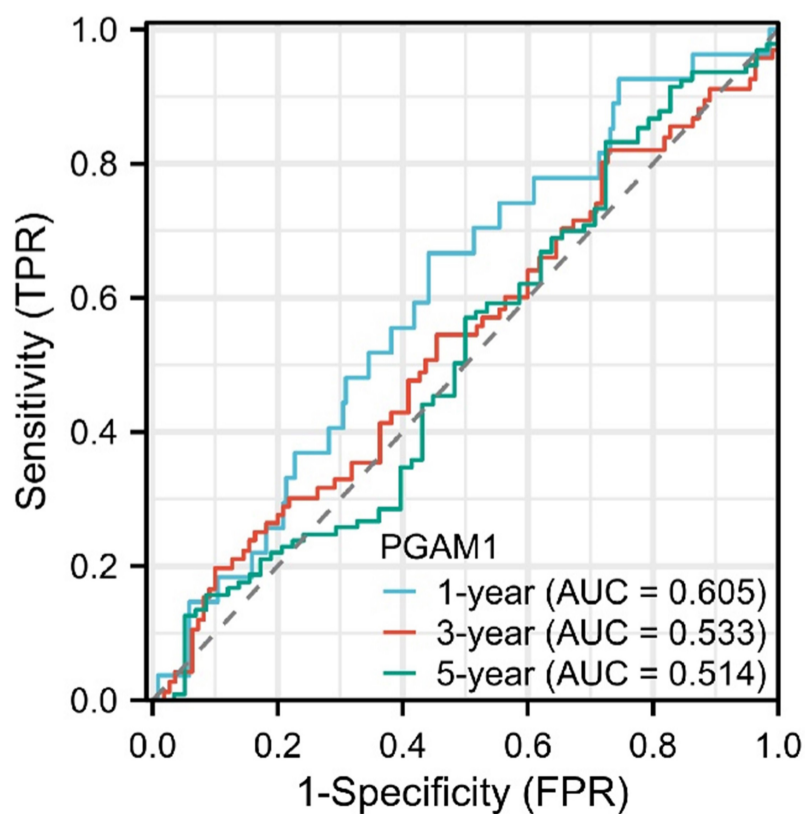
MESO



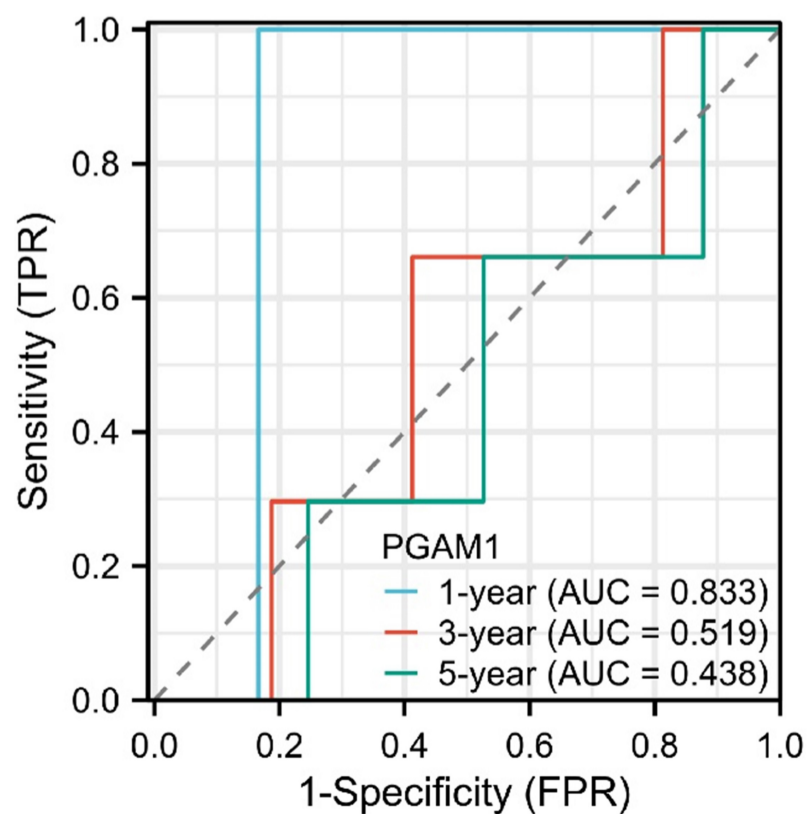
PAAD



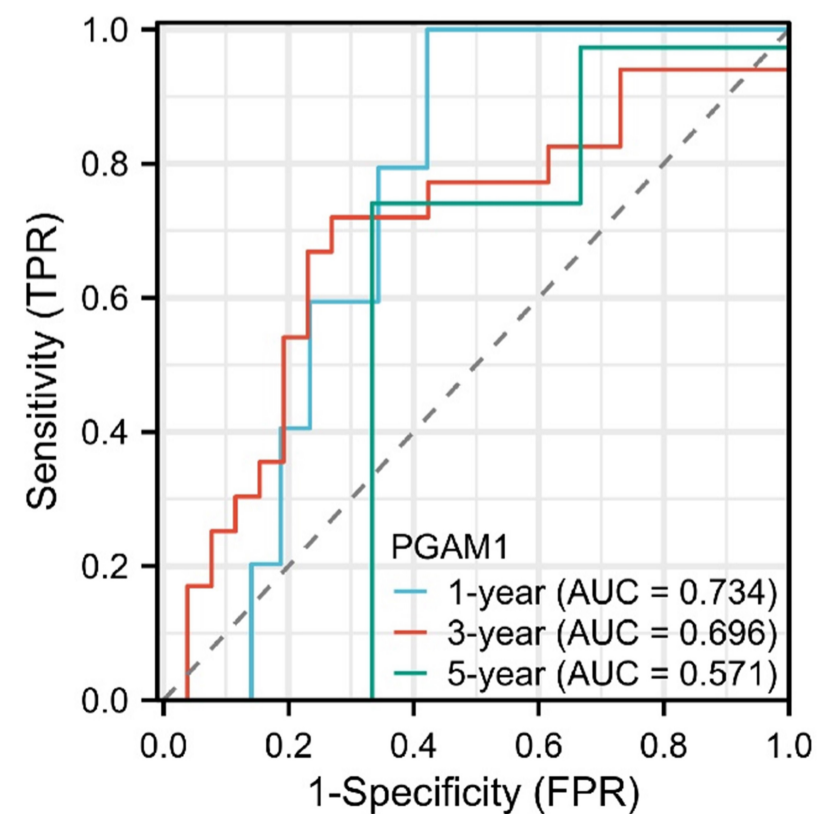
SARC

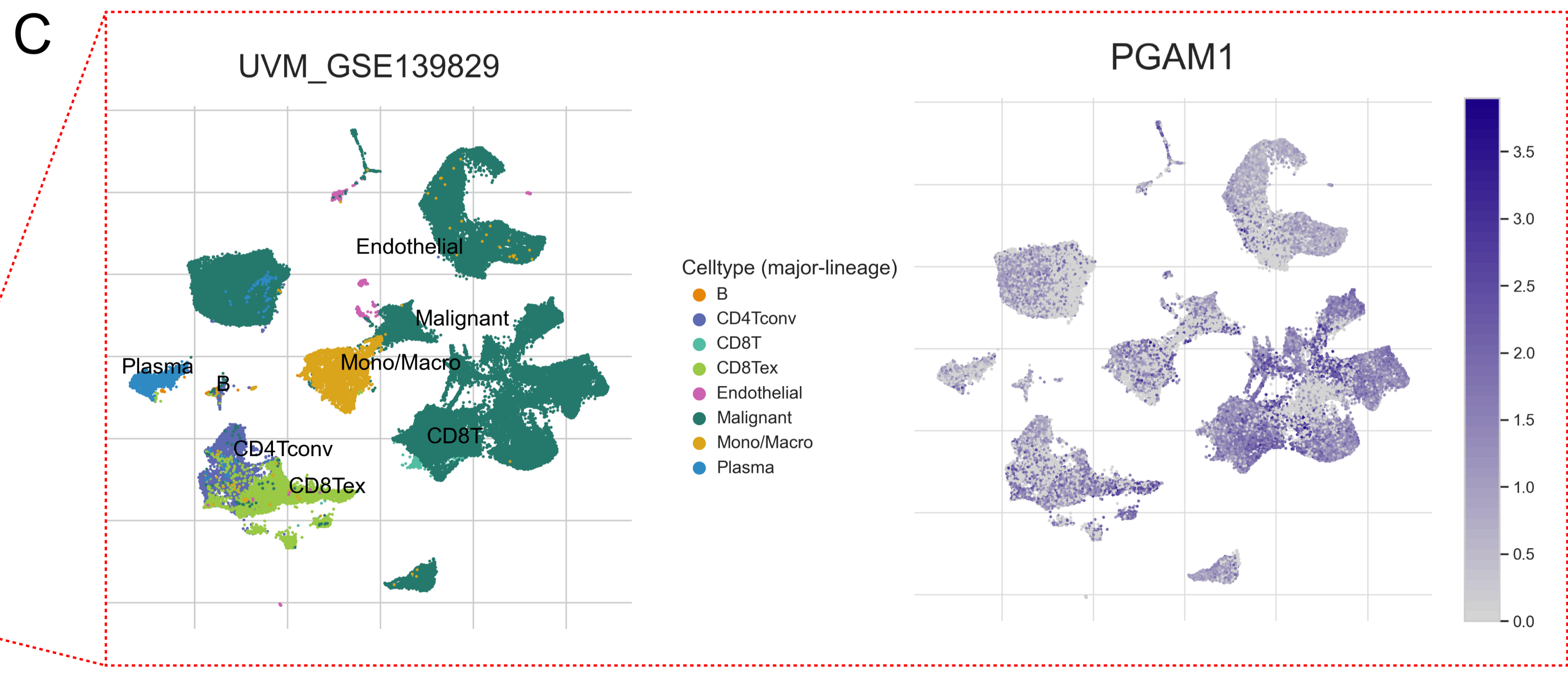
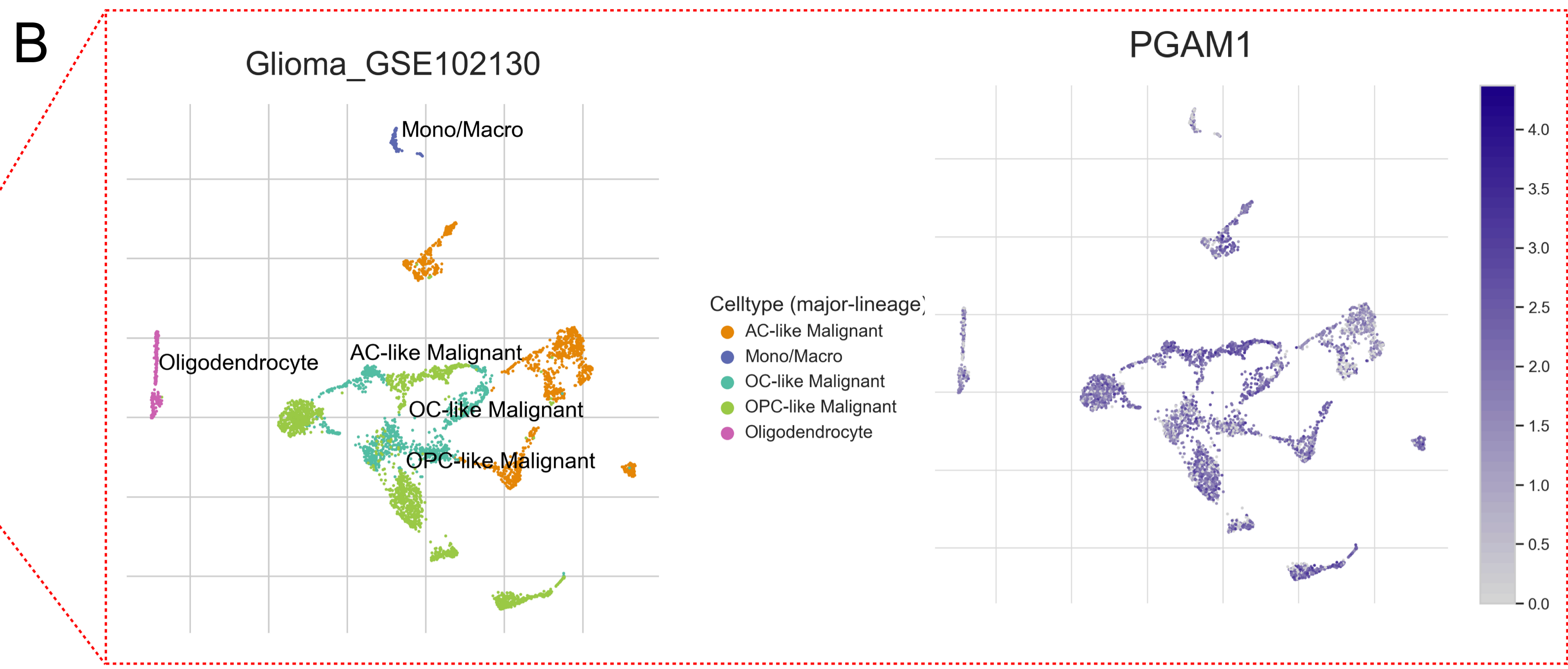
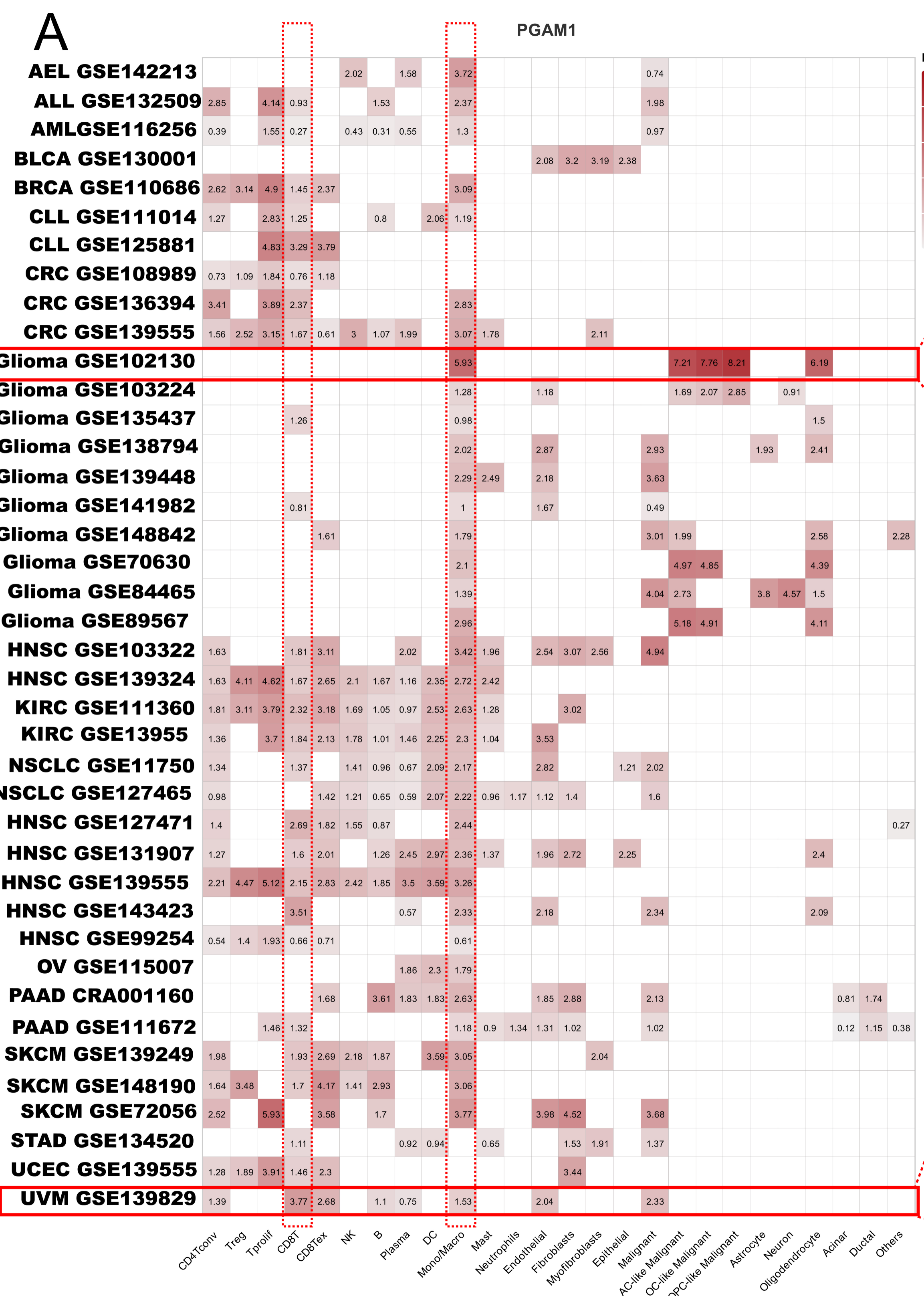


TGCT



UVM





LAML	***	***	***
KIPAN	***	***	***
PAAD	***		**
DLBC			*
UVM	*	**	**
READ		*	
PCPG	*		
COADREAD	**	***	***
COAD	*	***	***
PRAD	**		*
KIRC	*		
LUAD	*		
BLCA		*	*
HNSC		**	
LUSC		***	**
THYM		**	*
SKCM		*	
ESCA		***	**
SARC	*		*
STES	***	***	***
ACC		***	**
GBMLGG	***	***	***
TGCT	*	**	***
LGG	***	***	***
UCEC	***	**	***

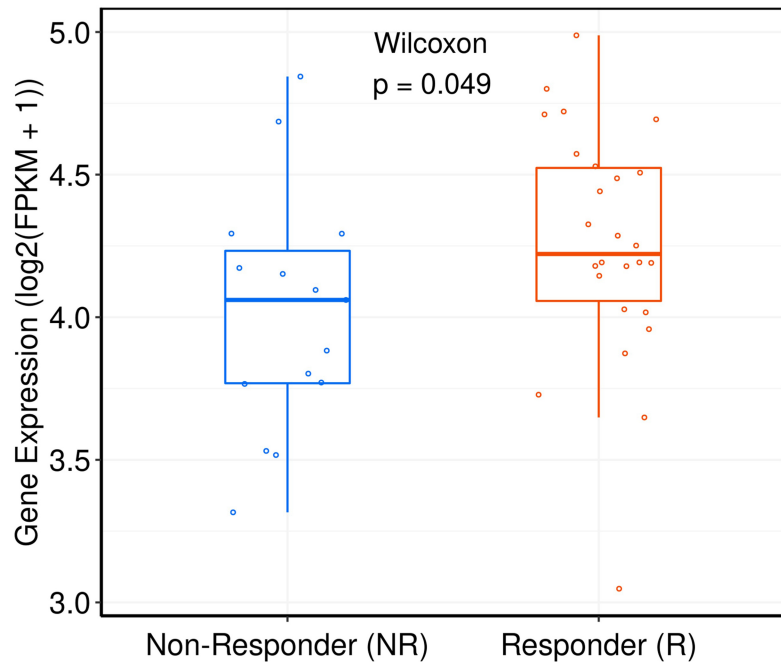
* p < 0.05
** p < 0.01
*** p < 0.001

C_{gr}

1.0
0.5
0.0
-0.5
-1.0

StromalScore
ImmuneScore
ESTIMATEScore

STAD-PRJEB25780_anti-PD-1

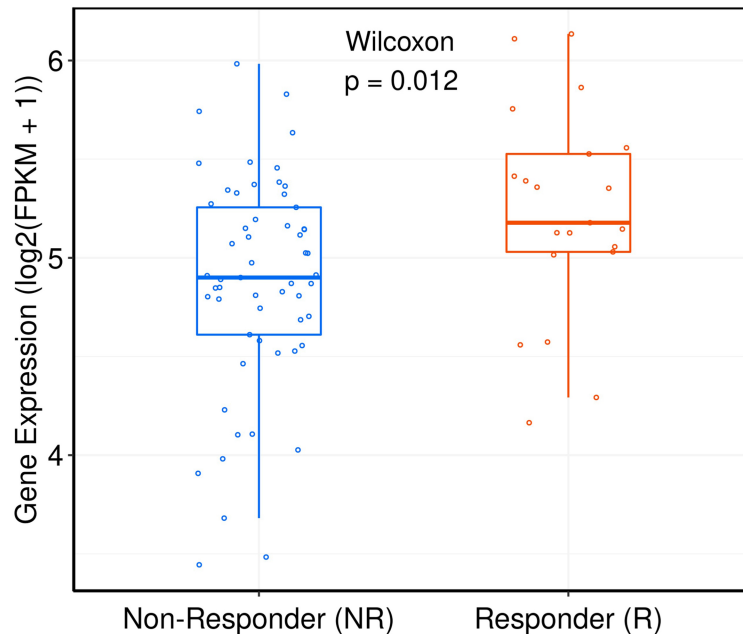


group

Non-Responder (NR)

Responder (R)

Melanoma-PRJEB23709_anti-CTLA-4+anti-PD-1



group

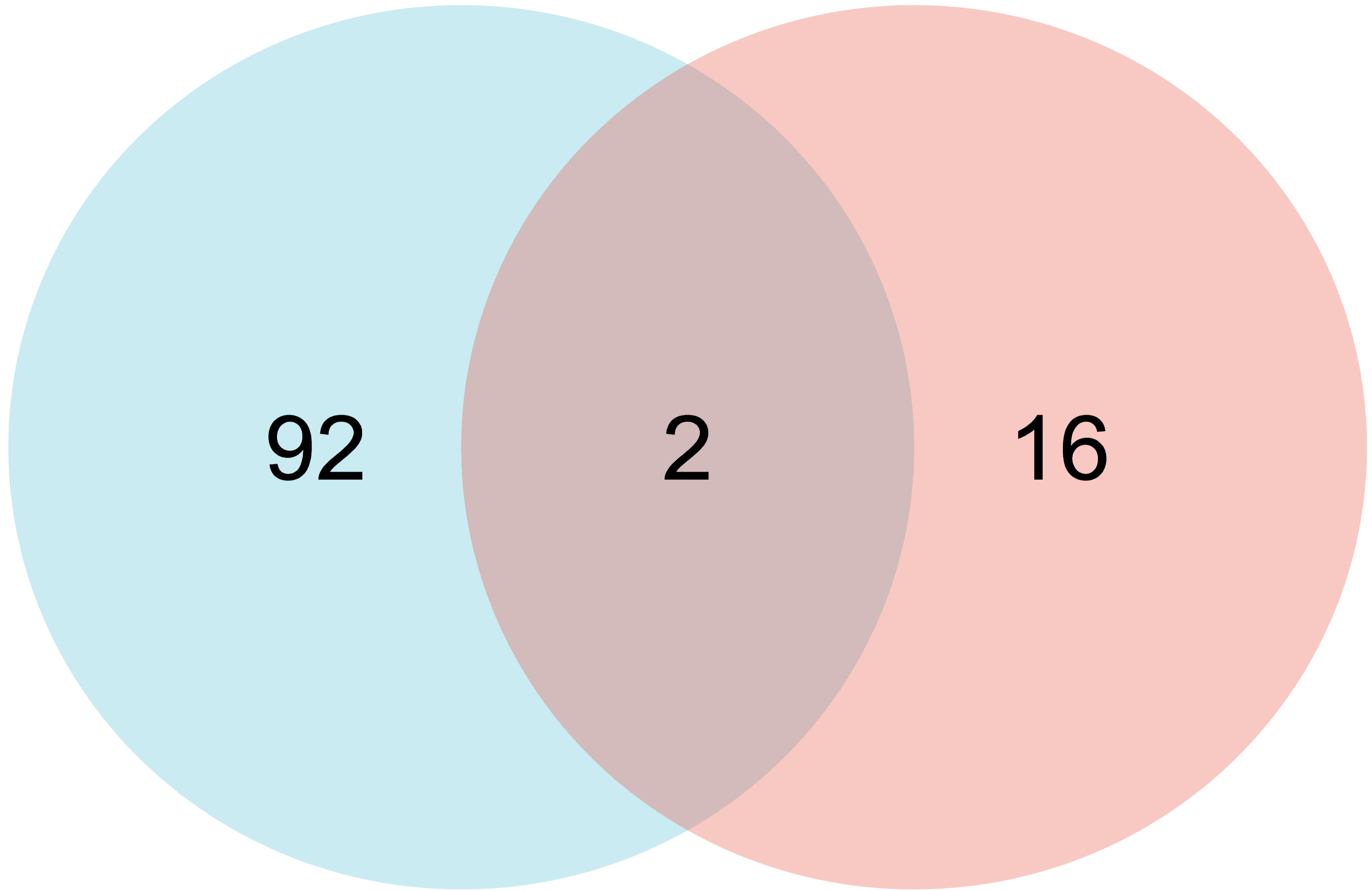
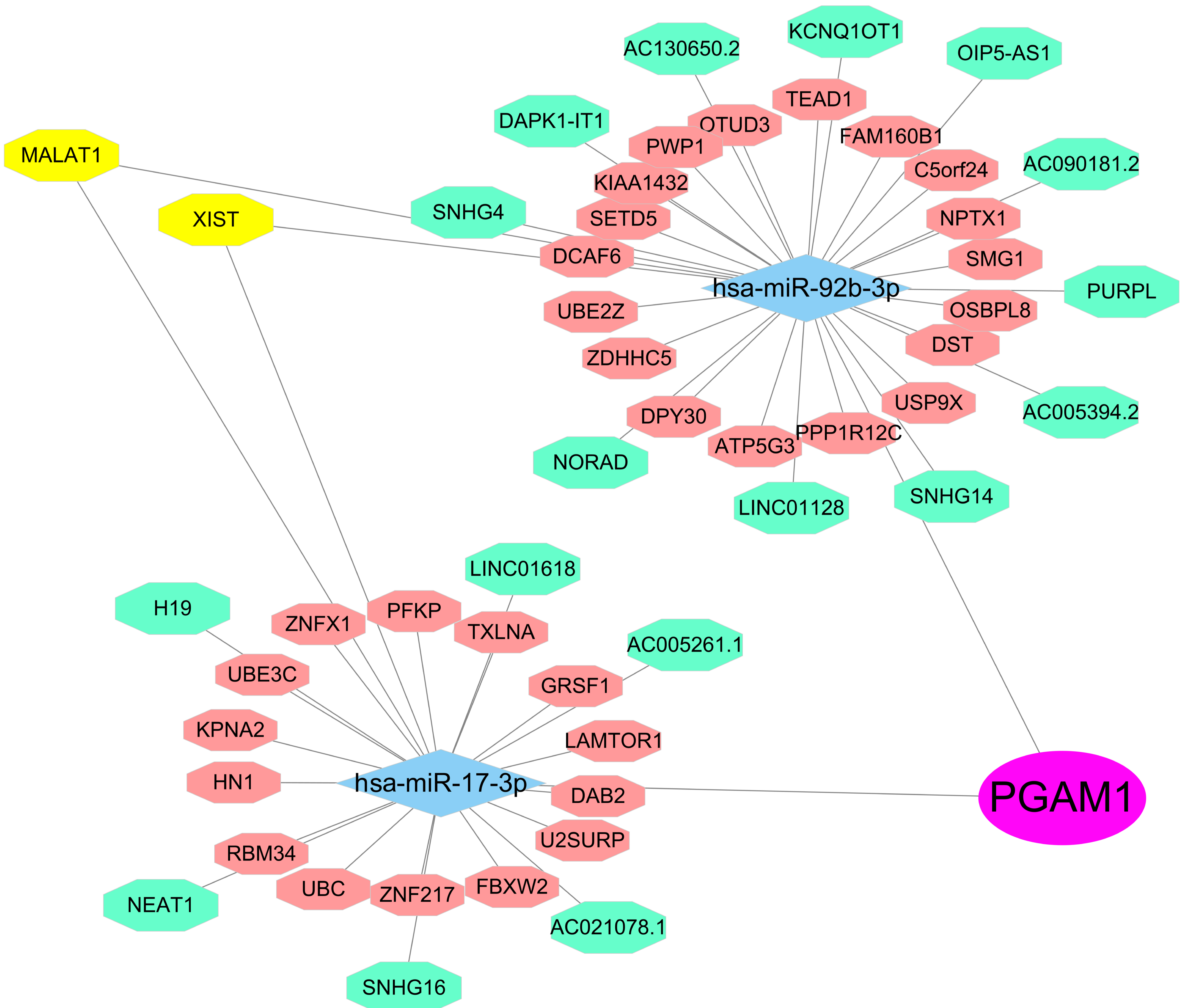
Non-Responder (NR)

Responder (R)

A

miRDB

DiIANA Tools

**B**

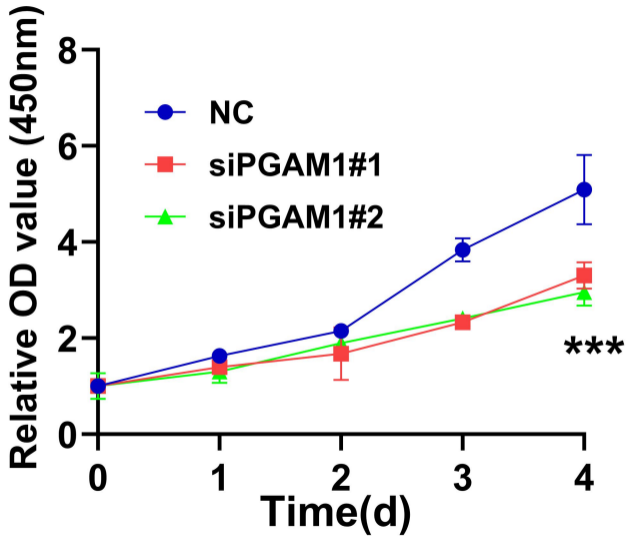


Table1. Clinical significance analysis of PGAM1 in ACC

Characteristics	Low expression of PGAM1	High expression of PGAM1	P value
n	39	40	
Pathologic T stage, n (%)			0.117
T1	6 (7.8%)	3 (3.9%)	
T2	24 (31.2%)	18 (23.4%)	
T3	3 (3.9%)	5 (6.5%)	
T4	5 (6.5%)	13 (16.9%)	
Pathologic N stage, n (%)			0.168
N0	36 (46.8%)	32 (41.6%)	
N1	2 (2.6%)	7 (9.1%)	
Pathologic stage, n (%)			0.047
Stage I	6 (7.8%)	3 (3.9%)	
Stage II	22 (28.6%)	15 (19.5%)	
Stage III	7 (9.1%)	9 (11.7%)	
Stage IV	3 (3.9%)	12 (15.6%)	
Clinical M stage, n (%)			0.011
M0	35 (45.5%)	27 (35.1%)	
M1	3 (3.9%)	12 (15.6%)	
Primary therapy outcome, n			0.061
PD	5 (7.5%)	13 (19.4%)	
SD	1 (1.5%)	1 (1.5%)	
PR	1 (1.5%)	0 (0%)	
CR	29 (43.3%)	17 (25.4%)	
Age, n (%)			0.732
≤ 50	21 (26.6%)	20 (25.3%)	
> 50	18 (22.8%)	20 (25.3%)	

Table2. Clinical significance analysis of PGAM1 in CEAC

Characteristics	Low expression of PGAM1	High expression of PGAM1	P value
n	153	153	
Pathologic T stage, n (%)			0.006
T1	80 (32.9%)	60 (24.7%)	
T2	39 (16%)	33 (13.6%)	
T3&T4	8 (3.3%)	23 (9.5%)	
Pathologic N stage, n (%)			0.378
N0	75 (38.5%)	59 (30.3%)	
N1	30 (15.4%)	31 (15.9%)	
Pathologic M stage, n (%)			0.345
M0	56 (21.9%)	60 (23.4%)	
M1	4 (1.6%)	7 (2.7%)	
MX	71 (27.7%)	58 (22.7%)	
Clinical stage, n (%)			0.005
Stage I	94 (31.4%)	68 (22.7%)	
Stage II	34 (11.4%)	35 (11.7%)	
Stage III	15 (5%)	31 (10.4%)	
Stage IV	7 (2.3%)	15 (5%)	
Primary therapy outcome, n			0.105
PD	9 (4.1%)	14 (6.4%)	
SD	3 (1.4%)	3 (1.4%)	
PR	1 (0.5%)	7 (3.2%)	
CR	96 (43.8%)	86 (39.3%)	
Histological type, n (%)			< 0.001
Adenocarcinoma	42 (13.7%)	5 (1.6%)	
Adenosquamous	1 (0.3%)	5 (1.6%)	
Squamous cell carcinoma	110 (35.9%)	143 (46.7%)	
Histologic grade, n (%)			0.953
G1	9 (3.3%)	10 (3.6%)	
G2	70 (25.5%)	65 (23.7%)	
G3	63 (23%)	56 (20.4%)	
G4	1 (0.4%)	0 (0%)	

Characteristics	Low expression of PGAM1	High expression of PGAM1	P value
Age, n (%)			0.347
<= 50	98 (32%)	90 (29.4%)	
> 50	55 (18%)	63 (20.6%)	

Table3. Clinical significance analysis of PGAM1 in UVM

Characteristics	Low expression of PGAM1	High expression of PGAM1	P value
n	38	38	
Pathologic M stage, n			0.186
M0	27 (35.5%)	23 (30.3%)	
M1	0 (0%)	3 (3.9%)	
MX	11 (14.5%)	12 (15.8%)	
Pathologic stage, n			0.018
Stage II	24 (31.6%)	13 (17.1%)	
Stage III	14 (18.4%)	22 (28.9%)	
Stage IV	0 (0%)	3 (3.9%)	
Clinical T stage, n (%)			0.018
T2	2 (2.6%)	2 (2.6%)	
T3	23 (30.3%)	11 (14.5%)	
T4	13 (17.1%)	25 (32.9%)	
Clinical N stage, n (%)			1.000
N0	37 (48.7%)	36 (47.4%)	
NX	1 (1.3%)	2 (2.6%)	
Clinical M stage, n (%)			0.168
M0	37 (48.7%)	33 (43.4%)	
M1	0 (0%)	3 (3.9%)	
MX	1 (1.3%)	2 (2.6%)	
Clinical stage, n (%)			0.005
Stage II	24 (31.6%)	11 (14.5%)	
Stage III	14 (18.4%)	24 (31.6%)	
Stage IV	0 (0%)	3 (3.9%)	
Age, n (%)			0.491
≤ 60	17 (22.4%)	20 (26.3%)	
> 60	21 (27.6%)	18 (23.7%)	

Table4. Clinical significance analysis of PGAM1 in LUAD

Characteristics	Low expression of PGAM1	High expression of PGAM1	P value
n	146	138	
Pathologic T stage, n (%)			< 0.001
T1	65 (22.9%)	27 (9.5%)	
T2	67 (23.6%)	90 (31.7%)	
T3&T4	14 (4.9%)	21 (7.4%)	
Pathologic N stage, n (%)			0.003
N0	110 (38.7%)	80 (28.2%)	
N1	25 (8.8%)	31 (10.9%)	
N2&N3	11 (3.9%)	27 (9.5%)	
Pathologic M stage, n (%)			0.012
M0	143 (50.4%)	126 (44.4%)	
M1	3 (1.1%)	12 (4.2%)	
Pathologic stage, n (%)			< 0.001
Stage I	95 (33.5%)	59 (20.8%)	
Stage II	33 (11.6%)	38 (13.4%)	
Stage III	15 (5.3%)	29 (10.2%)	
Stage IV	3 (1.1%)	12 (4.2%)	
Primary therapy outcome, n (%)			0.093
PD	21 (7.4%)	30 (10.6%)	
SD	17 (6%)	10 (3.5%)	
PR	3 (1.1%)	0 (0%)	
CR	105 (37%)	98 (34.5%)	
Age, n (%)			0.838
<= 65	79 (27.8%)	73 (25.7%)	
> 65	67 (23.6%)	65 (22.9%)	

Table5. Clinical significance analysis of PGAM1 in HNSC

Characteristics	Low expression of PGAM1	High expression of PGAM1	P value
n	252	252	
Pathologic T stage, n (%)			0.060
T1	27 (6%)	18 (4%)	
T2	73 (16.3%)	62 (13.8%)	
T3	39 (8.7%)	57 (12.7%)	
T4	77 (17.2%)	95 (21.2%)	
Pathologic N stage, n (%)			0.702
N0	78 (19%)	93 (22.6%)	
N1	34 (8.3%)	32 (7.8%)	
N2&N3	84 (20.4%)	90 (21.9%)	
Pathologic M stage, n (%)			1.000
M0	103 (54.5%)	85 (45%)	
M1	1 (0.5%)	0 (0%)	
Pathologic stage, n (%)			0.915
Stage I	11 (2.5%)	14 (3.2%)	
Stage II	33 (7.6%)	37 (8.5%)	
Stage III	40 (9.2%)	39 (8.9%)	
Stage IV	122 (28%)	140 (32.1%)	
Clinical T stage, n (%)			0.066
T1	18 (3.7%)	15 (3.1%)	
T2	84 (17.2%)	62 (12.7%)	
T3	55 (11.2%)	76 (15.5%)	
T4	86 (17.6%)	93 (19%)	
Clinical N stage, n (%)			0.671
N0	122 (25.3%)	118 (24.5%)	
N1	38 (7.9%)	42 (8.7%)	
N2	78 (16.2%)	77 (16%)	
N3	2 (0.4%)	5 (1%)	
Clinical M stage, n (%)			1.000
M0	234 (48.9%)	240 (50.1%)	
M1	2 (0.4%)	3 (0.6%)	
Clinical stage, n (%)			0.904

Characteristics	Low expression of PGAM1	High expression of PGAM1	P value
Stage I	9 (1.8%)	10 (2%)	
Stage II	50 (10.2%)	46 (9.4%)	
Stage III	48 (9.8%)	54 (11%)	
Stage IV	137 (28%)	136 (27.8%)	
Primary therapy outcome, n			0.160
PD	14 (3.3%)	27 (6.4%)	
SD	3 (0.7%)	3 (0.7%)	
PR	2 (0.5%)	4 (1%)	
CR	189 (45.1%)	177 (42.2%)	
Histologic grade, n (%)			0.356
G1	27 (5.6%)	35 (7.2%)	
G2	150 (31%)	151 (31.2%)	
G3	62 (12.8%)	57 (11.8%)	
G4	2 (0.4%)	0 (0%)	
Radiation therapy, n (%)			0.035
No	68 (15.4%)	87 (19.7%)	
Yes	156 (35.3%)	131 (29.6%)	

Table 6. Clinical significance analysis of PGAM1 in SKCM

Characteristics	Low expression of PGAM1	High expression of PGAM1	P value
n	155	166	
Pathologic T stage, n			0.668
T1	19 (5.9%)	18 (5.6%)	
T2	32 (10%)	37 (11.5%)	
T3	37 (11.5%)	48 (15%)	
T4	67 (20.9%)	63 (19.6%)	
Pathologic N stage, n			0.885
N0	91 (28.3%)	104 (32.4%)	
N1	29 (9%)	30 (9.3%)	
N2	16 (5%)	15 (4.7%)	
N3	19 (5.9%)	17 (5.3%)	
Pathologic M stage, n			0.086
M0	147 (45.8%)	164 (51.1%)	
M1	8 (2.5%)	2 (0.6%)	
Pathologic stage, n			0.158
Stage I	32 (10%)	39 (12.1%)	
Stage II	52 (16.2%)	64 (19.9%)	
Stage III	63 (19.6%)	61 (19%)	
Stage IV	8 (2.5%)	2 (0.6%)	
Radiation therapy, n			0.014
No	138 (43%)	131 (40.8%)	
Yes	17 (5.3%)	35 (10.9%)	
Age, n (%)			0.015
≤ 60	92 (28.7%)	76 (23.7%)	
> 60	63 (19.6%)	90 (28%)	

Table7. Clinical significance analysis of PGAM1 in BLCA

Characteristics	Low expression of PGAM1	High expression of PGAM1	P value
n	206	206	
Pathologic T stage, n (%)			0.441
T1&T2	67 (17.7%)	56 (14.8%)	
T3	93 (24.6%)	103 (27.2%)	
T4	28 (7.4%)	31 (8.2%)	
Pathologic N stage, n (%)			0.809
N0	114 (31%)	124 (33.7%)	
N1	21 (5.7%)	25 (6.8%)	
N2&N3	43 (11.7%)	41 (11.1%)	
Pathologic M stage, n (%)			0.907
M0	106 (50%)	95 (44.8%)	
M1	6 (2.8%)	5 (2.4%)	
Pathologic stage, n (%)			0.197
Stage I	3 (0.7%)	1 (0.2%)	
Stage II	73 (17.8%)	56 (13.7%)	
Stage III	64 (15.6%)	78 (19%)	
Stage IV	66 (16.1%)	69 (16.8%)	
Primary therapy outcome, n (%)			0.022
PD	24 (6.8%)	46 (13%)	
SD	17 (4.8%)	13 (3.7%)	
PR	11 (3.1%)	11 (3.1%)	
CR	128 (36.1%)	105 (29.6%)	