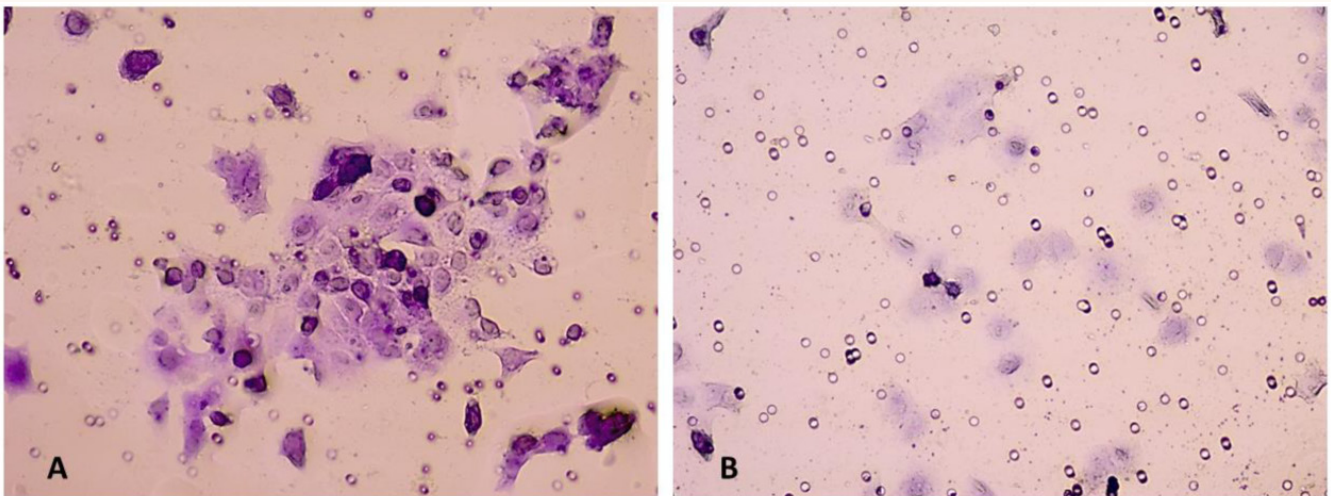


Journal of Cancer

Publication of leading cancer research and oncology



	miR-21	antimiR-21	p
# number of cells mean (SD)	895 (168)	438.7 (18.6)	0.039

COVER FEATURE

Controlling RECK miR21 Promotes Tumor Cell Invasion and Is Related to Biochemical Recurrence in Prostate Cancer

Katia R. M. Leite, *et al.*

ISSN 1837-9664



9 771837 966005



IVYSPRING
INTERNATIONAL PUBLISHER