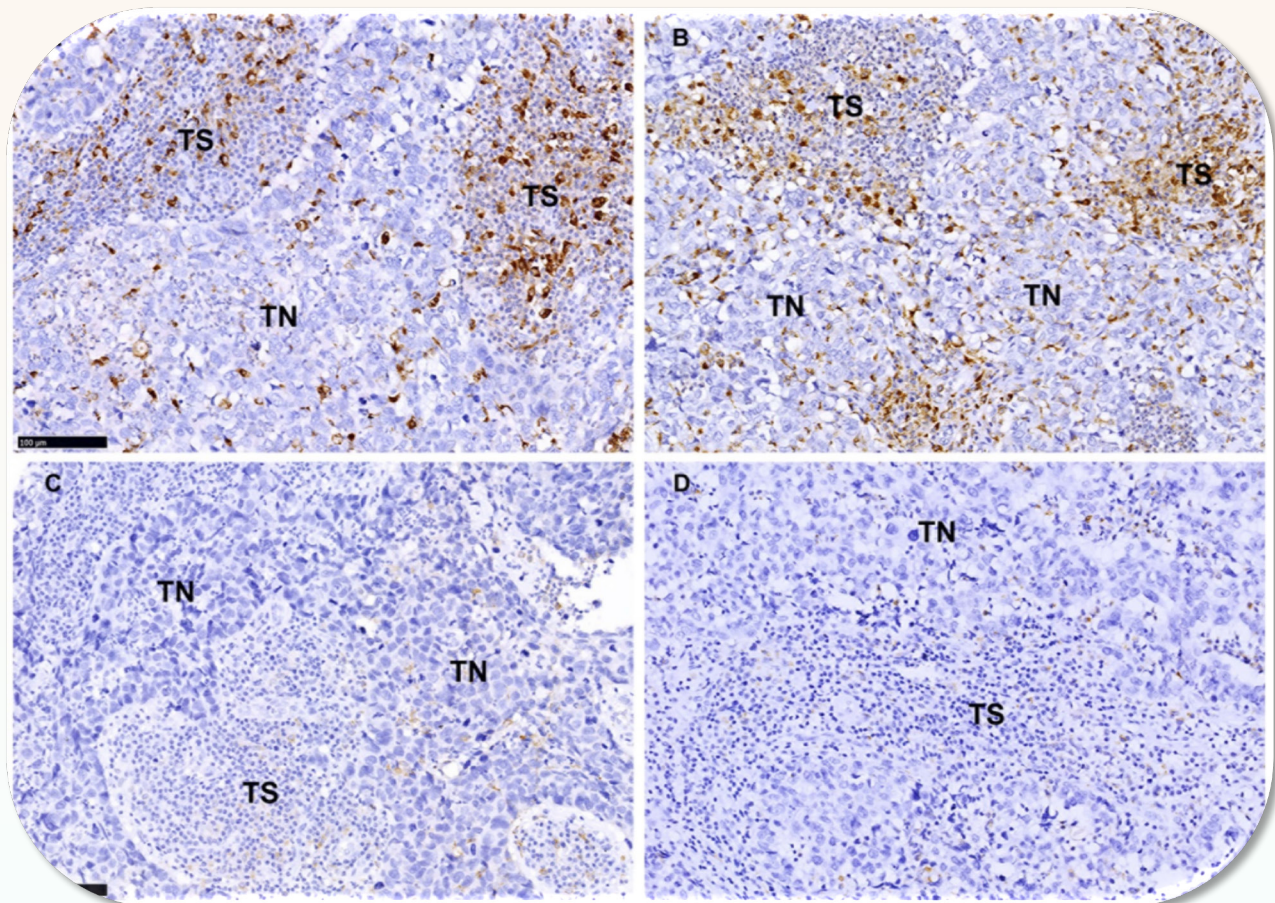


Journal of Cancer



COVER FEATURE: *Mu Yang, et al.* Stromal Infiltration of Tumor-Associated Macrophages Conferring Poor Prognosis of Patients with Basal-Like Breast Carcinoma



ISSN 1837-9664



9 771837 966005



IVYSPRING
INTERNATIONAL PUBLISHER