

Supplementary Figure S1.

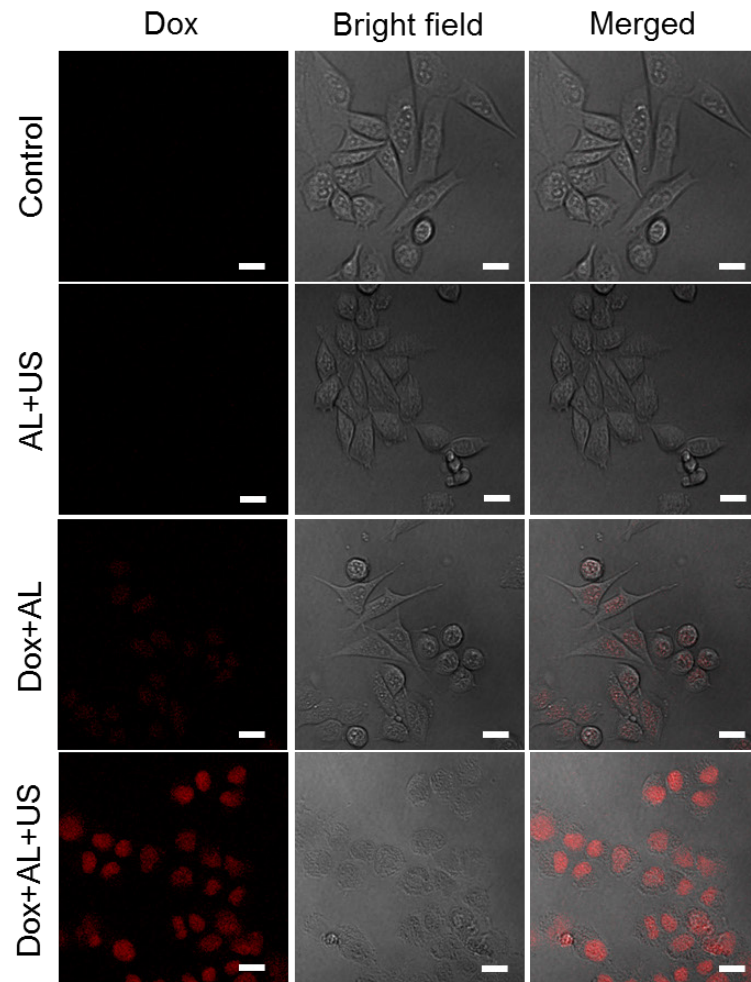
Representative confocal images of LM8 cells (A) and MBT-2 cells (B) 1 h after sonication. In both cell lines, a weak Dox fluorescence signal was detected in the Dox+AL group, but a notably stronger signal was evident in the Dox+AL+US group, with the Dox fluorescence localized to the nuclei of the cells. No fluorescence was detected in the control and AL+US groups. Scale bars represent 20  $\mu\text{m}$ .

Supplementary Video SV1.

Representative movie showing high-frequency US imaging of ALs flowing in the PALN. The ALs entered the marginal sinus from the afferent LVs, and then flowed into the lymphatic sinus. The B-mode images were acquired using a 25-MHz mechanical transducer (axial resolution, 70  $\mu\text{m}$ ) and a 15-Hz frame rate.

# Supplementary figure S1

(A)



(B)

