

Supplementary Data

Table S1. Chi square test of different HOXA5 expression location in non-small cell lung cancer tumor part

Cytoplasmic expression	Nuclear expression		P value
	Negative	Positive	
Negative	15 (31.3%)	7 (14.6%)	0.002
Positive	26 (54.1%)	0 (0%)	

The above table was only performed in the tissue samples received from CTH of totally 48 cases.

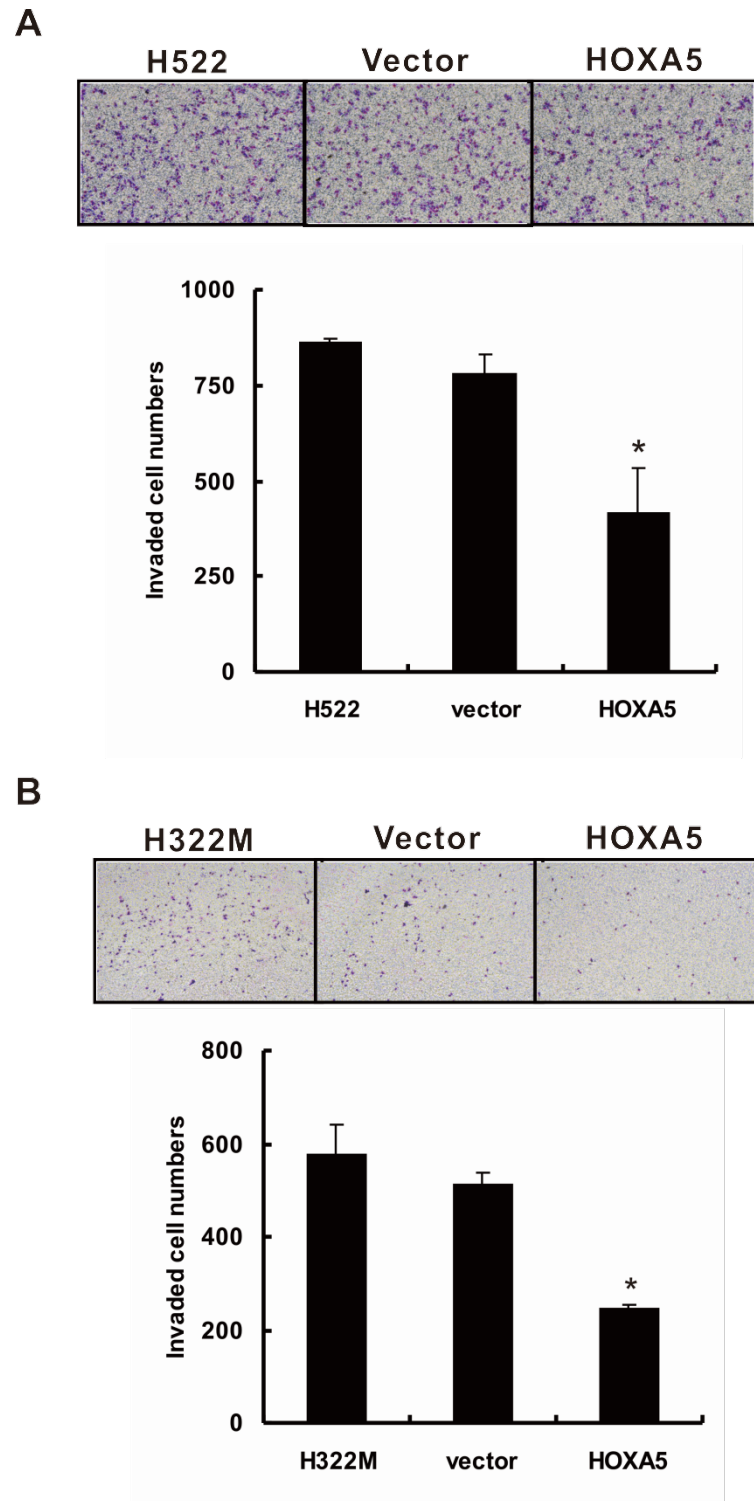


Figure S1. Overexpression of HOXA5 could reduce invasion abilities in H522 and H322M cells. (A) H522 (p53 P191 frameshift) (B) H322M (p53 R248L). Upper panel was representative images of invasion assay and lower panel was densitometry evaluation for invasive cells. Each experiment was performed in duplicate, mean \pm SD; *, $P < 0.05$ compared with vector control.