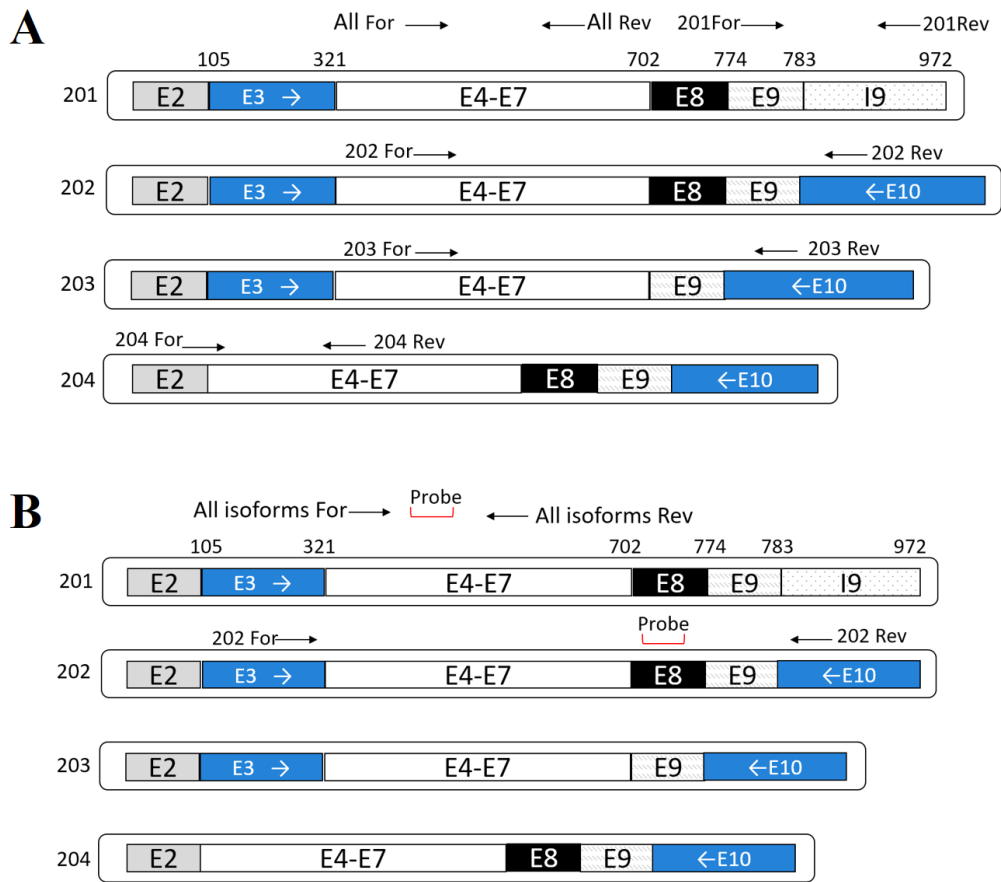
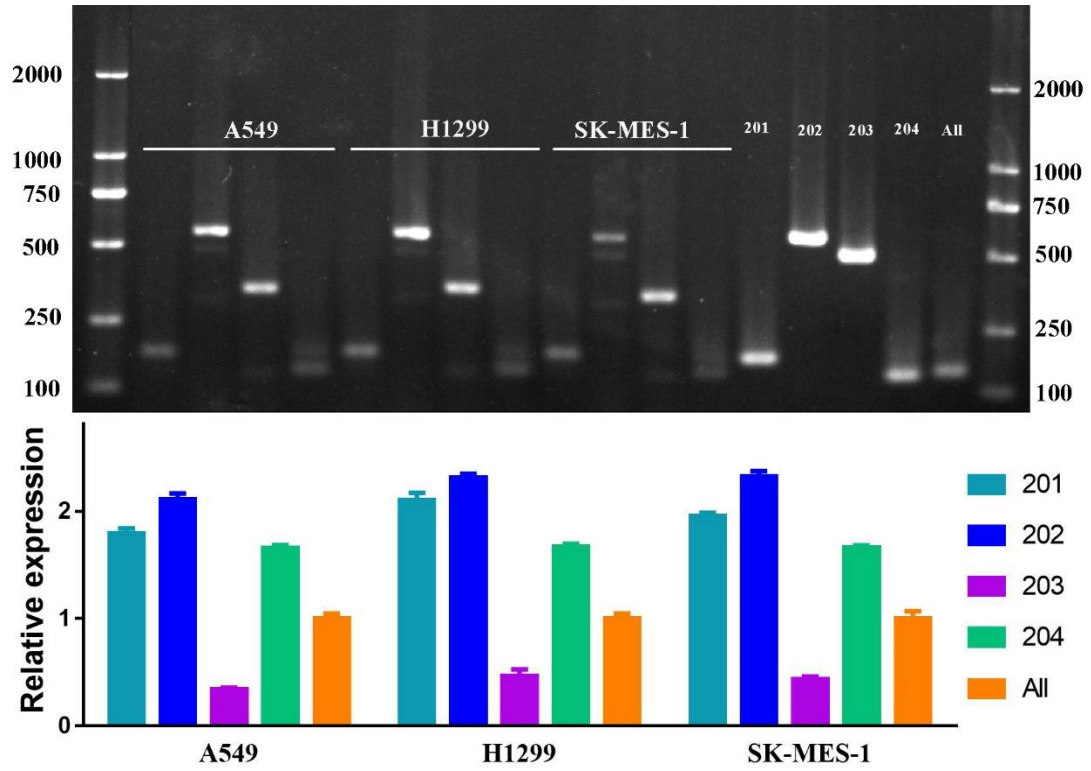


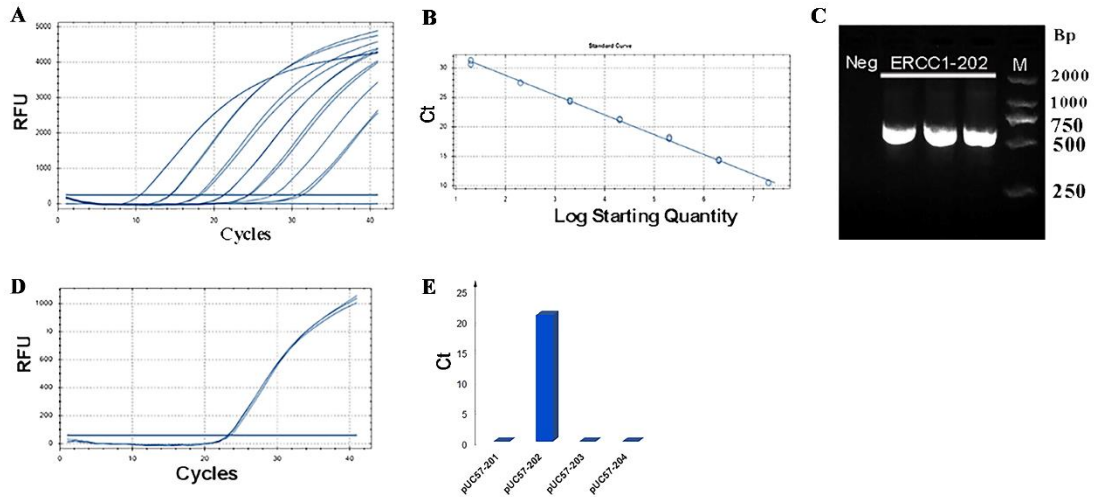
Supplementary Files



Supplementary Fig. 1. Primers for PCR(A) and real-time PCR (B).



Supplementary Fig. 2. Expression of ERCC1 isoforms at the mRNA level in human lung cancer cell lines. The data are presented as the fold-change in gene expression normalized to the expression of ERCC1-all.



Supplementary Fig. 3. ERCC1 and ERCC1_202 mRNA expression was analyzed by qPCR. **A.** The amplification curve from the real-time PCR assay with the ERCC1_202 standard plasmid (pUC57-ERCC1_202). **B.** According to the regression curve from the real-time PCR assay, the amplification efficiency is 97.0%, and the correlation coefficient is 0.99. **C.** Agarose gel electrophoresis for the ERCC1_202 standard plasmid and the negative control. PCR products were 590 bp. **D.** The plasmids pUC57-ERCC1_201, pUC57-ERCC1_202, pUC57-ERCC1_203, and pUC57-ERCC1_204 were used as PCR templates (1.0×10^4 copies/ μ L), only when the pUC57-ERCC1_202 as the template was amplified. **E.** The Ct values of D.

Supplementary Table 1. Primers for all isoforms of ERCC1

Target		Sequence (5' to 3')	Position	Length of Product (bp)
201	For	CTGGAACAGCTCATCGCCGCATC	778-800	184
	Rev	AGCCACTGTGTCTGGTCTTTGGT	961-939	
202	For	CATCATTGTGAGCCCTCGGCAG	446-467	570
	Rev	TGCAGGACATCAAACAGCCTCCG	1015-993	
203	For	CATCATTGTGAGCCCTCGGCAG	446-467	498
	Rev	TGCAGGACATCAAACAGCCTCCG	943-921	
204	For	GGATGAGGTCCCTCCTGGAGTGA	84-106	140
	Rev	TGTGGTAGCGGAGGCTGAGGA	223-203	
All isoforms	For	TTGGCGACGTAATTCCCGACT	368-388	148
	Rev	TGGACAAGCAGGACCCGCAA	515-496	

Supplementary Table 2. Primers for ERCC1_202 and ERCC1 for real-time PCR

Target		Sequence (5' to 3')	Position	Length of Product (bp)
202	For	GGCAAAATCCAACAGCATCAT	285-305	590
	Rev	GCTCGTGCAGGACATCAAACA	874-854	
	Probe	FAM-CAAATGTGGTCAGGAGGGTCT-MGB	772-752	
All isoforms	For	TTGGCGACGTAATTCCCGACT	368-388	148
	Rev	TGGACAAGCAGGACCCGCAA	515-496	
	Probe	HEX-GTGCCCTGTTCTCAGCCTC-MGB	410-429	
β -Actin	For	ATCCTCACCTGAAGTACCC	274-293	96
	Rev	ACGCAGCTCATTGTAGAAGG	369-350	
	Probe	TET-CAGATTTTCTCCATGTCGTCCCA-MGB	341-319	

Supplementary Table 3. Correlation between ERCC1_202 and clinicopathological characteristics

Characteristic	Low ERCC1_202 N = 14 (%)	High ERCC1_202 N = 14 (%)	Total N = 28 (%)	<i>P</i>
Age (years)				0.712
≤60	6 (42.9)	5 (35.7)	11 (39.3)	
>60	8 (57.1)	9 (64.3)	17 (60.7)	
Sex				0.676
Male	11 (78.6)	10 (71.4)	21 (75.0)	
Female	3 (21.4)	4 (28.6)	7 (25.0)	
Histology				0.276
Adenocarcinoma	8 (57.1)	8 (57.1)	16 (57.1)	
Squamous cell carcinoma	6 (42.9)	6 (42.9)	12 (42.9)	
Smoking status				0.257
Never smoker	9 (64.3)	5 (35.7)	14 (50.0)	
Smoker	5 (35.7)	9 (64.3)	14 (50.0)	
Performance status				0.648
0	12 (85.7)	10 (71.4)	22 (78.6)	
1-2	2 (14.3)	4 (28.6)	6 (21.4)	
TNM stage				0.018
III	12 (85.7)	5 (35.7)	17 (60.7)	
IV	2 (14.3)	9 (64.3)	11 (39.3)	