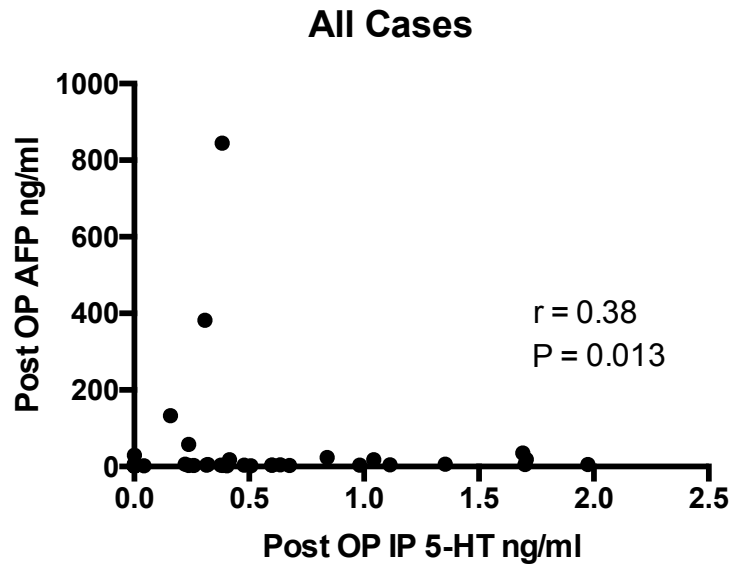
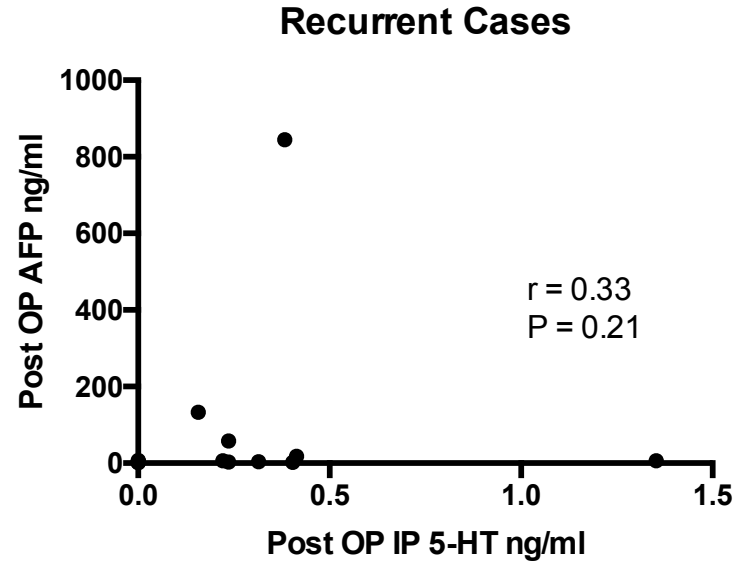


## **Supplementary Information**

(A)



(B)

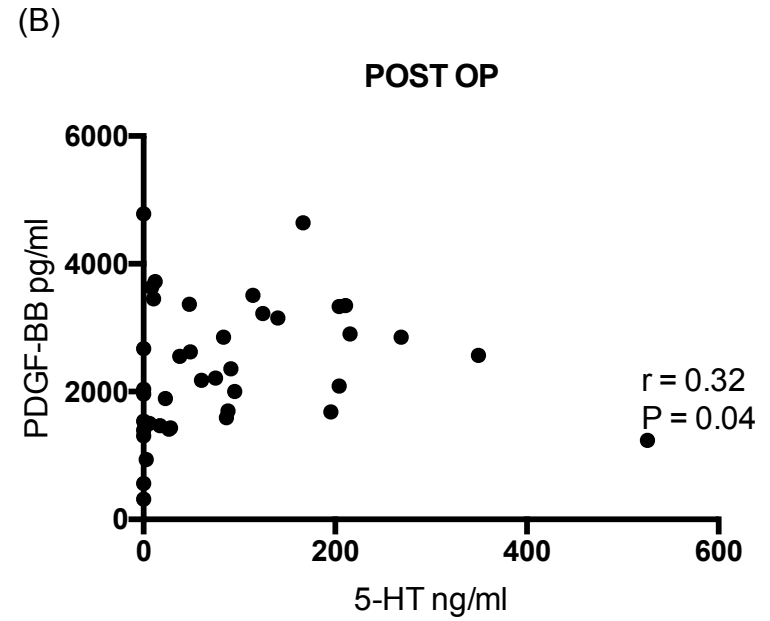
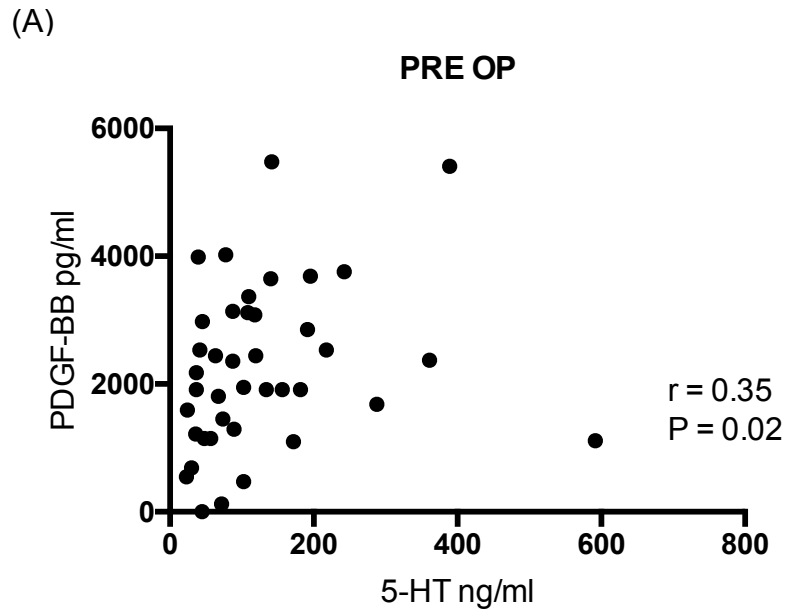


**Figure S1.** Correlation between postoperative serum AFP and IP-HT concentrations : All cases (A) and Recurrent cases (B)

**Supplementary Table 1. Platelet Alpha Granule's Cytokines Concentrations on the Basis of Recurrence**

Cytokine Concentrations	Recurrent Cases	Non-Recurrent Cases	<i>P</i> - Value
<b>POST OP Serum PDGF-BB</b> , ng/ml Median (Min., Max.) (N = 40)	1,539 (315, 2,674) (n = 15)	2,852 (564, 4,785) (n = 25)	0.003
<b>POST OP Serum Ang-1</b> , pg/ml Median (Min., Max.) (N = 37)	22,025 (50,125, 10,572) (n = 15)	25,980 (1,717, 46,465) (n = 22)	0.150
<b>POST OP Serum EGF</b> , pg/ml Median (Min., Max.) (N = 37)	262.8 (66, 825) (n = 15)	331 (0, 683) (n = 22)	0.570

Min.: Minimum, Max.: Maximum, PRE OP: Preoperative, POST OP: Postoperative, PDGF-BB: Platelet Derived Growth Factor-BB, Ang-1: Angiopoetin-1, EGF: Epidermal Growth Factor



**Figure S2.** Correlation between serum PDGF-BB and 5-HT concentrations: Preoperative (A) and Postoperative (B)