

Supplement Table 1. Baseline clinicopathological factors of 347 patients included

Parameters		p ^b
Age (years), mean \pm SD	57.96 \pm 13.79	
Gender		0.2877
Male	181 (52.2%)	
Female	166 (47.8%)	
Tumor size (cm), mean \pm SD	4.38 \pm 3.61	
Tumor (T) stage		< 0.0001
T1	109 (31.41%)	
T2	51 (14.70%)	
T3	155 (44.67%)	
T4	32 (9.22%)	
Lymph node (N) stage		< 0.0001
N0	172 (49.57%)	
N1	96 (27.67%)	
N2	67 (19.31%)	
N3	12 (3.46%)	
Metastasis (M) stage		< 0.0001
M0	341 (98.27%)	
M1	6 (1.73%)	
Lymphatic invasion ^a		0.0175
No	175/319 (54.86%)	
Yes	144/319 (45.14%)	
Vascular invasion ^a		< 0.0001
No	282/319 (88.40%)	

Yes	37/319 (11.60%)	
Perineural invasion ^a		0.8743
No	158/319 (49.53%)	
Yes	161/319 (50.47%)	
<i>GALNT14-rs9679162</i> genotype		< 0.0001
“TT”	81 (23.34%)	
“TG”	207 (59.65%)	
“GG”	59 (17.00%)	
TNM Stage (AJCC 7 th)		< 0.0001
IA	100 (28.82%)	
IB	37 (10.66%)	
IIA	51 (14.70%)	
IIB	67 (19.31%)	
IIIA	56 (16.14%)	
IIIB	22 (6.34%)	
IIIC	8 (2.31%)	
IV	6 (1.73%)	
Location of cancer		< 0.0001
Lesser curvature	106/415 (25.54%)	
Prepyloric	237/415 (57.11%)	
Proximal cardioesophageal	51/415 (12.29%)	
Diffuse	18/415 (4.34%)	
unknown	3/415 (0.72%)	

Overall Survival Rate

One-year	77.81%
Two-year	66.28%
Three-year	58.21%
Five-year	48.13%
Ten-year	30.26%
Follow-up (months), median, range	32.83 (0.4, 254)

^aMissing data; data available in 319 patients

^bComparisons between subgroups

Supplement Table 2. Baseline Clinicopathological factors of 159 patients in group-3 (advanced SRCC patients).

Parameters		p ^b
Age (years), mean \pm SD	59.05 \pm 14.13	
Gender		0.2620
Male	85 (53.46%)	
Female	74 (46.54%)	
Tumor size (cm), mean \pm SD	4.38 \pm 3.61	
Tumor (T) stage		< 0.0001
T1	0 (0%)	
T2	7 (4.40%)	
T3	120 (46.54%)	
T4	32 (20.13%)	
Lymph node (N) stage		< 0.0001
N0	8 (5.03%)	
N1	74 (46.54%)	
N2	65 (40.88%)	
N3	12 (7.55%)	
Metastasis (M) stage		< 0.0001
M0	151/157 (96.18%)	
M1	6/157 (3.82%)	
Lymphatic invasion ^a		< 0.0001
No	33/154 (21.43%)	
Yes	121/154 (78.57%)	
Vascular invasion ^a		< 0.0001

No	122/154 (79.22%)	
Yes	32/154 (20.78%)	
Perineural invasion ^a		< 0.0001
No	33/154 (21.43%)	
Yes	121/154 (78.57%)	
GALNT14-rs9679162 genotype		< 0.0001
“TT”	39 (24.53%)	
“TG”	91 (57.23%)	
“GG”	29 (18.24 %)	
Tumor Stage (AJCC 7 th)		< 0.0001
IIB	67 (42.14%)	
IIIA	56 (35.22%)	
IIIB	22 (13.84%)	
IIIC	8 (5.03%)	
IV	6 (3.77%)	
Location of cancer		< 0.0001
Lesser curvature	51/269 (18.96%)	
Prepyloric	156/269 (57.99%)	
Proximal cardioesophageal	44/269 (16.36%)	
Diffuse	16/269 (5.95%)	
unknown	2/269 (0.74%)	
Overall survival rate		
One-year	61.64%	
Two-year	42.14%	

Three-year	33.33%
Five-year	23.27%
Ten-year	10.69%
Follow-up (months), median, range	19.07 (0.4, 205.3)

^aMissing data; data available in 154 patients

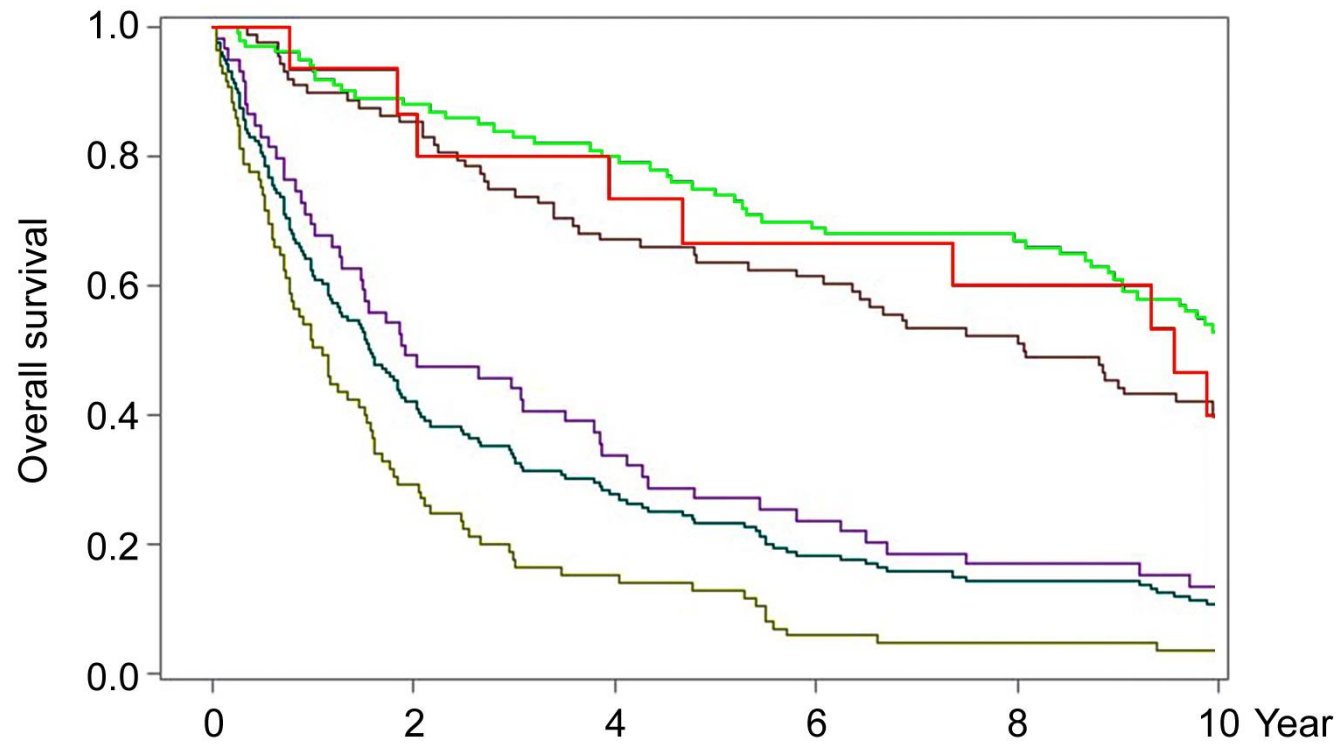
^bComparisons between subgroups

Supplement Table 3. Cox proportional hazard analysis for TTP in relation to clinical parameters in group-3 patients

Variables	Cox proportional hazard analysis							
	Univariate			Multivariate				
	HR	95% CI		P	HR	95% CI		P
Size	1.056	1.024	1.090	0.0005	1.056	1.021	1.093	0.0017
Age	1.021	1.009	1.034	0.0007				
Sex	1.200	0.877	1.642	0.2552				
T status	1.226	0.877	1.714	0.0001				
N status	1.418	1.122	1.793	0.0035	1.661	1.29	2.14	<0.0001
M status	3.711	1.608	8.566	0.0021	4.522	1.765	11.582	0.0017
Lymphatic invasion	1.587	1.071	2.350	0.0212				
Vascular invasion	1.449	0.977	2.150	0.0655				
Perineural invasion	1.573	1.065	2.325	0.0229	1.5	0.984	2.287	0.0596
<i>GALNT14</i> genotype ^a	1.549	1.074	2.236	0.0193	1.489	0.966	2.294	0.0710

HR, hazard ratio; CI, confidence interval; ^a*GALNT14-rs9679162* genotype: divided into “TT” versus “non-TT”; “TT” = 1.

Supplement Figure 1. The plot overlaying the subgroups of group-3 with different risk scores and the TNM stage IA (group-1) and IB/IIA (group-2) curves. Group-3: score = 1, red line; score = 2, purple line; score = 3, brown-green line; TNM stage: IA, light green line; IB/IIA, brown line; All other stages combined (Group-3 total), dark green line.



Supplement Figure 2. The disease-free survival of all patients (A) and Group-3 patients (B) could be divided into 3 prognostic subgroups: score = 0/1, blue; score = 2/3, red; and score > 3, green

