

Supplementary table 1. Clinical characteristics of patients prior to the second TACE session

Variables	Short interval		Long interval		p
	(n = 238)		(n = 238)		
WBC, 10E9/L	6.32 ± 1.98		6.26 ± 2.12		0.525
RBC, 10E9/L	6.27 ± 31.56		4.28 ± 0.72		0.265
HB, g/L	125.63 ± 19.22		125.40 ± 20.82		0.620
PLT, 10E9/L	201.52 ± 113.94		186.89 ± 93.41		0.109
ALT, U/L	50.03 ± 34.74		54.18 ± 68.58		0.205
AST, U/L	77.72 ± 65.16		71.27 ± 65.95		0.065
GGT, U/L	201.47 ± 144.17		190.21 ± 178.48		0.024
ALB, g/L	37.38 ± 4.34		38.82 ± 5.78		0.013
TBIL, µmol/L	15.08 ± 12.06		15.38 ± 10.17		0.398
Creatine, µmol/L	70.19 ± 16.71		69.19 ± 14.29		0.751
PT, sec	12.58 ± 1.72		12.26 ± 1.53		0.114
INR	1.09 ± 0.16		1.24 ± 1.74		0.247
Child-Pugh score	5.39 ± 0.672		5.31 ± 0.554		0.171
ABIL grade	1	85 (35.71%)	108 (45.38%)		0.027
	2	149 (62.60%)	128 (53.78%)		
	3	4 (1.68%)	2 (0.84%)		

Values are presented as the median ± χ and n (%)

Abbreviations: WBC, white blood cell; RBC, red blood cell; HB, hemoglobin; PLT, platelet; ALT, alanine transaminase; AST, aspartate aminotransferase; GGT, gamma-glutamyl transpeptidase; ALB, albumin; TBIL, total bilirubin; PT, prothrombin time; INR, international normalized ratio; TACE, transcatheter arterial chemoembolization; ABIL, Albumin-Bilirubin.

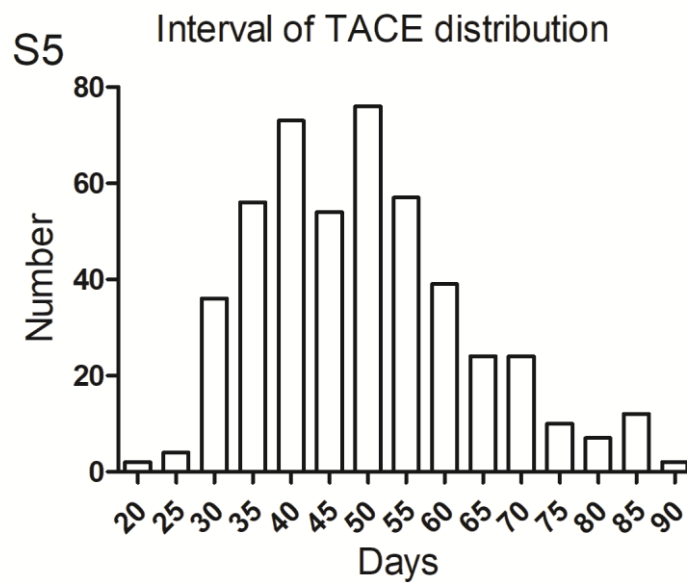
Supplementary table 2. Radiological responses according to mRECIST Criteria after first and second session TACE

	Group	CR	PR	SD	PD	p-value
TACE-1	LIG	12 (5.04%)	120 (50.42%)	85 (35.71%)	21 (8.82%)	0.547
	SIG	18 (7.56%)	120 (50.42%)	79 (33.19%)	21 (8.82%)	
TACE-2	LIG	19 (7.98%)	142 (59.66%)	24 (10.08%)	53 (22.27%)	0.158
	SIG	24 (10.08%)	133 (55.88%)	40 (16.81%)	41 (17.23%)	

TACE-1 or TACE-2, first or second session transarterial chemoembolization; mRECIST: The modified response evaluation criteria in solid tumors criterion; LIG = Long-interval group, SIG = Short-interval group, each group included 238 patients.

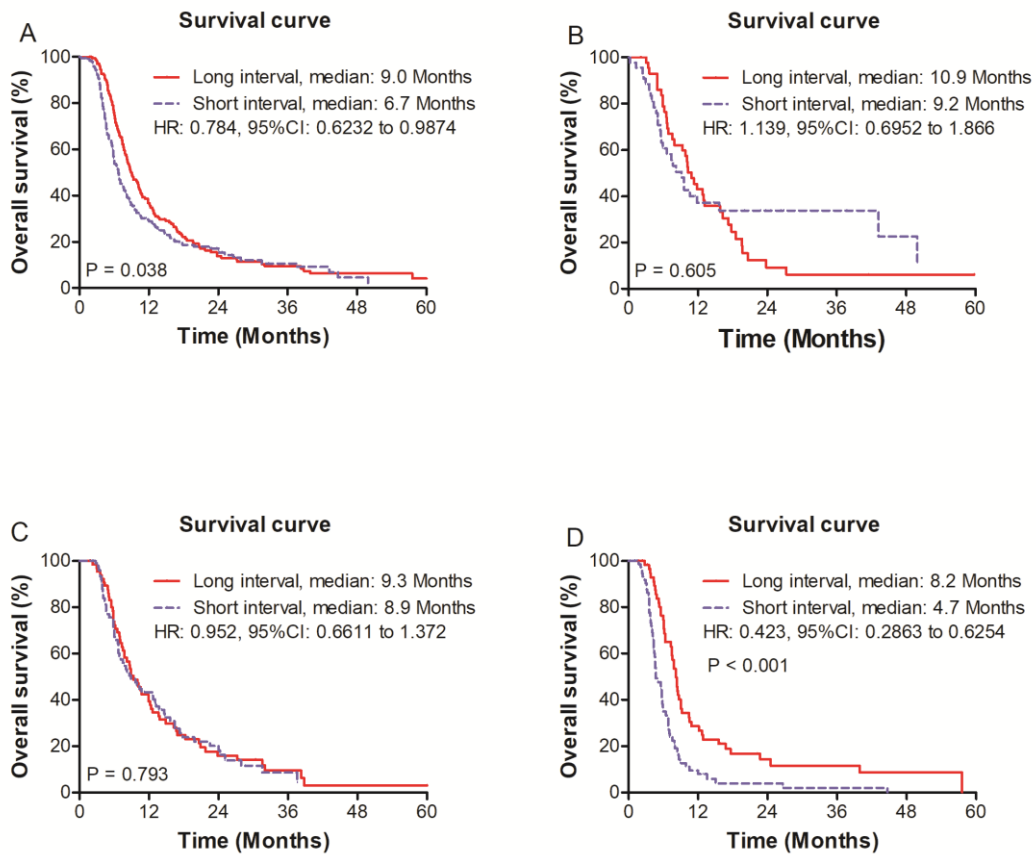
CR, complete response; PR, partial response; SD, stable disease; PD, progressive disease

Supplement material

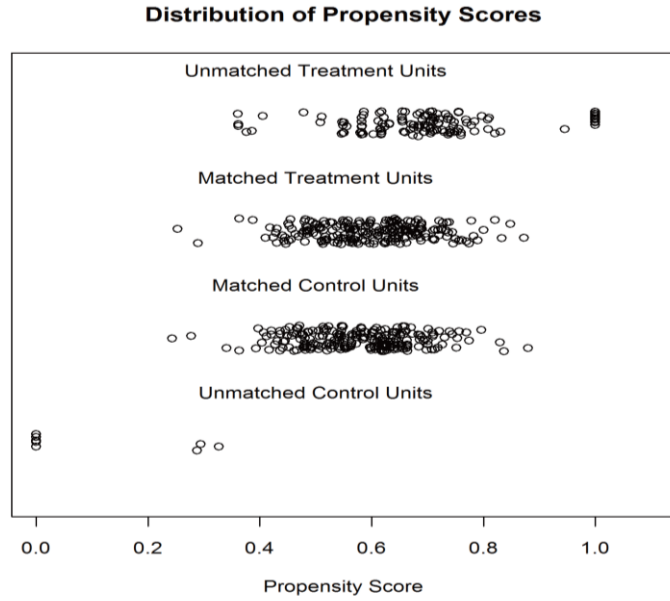


Supplementary Figure 1. Histograms of the distribution of interval between the first two TACE sessions.

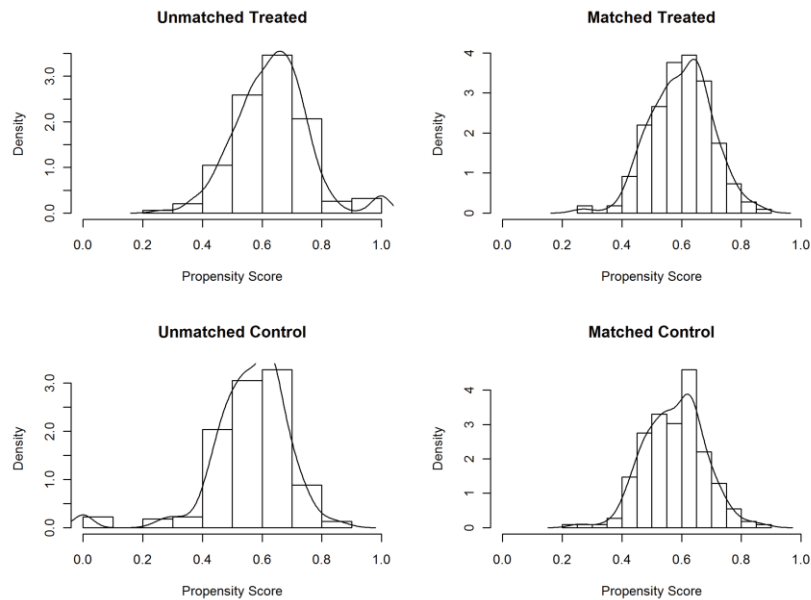
Supplementary Figure 2



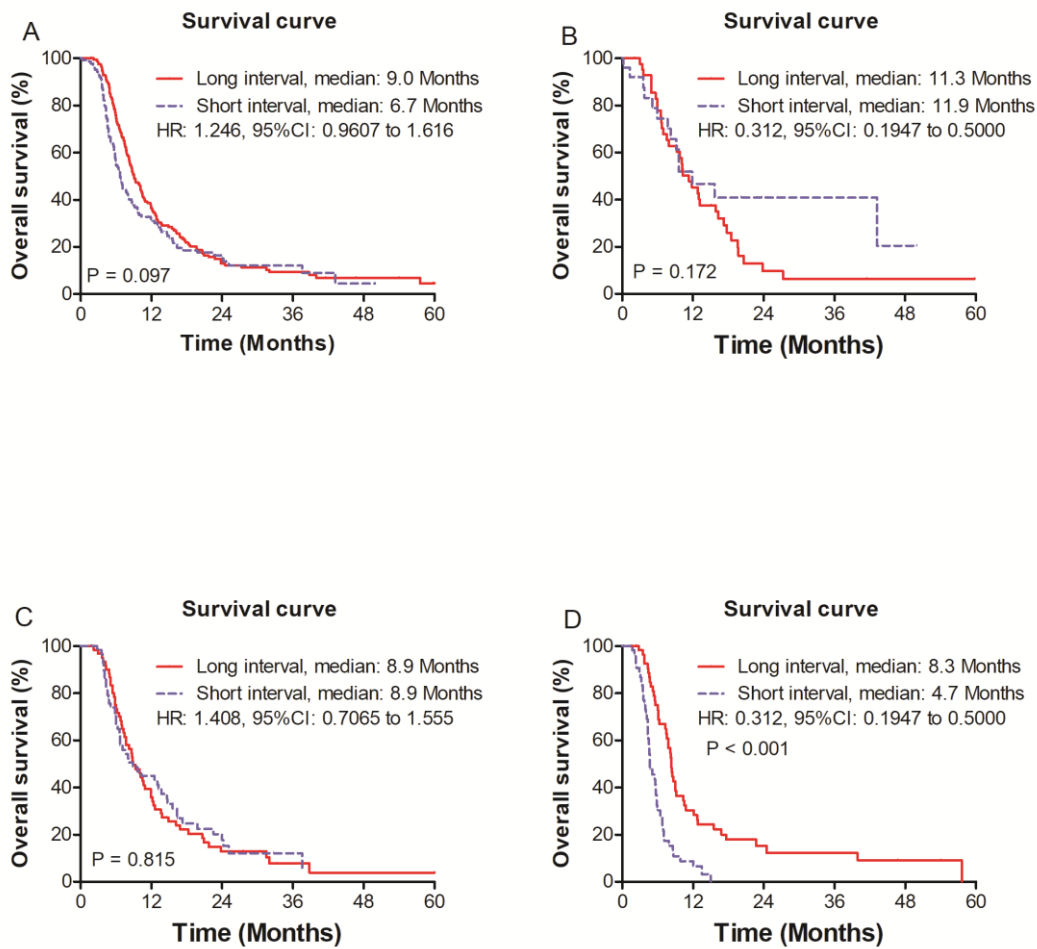
Supplementary Figure 2. Kaplan-Meier survival curves of Long- and short-interval in the patients treated with only two sessions of TACE: (A) Overall survival for Long- and short-interval in the patients treated with only two sessions of TACE, (B-D) for BCLC-A, -B and -C stage in the patients treated with only two sessions TACE.



Supplementary Figure 3. Jitter plots of the propensity score for patients after resection and ablation in either matched or unmatched groups.



Supplementary Figure 4. Histograms of the propensity score in the original short interval group and long interval group patients and histograms of the propensity score in the matched patients.



Supplementary Figure 5. Kaplan-Meier survival curves of Long- and short-interval in matched patients and treated with only two sessions of TACE: (A) Overall survival for Long- and short-interval in matched patients and treated with only two sessions of TACE, (B-D) for BCLC-A, -B and -C stage in matched patients and treated with only two sessions TACE.