

## Supplementary figures and tables

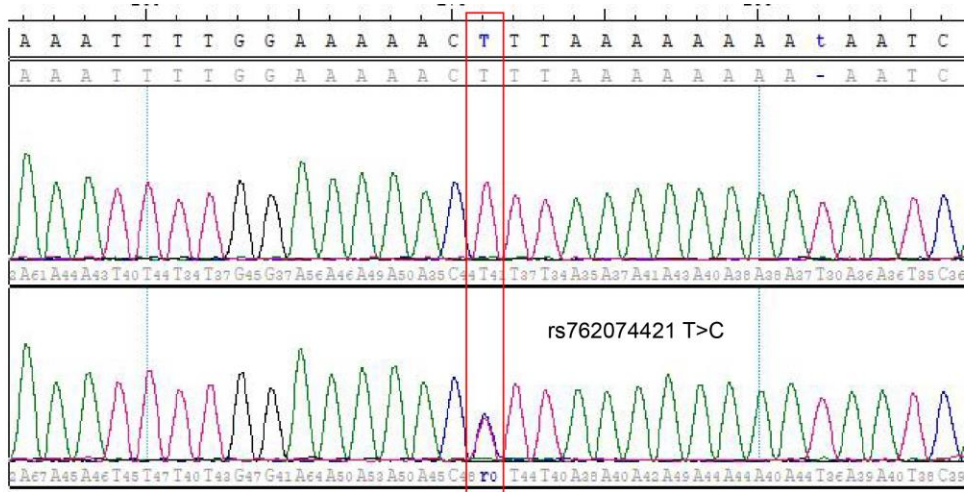
**Table S1. Oligonucleotide primers used for sequencing**

Amplification region	Forward primers (5')	Reverse primers (3')
<i>LRP1B</i> -e26	TGCAGAGCCAGTACAATGAAA	TGAAAGCAACCACTTTCTCCT
<i>LRP1B</i> -e27	TGTTACTGCATTGTTTCCATCA	TCAGTCTGCTCTGTGCAATTT
<i>LRP1B</i> -e28	AGGATGCATGCCATTTGTCT	GTCAGTCTTCCCCAGAGCAG

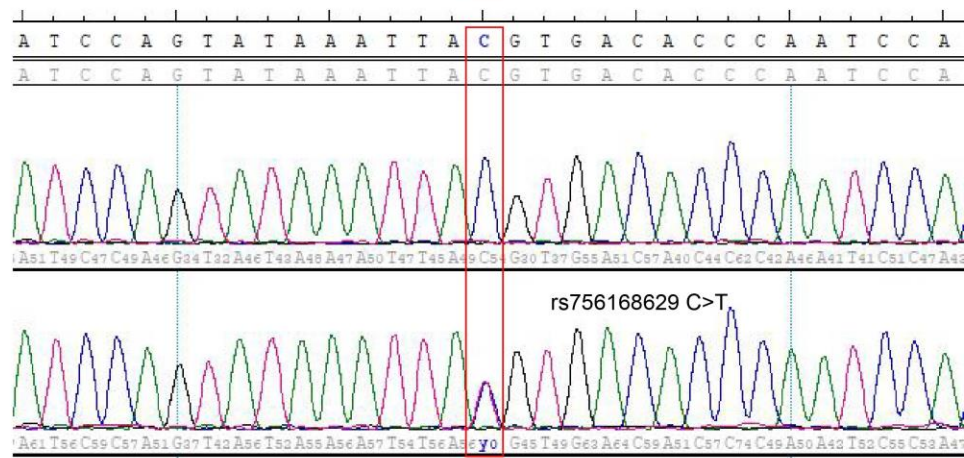
Notes: e stands for exon.

**Figure S1. Sequence chromatograms showing the *LRP1B* mutations found in MM patients (single peak, homozygote; double peak, heterozygote).** (A) rs762074421 (T>C) of Exon 26 in the *LRP1B* gene found in 1/178 MM patient and a normal control. (B) rs756168629 (C>T) of Exon 26 in the *LRP1B* gene found in 1/178 MM patient and a normal control. (C) rs113600691 (A>G) of Exon 28 in the *LRP1B* gene found in 4/178 MM patients and a normal control. The mutation is bordered by a red rectangle.

A



B



C

