

EMP2 acts as a suppressor of melanoma and negatively regulated by mTOR-mediated autophagy

Manyi Wang^{1,‡}, Sijia Li^{1,‡}, Peng Zhang^{2,}, Yujia Wang³, Chunting Wang³, Ding Bai^{1,*}*

Xian Jiang^{3,}*

¹ State Key Laboratory of Oral Diseases, National Clinical Research Center for Oral Disease, Department of Orthodontics and Paediatrics, West China Hospital of Stomatology, Sichuan University, Chengdu, 610041, PR China

² Department of Radiation Oncology, Sichuan Cancer Hospital & Institute, Sichuan Cancer Center, School of Medicine, University of Electronic Science and Technology of China, Radiation Oncology Key Laboratory of Sichuan Province, Chengdu 610041, PR China

³ Department of Dermatology and State Key Laboratory of Biotherapy, West China Hospital, West China Medical School, Sichuan University, Chengdu 610041, PR China

‡ These authors contributed equally.

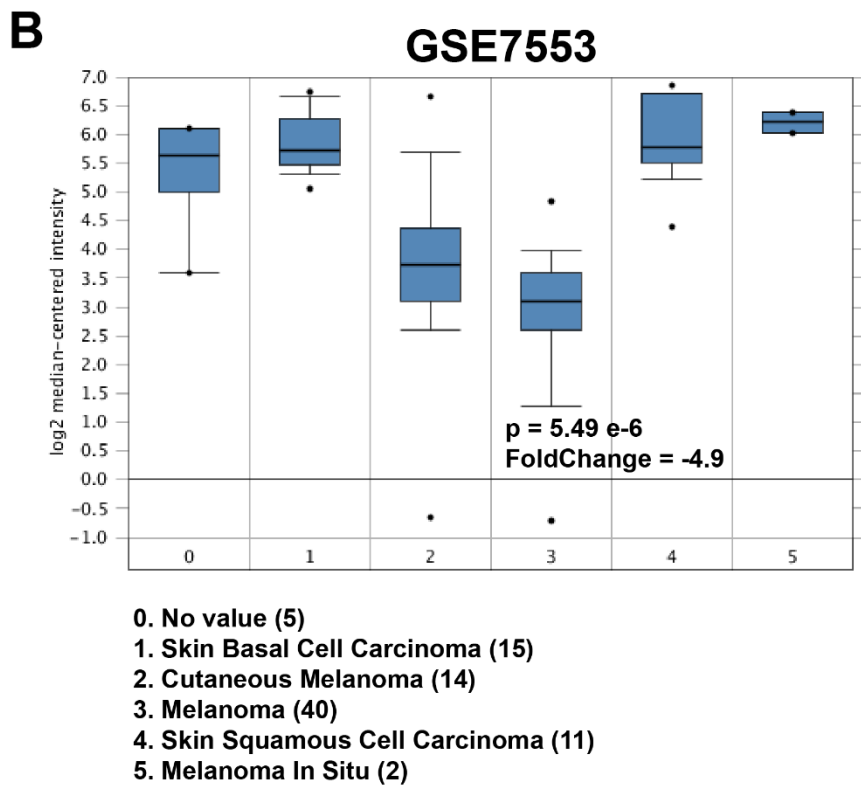
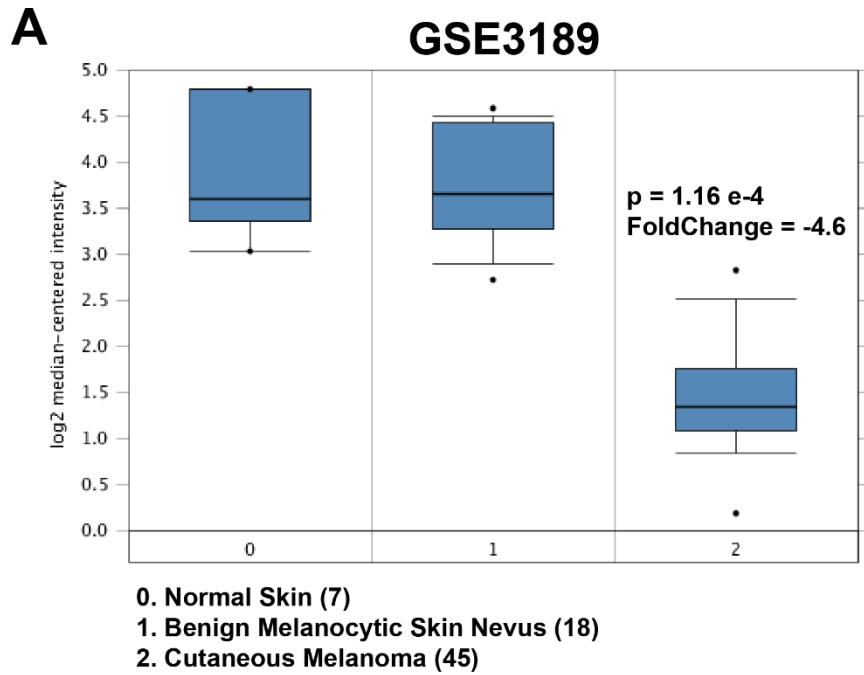


Figure S1. Expression of EMP2 was obviously down-regulated in melanoma tissues (Tumor) compared with normal human dematiictissue samples (Normal) in the GSE3189 datasets (A) and GSE7553 datasets (B).