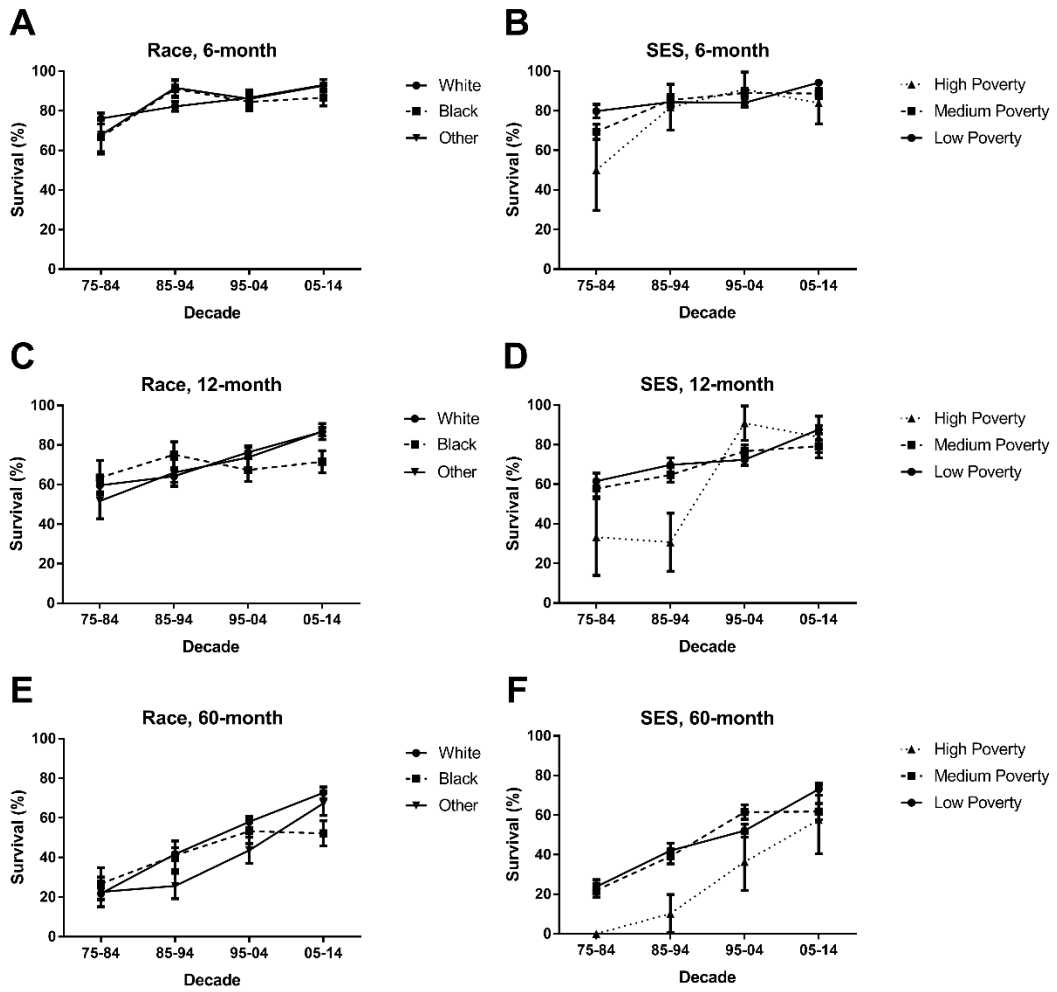


Supplementary figure 1.



Supplementary Table 1. Summary for incidence data in the SEER 9 registry sites in each decade by age of diagnosis, race, SES and sex.

Variables	Incidence per 1,000,000 by calendar period			
	1975-1984	1985-1994	1995-2004	2005-2014
Total	5.766	6.615	7.478	7.607
0-4	7.279	9.16	11.471	11.9
5-9	3.819	5.253	4.531	4.142
10-14	6.269	5.558	6.625	6.984
White	5.616	6.206	7.169	6.986
Black	5.102	6.332	7.688	8.373
Other	8.458	9.639	8.884	9.393
Low Poverty	5.383	6.000	7.42	7.595
Medium Poverty	6.375	7.365	7.577	7.65
High Poverty	4.017	6.494	6.518	7.492
Male	5.598	6.586	8.297	7.762
Female	5.943	6.645	6.619	7.444