

### **Legend of supplementary figures**

**Figure S1: Correlation between SLFN11 gene expression and methylation of 19 CpGs in TCGA database.** In total, 19 CpGs were analyzed for SLFN11 gene methylation by Illumina Infinium HM450K assay. The expression of SLFN11 was inversely associated with the methylation status of 16 CpGs, and the expression of SLFN11 was associated with the methylation status of one CpG site (cg18124488) positively.  $\beta$  values of two CpGs (cg01723139 and cg22282280) in all GC samples were 0 (dots in red).

**Figure S2: The effect of SLFN11 on morphology of GC cells.** No obvious morphological changes were found before and after re-expression of SLFN11 in SNU16 and MGC803 cells, as well as in NUGC3 cells before and after knockdown of SLFN11 (48 hours). (Right) Western blot showing SLFN11 expression after transfection of SLFN11 plasmid vector or SLFN11 targeting siRNA. Magnification:  $\times 200$ .

Figure S1

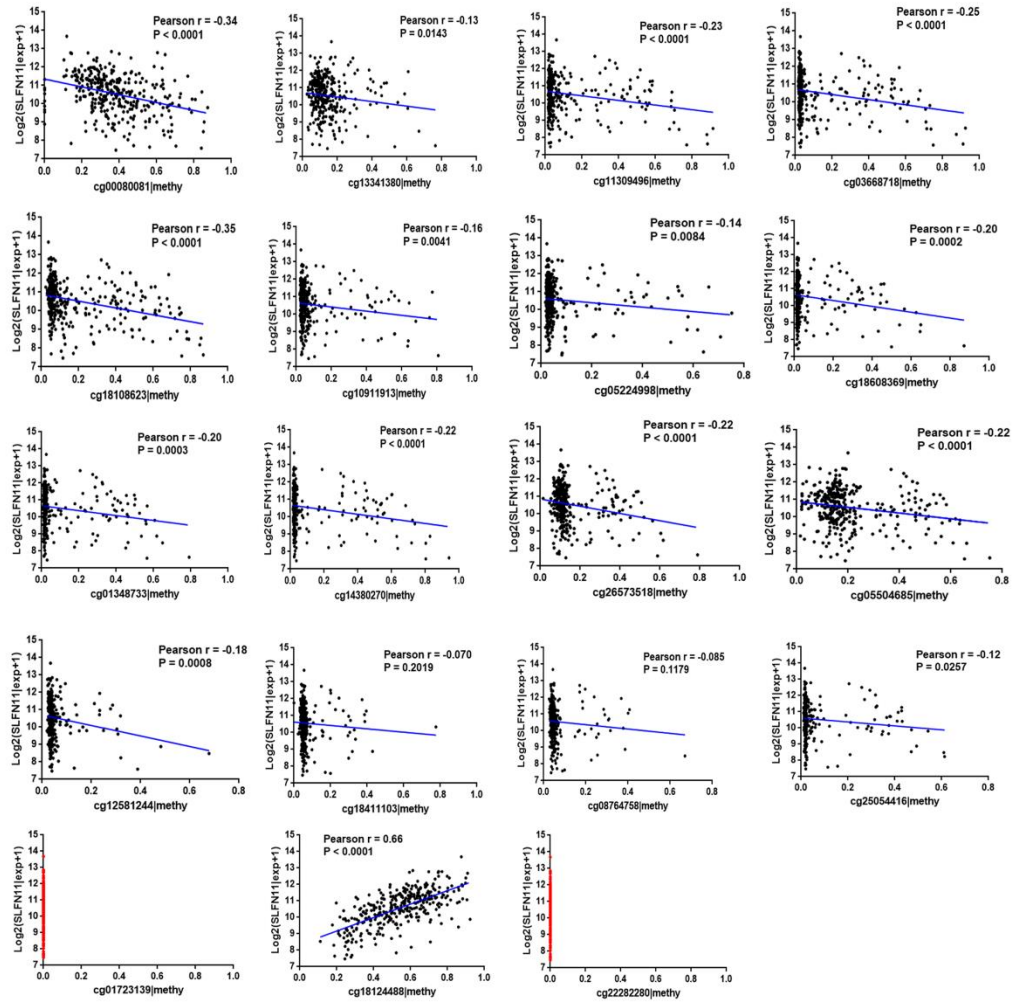


Figure S2

