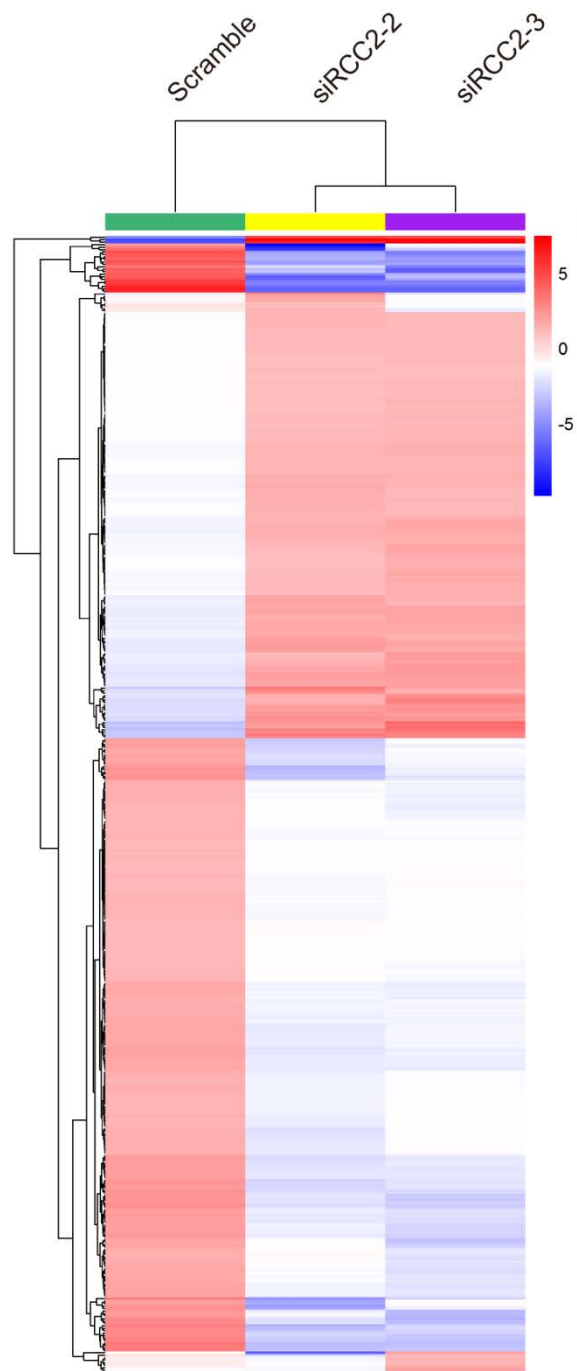


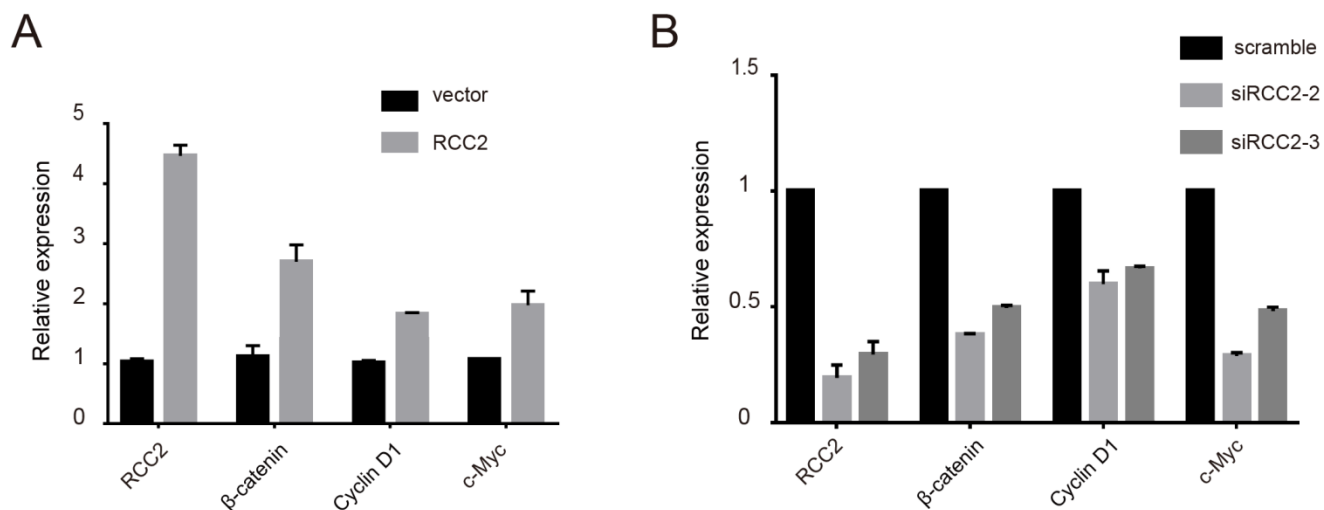
## Supplemental figures and tables

Analysis Type by Cancer	Cancer vs. Normal	
Bladder Cancer		
Brain and CNS Cancer		
Breast Cancer	4	1
Cervical Cancer	2	
Colorectal Cancer	2	
Esophageal Cancer		
Gastric Cancer	2	
Head and Neck Cancer	1	
Kidney Cancer		
Leukemia		
Liver Cancer	1	
Lung Cancer	1	
Lymphoma	3	
Melanoma		
Myeloma		
Other Cancer	6	
Ovarian Cancer	2	
Pancreatic Cancer		
Prostate Cancer		
Sarcoma		
Significant Unique Analyses	24	1
Total Unique Analyses	342	

**Figure S1 Gene Summary analyses of RCC2 in OncoPrint database.** A comparison of RCC2 expression levels between cancer and normal tissues showed that RCC2 was highly expressed in breast cancer, cervical cancer, colorectal cancer, gastric cancer, ovarian cancer and so on.



**Figure S2 Heatmap of the RNA-seq results following RCC2 silencing.**



**Figure S3** Real-time PCR analysis showing expression level of Wnt signaling genes in MCF7 cells with RCC2 overexpressed (A) or MDA-MB-231 cells with RCC2 silenced (B).

**Supplementary Table S1** Sequences of primers used for Real-time quantitative PCR (5'--3').

Genes	Forward	Reverse
RCC2	TTTTCTCAGAGCAGGTCGCC	TTCGGGGGTTGTATTCTGGC
$\beta$ -catenin	CTGAGGAGCAGCTTCAGTCC	CCATCAAATCAGCTTGAGTAGCC
Cyclin D1	ATCAAGTGTGACCCGGACTG	CTTGGGGTCCATGTTCTGCT
c-Myc	GGGTAGTGGAAAACCAGCCTC	AGAAATACGGCTGCACCGAG
GAPDH	GGTGGTCTCCTCTGACTTCAACA	GTTGCTGTAGCCAAATTCGTTGT