

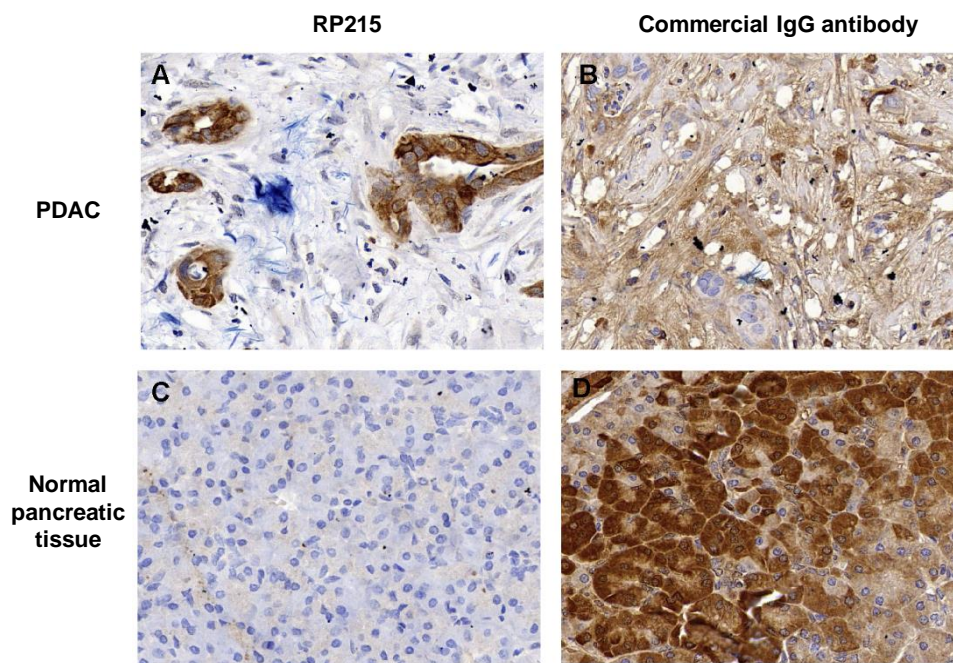
Supplemental data

Fig. S1. Compared with RP215, which specifically positively stains cancer cells (A, C), a commercial antihuman IgG antibody showed extensive positive staining of lymphocytes, mesenchymal cells, and cancer cells in PDAC tissue (B) and of normal pancreatic cells in normal pancreatic tissue (D).

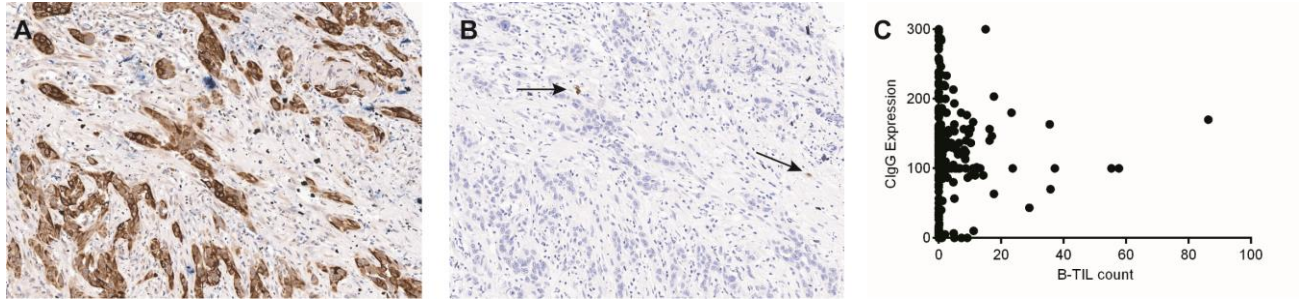


Fig. S2. Representative images of CIgG expression (A) and B-TILs (B) in a PDAC patient.

Original magnification, 100 \times . (C) No significant correlation was observed between CIgG expression and the B-TIL count in PDAC ($r_s=0.008$, $P=0.885$). Spearman's rank correlation coefficients were employed due to the skewed distribution of the B-TIL count.

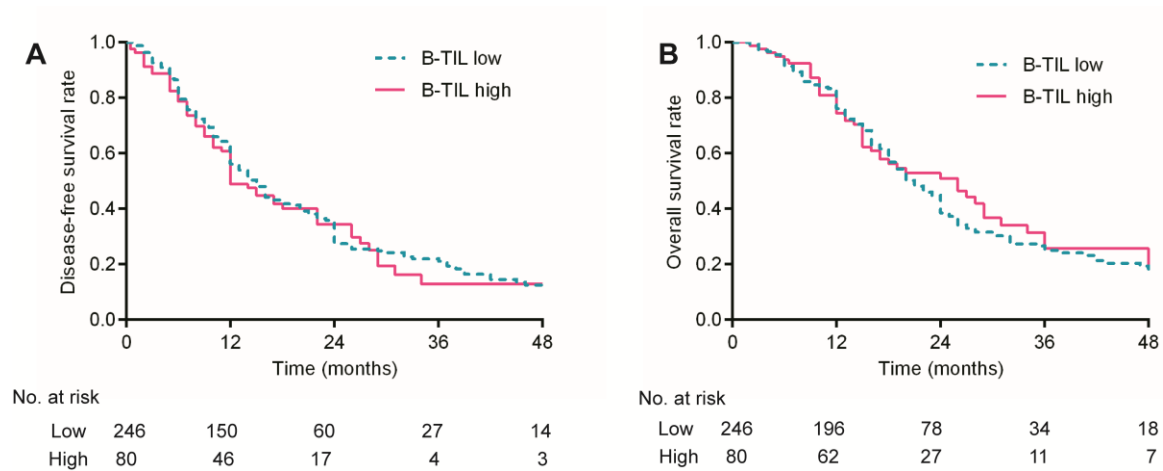


Fig. S3. Kaplan-Meier curves for disease-free survival (A) and overall survival (B) based on the B-TIL count in PDAC patients.

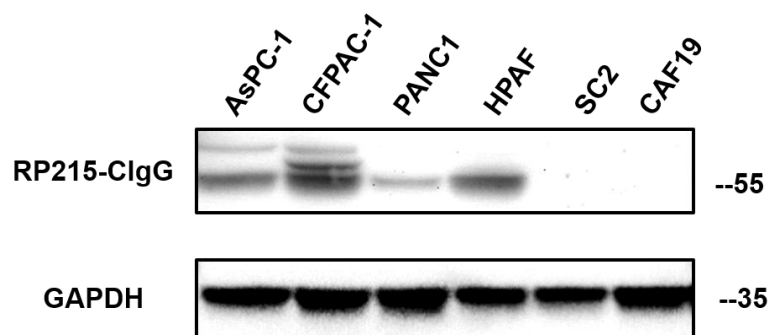


Fig. S4. CIgG expression in AsPC-1, CFPAC-1, PANC-1 and HPAF PDAC cell lines as well as fibroblast cell lines (SC2 and CAF19).