

Figure S1. Blockage of A2AR with DZD2269 inhibited CREB phosphorylation in mouse blood cells. (A-D) Flow cytometry histogram/plots images.

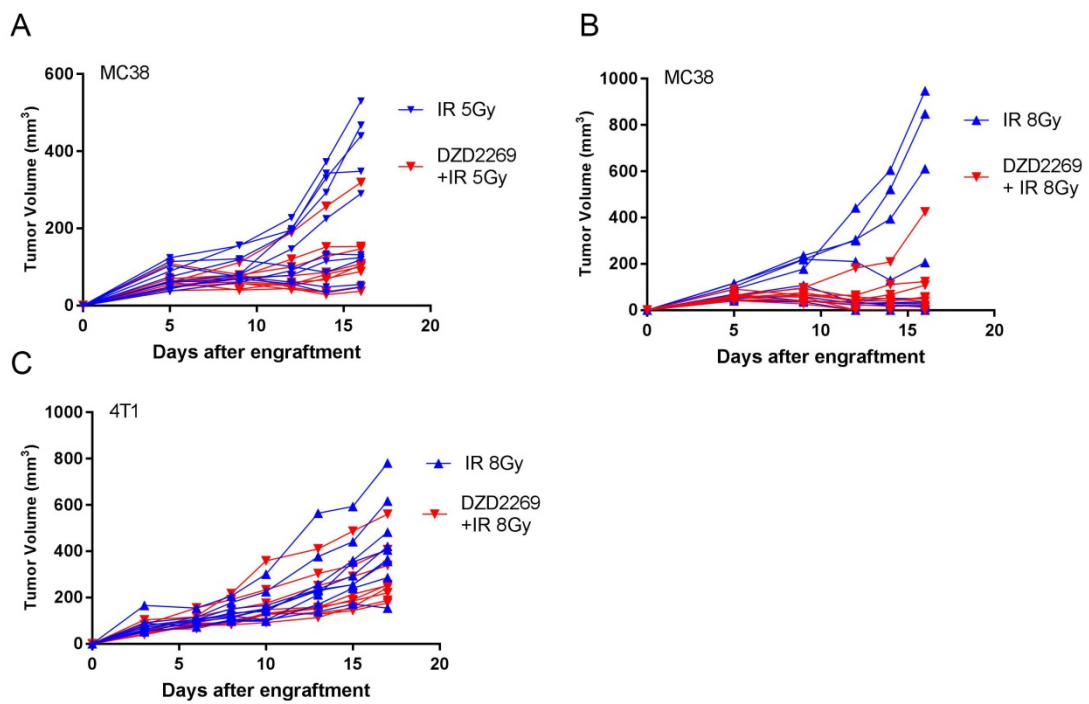
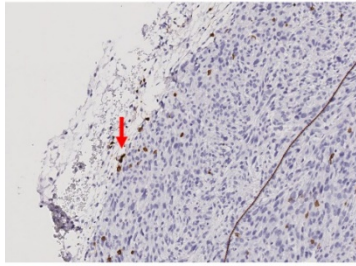


Figure S2. Spider plots of individual MC38 (A-B) and 4T1 (C) tumor bearing mice treated with irradiation only or combination therapy with DZD2269 (3 mg/kg).

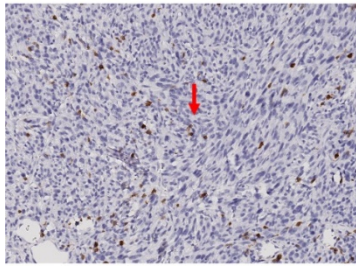
CD8+ Cells



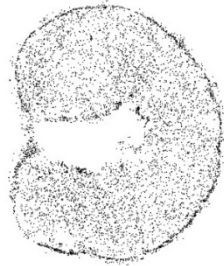
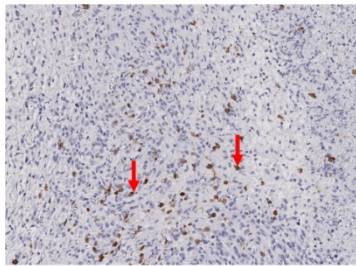
Sketch map



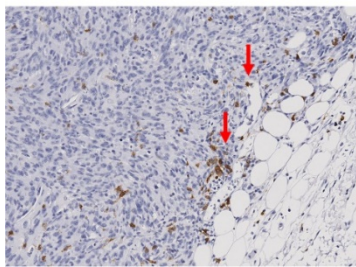
Vehicle



DZD2269



IR



DZD2269
+IR

Figure S3. Immunohistochemistry (20×) and sketch map of CD8+ tumor infiltrating lymphocyte of MC38 tumor after combined treatment of DZD2269 and IR.

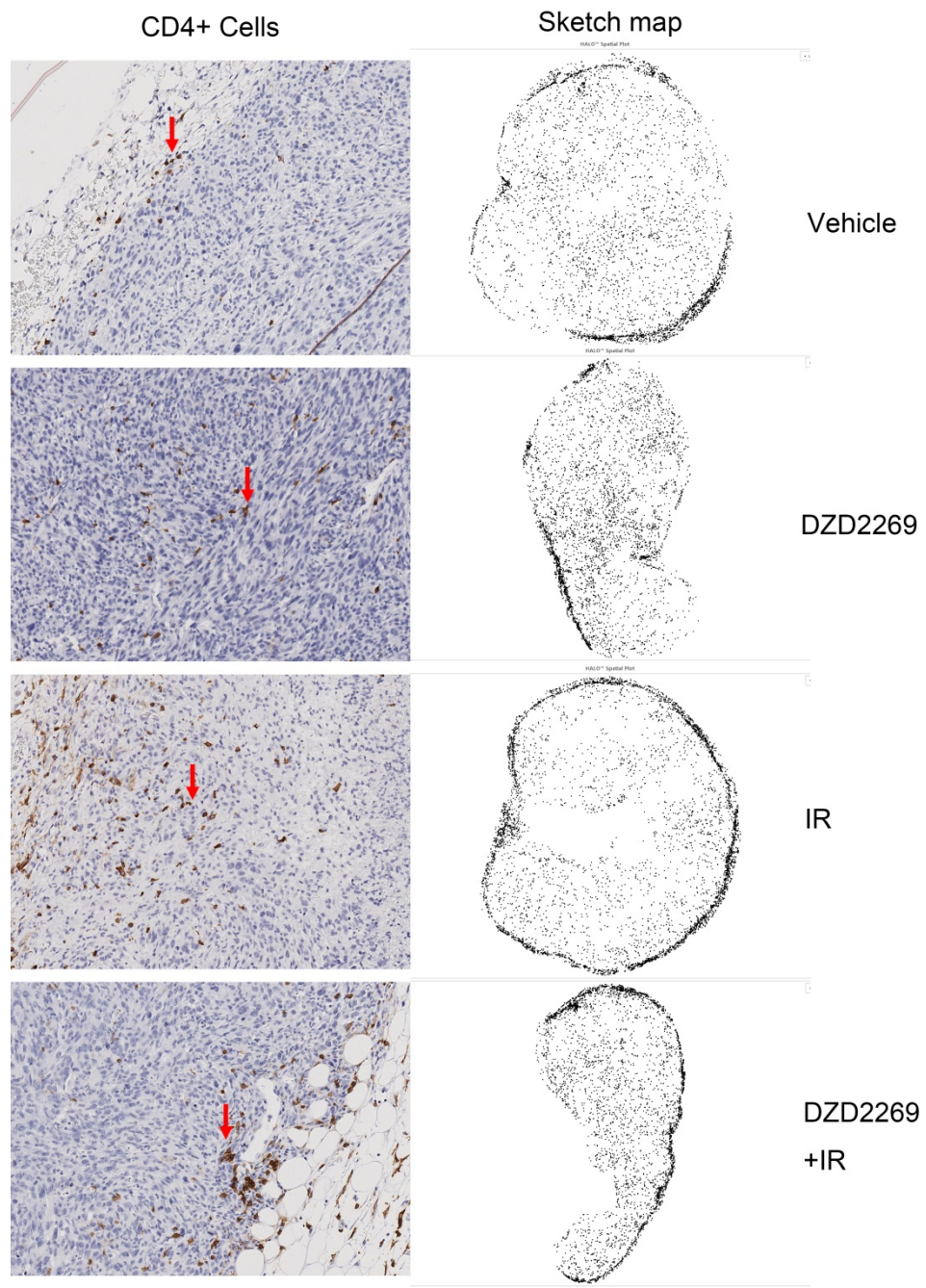


Figure S4. Immunohistochemistry (20×) and sketch map of CD4+ tumor infiltrating lymphocyte of MC38 tumor after combined treatment of DZD2269 and IR.

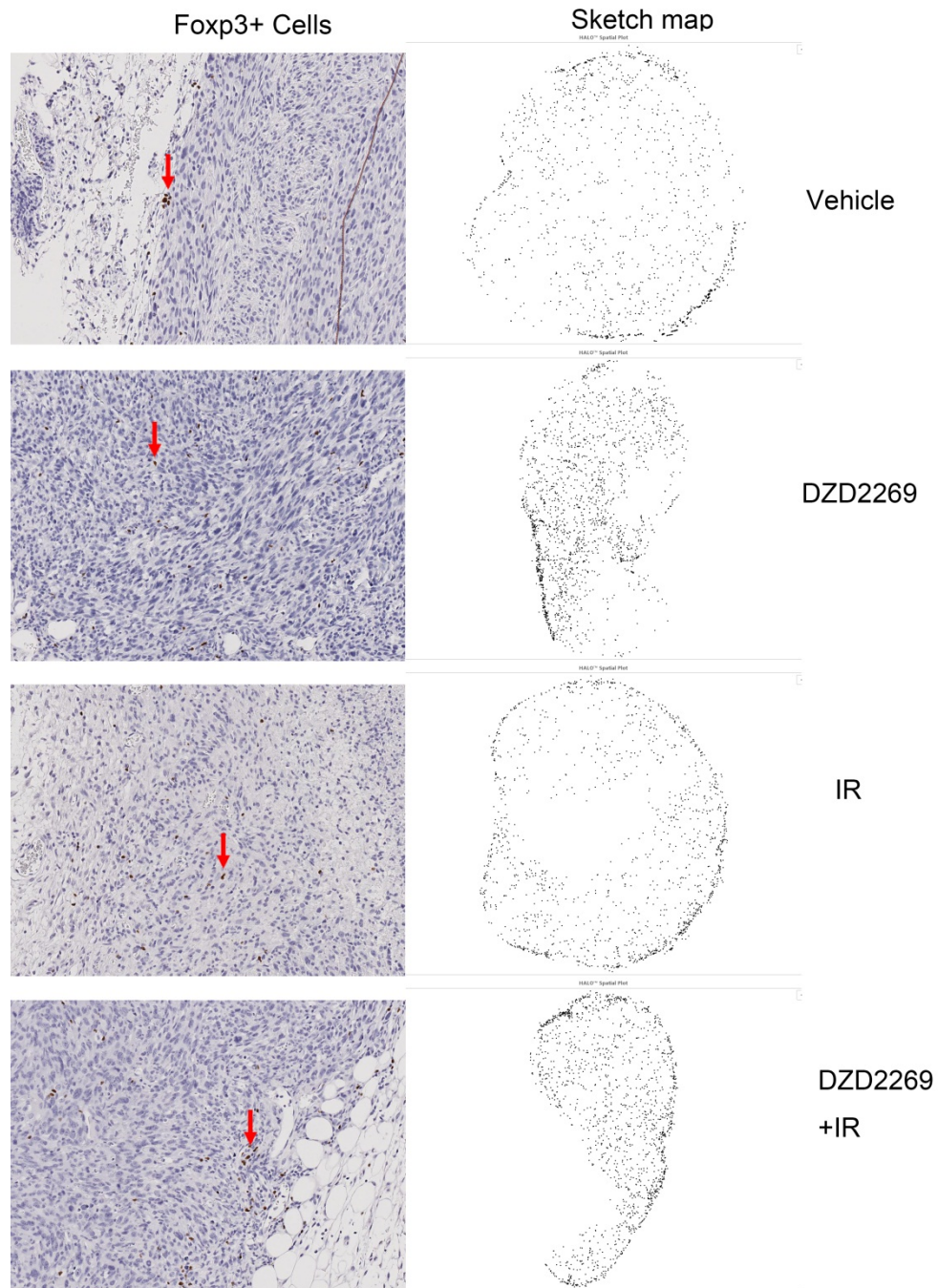
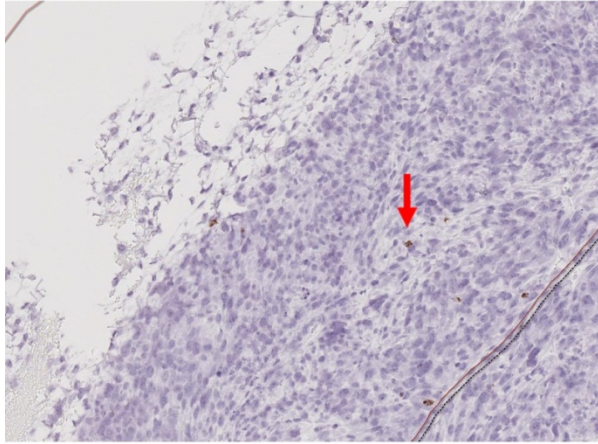
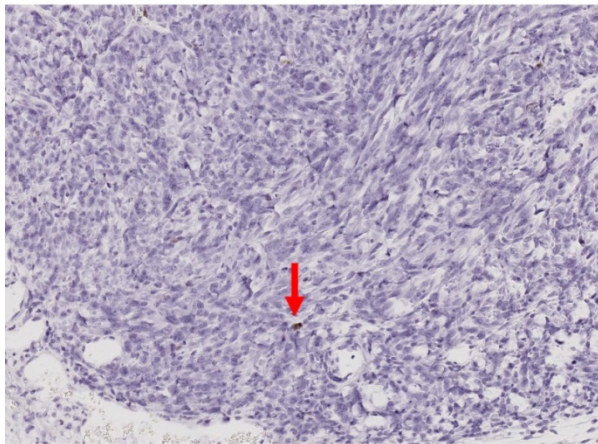


Figure S5. Immunohistochemistry (20×) and sketch map of Foxp3+ tumor infiltrating lymphocyte of MC38 tumor after combined treatment of DZD2269 and IR.

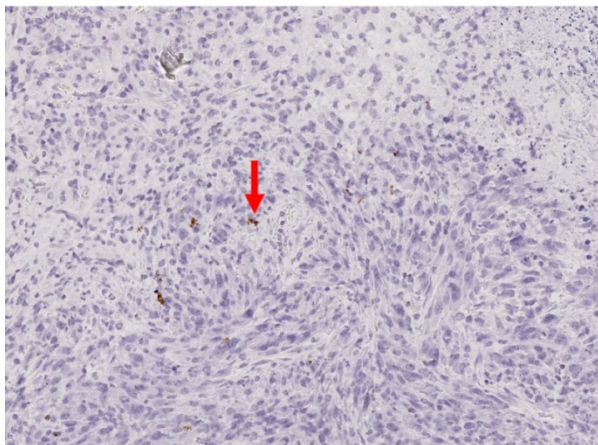
IFN- γ



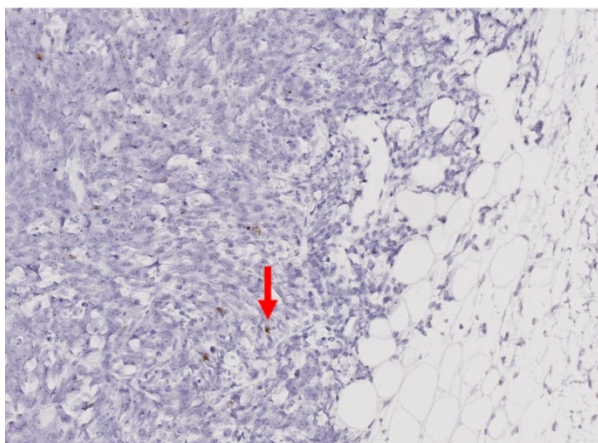
Vehicle



DZD2269



IR



DZD2269
+IR

Figure S6. ISH analysis of IFN- γ expression (20 \times) within tumor infiltrating lymphocyte of MC38 tumor after combined treatment of DZD2269 and IR.