

Figure S1 After transfecting with pcDNA3.1(+)-MEK1, the activity of ERK increased. Western blot analysis was performed to detect the phosphorylation level of ERK1/2 in GBC cells. All data are presented as the mean±standard deviation. ** $p < 0.01$, * $p < 0.05$ compared with the control or negative group.

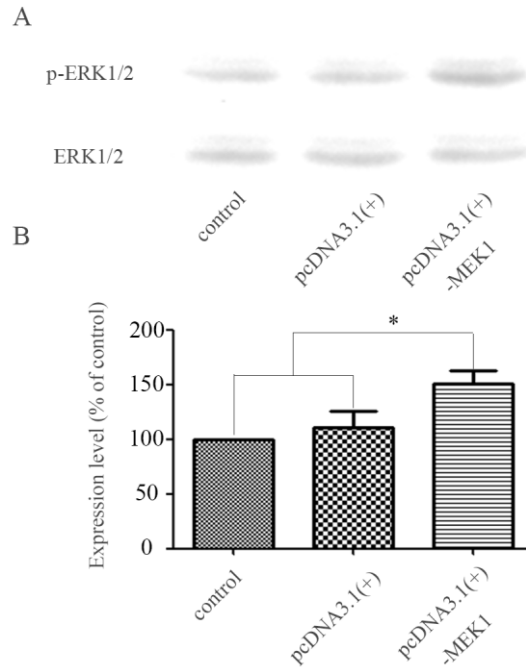


Figure S2 The over-activity of ERK signal pathway enhanced the pro-metastatic effect of IL-17A.

