

Supplemental Figure Legends

Figure S1. ABC294640 treatment reduces the proliferation of SF7761 cell line. DIPG cell line SF7761 were treated with the indicated concentrations of ABC294640 or vehicle for 72 h, then photoed by using a contrast microscope.

Figure S2. ABC294640 treatment shows little effects on normal brain cell growth. The cortical neuronal cell-line, HCN-2, were treated with the indicated concentrations of ABC294640 or vehicle for 72 h, then the cell proliferation status was examined using the WST-1 cell proliferation assays (Roche). Error bars represent S.D. for 3 independent experiments.

Figure S3. The distinct morphology between two of DIPG cell lines, SF8628 and SF7761.

Figure S4. The compositions and proportions of ceramide species in ABC294640-treated DIPG cells. Relative compositions and proportions of specific ceramide species were present and compared from vehicle- or ABC294640-treated DIPG cells. Each color representing a specific ceramide species is labeled beside the pie chart.

Figure S1

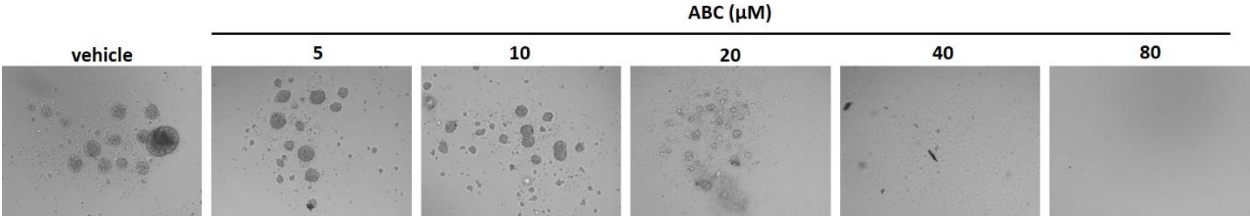


Figure S2

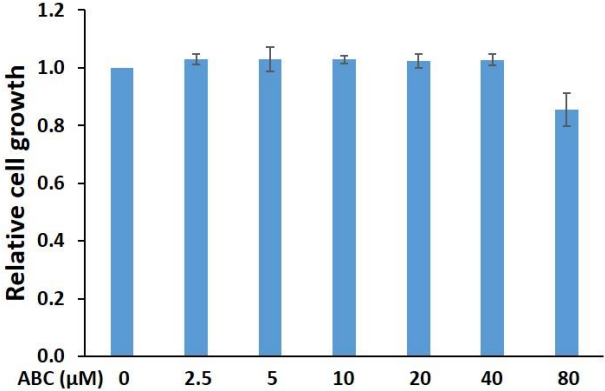
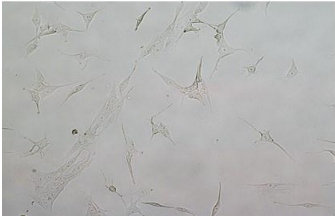


Figure S3

SF8628



SF7761

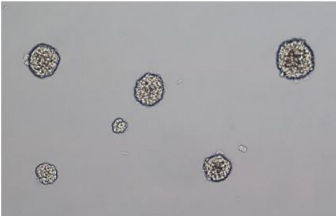


Figure S4

