

## PUBMED

- #1 breast cancer [MeSH Terms]
- #2 (((breast OR mammary) AND (carcinoma OR neoplasm OR tumor OR cancer))
- #3 #1 OR #2
- #4 metastatic OR advanced OR metastases OR metastasis
- #5 #3 AND #4
- #6 'cyclin-dependent kinase 4 and 6 inhibitor\*' OR 'cyclin-dependent kinase 4/6 inhibitor\*' OR 'CDK4 and CDK6 inhibitor\*' OR 'CDK4/6 inhibitor\*' OR 'CDK inhibitor\*' OR 'CDKi'
- #7 palbociclib OR ribociclib OR abemaciclib
- #8 #6 OR #7
- #9 #5 AND #8
- #10 (((((randomized controlled trial [pt] OR controlled clinical trial [pt] OR randomized controlled trials [mh] OR random allocation [mh] OR double-blind method [mh] OR single-blind method [mh] OR clinical trial [pt] OR clinical trials [mh] OR ( [clinical trial] [tw]) OR ((singl\* [tw] OR doubl\* [tw] OR trebl\* [tw] OR tripl\* [tw]) AND(mask\* [tw] OR blind\* [tw])) OR (placebos [mh] OR placebo\* [tw] OR random\* [tw] OR research design [mh:noexp])NOT (animals [mh] NOT human [mh])))
- #11 #9 AND #10

## COCHRANE

- #1 MeSH descriptor: [Breast Neoplasms] explode all trees
- #2 metastatic OR metastasis OR metastases OR advanced
- #3 #1 AND #2
- #4 palbociclib OR ribociclib OR abemaciclib
- #5 'cyclin-dependent kinase 4 and 6 inhibitor\*' OR 'cyclin-dependent kinase 4/6 inhibitor\*' OR 'CDK4 and CDK6 inhibitor\*' OR 'CDK4/6 inhibitor\*' OR 'CDK inhibitor\*' OR 'CDKi'
- #6 #4 OR #5
- #7 #3 AND #6

## EMBASE

- #1 ('breast'/exp OR breast) AND ('cancer'/exp OR cancer)
- #2 'metastatic':ab,ti OR 'metastasis':ab,ti OR 'metastases':ab,ti OR 'advanced':ab,ti
- #3 #1 AND #2
- #4 'cyclin-dependent kinase 4 and 6 inhibitor\*':ab,ti OR 'cyclin-dependent kinase 4/6 inhibitor\*':ab,ti OR 'cdk4 and cdk6 inhibitor\*':ab,ti OR 'cdk4/6 inhibitor\*':ab,ti OR 'cdk inhibitor\*':ab,ti OR 'cdki':ab,ti
- #5 'palbociclib':ab,ti OR 'ribociclib':ab,ti OR 'abemaciclib':ab,ti
- #6 #4 OR #5
- #7 #3 AND #6
- #8 'crossover procedure':de OR 'double-blind procedure':de OR 'randomized controlled trial':de OR 'single-blind procedure':de OR random\*:de,ab,ti OR factorial\*:de,ab,ti OR crossover\*:de,ab,ti OR ((cross NEXT/1 over\*):de,ab,ti) OR placebo\*:de,ab,ti OR ((doubl\* NEAR/1 blind\*):de,ab,ti) OR ((singl\* NEAR/1 blind\*):de,ab,ti) OR assign\*:de,ab,ti OR allocat\*:de,ab,ti OR volunteer\*:de,ab,ti

#9 #7 AND #8

**WEB OF SCIENCE**

#1 TS=(breast OR mammary) AND TS=(carcinoma OR neoplasm OR tumor OR cancer) AND TS=(metastatic OR advanced OR metastases OR metastasis)

#2 TS=('cyclin-dependent kinase 4 and 6 inhibitor\*' OR 'cyclin-dependent kinase 4/6 inhibitor\*' OR 'CDK4 and CDK6 inhibitor\*' OR 'CDK4/6 inhibitor\*' OR 'CDK inhibitor\*' OR 'CDKi')

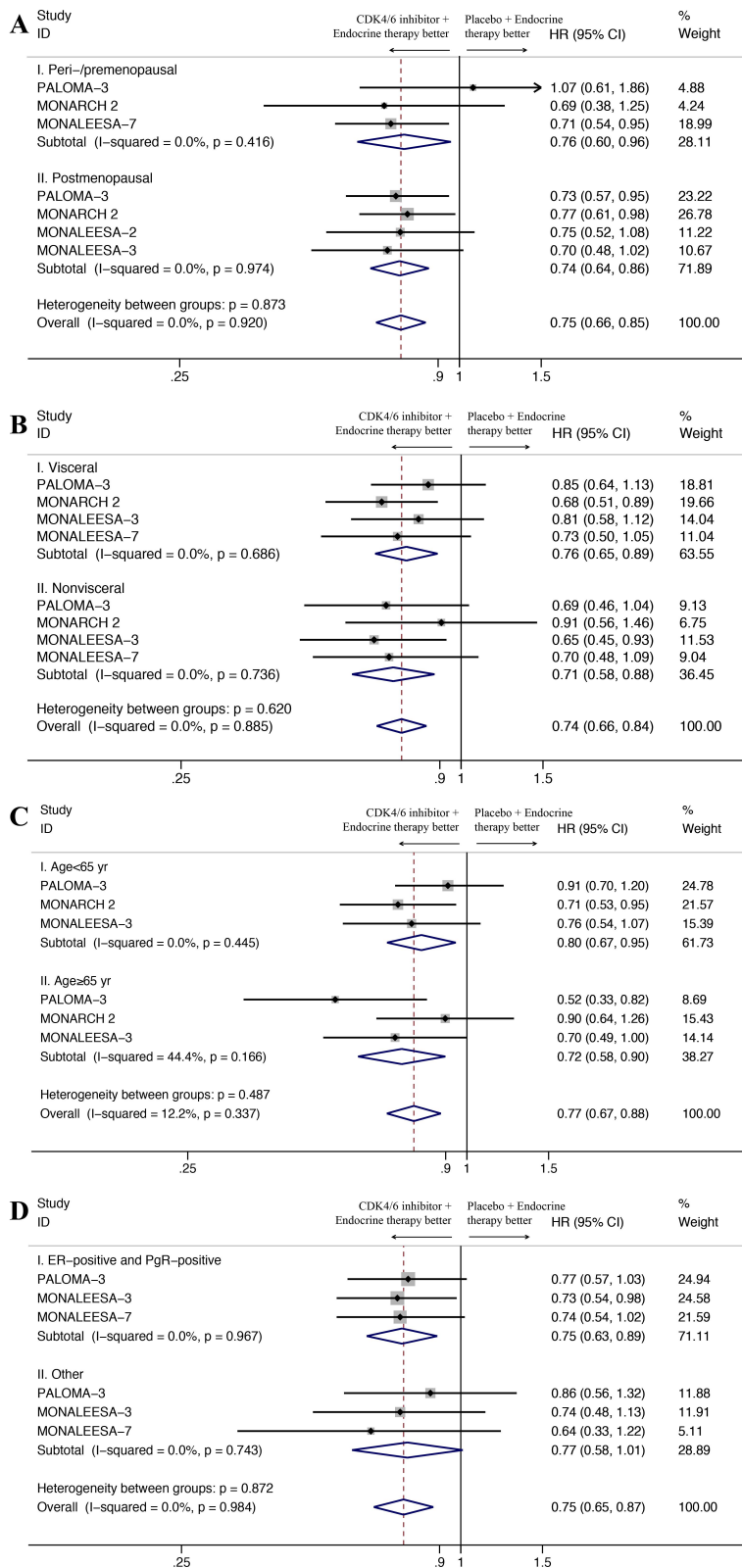
#3 TS=(palbociclib OR ribociclib OR abemaciclib)

#4 #2 OR #3

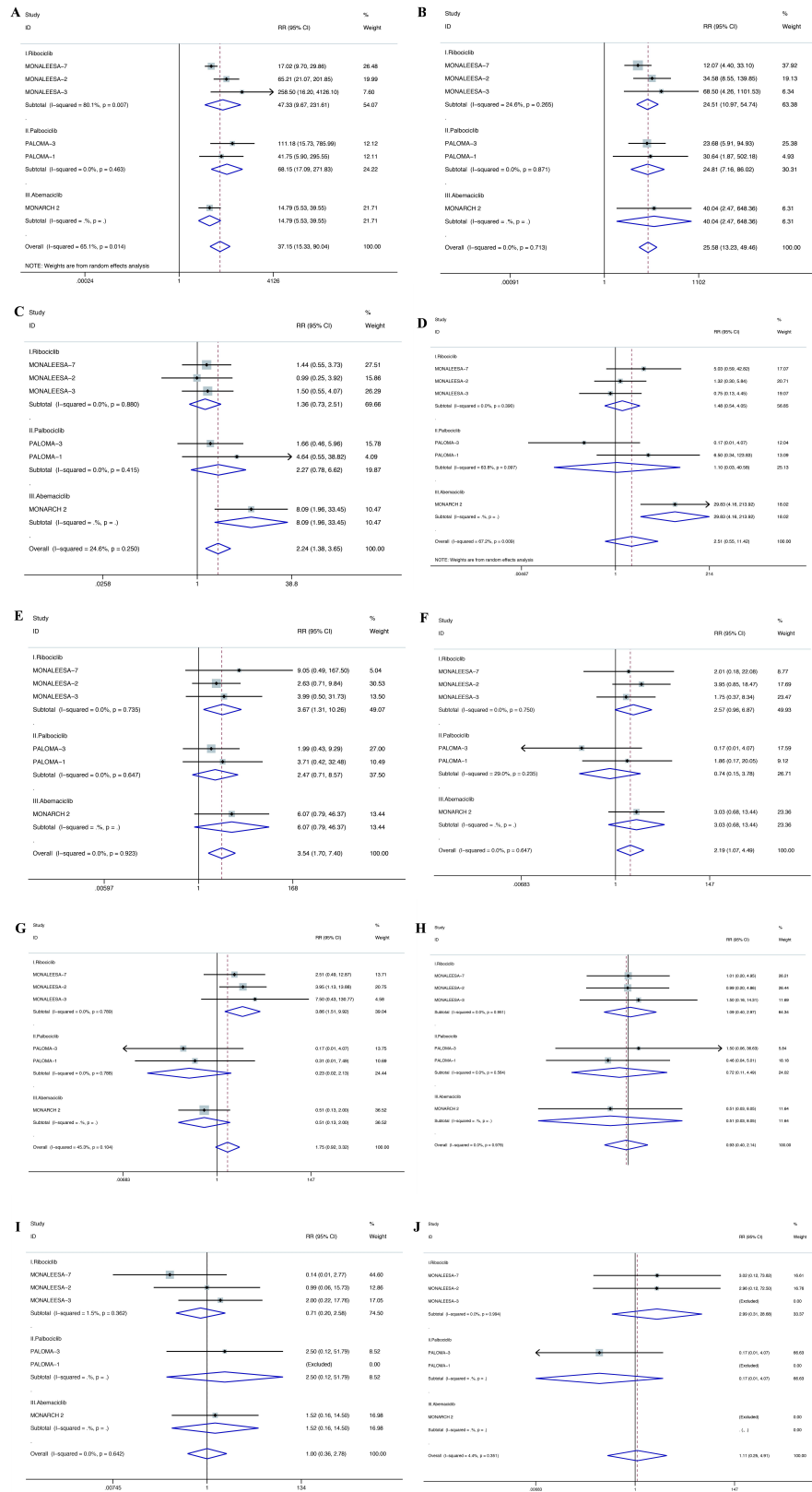
#5 #1 AND #4

#6 TS= clinical trial\* OR TS=research design OR TS=comparative stud\* OR TS=evaluation stud\* OR TS=controlled trial\* OR TS=follow-up stud\* OR TS=prospective stud\* OR TS=random\* OR TS=placebo\* OR TS=(single blind\*) OR TS=(double blind\*)

#7 #5 AND #6



**Figure S1** Forest plot showing pooled hazard ratios of overall survival in subgroup stratified by menopausal status (A), visceral involvement (B), age (C), and hormone-receptor status (D).



**Figure S2** Forest plot showing pooled risk ratios in subgroup stratified by different CDK4/6 inhibitors of grade 3-4 neutropenia (A), leucopenia (B), anaemia (C), diarrhea (D), fatigue (E), nausea (F), vomiting (G), arthralgia (H), headache (I) and hot flush (G).

