

Erratum

Phosphoglycerate Mutase 1 Predicts the Poor Prognosis of Oral Squamous Cell Carcinoma and is Associated with Cell Migration - Erratum

Dadong Zhang^{1,3*}, Heming Wu^{2*}, Xiaomin Zhang^{2*}, Xu Ding², Min Huang^{1,3}, Meiyu Geng^{1,3}, Hongwei Li²✉, Zuoquan Xie^{1,3}✉

1. Division of Anti-tumor Pharmacology, State Key Laboratory of Drug Research, Shanghai Institute of Materia Medica, Chinese Academy of Sciences, Shanghai 201203, China.
2. Jiangsu Key Laboratory of Oral Diseases, Nanjing Medical University; Department of oral and maxillofacial surgery, Affiliated Hospital of Stomatology, Nanjing Medical University, Nanjing 210029, China.
3. University of Chinese Academy of Sciences, Beijing 100049, China.

* Contributing equally to this article.

✉ Corresponding author: Zuoquan Xie, zqxie@simm.ac.cn; Telephone: 86-21-50806600-2413. Hongwei Li, lhwqhx@njmu.edu.cn.

© The author(s). This is an open access article distributed under the terms of the Creative Commons Attribution License (<https://creativecommons.org/licenses/by/4.0/>). See <http://ivyspring.com/terms> for full terms and conditions.

Published: 2020.01.24

Corrected article: *J Cancer* 2017; 8(11): 1943-1951. doi: 10.7150/jca.19278.

In our paper [1], the Figure 2C, Figure 2E and Figure 4B should be corrected as the following Figure A1, Figure A2 and Figure A3.

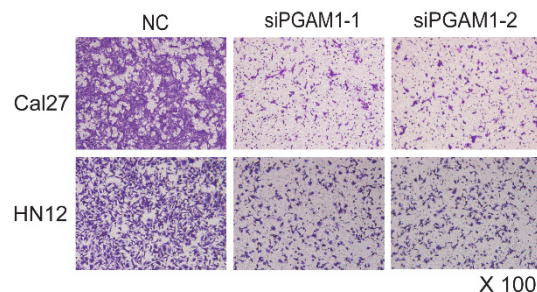


Figure A1. (Figure 2C). **Decreased cell migration after knocking down PGAM1.** Cell migration (24 h) was dramatically decreased after knocking down PGAM1 in both Cal27 and HN12 cells.

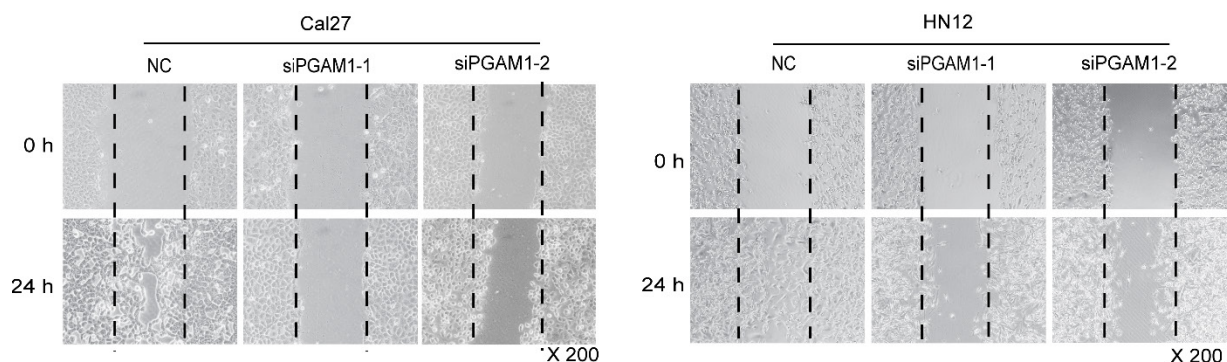


Figure A2. (Figure 2E). **Decreased cell mobility after knocking down PGAM1.** Cell mobility was decreased after knocking down of PGAM1 in both Cal27 and HN12, as determined by the wound-healing assay.

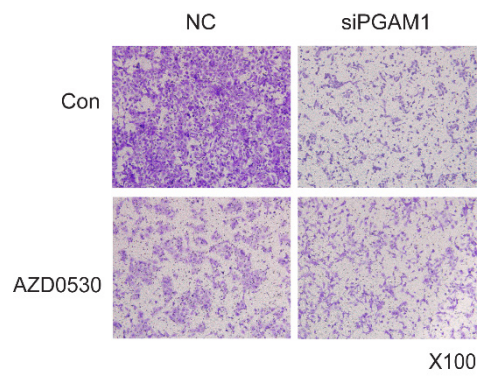


Figure A3. (Figure 4B). **SRC phosphorylation is required for PGAM1-mediated cell migration.** Cell migration was decreased by AZD0530 or PGAM1 knock down, while pretreatment with AZD0530 abolished a further decrease in cell migration when PGAM1 was knocked down.

References

- [1] Zhang D, Wu H, Zhang X, Ding X, Huang M, Geng M, Li H, Xie Z. Phosphoglycerate Mutase 1 Predicts the Poor Prognosis of Oral Squamous Cell Carcinoma and is Associated with Cell Migration. *J Cancer*. 2017;8(11):1943-1951. doi: 10.7150/jca.19278.