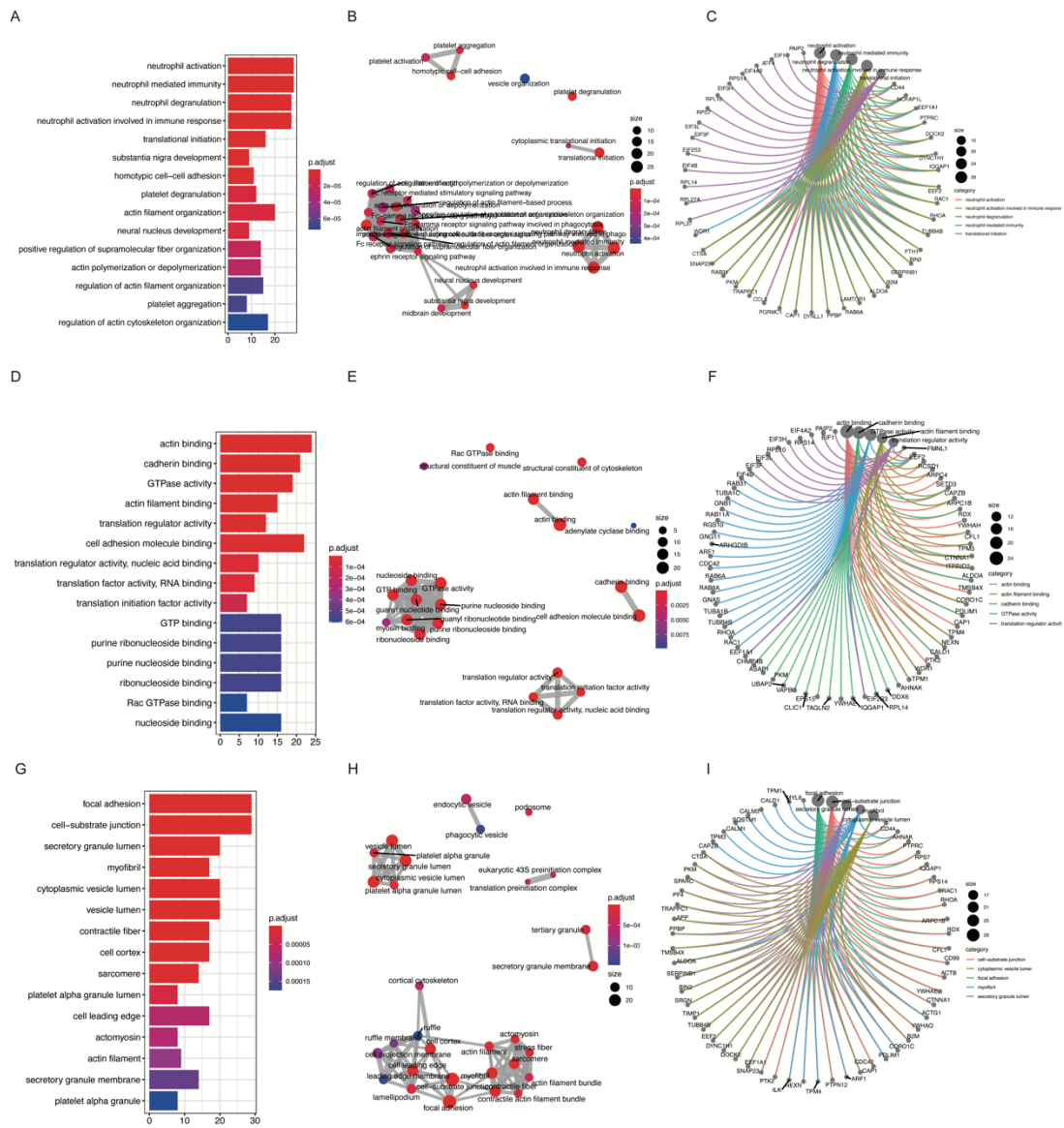
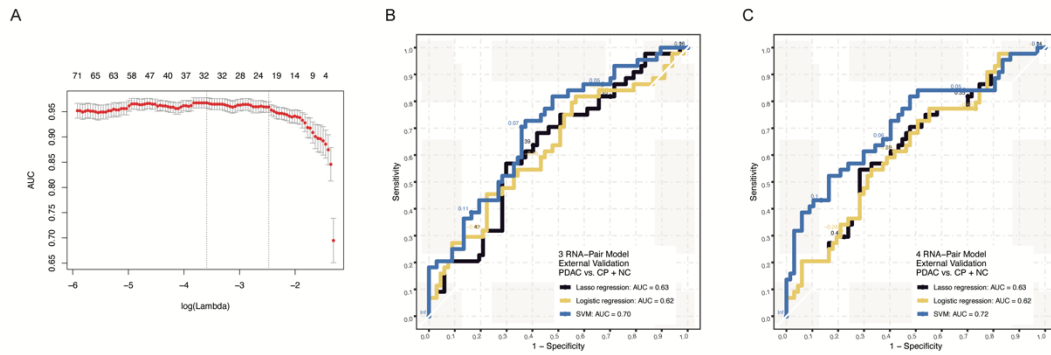


**Figure S1. GO analysis of DE genes.**



A. Bar plot to show DE RNAs enriched biological processes. Neutrophil activation and neutrophil mediated immunity were significantly enriched. B. Relationship of enriched-biological processes. C. Genes involved in enriched biological processes. D. Bar plot showing DE RNAs enriched molecular function. Actin binding and cell adhesion molecule binding were significantly enriched. E. Relationship of enriched-molecular functions. F. Genes involved in enriched molecular functions. G. Bar plot to show DE RNAs enriched cellular components. H. Relationship of enriched-cellular components. I. Genes involved in enriched cellular components.

**Figure S2. Model establishment and verification.**



A. Relationship between lambda and AUC in Lasso regression. B. The ROC of models constructed by 3 RNA-pair with different algorithms in external RT-qPCR verification (PDAC vs. NC + CP). C. The ROC of models constructed by 4 RNA-pair with different algorithms in external RT-qPCR verification (PDAC vs. NC + CP).

Table S1. Primer sequence used in RT-qPCR assay

Primer name	Primer sequence	Base number
CD44-F	CATGGACAAGTTTTGGTGGCA	21
CD44-R	CGTGAATACACCTGCAAAGC	21
CD44-P	ACTCTGCCTCGTGCCGCTGA	20
FBXO7-F	ATCTGCGTGATTTTCGAGACA	21
FBXO7-R	CATCACAAACCGCCCTTTC	19
FBXO7-P	ACTGTCAGAGTTCAAGACACAGATTGGA	28
MORF4L1-F	AGTATGCAGAGGGGAAGATGAG	22
MORF4L1-R	TGGTACTGCCACCATCTCC	19
MORF4L1-P	TGCCCCAGGAAAGAAGACATCTGGTCT	27
SETD3-F	AACACAGCTCGACAGTACGC	20
SETD3-R	GCCCACCTGTAGTCCTCGTA	20
SETD3-P	TCATCCAGACCCATCCTCATGCCA	24
TALDO1-F	CGTCAGAGGATGGAGTCCG	19
TALDO1-R	TCCTGGGGCTTGTACTCGT	19
TALDO1-P	AGCTCAAGCAGTTCACCACCGT	22
TUBA1B-F	CTCCTAATCCCTAGCCACTATGC	23
TUBA1B-R	TGCCAATCTGGACACCAGC	19
TUBA1B-P	TGAGTGCATCTCCATCCACGTTGGC	25
DDX17-F	ACCACCAGCCATACTTGA	19
DDX17-R	GGGCAAGCTCTCTGGTAGG	19
DDX17-P	ACTAGACAGATTGGGCCATCTCCCCT	26
AHNAK-F	CAGGAGGTGACGCAGAACTC	20
AHNAK-R	ATGGTGGCACCCACAATCTG	20
AHNAK-P	TGGGGTGGTCAAGGAGGGGA	21

\* F means forward primer. R means reverse primer. P means probe.

Table S2. DE genes coefficient

	logFC	AveExpr	t	P.Valu e	adj.P.V al	B
TCF7	48.75750	70.89570	10.79890	5.38E-	1.39E-	41.08633
	7	57	53	23	18	51
BTG1	65.30763	163.3880	10.18639	5.73E-	7.38E-	36.60625
	16	13	77	21	17	4
CD44	93.32189	225.8595	10.04459	1.66E-	1.43E-	35.58532
	41	49	43	20	16	8
AHNAK	546.6959	1067.560	9.756218	1.41E-	9.11E-	33.52960
	86	53	1	19	16	92
STK17B	87.79198	267.0766	9.687938	2.34E-	1.21E-	33.04704
	68	35	46	19	15	35
FBXO7	184.8949	332.2199	9.074981	1.97E-	8.48E-	28.79176
	28	56	02	17	14	77
TNRC6B	35.64705	82.70470	8.981738	3.82E-	1.41E-	28.15724
		41	29	17	13	14
BACH2	18.08545	27.27257	8.693033	2.90E-	9.33E-	26.21545
	92	01	29	16	13	78
PAX5	36.89148	56.74793	8.661175	3.61E-	1.03E-	26.00336
	44	5	08	16	12	16

---

DYRK2	19.47728	41.27817	8.637203	4.27E-	1.10E-	25.84406
	38	26	71	16	12	37
MARF1	54.56385	178.6852	8.419989	1.90E-	4.45E-	24.41221
	69	91	74	15	12	72
IKZF3	56.98886	138.4623	8.404210	2.12E-	4.55E-	24.30903
	52	37	81	15	12	27
CAMK1D	20.71862	50.38347	8.333978	3.41E-	6.77E-	23.85114
	21	37	68	15	12	39
ITGA4	40.53318	83.97503	8.313164	3.93E-	7.24E-	23.71587
	51	89	27	15	12	89
FAM102A	22.54617	44.01408	8.297853	4.36E-	7.49E-	23.61650
	11	01	47	15	12	85
DDX6	68.21591	285.9362	8.270586	5.24E-	8.45E-	23.43981
	27	45	5	15	12	08
SRCAP	22.06179	58.37714	8.115734	1.48E-	2.25E-	22.44298
	1	31	09	14	11	28
TXNIP	247.5598	942.4297	8.079815	1.89E-	2.70E-	22.21340
	62	15	09	14	11	14
ARID1A	48.52509	202.2695	7.983654	3.57E-	4.84E-	21.60186
	82	59	02	14	11	41
RALGPS2	37.37638	71.39880	7.893479	6.47E-	8.17E-	21.03254
	65	92	64	14	11	01

---

---

SESN3	71.46108	156.7434	7.889179	6.66E-	8.17E-	21.00549
	4	03	45	14	11	16
KLF13	43.13203	142.2073	7.802371	1.18E-	1.32E-	20.46145
	93	62	18	13	10	39
LOC10537093	43.13203	142.2073	7.802371	1.18E-	1.32E-	20.46145
9	93	62	18	13	10	39
NCKAP1L	44.07685	139.5463	7.744028	1.72E-	1.78E-	20.09796
	84	39	97	13	10	62
BCL11B	21.17005	45.52672	7.743485	1.72E-	1.78E-	20.09459
	12	7	82	13	10	05
IL7R	46.46890	85.79171	7.688665	2.46E-	2.40E-	19.75465
	85	63	13	13	10	07
LBH	49.87465	144.4837	7.685410	2.51E-	2.40E-	19.73452
	29	9	91	13	10	04
IL16	34.45426	123.3880	7.601660	4.31E-	3.97E-	19.21834
	83	56	02	13	10	09
SLC38A1	31.58835	78.57485	7.513580	7.57E-	6.73E-	18.67945
	17	89	02	13	10	97
BCL9L	29.89062	55.56357	7.405814	1.50E-	1.26E-	18.02577
	52	68	82	12	09	75
ELMSAN1	22.17806	59.89946	7.403967	1.52E-	1.26E-	18.01462
	73	42	99	12	09	96

---

---

CHMP7	17.61837	45.77800	7.378218	1.78E-	1.44E-	17.85939
	9	54	27	12	09	16
SRRM2	119.2319	281.4840	7.367127	1.91E-	1.49E-	17.79263
	78	35	5	12	09	97
RPL37	143.7845	422.7251	7.322232	2.54E-	1.88E-	17.52311
	61	19	12	12	09	57
PRPF8	47.49208	178.7618	7.321245	2.55E-	1.88E-	17.51720
		78	82	12	09	69
EEF1A1	1855.651	7047.038	7.301783	2.88E-	2.01E-	17.40071
	22	67	16	12	09	98
CAMK4	11.87237	17.19606	7.301468	2.89E-	2.01E-	17.39884
	79	48	94	12	09	08
CD37	65.01756	265.4365	7.296479	2.98E-	2.02E-	17.36901
	41	21	78	12	09	44
AAK1	25.27529	68.22403	7.277593	3.35E-	2.18E-	17.25622
	19	26	01	12	09	91
ELK4	49.77993	199.1086	7.275867	3.39E-	2.18E-	17.24593
	87	28	23	12	09	32
FAM117B	16.27968	42.46664	7.247521	4.04E-	2.54E-	17.07705
	04	86	19	12	09	85
KMT2D	43.06503	89.00155	7.224252	4.67E-	2.87E-	16.93876
	82	22	24	12	09	52

---

---

FOXP1	33.56089	130.3625	7.217172	4.88E-	2.93E-	16.89675
	74	55	92	12	09	09
WDFY4	31.52814	64.05173	7.176742	6.27E-	3.55E-	16.65734
	36	48	42	12	09	23
BMF	8.845236	16.41175	7.175924	6.31E-	3.55E-	16.65250
	7	97	2	12	09	66
BNIP3L	695.1621	1351.693	7.175020	6.34E-	3.55E-	16.64716
	57	48	69	12	09	74
RPL27A	177.7830	682.4360	7.153053	7.26E-	3.98E-	16.51749
	28	35	69	12	09	66
BCL11A	15.00476	34.45577	7.147576	7.51E-	4.03E-	16.48520
	16	16	8	12	09	9
FOXO1	17.47595	48.37098	7.141371	7.81E-	4.11E-	16.44864
	71	53	43	12	09	73
BLK	11.76452	20.42273	7.131090	8.32E-	4.29E-	16.38811
	52	96	38	12	09	99
SEC16A	23.31369	64.66189	7.125548	8.60E-	4.35E-	16.35551
	41	34	64	12	09	9
LANCL1	10.92647	23.08748	7.095015	1.04E-	5.15E-	16.17620
	71	54	11	11	09	91
SETD1B	17.92715	37.99324	7.086863	1.09E-	5.31E-	16.12842
	8	12	61	11	09	86

---



---

	-		-			
	90.66034			1.12E-	5.34E-	16.10417
ARPC4-TTLL3	36.54761		7.082722			
		51		11	09	15
	8		8			
	32.24223	117.0634	7.035107	1.50E-	7.02E-	15.82594
CYLD						
	14	54	81	11	09	55
	20.45995	41.62537	7.013513	1.71E-	7.87E-	15.70019
MS4A1						
	5	84	97	11	09	63
	9.067812	17.47718	7.006800	1.78E-	8.05E-	15.66115
SPIB						
	76	71	07	11	09	35
	42.46676	116.5786	6.975358	2.16E-	9.58E-	15.47865
HLA-DPA1						
	23	12	07	11	09	79
	24.21219	51.95151	6.956291	2.42E-	1.06E-	15.36826
LEF1						
	34	9	08	11	08	84
	-		-			
	1059.797			2.57E-	1.11E-	15.30900
GAPDH	344.8177		6.946039			
		39		11	08	25
	5		3			
	41.65882	119.6011	6.917822	3.05E-	1.29E-	15.14619
ZFP36L2						
	09	05	2	11	08	49
	15.50283	39.41341	6.911061	3.18E-	1.32E-	15.10725
CBLB						
	07	93	66	11	08	69
	24.90477	59.84899	6.893726	3.53E-	1.44E-	15.00753
KIF21B						
	09	4	1	11	08	33

---

---

TNFRSF13C	11.06332	17.43151	6.888353	3.65E-	1.46E-	14.97666
	8	63	99	11	08	58
BAZ2A	35.26085	138.1071	6.887076	3.67E-	1.46E-	14.96933
	74	9	86	11	08	01
KLHL36	11.26106	27.40300	6.875322	3.94E-	1.54E-	14.90185
	36	21	67	11	08	99
SON	65.88085	266.3604	6.862654	4.26E-	1.64E-	14.82923
	37	49		11	08	16
MLLT6	44.96870	123.2468	6.822532	5.41E-	2.03E-	14.59984
	15		88	11	08	63
IQSEC1	41.01253	132.4704	6.821472	5.45E-	2.03E-	14.59379
	43	39	44	11	08	64
SSR2	16.96679	49.62763	6.805049	6.01E-	2.21E-	14.50018
	2	93	54	11	08	69
ZBTB20	20.99824	61.00702	6.788462	6.63E-	2.41E-	14.40580
	47	12	91	11	08	7
ZNF91	40.57744	118.7212	6.786158	6.73E-	2.41E-	14.39270
	95	91	83	11	08	95
TMC8	16.06864	21.73763	6.722883	9.79E-	3.46E-	14.03426
	56	01	08	11	08	
RPL14	165.8080	552.6921	6.694023	1.16E-	4.05E-	13.87157
	62	13	58	10	08	34

---

---

WDR82	29.40161	122.6337	6.667153	1.36E-	4.68E-	13.72055
	15	08	94	10	08	65
RASSF2	46.39916	181.3791	6.613470	1.86E-	6.33E-	13.42014
	64	87	47	10	08	99
AKNA	82.14248	277.3453	6.559839	2.55E-	8.54E-	13.12179
	78	99	28	10	08	51
GNG7	5.946197	9.823094	6.553702	2.64E-	8.74E-	13.08776
	9	19	54	10	08	87
CTC1	10.84649	20.28187	6.504754	3.51E-	1.15E-	12.81719
	89	67	12	10	07	66
ARPC4	-	143.7332	-	3.83E-	1.23E-	12.73405
	46.08541	7	6.489658	10	07	1
			3			
ETS1	103.9086	433.2274	6.485869	3.92E-	1.25E-	12.71320
	28	73	46	10	07	49
MAP3K1	39.65715	153.6541	6.476981	4.12E-	1.30E-	12.66433
	37	32	28	10	07	74
NSUN3	14.79145	22.72146	6.460890	4.52E-	1.40E-	12.57599
	37	77	78	10	07	66
EIF4B	164.3422	800.5566	6.445565	4.94E-	1.52E-	12.49200
	97	2	38	10	07	67

---

---

DENND4B	13.71617	30.67459	6.439380	5.12E-	1.55E-	12.45815
	17	1	87	10	07	45
GGA2	20.71326	64.69901	6.436662	5.20E-	1.56E-	12.44328
	03	33	83	10	07	43
CRTC3	12.40495	32.09636	6.431298	5.36E-	1.57E-	12.41395
	46	03	62	10	07	07
MGAT4A	11.83401	27.29375	6.431134	5.37E-	1.57E-	12.41305
	18	77	91	10	07	58
FMNL3	17.99697	50.30123	6.421641	5.67E-	1.64E-	12.36119
	56	61	99	10	07	
PRDM2	21.09915	94.49161	6.417828	5.79E-	1.66E-	12.34036
	06	26	21	10	07	89
SFT2D2	14.28306	34.28113	6.402599	6.32E-	1.79E-	12.25731
	77	94	56	10	07	99
REL	16.36379	49.45098	6.400807	6.39E-	1.79E-	12.24755
	67	04	5	10	07	66
HDGF	-	237.0912	-	6.49E-	1.80E-	12.23279
	90.45569		6.398097			
		52		10	07	57
	9		4			
AFF3	16.02143	32.56600	6.384840	7.00E-	1.92E-	12.16065
	4	33	42	10	07	56

---

---

	-		-			
		244.2965		7.20E-	1.94E-	12.13372
RAC1	80.19674		6.379886			
		87		10	07	57
	8		4			
	-		-			
		1120.256		7.23E-	1.94E-	12.12927
MYL6	646.8020		6.379067			
		74		10	07	59
	2		5			
	45.81265	175.5351	6.364630	7.85E-	2.09E-	12.05089
INPP5D						
	63	78	99	10	07	62
	-		-			
		196.5071		7.98E-	2.10E-	12.03579
MORF4L1	55.72624					
		88	6.361847	10	07	65
	6					
	-		-			
		46.69361		8.94E-	2.32E-	11.92781
BTBD10	16.48346					
		69	6.341912	10	07	59
	2					
	16.06309	60.24979	6.340290	9.02E-	2.32E-	11.91904
SIK3						
	68	33	53	10	07	41
	32.12663	110.1582	6.338140	9.13E-	2.33E-	11.90741
PRRC2B						
	46	72	45	10	07	52
	-		-			
		163.7178		9.65E-	2.44E-	11.85438
SETD3	42.09236		6.328329			
		2		10	07	85
	3		4			

---

---

	-		-			
		90.30143		1.01E-	2.52E-	11.81257
UBE2Q1	29.60348		6.320585			
		52		09	07	82
	3		6			
	-		-			
		63.53354		1.08E-	2.67E-	11.74920
NUCB2	26.26462		6.308834			
		14		09	07	2
	6		1			
	-		-			
		2331.551		1.22E-	3.00E-	11.63103
PTMA	1091.161		6.286878			
		4		09	07	1
			4			
	45.36403	167.0323	6.277276	1.29E-	3.13E-	11.57944
ATM						
	35	44	25	09	07	67
	14.91065	48.01961	6.272085	1.33E-	3.19E-	11.55158
MSL2						
	03	11	43	09	07	54
	59.85054	238.7460	6.270726	1.34E-	3.19E-	11.54429
EIF2S3						
	22	91	13	09	07	23
	-		-			
		90.04355		1.36E-	3.21E-	11.52913
PHF14			6.267900			
	30.76049	24		09	07	64
			6			
	6.314318	12.84265	6.262862	1.40E-	3.26E-	11.50212
EML3						
	13	69	23	09	07	31

---

---

	-		-			
		15.38467		1.40E-	3.26E-	11.49858
ARNTL2	10.39260		6.262202			
		25		09	07	78
	3		6			
	-		-			
		42.51893		1.56E-	3.60E-	11.39612
DERA	27.94298		6.243061			
		34		09	07	24
	8		9			
	22.32231	70.37754	6.239921	1.59E-	3.63E-	11.37933
PPP1R16B						
	82	12	44	09	07	28
	31.81112	53.14852	6.223466	1.74E-	3.93E-	11.29146
OGT						
	35	4	18	09	07	48
	26.28557	76.07920	6.222545	1.75E-	3.93E-	11.28655
TBCEL						
	28	98	08	09	07	15
	-		-			
		77.91739		1.79E-	3.96E-	11.26510
DNAJC2	33.39250		6.218522			
		63		09	07	12
	5		6			
	-		-			
		60.09215		1.80E-	3.96E-	11.26344
COP1	20.40535		6.218211			
		97		09	07	31
	5		6			
	-		-			
		326.4066		1.85E-	4.05E-	11.23321
TALDO1	137.6950		6.212539			
		3		09	07	5
	9		5			

---

---

	-		-			
		277.4538		1.98E-	4.26E-	11.17206
CAPZB	80.27380		6.201053			
		1		09	07	86
	4		9			
	-		-			
		91.07619		1.98E-	4.26E-	11.16894
EHBP1	36.44157		6.200467			
		77		09	07	9
	4		5			
	36.52964	146.2989	6.196576	2.03E-	4.32E-	11.14825
POLR2A						
	09	12	55	09	07	54
	32.16214	158.0297	6.194615	2.05E-	4.33E-	11.13782
RBL2						
	82	72	44	09	07	91
	-		-			
		715.3333		2.09E-	4.38E-	11.11930
RHOA			6.191130			
	218.4671	43		09	07	59
			2			
	-		-			
		292.0897		2.21E-	4.55E-	11.06733
ATF4	149.5346		6.181343			
		87		09	07	53
	5		7			
	-		-			
		95.64918		2.21E-	4.55E-	11.06702
SMS	36.59371		6.181284			
		96		09	07	32
	7		9			
	-		-			
		787.6661		2.22E-	4.55E-	11.06102
ANP32B	295.6215		6.180154			
		54		09	07	69
	7		9			

---



---

	-		-			
	27.02395		2.25E-	4.56E-	11.05098	
SMYD3	18.74121	6.178261	09	07	13	
	99					
	3	7				
	15.98934	51.60769	6.174782	2.29E-	4.61E-	11.03252
SMCR8	66	41	78	09	07	89
	16.43053	39.27770	6.167732	2.38E-	4.76E-	10.99515
COBLL1	43	97	51	09	07	74
	-		-			
	257.3255		2.42E-	4.80E-	10.97942	
DAP	168.6784	6.164763	09	07	88	
	26					
	4	4				
	62.08682	265.3862	6.163354	2.44E-	4.80E-	10.97196
CYFIP2	15	88	47	09	07	69
	42.56460	197.3688	6.159150	2.50E-	4.88E-	10.94971
FNBP1	77	58	63	09	07	09
	24.93458	74.00905	6.153551	2.58E-	4.99E-	10.92008
RCAN3	53	53	83	09	07	75
	15.42833	43.41588	6.151753	2.60E-	4.99E-	10.91057
KIAA1147	69	6	89	09	07	89
	-		-			
	73.80508	147.4053	6.149836	2.63E-	4.99E-	10.90044
TUBB4B				09	07	3
	2	9				

---

---

	-		-			
		273.5484		2.63E-	4.99E-	10.90010
TIMP1	239.6804		6.149773			
		89		09	07	69
	3		3			
	16.97340	41.77688	6.147500	2.67E-	5.02E-	10.88809
MDM4						
	02	32	79	09	07	42
TMEM56-	10.33934	14.55410	6.143357	2.73E-	5.10E-	10.86620
RWDD3						
	65	71	78	09	07	29
	-		-			
		11540.54		2.78E-	5.16E-	10.84790
FTH1	7745.913		6.139893			
		52		09	07	47
	8		1			
	-		-			
				2.84E-	5.23E-	10.82710
ICA1	25.02857	40.75871	6.135953			
				09	07	94
	1		9			
	23.69250	88.64593	6.131946	2.91E-	5.31E-	10.80596
NUFIP2						
	29	11	38	09	07	4
	-		-			
		168.5258		3.29E-	5.98E-	10.68742
ZCCHC17			6.109443			
	121.0764	73		09	07	31
			3			
	9.458814	18.82424	6.106228	3.35E-	6.04E-	10.67051
OSBPL10						
	52	93	42	09	07	49
	37.78738	148.0853	6.104262	3.39E-	6.07E-	10.66017
EIF3F						
	8	95	1	09	07	67

---

---

SZT2	9.653315	16.29959	6.102995	3.41E-	6.07E-	10.65351
	4	5	6	09	07	92
FOXK1	11.58100	29.56768	6.095923	3.55E-	6.26E-	10.61636
	72	21	68	09	07	43
HSPB1	-	101.8071	-	3.57E-	6.26E-	10.60990
	43.33589		6.094694			
		89		09	07	92
	3		4			
JADE2	21.20278	69.41045	6.089930	3.67E-	6.39E-	10.58490
	01	62	72	09	07	38
EIF3L	60.38538	263.2253	6.087344	3.72E-	6.39E-	10.57133
	86	57	32	09	07	36
WIPI1	-	45.27843	-	3.72E-	6.39E-	10.57129
	23.68295	81	6.087337	09	07	51
CCNB1	-	24.66233	-	3.75E-	6.41E-	10.56338
	13.44033		6.085829			
		71		09	07	71
	5		4			
ARPC1B	-	520.9615	-	3.78E-	6.42E-	10.55546
	261.1877		6.084319			
		74		09	07	74
	6		3			
BCAP31	-	100.5766	-	3.86E-	6.50E-	10.53701
	78.35701		6.080799			
		69		09	07	56
	9		8			

---

---

	-						
RAB32	49.98746	72.99316	-	3.93E-	6.58E-	10.51837	
		96	6.077242	09	07	09	
	2						
	-						
LUC7L2	75.71499	132.9783	-	4.08E-	6.79E-	10.48299	
		63	6.070487	09	07	97	
	3		9				
	-						
SRGN	230.6365	303.0291	-	4.25E-	7.02E-	10.44513	
		75	6.063251	09	07	59	
	8		6				
	-						
RHOC	24.55803	87.14869	-	4.57E-	7.51E-	10.37502	
		4	6.049834	09	07	04	
	4						
	-						
TUBA1B	183.0082	592.1178	-	4.61E-	7.51E-	10.36857	
		4	6.048599	09	07	33	
	8		1				
	-						
RDX	42.62863	132.7428	-	5.07E-	8.22E-	10.27789	
		22	6.031209	09	07	13	
	6		3				
	-						
CETN2	33.99522	45.86858	-	5.17E-	8.34E-	10.25811	
		83	6.027411	09	07	52	
	1		8				

---

---

CIITA	19.09076	39.14895	6.018016	5.45E-	8.72E-	10.20922
	57	07	52	09	07	88
RNF44	18.89456	51.60644	6.014198	5.56E-	8.82E-	10.18937
	64	64	14	09	07	74
OPA1	40.28893	111.8731	6.013768	5.58E-	8.82E-	10.18714
	68	95	45	09	07	4
LCN2	-	71.53338	-	5.62E-	8.83E-	10.17939
	66.65176		6.012277			
		66		09	07	5
	1		4			
UBC	-	772.2769	-	5.66E-	8.83E-	10.17361
	150.8749		6.011165			
		51		09	07	99
	9		9			
INPP4A	20.14154	62.35132	6.003863	5.89E-	9.14E-	10.13569
	75	29	88	09	07	89
PTBP3	43.07414	177.6835	5.991687	6.29E-	9.71E-	10.07254
	05	68	36	09	07	23
SMIM14	19.51749	57.03497	5.986888	6.46E-	9.89E-	10.04768
	48	49	76	09	07	02
CNOT1	46.57983	214.2411	5.986064	6.49E-	9.89E-	10.04341
	11	03	63	09	07	18
SIPA1L3	16.86095	48.50050	5.984392	6.55E-	9.91E-	10.03475
	44	63	08	09	07	07

---

---

PLEKHA2	29.19890	119.7031	5.983667	6.57E-	9.91E-	10.03099
	79	73	63	09	07	98
HIVEP2	22.50794	84.47583	5.976351	6.84E-	1.02E-	9.993139
	91	18	55	09	06	54
MITF	-	25.31524	-	7.09E-	1.06E-	9.958639
	19.65495		5.969678			
		34		09	06	07
	3		7			
CXCR5	7.607984	11.82921	5.966528	7.21E-	1.07E-	9.942360
	47	35	16	09	06	23
YWHAH	-	541.1320	-	7.49E-	1.10E-	9.906636
	385.3680		5.959609			
		18		09	06	13
	4		8			
UBE2N	11.94100	37.99630	5.947780	7.99E-	1.17E-	9.845626
	75	89	26	09	06	8
EP400	18.65531	53.55868	5.945698	8.08E-	1.18E-	9.834901
	71	09	73	09	06	2
TMEM131L	11.75486	30.03585	5.940417	8.31E-	1.20E-	9.807698
	38	87	03	09	06	98
CFL1	-	696.9775	-	8.60E-	1.24E-	9.775441
	203.4482		5.934149			
		84		09	06	81
	7		1			

---

---

	-		-			
		115.7604		8.68E-	1.24E-	9.766875
HIST1H2BD	71.44051		5.932483	09	06	76
		09				
	5		8			
	-		-			
		357.6325		8.70E-	1.24E-	9.765014
CD99	273.4153		5.932121	09	06	55
		06				
	4		9			
	-		-			
		24.01761		8.91E-	1.26E-	9.742135
C9orf3	12.89552		5.927671	09	06	1
		17				
	7		9			
	-		-			
		390.9038		9.05E-	1.27E-	9.727062
MYL12B	159.4971		5.924739	09	06	84
		57				
	6					
	-		-			
		23.55224		9.45E-	1.32E-	9.686575
PRELID2	16.65945	2	5.916855	09	06	9
	12.15649	38.27556	5.914679	9.56E-	1.33E-	9.675412
PDPK1				09	06	75
	2	56	84			
	8.504232	16.26495	5.914384	9.57E-	1.33E-	9.673895
YIPF4				09	06	53
	21	3	15			
	16.95972	25.88734	5.909079	9.85E-	1.36E-	9.646686
TMEM56				09	06	69
	83	37	53			

---

---

	-		-			
		2215.987		9.97E-	1.37E-	9.634956
MYL12A	1428.212		5.906791			
		89		09	06	14
	8		4			
	-					
		203.4164	-	1.01E-	1.37E-	9.625753
CDC37	73.59235					
		68	5.904996	08	06	97
	1					
	17.01526	58.28320	5.901526	1.03E-	1.39E-	9.607979
INO80D						
	96	19	87	08	06	63
	19.60325	67.61234	5.898082	1.05E-	1.41E-	9.590338
AKAP11						
	23	1	15	08	06	29
	10.88003	28.33425	5.897643	1.05E-	1.41E-	9.588093
DGKA						
	13	14	68	08	06	37
	81.31797	400.7686	5.895462	1.06E-	1.42E-	9.576929
9-Sep						
	53	48	86	08	06	61
	-		-			
		20.94630		1.08E-	1.44E-	9.555104
TCEAL3	10.62375		5.891197			
		62		08	06	62
	4		6			
	5.348955	8.072784	5.885940	1.12E-	1.48E-	9.528219
ADAM28						
	73	09	1	08	06	41
	-		-			
		47.20571		1.21E-	1.59E-	9.451593
GADD45A	27.01219		5.870935			
		99		08	06	96
	3		7			

---



---

	-		-			
		50.44112		1.22E-	1.59E-	9.446976
GOLIM4	23.79068		5.870030			
		43		08	06	04
	7		5			
	-		-			
		44.57615		1.24E-	1.61E-	9.428357
TAX1BP3	29.45268		5.866379			
		47		08	06	99
	3		9			
	16.98569	53.87415	5.865718	1.24E-	1.61E-	9.424983
DIP2B						
	95	49	08	08	06	85
	9.941564	31.42829	5.861068	1.28E-	1.64E-	9.401285
ARHGEF18						
	25	84	38	08	06	68
	9.351453	23.50494	5.855859	1.31E-	1.68E-	9.374755
PRR12						
	8	69	57	08	06	25
	36.38707	158.9954	5.839523	1.43E-	1.82E-	9.291667
CREBBP						
	9	9	35	08	06	78
	-		-			
		915.3361		1.44E-	1.82E-	9.285867
SERF2	663.8705		5.838381			
		44		08	06	52
	7		6			
	-		-			
		915.3361		1.44E-	1.82E-	9.285867
SERF2-	663.8705		5.838381			
C15ORF63		44		08	06	52
	7		6			

---

---

	-		-			
		16988.41		1.51E-	1.90E-	9.241820
ACTB	7647.221		5.829705			
		91		08	06	54
	1		5			
	20.72417	76.55500	5.826848	1.53E-	1.92E-	9.227328
SF3B3						
	22	5	72	08	06	05
	14.88827	55.93414	5.826150	1.54E-	1.92E-	9.223785
UBE2G2						
	42	24	24	08	06	56
	-		-			
		147.1534		1.56E-	1.93E-	9.213232
STK39	70.96537		5.824069			
		18		08	06	61
	6		1			
	-		-			
		1027.539		1.60E-	1.98E-	9.184127
TPM3	268.8988		5.818326			
		46		08	06	08
	4		2			
	12.48389	30.23188	5.812289	1.66E-	2.03E-	9.153554
TFEC						
	93	26	18	08	06	65
	12.95608	47.86656	5.804710	1.73E-	2.11E-	9.115211
SERTAD2						
	42	3	67	08	06	27
	-		-			
		198.7472		1.75E-	2.13E-	9.100137
UBE2Q2			5.801729			
	109.4206	89		08	06	38
			2			

---

---

	-		-			
		363.6010		1.79E-	2.16E-	9.081318
GPX4	193.4399		5.798005			
		56		08	06	82
	7		4			
	-		-			
		644.9756		1.80E-	2.16E-	9.076364
BIN2	294.4628		5.797024			
		74		08	06	29
	4		7			
	12.30523	48.03128	5.790516	1.86E-	2.23E-	9.043501
PHF12						
	17	63	58	08	06	64
	-		-			
		198.5907		1.95E-	2.32E-	9.001414
SERPINB1	85.37015		5.782173			
		08		08	06	01
	2		1			
	60.38281	282.5831	5.779907	1.97E-	2.34E-	8.989995
IKZF1						
	75	8	88	08	06	33
	41.98792	222.7229	5.777784	1.99E-	2.35E-	8.979293
SF3B1						
	67	82	26	08	06	86
	28.07779	136.0358	5.773369	2.04E-	2.39E-	8.957055
FOXN3						
	2	4	25	08	06	22
	28.38662	124.3125	5.773034	2.04E-	2.39E-	8.955371
KMT2A						
	51	69	85	08	06	39
	-		-			
		65.24652		2.11E-	2.47E-	8.922488
TIMMDC1	22.12665		5.766501			
		92		08	06	76
	1		5			

---

---

	-		-				
		518.1688		2.12E-	2.47E-	8.917713	
YWHAE	293.7490		5.765552				
		64		08	06	51	
	9		3				
	11.84975	26.20465	5.741106	2.42E-	2.78E-	8.794951	
POU2AF1							
	22	37	56	08	06	42	
	-		-				
		8.316905		2.42E-	2.78E-	8.794566	
MAOB	6.568000		5.741029				
		87		08	06	1	
	2		7				
	-		-				
		124.6542		2.49E-	2.85E-	8.767071	
VAMP7	69.92782		5.735543				
		72		08	06	65	
	9		4				
	8.243516	25.49028	5.734950	2.50E-	2.85E-	8.764102	
RAPGEF6							
	61	33	69	08	06	35	
	-		-				
		17.24710		2.53E-	2.87E-	8.752749	
FKBP1B	14.25935						
		69	5.732684	08	06	62	
	3						
	-		-				
		36.18948		2.54E-	2.88E-	8.747164	
STK3	18.58615		5.731568				
		39		08	06	07	
	6		5				
	-		-				
		11.24549		2.56E-	2.88E-	8.740166	
LSMEM1	10.66614		5.730170				
		55		08	06	15	
	2		7				

---

---

				-			
HIST1H2BJ	-	101.8565		5.728080	2.59E-	2.90E-	8.729704
	74.50867	63			08	06	89
				6			
UIMC1	-	247.0874		5.719315	2.71E-	3.03E-	8.685865
	166.9769	98			08	06	36
	9			3			
DEK	-	296.4314		5.710610	2.84E-	3.16E-	8.642379
	77.85507	94			08	06	99
	1			4			
ATP6V1E1	-	93.19295		5.704517	2.93E-	3.24E-	8.611972
	43.52202	81			08	06	74
				2			
GVINP1	22.91927	80.63542	5.703737		2.95E-	3.24E-	8.608082
	76	16	3		08	06	53
PTPRC	80.75856	163.3592	5.691883		3.14E-	3.44E-	8.549006
	58	08	31		08	06	24
CD27-AS1	-	11.46608		5.690749	3.15E-	3.44E-	8.543359
	9.656857	67			08	06	46
	6			2			
CTNNA1	-	133.0829		5.688783	3.19E-	3.47E-	8.533571
	31.64382	37			08	06	47
	1						

---

---

	-		-			
		2867.427		3.22E-	3.49E-	8.523146
ACTG1	628.0479		5.686688			
		92		08	06	48
	5		3			
	21.54523	105.4147	5.682035	3.30E-	3.56E-	8.500001
KDM2A						
	02	91	51	08	06	87
	6.073982	10.66788	5.679688	3.34E-	3.59E-	8.488331
DBP						
	01	53	32	08	06	78
	11.72362	35.58019	5.678767	3.36E-	3.59E-	8.483755
SMAD3						
	98	36	71	08	06	58
	-		-			
				3.44E-	3.65E-	8.461906
ARL13B	15.31598	32.45979	5.674370			
				08	06	74
	4		7			
	22.25856	106.6670	5.674083	3.44E-	3.65E-	8.460482
YLPM1						
	96	63	89	08	06	15
	144.8260	400.1001	5.671316	3.49E-	3.69E-	8.446738
MBNL3						
	8	8	61	08	06	96
	-		-			
		106.9324		3.51E-	3.69E-	8.441544
RSRC1	45.70960		5.670270			
		86		08	06	98
	8		5			
	-		-			
		57.56674		3.61E-	3.78E-	8.416225
SKA2	17.10137		5.665168			
		82		08	06	27
	9		7			

---

---

				-			
		- 489.2629			3.67E-	3.83E-	8.400480
EIF1	193.7068		9	5.661994	08	06	19
							3
		-					
		43.53431			3.77E-	3.91E-	8.375228
DPY30	19.55980		29	5.656900	08	06	3
		7					2
	23.52995	45.03307		5.655063	3.80E-	3.92E-	8.366129
NLRP1		99	3	75	08	06	16
	23.52995	45.03307		5.655063	3.80E-	3.92E-	8.366129
LOC728392		99	3	75	08	06	16
	44.63569	213.6384		5.654291	3.82E-	3.92E-	8.362305
PDCD4		4	45	97	08	06	86
	11.71263	33.64912		5.651221	3.88E-	3.97E-	8.347097
EBLN3P		48	01	05	08	06	14
		-					
		234.5108			4.12E-	4.17E-	8.290848
C12orf75	162.5922		21	5.639852	08	06	93
			6				
		-					
		86.47136			4.12E-	4.17E-	8.290812
H1F0	44.75562		52	5.639844	08	06	25
			9				6

---

---

	-		-			
		25.02605		4.12E-	4.17E-	8.289525
FUNDC1	15.96169	18	5.639584	08	06	76
	8		4			
	-		-			
		109.2648		4.27E-	4.30E-	8.255490
FAM192A	27.70819	46	5.632695	08	06	15
	8		9			
	-		-			
		66.63690		4.49E-	4.50E-	8.209206
ZCCHC2	22.51622	46	5.623317	08	06	94
	3		9			
	-		-			
		153.9256		4.59E-	4.59E-	8.188108
YWHAQ	50.01908	14	5.619038	08	06	59
	3		8			
	-		-			
		10.21184		4.78E-	4.76E-	8.149619
TOM1L1	8.280404	94	5.611226	08	06	76
	1					
	-		-			
		182.9146		4.84E-	4.79E-	8.138577
ITPRID2	58.37074	89	5.608983	08	06	81
	1					
	8.086550	13.28333	5.604632	4.95E-	4.89E-	8.117170
SERINC5	49	83	35	08	06	3
	16.21473	49.83996	5.598970	5.09E-	4.98E-	8.089331
SCRN1	36	51	61	08	06	19

---



---

MED13L	40.30035	187.2229	5.598727	5.10E-	4.98E-	8.088134
	4	01	15	08	06	58
GIGYF1	11.36543	24.15911	5.597824	5.12E-	4.98E-	8.083698
		07	59	08	06	89
SORL1	41.83258	72.06131	5.597821	5.12E-	4.98E-	8.083682
	54	41	34	08	06	91
GLA	25.00632	31.42441	5.596753	5.15E-	4.99E-	8.078434
	8	42	2	08	06	37
IL10RA	27.06284	42.66634	5.596109	5.17E-	4.99E-	8.075271
	16	56	47	08	06	31
AKIRIN2	68.57726	127.7115	-5.58842	5.38E-	5.18E-	8.037512
	3	95		08	06	83
FAM129C	7.043193	12.27191	5.579292	5.64E-	5.41E-	7.992744
	35	08	01	08	06	54
PLEK	181.2229	519.6519	5.570856	5.89E-	5.63E-	7.951425
	8		8	08	06	46
PHLPP2	6.457840	14.18524	5.567481	6.00E-	5.70E-	7.934907
	3	72	86	08	06	94

---

---

	-		-			
		103.3212		6.06E-	5.75E-	7.924396
HIST1H2BH	66.72308		5.565333			
		64		08	06	79
	9		4			
	31.84072	137.1570	5.560070	6.23E-	5.88E-	7.898662
SPEN						
	51	24	31	08	06	01
	18.47381	63.18283	5.558660	6.28E-	5.90E-	7.891770
PSD4						
	22	76	32	08	06	85
	-	698.9202	-	6.40E-	6.00E-	7.872797
CALM1			5.554776			
	165.3254	62		08	06	48
			7			
	9.919857	27.17173	5.553528	6.45E-	6.01E-	7.866701
RHOH						
	1	2	47	08	06	4
	-	169.6722	-	6.46E-	6.01E-	7.864158
LRRFIP2			5.553007			
	72.20279	52		08	06	09
	4		6			
	-	8416.295	-	6.50E-	6.02E-	7.859360
B2M			5.552025			
	6227.409	05		08	06	91
	4		1			
	18.21374	52.21030	5.551088	6.53E-	6.03E-	7.854786
RORA						
	74	81	2	08	06	97

---

---

	-		-			
		105.3372		6.59E-	6.06E-	7.846254
TMEM165	69.74945		5.549340			
		49		08	06	75
	1		1			
	-		-			
		162.6742		7.14E-	6.55E-	7.769616
ETFA	97.83862		5.533618			
		45		08	06	86
	7		9			
	18.23219	39.77938	5.529301	7.30E-	6.67E-	7.748602
ARL4A						
	77	34	87	08	06	35
	-		-			
		58.33231		7.40E-	6.74E-	7.735584
PCMT1	29.03300		5.526626			
		01		08	06	46
	4		2			
	-		-			
		52.57774		7.47E-	6.75E-	7.726449
TTC33	37.57257					
		96	5.524748	08	06	43
	5					
	-		-			
		49.73379		7.50E-	6.75E-	7.722742
SUPT4H1	19.46417		5.523985			
		26		08	06	47
	1		7			
	-		-			
		162.2246		7.51E-	6.75E-	7.721737
NDUFA6	102.7309					
		67	5.523779	08	06	55
	4					

---

---

	-		-			
		521.9376		7.54E-	6.75E-	7.718793
ALDOA	166.5896		5.523173			
		84		08	06	46
	7		5			
	-		-			
		16.07815		7.54E-	6.75E-	7.718255
ARG2	13.75050		5.523062			
		69		08	06	45
	3		9			
	16.09133	68.08893	5.521868	7.59E-	6.75E-	7.712447
ZNF592						
	85	57	22	08	06	81
	-		-			
		58.31055		7.61E-	6.75E-	7.709412
MTRNR2L2	63.89955		5.521243			
		32		08	06	7
	3		8			
	-		-			
		61.60871		7.62E-	6.75E-	7.708510
ZFPM2	53.53639		5.521058			
		86		08	06	65
	3		2			
	16.18088	60.93909	5.518021	7.74E-	6.83E-	7.693751
CELF1						
	38	04	04	08	06	82
	31.87568	123.7936	5.511958	7.98E-	7.02E-	7.664312
PRRC2A						
	28	94	85	08	06	79
	20.84708	38.19879	5.511235	8.01E-	7.02E-	7.660802
IGF2R						
	14	1	55	08	06	08
	12.37138	39.36225	5.506851	8.19E-	7.16E-	7.639530
TBC1D9						
	7	74	41	08	06	35

---

---

				-			
	-	86.14116			8.24E-	7.16E-	7.634108
MSANTD3	57.67481	71	5.505733		08	06	99
				6			
	-			-			
		731.7515			8.25E-	7.16E-	7.633586
H3F3A	356.8801	36	5.505625		08	06	62
	4			9			
	9.601353	22.71500	5.504763	8.28E-	7.16E-	7.629404	
WDR81	83	72	58	08	06	99	
	105.1447	484.8689	5.504058	8.31E-	7.17E-	7.625984	
RPS7	39	5	21	08	06	87	
	109.4377	319.5804	5.498263	8.56E-	7.36E-	7.597902	
RNF213	47	16	8	08	06	79	
	45.42346	188.0153	5.495333	8.69E-	7.44E-	7.583708	
DOCK2	22	9	11	08	06	49	
	-			-			
		8259.371			8.83E-	7.54E-	7.568469
TMSB4X	5812.747	82	5.492185		08	06	6
	5			3			
	26.42797	106.9144	5.488345	9.01E-	7.66E-	7.549889	
USP24	95	87	45	08	06	42	
	-			-			
		219.6453			9.06E-	7.68E-	7.544404
LAMTOR1	123.6794	73	5.487211		08	06	27
	1			4			

---

---

	-		-			
		226.1083		9.12E-	7.71E-	7.537788
DYNLRB1	149.6332		5.485843			
		03		08	06	17
	1		4			
	-		-			
		46.13927		9.20E-	7.75E-	7.530451
ARMCX6	30.20704		5.484325			
		36		08	06	37
	5		9			
	-		-			
		133.9177		9.32E-	7.83E-	7.517481
BRK1	63.60809		5.481642			
		88		08	06	5
	5		7			
	6.391271	7.724004	5.478183	9.49E-	7.94E-	7.500768
TUBGCP6						
	45	68	38	08	06	41
	12.20298	38.70637	5.477283	9.53E-	7.95E-	7.496421
KHNYN						
	27	2	27	08	06	06
	-		-			
		76.10392		9.69E-	8.06E-	7.480546
CEP70	39.24869		5.473995			
		11		08	06	06
	4		4			
	14.11366	40.03279	5.472016	9.79E-	8.12E-	7.470995
CLEC2D						
	27	09	55	08	06	07
	14.83201	19.01373	5.469772	9.91E-	8.18E-	7.460165
PER1						
	5	92	03	08	06	31

---

---

	-		-			
		29.07857		1.03E-	8.51E-	7.420063
UBE2Q2P1	15.09555		5.461454			
		73		07	06	75
	8		4			
	12.92273	37.01403	5.453425	1.08E-	8.84E-	7.381400
MAP4K1						
	79	54	44	07	06	72
	-		-			
C7orf55-		148.1306		1.08E-	8.86E-	7.376208
LUC7L2	70.67961		5.452346			
		85		07	06	63
	5		5			
	-		-			
		10.51247		1.09E-	8.93E-	7.365834
MAP1LC3B2	8.718859		5.450190			
		92		07	06	22
	3		1			
	-		-			
		72.05788		1.11E-	8.99E-	7.355711
CHD1L	35.30308		5.448085			
		6		07	06	2
	5		4			
	45.59903	233.4192	5.447573	1.11E-	8.99E-	7.353250
DDX17						
	7	62	61	07	06	34
	-		-			
		60.56646		1.12E-	9.05E-	7.343877
DBN1	30.20402		5.445624			
		66		07	06	59
	4		1			
	18.09470	47.97868	5.439645	1.15E-	9.30E-	7.315152
CD22						
	66	02	79	07	06	13

---

---

ALDH5A1	9.029902	18.18522	5.438252	1.16E-	9.34E-	7.308459
	9	51	1	07	06	16
	-					
GNAS	789.7238	1382.821	5.435996	1.18E-	9.42E-	7.297628
	4	16	3	07	06	94
DOCK9	13.30802	40.43222	5.434116	1.19E-	9.48E-	7.288605
	75	81	24	07	06	59
DYNC1H1	43.45226	174.0567	5.431825	1.20E-	9.56E-	7.277615
	6	61	62	07	06	05
PRAG1	7.174079	12.54117	5.425689	1.24E-	9.83E-	7.248194
	19	02	98	07	06	23
	-					
SLTM	109.3424	323.4178	-	1.27E-	1.00E-	7.228415
	1	74	5.421562	07	05	5
POU2F2	17.21016	56.88197	5.415952	1.30E-	1.03E-	7.201556
	38	49	37	07	05	83
	-					
CNTLN	65.10933	111.0344	5.414000	1.32E-	1.03E-	7.192216
	3	65	4	07	05	06
DRAM2	9.484819	23.76551	5.412124	1.33E-	1.03E-	7.183244
	95	61	93	07	05	15

---



---

	-		-			
		512.8380		1.33E-	1.03E-	7.183037
CORO1C	304.5066		5.412081			
		28		07	05	58
	6		7			
	-		-			
		60.42786		1.33E-	1.03E-	7.180754
MCU	40.77963		5.411604			
		64		07	05	22
	5		4			
	-		-			
		1777.175		1.33E-	1.03E-	7.180518
TAGLN2	1207.662		5.411555			
		76		07	05	97
	5		2			
	-		-			
		72.97656		1.34E-	1.04E-	7.175081
SLBP	20.61106		5.410418			
		07		07	05	04
	4		1			
	-		-			
		314.9215		1.35E-	1.04E-	7.166048
HIST1H3H	221.0037		5.408529			
		74		07	05	93
	5		1			
	14.32959	15.59355	5.406979	1.36E-	1.05E-	7.158639
SPOCK2						
	68	31	07	07	05	86
	193.2909	775.2404	5.406936	1.36E-	1.05E-	7.158437
RPL10						
	49	87	77	07	05	68
	-		-			
		67.49644		1.37E-	1.05E-	7.151184
GSTO1	31.83255					
		79	5.405419	07	05	35
	3					

---

---

EIF3H	39.31843	219.3485	5.405007	1.38E-	1.05E-	7.149219
	95	4	83	07	05	62
C16orf72	18.36143	77.51214	5.401947	1.40E-	1.06E-	7.134599
	8	2	32	07	05	45
STRADB	53.44434	117.3679	5.397515	1.43E-	1.08E-	7.113440
	63	23	48	07	05	29
STAT6	20.55039	97.81823	5.397300	1.43E-	1.08E-	7.112412
	39	61	17	07	05	67
SYNRG	14.46752	62.42518	5.397194	1.43E-	1.08E-	7.111908
	84	21	51	07	05	41
SETBP1	13.33863	44.67881	5.386364	1.51E-	1.14E-	7.060265
	95	71	85	07	05	27
ADAM9	-	65.72785	-	1.54E-	1.16E-	7.040773
	45.49175	49	5.382272	07	05	94
	8		9			
LZIC	-	88.07519	-	1.57E-	1.17E-	7.027792
	46.92964	86	5.379546	07	05	41
	5		2			
RAB8A	-	431.0514	-	1.60E-	1.19E-	7.009111
	175.4420	1	5.375620	07	05	24
	7		4			

---

---

CYTH1	27.61614	127.5798	5.375350	1.60E-	1.19E-	7.007827
	94	2	55	07	05	72
	-					
FRMD3	137.0930	176.1003	-	1.62E-	1.20E-	6.993234
	1	37	5.372282	07	05	27
P2RX5	5.037168	10.43622	5.370422	1.64E-	1.21E-	6.984396
	63	84	93	07	05	13
MAP1B	36.25416	61.65352	5.365990	1.68E-	1.23E-	6.963335
	5	16	7	07	05	31
BEX4	8.410037	17.27426	5.363392	1.70E-	1.25E-	6.950995
	2	74	4	07	05	24
UXS1	142.1357	202.8162	5.362511	1.71E-	1.25E-	6.946814
	9	16	9	07	05	43
GRK4	8.531460	10.72029	5.361429	1.71E-	1.25E-	6.941677
	1	93	7	07	05	04
NAPA	24.98589	77.82471	5.359997	1.73E-	1.26E-	6.934878
	1	18	3	07	05	32

---

---

			-			
	-	89.16635		1.73E-	1.26E-	6.931955
GMPR	56.01256	06	5.359381	07	05	13
			4			
			-			
	-	50.51213		1.77E-	1.28E-	6.910561
COMMD7	22.05322	03	5.354871	07	05	88
			7			
			-			
	-	18.99739		1.78E-	1.28E-	6.905603
CCT6P1	14.02715	52	5.353825	07	05	1
	2		9			
			-			
	-	268.2909		1.78E-	1.28E-	6.905497
GFI1B	185.4783	87	5.353803	07	05	99
	5		8			
			-			
	7.236493	18.08101	5.352666	1.79E-	1.29E-	6.900106
RUNX2	75	84	49	07	05	06
	-	74.39386		1.81E-	1.29E-	6.891928
STAU2	39.17620	66	5.350941	07	05	86
	3		3			
			-			
	-	89.89711		1.83E-	1.30E-	6.881443
VAMP3	29.60996	77	5.348728	07	05	49
	3		6			
			-			
	29.64776	97.05691	5.345816	1.85E-	1.32E-	6.867650
ITGAL	01	12	72	07	05	63

---

---

	-		-			
		412.7590		1.86E-	1.32E-	6.867098
PDLIM1	258.6096		5.345700			
		91		07	05	79
	8		2			
	-		-			
		105.9870		1.92E-	1.36E-	6.834920
PTTG1IP	57.44577		5.338901			
		64		07	05	12
	7		7			
	-		-			
		62.51937		1.94E-	1.37E-	6.824664
SERPINB6	17.46761		5.336733			
		38		07	05	93
	7		5			
	-		-			
		80.60727		2.06E-	1.45E-	
SNRPN	39.42112		5.324399			6.766388
		46		07	05	
	2		1			
	-		-			
		382.8860		2.07E-	1.45E-	6.765623
RAB6A	152.8059		5.324237			
		08		07	05	99
	3		3			
	-		-			
		30.70456		2.11E-	1.48E-	6.746579
HIST2H4B	14.17995		5.320201			
		3		07	05	53
	8		3			
	-		-			
		6425.098		2.12E-	1.48E-	6.739346
PPBP	5661.465		5.318667			
		03		07	05	27
	3		8			

---

---

		-	-			
		1438.594		2.17E-	1.51E-	6.720631
OST4	1233.133		5.314698			
		32		07	05	89
		8		5		
		-	-			
		16.09468		2.20E-	1.53E-	6.705738
FAH	11.41318		5.311537			
		03		07	05	79
		4		9		
		-	-			
		246.4510		2.21E-	1.53E-	6.702321
DYNLL1	143.9098		5.310812			
		56		07	05	67
		7		5		
		-	-			
		19.44043		2.21E-	1.53E-	6.701253
VEGFC	12.21076		5.310585			
		3		07	05	74
		8		8		
		-	-			
		320.5914		2.23E-	1.54E-	6.693151
CDC42	95.96517		5.308865			
		76		07	05	63
		1		5		
		-	-			
		58.54978		2.30E-	1.58E-	6.665057
CCZ1	14.88696		5.302896			
		52		07	05	98
		3		9		
		-	-			
		204.9733		2.31E-	1.58E-	6.661072
11-Sep	123.0694		5.302049			
		18		07	05	92
		1		9		

---

---

	-		-			
		83.82169		2.32E-	1.58E-	6.656908
FAM32A	27.84626		5.301164			
		01		07	05	73
	9		6			
	-		-			
		96.50318		2.32E-	1.58E-	6.655345
FGD4	45.60482		5.300832			
		56		07	05	1
	4		1			
	-		-			
		29.63576		2.34E-	1.59E-	6.647512
PLA2G4A	18.79426		5.299166			
		04		07	05	93
	4		7			
	-		-			
		218.0408		2.36E-	1.60E-	6.640052
MIER1	66.77641		5.297579			
		58		07	05	88
	3		9			
	38.62217	170.6112	5.296455	2.37E-	1.61E-	6.634767
HNRNPH1						
	2	04	61	07	05	95
	-		-			
		70.15720		2.46E-	1.66E-	6.600623
CHMP5	19.79927		-			
		76	5.289187	07	05	51
	5					
	54.84152	294.1492	5.288866	2.46E-	1.66E-	6.599120
IQGAP1						
	11	83	85	07	05	66
	-		-			
		77.12480		2.51E-	1.68E-	6.583546
TMEM40	60.12752		5.285548			
		67		07	05	01
	4		5			

---

---

	-		-			
		46.52039		2.54E-	1.70E-	6.570019
HIST1H2BG	23.95118		5.282665			
		94		07	05	57
	5		1			
	-		-			
		31.02389		2.56E-	1.71E-	6.562360
ACTR3B	21.80708		5.281031			
		85		07	05	44
	2		9			
	-		-			
		676.5008		2.64E-	1.76E-	6.535163
CAP1	165.3018	09	5.275229			
			1	07	05	65
	-		-			
		169.8688		2.66E-	1.76E-	6.528177
PROKR1	109.1778		5.273737			
		46		07	05	87
	8		7			
	-		-			
		169.8688		2.66E-	1.76E-	6.528177
APLF	109.1778		5.273737			
		46		07	05	87
	8		7			
	15.15287	60.09847	5.266345	2.76E-	1.82E-	6.493576
OXA1L						
	19	41	83	07	05	32
	-		-			
		76.02568		2.81E-	1.85E-	6.474188
UPF3A	27.72904		5.262200			
		49		07	05	61
			3			

---



---

	-		-			
		62.88748		2.92E-	1.92E-	6.437749
H2AFJ	37.91232		5.254401			
		93		07	05	53
	5		7			
	-		-			
		106.8636		2.96E-	1.94E-	6.425853
PDGFA			5.251853			
	78.10604	16		07	05	63
			7			
	5.129859	8.781996	5.250502	2.98E-	1.95E-	6.419549
SLC7A6						
	31	47	94	07	05	3
	-		-			
		257.1569		3.09E-	2.01E-	6.386522
GABARAPL2	110.3481		-			
		19	5.243422	07	05	19
	7					
	-		-			
		49.99494		3.12E-	2.03E-	6.377168
PPP1R14A	34.72063		5.241415			
		82		07	05	77
	9		3			
	-		-			
		437.1138		3.23E-	2.10E-	6.342634
ARF1	189.6676		5.234000			
		01		07	05	41
	2		5			
	-		-			
		395.7322		3.24E-	2.10E-	6.342182
CMPK1	178.4946		5.233903			
		88		07	05	75
	6		5			

---

---

	-		-			
		297.2146		3.24E-	2.10E-	6.340053
HIST2H2BE	194.9430		5.233445			
		66		07	05	08
	9		9			
	-		-			
		1268.255		3.42E-	2.20E-	6.290549
ARHGDIB	463.5832		5.222801			
		82		07	05	94
	2		3			
	-		-			
		94.22930		3.45E-	2.22E-	6.281637
RAB11B	39.39401		-			
		57	5.220883	07	05	88
	7					
	-		-			
		64.66232		3.49E-	2.24E-	6.269687
BANP	19.58477		-5.21831			
		79		07	05	83
	6					
	10.51720	30.98038	5.216285	3.53E-	2.26E-	6.260286
HERC3						
	15	78	06	07	05	82
	20.61102	93.88796	5.212832	3.59E-	2.29E-	6.244265
ILF3						
	39	69	73	07	05	78
	-		-			
		42.82128		3.62E-	2.30E-	6.237584
FANCL	23.33921		5.211392			
		37		07	05	87
	5		5			
	-		-			
		27.99354		3.62E-	2.30E-	6.236658
ACER2	21.33939		5.211192			
		81		07	05	57
	2		8			

---

---

	-		-			
		547.0964		3.71E-	2.35E-	6.214422
PGRMC1	418.1494		5.206396			
		24		07	05	12
	2		8			
	-	21.97865	-	3.74E-	2.36E-	6.206576
PLEKHA8P1			5.204703			
	14.13834	95		07	05	33
			7			
	5.289418	8.727085	5.204377	3.74E-	2.36E-	6.205066
ALDH6A1						
	62	61	91	07	05	8
	-		-			
		694.9870		3.76E-	2.36E-	6.200672
PTPN12	400.4885		5.203429			
		2		07	05	47
	3		4			
	9.261439	27.87967	5.202832	3.77E-	2.37E-	6.197906
ZHX2						
	27	3	27	07	05	4
	21.01204	81.28125	5.200966	3.81E-	2.38E-	6.189265
HCFC1						
	9	68	52	07	05	35
	-		-			
		494.0841		3.83E-	2.39E-	6.184039
PAIP2	249.3265		5.199837			
		47		07	05	49
	6		9			
	41.77637	159.2506	5.199219	3.84E-	2.39E-	6.181177
FMNL1						
	47	95	79	07	05	85

---

---

	-						
		145.0043		-	3.88E-	2.41E-	6.171287
EPSTI1	60.53157		39	5.197083	07	05	21
	8						
		11.83055	27.50276	5.196714	3.89E-	2.41E-	6.169581
DIP2A		1	1	41	07	05	69
	-						
		60.23907			3.98E-	2.46E-	6.145939
C9orf16	32.05126			5.191603			
		85			07	05	21
	8			3			
	-						
		347.7386			4.03E-	2.48E-	6.136220
SNX3	120.5036			5.189501			
		4			07	05	59
	7			2			
	-						
		18.05895			4.03E-	2.48E-	6.135412
UNC13B	8.841867			5.189326			
		42			07	05	09
	5			2			
	-						
		45.61167			4.06E-	2.49E-	6.128775
PDLIM7	21.20555			5.187890			
		19			07	05	49
	8			3			
		16.01236	49.80902	5.182328	4.17E-	2.54E-	6.103083
SBF1		98	81	26	07	05	97
	-						
		321.0149			4.18E-	2.54E-	6.101540
SCLT1				5.181993			
	173.1281	31			07	05	24
				9			

---

---

RALGAPB	13.01277	49.76567	5.181265	4.19E-	2.54E-	6.098176
	49	23	22	07	05	25
	-	-	-	-	-	-
TPM4	942.6205	1794.317	5.180976	4.20E-	2.54E-	6.096843
	9	01	6	07	05	93
	-	-	-	-	-	-
HIST2H4A	14.41730	31.30922	5.180835	4.20E-	2.54E-	6.096194
	7	82	8	07	05	03
	-	-	-	-	-	-
ACRBP	166.3964	220.9322	5.180665	4.20E-	2.54E-	6.095405
	6	14	1	07	05	94
	-	-	-	-	-	-
RHEB	32.10756	62.15338	5.177424	4.27E-	2.57E-	6.080451
	1	23	4	07	05	46
	-	-	-	-	-	-
SQSTM1	49.94658	174.6102	5.177225	4.28E-	2.57E-	6.079532
	3	41	3	07	05	53
	-	-	-	-	-	-
TADA3	22.14841	87.03199	5.173987	4.34E-	2.61E-	6.064599
	2	33	6	07	05	94

---

---

	-		-			
		145.5630		4.38E-	2.63E-	6.056794
VDAC3	84.90980		5.172294			
		83		07	05	13
	9		5			
		63.10926	5.169775	4.43E-	2.65E-	6.045186
WASHC4	15.47367					
		72	96	07	05	73
	-		-			
		1097.616		4.45E-	2.66E-	6.040940
CALM3	653.3919		5.168854			
		79		07	05	11
	7		3			
	4.874314	9.461663	5.165291	4.53E-	2.70E-	6.024528
SEMA7A						
	12	4	11	07	05	49
	6.930820	9.131231	5.161704	4.61E-	2.74E-	6.008019
KLK1						
	95	8	83	07	05	85
	3.121802	3.301400	5.159934	4.65E-	2.76E-	5.999872
AGPAT4						
	95	83	22	07	05	72
	9.579519	25.09539	5.159447	4.66E-	2.76E-	5.997632
ZNF107						
	56	37	28	07	05	59
	34.10271	173.6390	5.156704	4.73E-	2.79E-	5.985018
SNRNP200						
	18	49	7	07	05	66
	8.858657	24.94150		4.85E-	2.85E-	5.961252
TRAF5			5.151534			
	23	76		07	05	14

---

---

	-		-			
		128.1964		4.86E-	2.85E-	5.958916
CDK2AP1	75.63505		5.151025			
		9		07	05	72
	7		7			
	18.78452	69.18497	5.149585	4.89E-	2.87E-	5.952300
SPATA13						
	26	18	43	07	05	82
	-		-			
		39.21745		4.98E-	2.91E-	5.935709
GRB10	14.39119		5.145972			
		03		07	05	33
	9		1			
	-		-			
		41.31819		4.99E-	2.91E-	5.934012
CYTOR	26.81831		5.145602			
		8		07	05	03
	7		3			
		82.87198	5.144212	5.02E-	2.92E-	5.927632
PARP8	19.53196					
		14	28	07	05	27
	6.877135	18.31805	5.143111	5.05E-	2.93E-	5.922579
PTPN23						
	23	4	24	07	05	96
	-		-			
		15.27614		5.16E-	2.99E-	5.903207
PKD2	7.864886		5.138887			
		49		07	05	4
	8		6			
	22.29518	73.50313	5.137794	5.18E-	3.00E-	5.898193
TRANK1						
	64	74	15	07	05	98

---

---

	-		-			
		21.51496		5.41E-	3.12E-	5.858491
FAR2	9.799684		5.129127			
		6		07	05	88
	3		8			
	-		-			
		273.9843		5.44E-	3.13E-	5.852919
MAP1LC3B	150.9488		5.127910			
		52		07	05	02
	2		4			
	6.724989	15.09138	5.126615	5.47E-	3.14E-	5.846994
TECPR1						
	3	36	81	07	05	19
	-		-			
		69.00841		5.49E-	3.14E-	5.844710
STRAP	21.00486		5.126116			
		06		07	05	49
	6		7			
	-		-			
		45.48049		5.52E-	3.15E-	5.838111
MTFR1L	26.10808		5.124674			
		99		07	05	27
	7		4			
	4.999466	8.708249	5.124446	5.53E-	3.15E-	5.837070
LY9						
	19	22	79	07	05	15
	13.19929	56.06966	5.120852	5.63E-	3.20E-	5.820631
MEF2D						
	53	67	36	07	05	99
	-		-			
		249.7428		5.78E-	3.28E-	5.794995
AP2M1	83.01453		5.115242			
		35		07	05	05
	7		3			

---



---

PCMTD2	12.61038	41.15246	5.111789	5.88E-	3.33E-	5.779228
	61	08	64	07	05	41
	-					
GNG11	262.8668	370.4822	5.111102	5.90E-	3.34E-	5.776090
	8	2	3	07	05	93
ZNF106	35.05043	179.3160	5.109761	5.94E-	3.35E-	5.769969
	36	98	19	07	05	65
	-					
PYGL	61.04174	116.9107	5.109236	5.95E-	3.35E-	5.767573
	2	12	1	07	05	2
	-					
ACOT7	9.773970	16.75889	5.108290	5.98E-	3.36E-	5.763260
	4	88	8	07	05	08
TAGAP	18.99691	80.10640	5.106489	6.03E-	3.38E-	5.755040
	37	83	08	07	05	6
RPS14	55.69478	264.8355	5.101918	6.17E-	3.45E-	5.734200
	18	44	56	07	05	77
	-					
IKBKG	23.41347	45.42206	5.101125	6.19E-	3.45E-	5.730587
	5	69	7	07	05	11

---

---

	-		-			
		675.7248		6.19E-	3.45E-	5.730278
RGS10	540.3204		5.101058			
		42		07	05	93
	7		1			
	-		-			
		1143.764		6.25E-	3.47E-	5.722008
SH3BGRL	764.0710		5.099243			
		78		07	05	92
	9		1			
	-		-			
		509.6599		6.31E-	3.50E-	5.712275
HIST1H2BK	371.6633		5.097106			
		51		07	05	85
	2		4			
	-		-			
		803.7824		6.40E-	3.54E-	5.699915
OAZ1	311.3635		5.094391			
		24		07	05	04
	3		7			
	11.51935	42.21758	5.093954	6.41E-	3.54E-	5.697926
MED12						
	16	06	85	07	05	18
	-		-			
		78.96848		6.50E-	3.58E-	5.684117
NEK1	34.50807		5.090920			
		35		07	05	64
	7		6			
	3.250637	4.541285	5.090541	6.52E-	3.58E-	5.682394
ATP6V0E2						
	85	59	93	07	05	76
	-		-			
		96.57294		6.52E-	3.58E-	5.681913
DNAJC3	55.96323		5.090436			
		05		07	05	48
	6		1			

---

---

	-		-			
		116.3902		6.54E-	3.58E-	5.678821
PARD3	80.43651		5.089756			
		6		07	05	43
	8		5			
	371.0236	1900.053	5.087389	6.62E-	3.61E-	5.668055
EEF2						
	45	38	38	07	05	83
	-	105.0785		6.66E-	3.63E-	5.661846
SVIP			5.086023			
	63.21727	88		07	05	5
			7			
	-		-			
		37.22377		6.74E-	3.67E-	5.650295
C12orf76	25.64409		5.083482			
		93		07	05	81
	9		4			
	-		-			
		2078.758		6.80E-	3.69E-	5.643035
CCL5	1456.648		5.081884			
		02		07	05	46
	1		5			
	8.295259	22.52879	5.080359	6.85E-	3.71E-	5.636107
ZKSCAN8						
	58	76	48	07	05	87
	31.84956	35.30639	5.078146	6.92E-	3.74E-	5.626059
NOTCH2						
	65	96	73	07	05	43
	-		-			
		36.94437		7.15E-	3.85E-	5.595072
TMEM91	25.12433		5.071318			
		6		07	05	34
	7		1			

---

---

	-		-			
		458.5830		7.16E-	3.85E-	5.594276
APP	330.9594		5.071142			
		83		07	05	39
	9		6			
	-		-			
				7.22E-	3.87E-	5.585767
ARHGAP10	107.5431	150.9534	5.069266			
				07	05	8
			2			
	-		-			
		70.58921		7.22E-	3.87E-	5.585692
SDCCAG8	24.89531		5.069249			
		53		07	05	15
	9		5			
	-		-			
		120.5112		7.29E-	3.90E-	5.576290
FLOT1	34.56739		5.067175			
		76		07	05	32
	4		4			
	9.292168	30.48683	5.066480	7.32E-	3.90E-	5.573142
UFL1						
	29	96	87	07	05	87
	8.879610	24.41114	5.066312	7.32E-	3.90E-	5.572381
ZBTB40						
	99	11	86	07	05	5
	-		-			
		736.9235		7.35E-	3.90E-	5.568917
MAN1A2	357.5818		5.065548			
		16		07	05	85
	6		5			
	7.081139	17.78094	5.065389	7.36E-	3.90E-	5.568196
DDOST						
	38	09	33	07	05	79

---

---

	-		-			
		83.34858		7.45E-	3.94E-	5.556547
TMED2	25.42586		5.062817			
		14		07	05	47
	4		7			
	-		-			
		6.780509		7.48E-	3.94E-	5.553203
NCK1-DT	5.061901		5.062079			
		85		07	05	27
	9		3			
	7.939223	23.95460	5.061871	7.48E-	3.94E-	5.552264
AUTS2						
	4	67	98	07	05	67
	25.30234	25.04756	5.057028	7.66E-	4.03E-	5.530339
TTN						
	75	46	2	07	05	44
	-		-			
		360.4892		7.69E-	4.04E-	5.526236
YY1AP1	123.0667		5.056121			
		44		07	05	86
	5		4			
	9.848301	25.70075	5.055624	7.71E-	4.04E-	5.523988
WDFY2						
	35	21	36	07	05	2
	-		-			
		15.28752		7.75E-	4.05E-	5.519324
LINC00534	13.24934		5.054593			
		87		07	05	91
	1		4			
	-		-			
		49.42410		7.84E-	4.09E-	5.508910
OSBPL2	11.72107		5.052290			
		98		07	05	98
	8		5			

---

---

	-		-			
		95.07411		7.87E-	4.10E-	5.504980
TMEM140	70.85886		5.051421			
		57		07	05	91
	4		1			
	13.28403	47.03185	5.050415	7.91E-	4.11E-	5.500436
KIAA0040						
	56	93	87	07	05	98
	10.33169	31.04082	5.047315	8.02E-	4.16E-	5.486429
BRD1						
	84	36	86	07	05	23
	-		-			
		288.8807		8.03E-	4.16E-	5.485785
GP1BB	217.4515		5.047173			
		06		07	05	72
	2		4			
	-		-			
		84.24260		8.05E-	4.16E-	5.483153
DOK2			5.046590			
	30.10362	79		07	05	7
			7			
	-		-			
		67.97068		8.07E-	4.16E-	5.481380
PCYT1B	53.04552		5.046198			
		04		07	05	97
	1		3			
	73.40943	270.6257	5.039969	8.31E-	4.28E-	5.453263
HLA-DRA						
	8	56	65	07	05	05
	-		-			
				8.33E-	4.28E-	5.450797
AGPAT1	80.00082	136.7633	5.039423			
				07	05	14
	9		1			

---

---

	-		-			
		78.21266		8.35E-	4.28E-	5.448727
G6PD	25.18009		5.038964			
		59		07	05	29
	4		3			
	-		-			
		32.74970		8.47E-	4.33E-	5.435503
PDGFC	23.14802		5.036032			
		52		07	05	12
	7		2			
	-		-			
		34.10154		8.48E-	4.33E-	5.434026
PLOD2	21.69586		5.035704			
		03		07	05	44
	3		7			
	-		-			
		66.96709		8.51E-	4.34E-	5.431134
ASPH	37.07890		5.035063			
		2		07	05	86
	4		4			
	-		-			
		50.46373		8.61E-	4.38E-	5.419690
SMIM5	36.84712		5.032524			
		07		07	05	71
	4		4			
	7.321960	23.61389	5.031101	8.67E-	4.40E-	5.413277
MNT						
	58	74	14	07	05	58
	-		-			
		419.9900		8.76E-	4.44E-	5.403965
NEXN	331.6312		5.029033			
		65		07	05	23
	8		9			
	7.153203	18.45367	5.027650	8.82E-	4.46E-	5.397736
ZNF460						
	18	05	83	07	05	97

---

---

	-		-			
		243.7356		8.85E-	4.46E-	5.394407
EPS15	53.59866		5.026911			
		26		07	05	94
	4		5			
	-		-			
		119.5832		8.98E-	4.51E-	5.381078
SNX6	34.51847		5.023950			
		78		07	05	64
	1		2			
	-		-			
		796.2344		8.99E-	4.51E-	5.379829
RAB11A	529.6732		5.023672			
		94		07	05	03
	9		5			
	-		-			
		796.2344		8.99E-	4.51E-	5.379829
LOC10537086	529.6732		5.023672			
6		94		07	05	03
	9		5			
	-		-			
		22.58032		9.08E-	4.55E-	5.370084
LGALS12	16.09125		5.021506			
		54		07	05	05
	3		5			
	15.16911	72.52690	5.016312	9.31E-	4.65E-	5.346729
NUP214						
	39	22	42	07	05	89
	-		-			
		218.3784		9.35E-	4.66E-	5.342749
CALD1	115.4130		5.015426			
		73		07	05	62
	9		7			
	30.65674	189.0752	5.013285	9.44E-	4.70E-	5.333131
EIF4A2						
	54	66	93	07	05	09

---



---

		-		-			
		-	157.2653		9.58E-	4.76E-	5.320019
MAP3K5	84.74899		84	5.010366	07	05	84
				5			
		-	50.03580		9.60E-	4.76E-	5.317902
KIFAP3	27.64551		37	5.009895	07	05	73
		1					
		-	12.37894		9.64E-	4.77E-	5.313991
LAPTM4B	9.241047		32	5.009023	07	05	61
		9		7			
		-	544.3489		9.67E-	4.77E-	5.310885
GPX1	360.4475		2	5.008331	07	05	99
		8		9			
		-	192.5432		9.68E-	4.77E-	5.310454
ILK	103.7269		11	5.008235	07	05	73
		2		8			
		-	240.2881		9.75E-	4.79E-	5.302854
SHOC2	116.7240		27	5.006542	07	05	76
		2		3			
		-	28.50688		9.75E-	4.79E-	5.302809
MYOM1	19.76169		92	5.006532	07	05	05
		6		1			

---



---

	-		-			
		171.5841		1.05E-	5.06E-	5.233055
RANBP9	71.41239		4.990966			
		91		06	05	54
	5		5			
	-		-			
		252.3866		1.06E-	5.09E-	5.225111
PTK2	129.1301		4.989191			
		59		06	05	58
	4		3			
	-		-			
		122.0613		1.06E-	5.10E-	5.221758
NFE2	52.45307		4.988441			
		17		06	05	58
	4		8			
	-		-			
		55.71021		1.07E-	5.14E-	5.213158
ACTR10	26.13579		4.986519			
		25		06	05	95
	7		2			
	-		-			
		25.24588		1.07E-	5.14E-	5.212289
PLCB4	13.82731		4.986324			
		68		06	05	59
	2		8			
	-		-			
		642.9889		1.10E-	5.23E-	5.192813
WDR1	272.4981		4.981968			
		17		06	05	75
	3		1			
	11.53503	33.93197	4.981145	1.10E-	5.24E-	5.189138
TEP1						
	85	22	61	06	05	48
	16.56666	63.96185	4.978726	1.11E-	5.30E-	5.178331
FAM53B						
	81	67	35	06	05	18

---

---

	-		-			
		492.6184		1.13E-	5.36E-	5.165775
GNB1	99.91044		4.975914			
		15		06	05	58
	1		5			
	-		-			
		66.90132		1.15E-	5.46E-	5.144487
ATP6V0E1	32.29758		4.971143			
		66		06	05	11
	7		9			
	-		-			
		64.12734		1.15E-	5.46E-	5.144452
LARP1B	33.65803		-			
		89	4.971136	06	05	18
	9					
	-		-			
		22.34056		1.16E-	5.47E-	5.140341
MSANTD3-	15.20282		4.970214			
TMEFF1		82		06	05	27
	2		4			
	9.470666	30.89059	4.963068	1.20E-	5.65E-	5.108489
EPC1		65	04	39	06	05
						9
	-		-			
		204.0513		1.20E-	5.65E-	5.107361
TRAPPC1	140.3481		4.962815			
		76		06	05	5
	1		1			
	-		-			
		9.205688		1.22E-	5.71E-	5.095176
AP1M2	7.546485		4.960078			
		28		06	05	49
	9		9			

---

---

	-		-			
		106.8148		1.23E-	5.77E-	5.084491
LMNA	56.20105		4.957678			
		29		06	05	8
	5		6			
	19.20919	75.81337	4.955944	1.24E-	5.80E-	5.076775
ATXN2L						
	32	03	68	06	05	91
	-		-			
		884.4372		1.25E-	5.85E-	5.067964
SH3BGRL3	461.3558					
		5	4.953964	06	05	84
	2					
	-		-			
		238.7285		1.27E-	5.92E-	5.053485
CLIC1	54.99801		4.950707			
		19		06	05	37
	3		6			
	-		-			
		270.6608		1.27E-	5.92E-	5.050953
2-Sep	105.4365					
		63	4.950138	06	05	35
	4					
	-		-			
		122.0277		1.28E-	5.92E-	5.050574
SUMO3	41.02768		4.950052			
		13		06	05	77
	5		8			
	-		-			
		68.52309		1.28E-	5.92E-	5.049993
POLR2E	16.95597		4.949922			
		02		06	05	64
	4		1			
	24.03368	109.7982	4.949459	1.28E-	5.92E-	5.047937
PSMF1						
	95	5	4	06	05	24

---

---

	-		-			
		67.76076		1.29E-	5.96E-	5.040237
HMG20B	27.44734		4.947726			
		39		06	05	09
	5		6			
	-		-			
		26.91400		1.29E-	5.96E-	5.036796
LINC01881	16.15727		4.946952			
		77		06	05	23
	5		1			
	11.96220	19.22147	4.946895	1.29E-	5.96E-	5.036546
SOX6						
	28	77	96	06	05	89
	-		-			
		77.56644		1.30E-	5.98E-	5.031738
BARD1	40.45781		4.945813			
		77		06	05	26
	2		4			
	31.20493	153.2289	4.943749	1.31E-	6.03E-	5.022571
ATP5F1A						
	44	82	2	06	05	39
	4.064924	7.420830	4.941225	1.33E-	6.09E-	5.011366
CRTC1						
	83	1	11	06	05	66
	-		-			
		131.5179		1.35E-	6.15E-	5.000303
IVNS1ABP	39.42370		4.938731			
		04		06	05	67
	6		9			
	-		-			
		90.45512		1.38E-	6.28E-	4.978566
NUTF2	46.23256		-4.93383			
		74		06	05	47
	4					

---

---

	-		-			
		176.9601		1.39E-	6.33E-	4.969217
NAP1L4	45.79437		4.931720			
		4		06	05	62
	4		5			
	-		-			
		245.2510		1.40E-	6.35E-	4.965020
CCND3			4.930773			
	90.38547	71		06	05	64
			2			
	-		-			
		6.264970		1.42E-	6.43E-	4.952475
LOC10013035	5.548042					
7		55	4.927941	06	05	98
	4					
	-		-			
		123.5110		1.44E-	6.53E-	4.936120
DAD1	77.27941		4.924246			
		23		06	05	18
	2		3			
	-		-			
		5773.975		1.45E-	6.54E-	4.932501
PF4			4.923428			
	5445.158	54		06	05	79
			6			
	27.49520	155.8063	4.920610	1.47E-	6.61E-	4.920033
RCSD1						
	9	75	06	06	05	58
	-		-			
		47.58381		1.47E-	6.61E-	4.919631
GTF3C6	26.92465		4.920519			
		62		06	05	24
	8		1			
	12.98110	27.49473	4.919008	1.48E-	6.64E-	4.912952
ATP2B1						
	9	26	74	06	05	45

---

---

	-		-			
		84.51188		1.48E-	6.66E-	4.908162
PIP4P2	52.60796		4.917925			
		18		06	05	34
	4		3			
	23.56194	133.0302	4.916090	1.50E-	6.71E-	4.900054
PIK3R1						
	21	24	78	06	05	09
	-		-			
		42.27413		1.51E-	6.75E-	4.893440
ITFG1	27.14803		4.914594			
		89		06	05	82
	1		1			
	-		-			
		113.3099		1.51E-	6.77E-	4.888854
RAB4A	55.95307		4.913555			
		61		06	05	08
	9		9			
	-		-			
		154.6586		1.53E-	6.82E-	4.879993
PCNP	74.46643		4.911549			
		74		06	05	81
	4		7			
	13.54085	54.13055	4.906637	1.57E-	6.97E-	4.858311
KANSL1						
	38	8	43	06	05	12
	-		-			
		240.7029		1.57E-	6.98E-	4.855121
TPM1			4.905914			
	171.0218	33		06	05	04
			4			
	7.939035	25.03582	4.905366	1.57E-	6.99E-	4.852704
PDP1						
	63	21	54	06	05	4

---





---

	-		-			
		100.4489		1.67E-	7.29E-	4.797603
ASH2L	29.94139		4.892861			
		49		06	05	62
	4		9			
	-					
		68.81781		1.68E-	7.31E-	4.794161
POLR3G	51.57591		-4.89208			
		25		06	05	86
	8					
	-					
		180.3334		1.68E-	7.32E-	4.790807
TUBA1C	71.66115		4.891317			
		23		06	05	86
	6		8			
	-					
		196.7001		1.70E-	7.40E-	4.779169
ZMAT2	69.32444		4.888672			
		85		06	05	13
	5		4			
	-					
		141.0220		1.71E-	7.41E-	4.775508
VAPB	65.22586		4.887840			
		36		06	05	8
	1		2			
	-					
		6.800477	16.42534	4.887334	1.71E-	7.41E-
PARP15						
	03	5	26	06	05	97
	-					
		1075.480		1.71E-	7.41E-	4.772715
HIST1H2AC	688.4669		-			
		64	4.887205	06	05	75
	8					

---

---

	-		-			
		74.14944		1.72E-	7.41E-	4.772201
ARMCX3	33.39215		4.887088			
		51		06	05	53
	7		1			
	-	18.96698	-	1.76E-	7.57E-	4.750624
INKA2-AS1			4.882179			
	14.20965	77		06	05	08
			1			
	20.78219	87.29130	4.881397	1.76E-	7.58E-	4.747190
CCDC50						
	33	94	48	06	05	08
	-		-			
		323.4827		1.77E-	7.58E-	4.744891
SKAP2	179.6879		4.880874			
		72		06	05	49
	6		2			
	15.51917	39.72628	4.880306	1.77E-	7.58E-	4.742398
TSPAN5						
	15	5	7	06	05	69
	7.326005	22.10684	4.880237	1.77E-	7.58E-	4.742095
ZSWIM8						
	56	33	6	06	05	17
	-	46.37675	-	1.79E-	7.67E-	4.730505
CALU			4.877598			
	23.11988	85		06	05	3
			2			
	-	262.0230	-	1.82E-	7.75E-	4.718096
UBAP2						
	120.7906	8	4.874771	06	05	16
	7.444412	12.40852	4.874385	1.82E-	7.75E-	4.716404
LINC00926						
	86	72	56	06	05	97

---

---

	-		-			
		172.5143		1.82E-	7.75E-	4.715299
GUCY1B1	119.1030		4.874133			
		93		06	05	43
	9		6			
			-			
		1538.151		1.83E-	7.79E-	4.709002
SPARC	-1157.52		4.872698			
		59		06	05	96
			3			
	15.60315	72.99876	4.871212	1.85E-	7.83E-	4.702484
PLCL2						
	07	21	03	06	05	17
	10.27372	41.49983	4.870926	1.85E-	7.83E-	4.701233
LONP2						
	24	53	94	06	05	98
			-			
	-	112.8317		1.85E-	7.84E-	4.698720
UBXN4			4.870353			
	28.21383	16		06	05	17
			7			
			-			
	-	41.85381		1.88E-	7.91E-	4.688451
ACVR1	27.70375		4.868011			
		17		06	05	04
	6		1			
			-			
	-	81.66954		1.90E-	7.98E-	4.677762
AMFR	45.12091		4.865571			
		26		06	05	38
	5		9			
	8.016485	22.10448	4.865428	1.90E-	7.98E-	4.677133
SLC25A36						
	58	77	28	06	05	14

---

---

	-		-			
		56.72692		1.90E-	7.98E-	4.676156
REPS2	33.00667		4.865205			
		17		06	05	02
	6		2			
	-		-			
		262.6874		1.91E-	8.00E-	4.671547
SUSD1	169.9489		4.864153			
		23		06	05	26
	8		1			
	-		-			
		150.2785		1.92E-	8.05E-	4.663943
NLK	91.03893		4.862416			
		47		06	05	13
	8		7			
	-		-			
		1117.277		1.93E-	8.07E-	4.660305
PKM	628.6587		4.861585			
		92		06	05	19
	4		8			
	-		-			
		184.7383		1.93E-	8.07E-	4.659519
ARL6IP5	112.8528		4.861406			
		79		06	05	14
	3		3			
	15.19616	62.60229	4.859868	1.95E-	8.11E-	4.652787
SEC24C						
	76	36	37	06	05	12
	-		-			
		194.9484		1.96E-	8.15E-	4.646749
PGD	85.54900		4.858488			
		78		06	05	65
	7		8			
	8.088791	16.93958	4.857984	1.97E-	8.15E-	4.644543
CR1						
	79	09	55	06	05	49

---

---

	-		-			
		48.09768		1.97E-	8.15E-	4.642500
PAPSS1	17.39918		4.857517			
		04		06	05	27
	2		5			
	-		-			
		22.34745		1.97E-	8.15E-	4.642173
ITGA9-AS1	15.95339		4.857442			
		54		06	05	55
	3		9			
	13.15080	62.63500	4.856936	1.97E-	8.15E-	4.639956
QRICH1						
	94	35	15	06	05	79
	-		-			
		93.62116		1.98E-	8.15E-	4.639523
SKA3	48.30272		4.856837			
		57		06	05	93
	3		2			
	-		-			
		340.7583		2.02E-	8.31E-	4.619357
RAB31	210.9139		4.852225			
		14		06	05	18
	3		2			
	9.920501	34.84879	4.851248	2.03E-	8.34E-	4.615086
LIMD1						
	74	61	19	06	05	97
	-		-			
		62.93274		2.03E-	8.34E-	4.613132
ESAM	43.08082		4.850800			
		63		06	05	34
	4		9			
	-		-			
		24.93350		2.06E-	8.42E-	4.602347
TGFB111	14.91741		4.848332			
		59		06	05	17
	6		3			

---

---

MAST3	17.79876	70.35056	4.845875	2.08E-	8.51E-	4.591618
	63	75	67	06	05	93
TIAM1	10.97470	37.61872	4.843775	2.10E-	8.58E-	4.582450
	93	82	37	06	05	43
MEF2C-AS1	-	20.97952	-	2.11E-	8.59E-	4.577480
	13.64931	47	4.842636	06	05	22
	4		5			
LINC00548	-	6.788014	-	2.11E-	8.59E-	4.576726
	5.643404	63	4.842463	06	05	97
	2		9			
LINC00598	-	6.788014	-	2.11E-	8.59E-	4.576726
	5.643404	63	4.842463	06	05	97
	2		9			
FCRL1	5.153352	6.749885	4.839927	2.14E-	8.68E-	4.565663
	17	69	81	06	05	27
WSB2	-	51.35125	-	2.15E-	8.70E-	4.559936
	14.10783	63	4.838614	06	05	37
	1		6			
SNAP23	-		-	2.15E-	8.70E-	4.559579
	226.0730	372.2468	4.838532	06	05	94
	1		9			

---

---

RANBP10	13.57847	31.82243	4.833815	2.20E-	8.87E-	4.539017
	62	99	44	06	05	69
	-					
MYL9	455.3878	598.1554	4.833765	2.20E-	8.87E-	4.538800
	8	43	5	06	05	09
	-					
HIST1H2BC	148.4824	392.0460	4.833006	2.21E-	8.89E-	4.535491
	148.4824	06	4.833006	06	05	38
ARIH1	13.70307	60.27410	4.832498	2.21E-	8.89E-	4.533278
	34	5	12	06	05	82
	-					
UBE2L3	25.13025	98.10218	4.832283	2.21E-	8.89E-	4.532345
	7	24	9	06	05	84
PWAR5	3.251806	4.21601	4.831630	2.22E-	8.90E-	4.529498
	94		22	06	05	58
PTAR1	8.948338	31.36431	4.830955	2.23E-	8.92E-	4.526559
		78	46	06	05	98
	-					
KIF2A	974.1920	1463.123	4.829599	2.24E-	8.95E-	4.520654
	6	68	2	06	05	44
SEZ6L	0.802542	0.602955	4.829585	2.24E-	8.95E-	4.520594
	84	09	52	06	05	88

---



---

	-		-			
ASAP1	171.7629	390.0302	4.827814	2.26E-	9.01E-	4.512887
	5	16	9	06	05	19
ST3GAL3	20.89852	33.42911	4.825334	2.29E-	9.10E-	4.502095
	7	12	8	06	05	09
SGMS1	24.62630	55.48463	4.823655	2.30E-	9.15E-	4.494790
	9	2	6	06	05	74
ZNF407	7.707265	22.30684	4.822253	2.32E-	9.19E-	4.488692
	52	13	36	06	05	96
RAB2B	18.35461	44.96023	4.822078	2.32E-	9.19E-	4.487934
	47	73	92	06	05	49
GRAP2	510.1814	770.7009	4.820661	2.34E-	9.24E-	4.481772
	5		4	06	05	
LAPTM5	50.45096	262.9236	4.819129	2.35E-	9.29E-	4.475115
	86	26	92	06	05	42
PSTPIP2	61.55994	126.8024	4.817316	2.37E-	9.36E-	4.467236
	5	01	6	06	05	5

---

---

	-					
PADI4	24.08181	40.05541	-4.81644	2.38E-	9.38E-	4.463428
	9	76		06	05	21
SLC25A3	23.65799	107.5422	4.814784	2.40E-	9.44E-	4.456236
	31	06	15	06	05	79
BCL2	15.77989	57.96382	4.814444	2.41E-	9.44E-	4.454761
	59	86	48	06	05	87
SMARCA5	224.8414	519.8525	4.813664	2.41E-	9.46E-	4.451373
	1	69	2	06	05	77
CTSA	322.9003	457.1602	4.812605	2.43E-	9.49E-	4.446779
	4	07	9	06	05	67
CGRRF1	8.897059	15.34183	4.809580	2.46E-	9.61E-	4.433649
	5	69	2	06	05	29
CD63	20.96180	44.19936	4.809178	2.46E-	9.61E-	4.431908
	8	48	9	06	05	19
CHMP4B	36.92258	150.2057	4.807293	2.49E-	9.68E-	4.423730
		75	6	06	05	65

---

---

	-		-			
		75.53585		2.51E-	9.74E-	4.415820
SBDS	29.47701		4.805469			
		97		06	05	07
	9		2			
	-		-			
		37.04409		2.51E-	9.74E-	4.415122
DNAJC4	15.95213		4.805308			
		82		06	05	92
	3		4			
	6.709027	6.952095	4.803274	2.53E-	9.82E-	4.406307
TTC14						
	56	18	76	06	05	99
	-		-			
		118.0476		2.55E-	9.89E-	4.398363
RHOBTB1	81.99667		4.801441			
		99		06	05	02
	6		2			

---