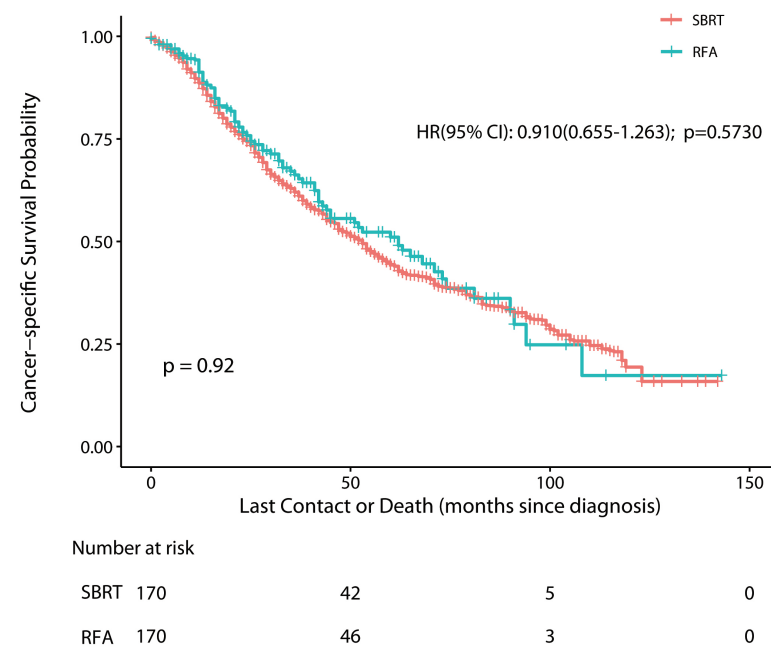
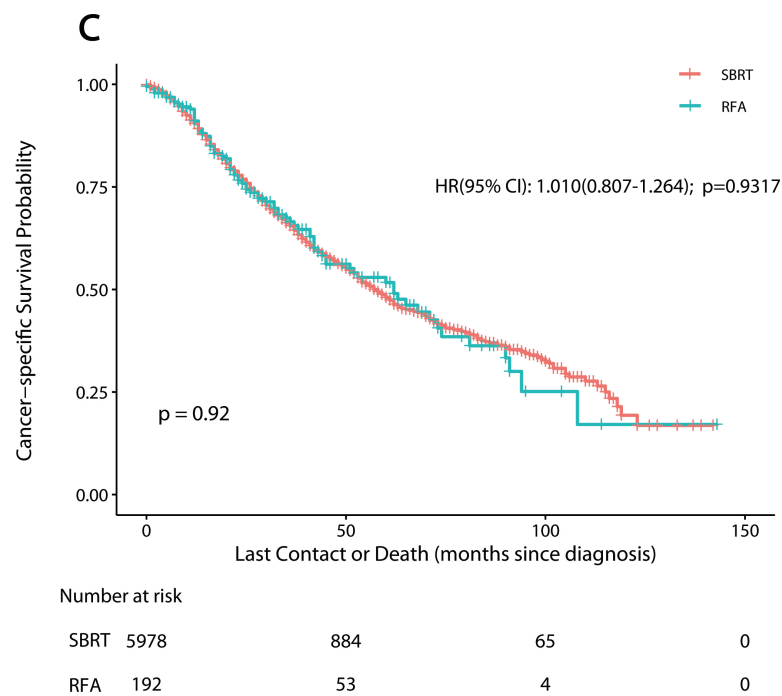
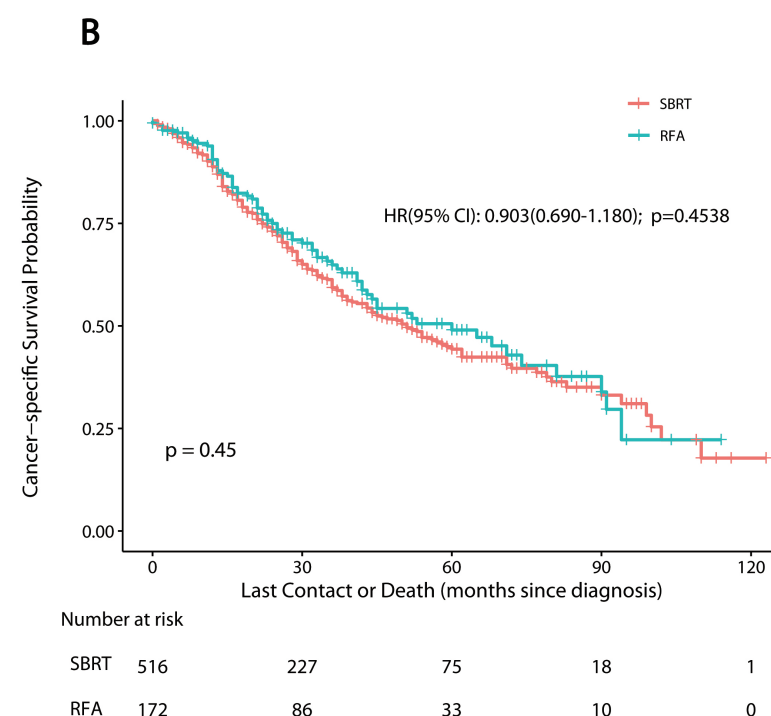
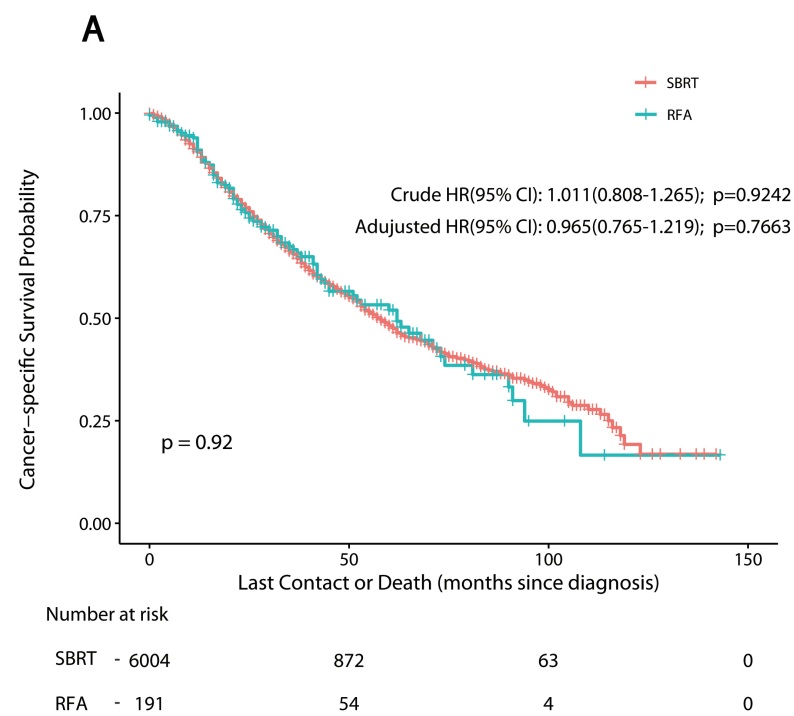


Figure S1



sTable 1. Cancer-specific Survival Rates (%) of RFA versus SBRT in Patients with NSCLC

Year	Unmatched (95% CI)		Matched (95% CI)		IPTW (95% CI)		Overlap Weighting (95% CI)	
	RFA	SBRT	RFA	SBRT	RFA	SBRT	RFA	SBRT
1	91.0 (86.8-95.3)	90.5 (89.7-91.3)	90.5 (86.1-95.2)	88.8 (86.0-91.6)	91.1 (87.0-95.4)	90.4 (89.6-91.2)	91.2 (86.9-95.8)	88.6 (83.8-93.7)
2	75.7 (69.4-82.6)	76.9 (75.6-78.2)	75.0 (68.2-82.4)	73.0 (68.9-77.3)	75.9 (69.6-82.7)	76.8 (75.6-78.1)	75.8 (69.1-83.1)	74.3 (67.5-81.9)
3	66.7 (59.6-74.7)	65.6 (64.0-67.2)	64.9 (57.2-73.5)	59.3 (54.6-64.4)	66.5 (59.4-74.5)	65.5 (63.9-67.1)	66.2 (58.6-74.8)	62.0 (54.1-71.0)
4	56.5 (48.7-65.7)	56.4 (54.5-58.2)	54.3 (45.9-64.1)	51.7 (46.7-57.2)	56.2 (48.3-65.3)	56.2 (54.4-58.1)	55.6 (47.2-65.4)	52.4 (44.0-62.4)
5	52.0 (43.8-61.7)	48.1 (46.1-50.3)	49.0 (40.3-59.6)	44.3 (39.0-50.4)	51.7 (43.5-61.4)	48.0 (46.0-50.2)	51.0 (42.4-61.5)	44.4 (35.5-55.4)

Abbreviations: RFA, radiofrequency ablation; SBRT, stereotactic body radiotherapy; IPTW, inverse probability of treatment weight.

