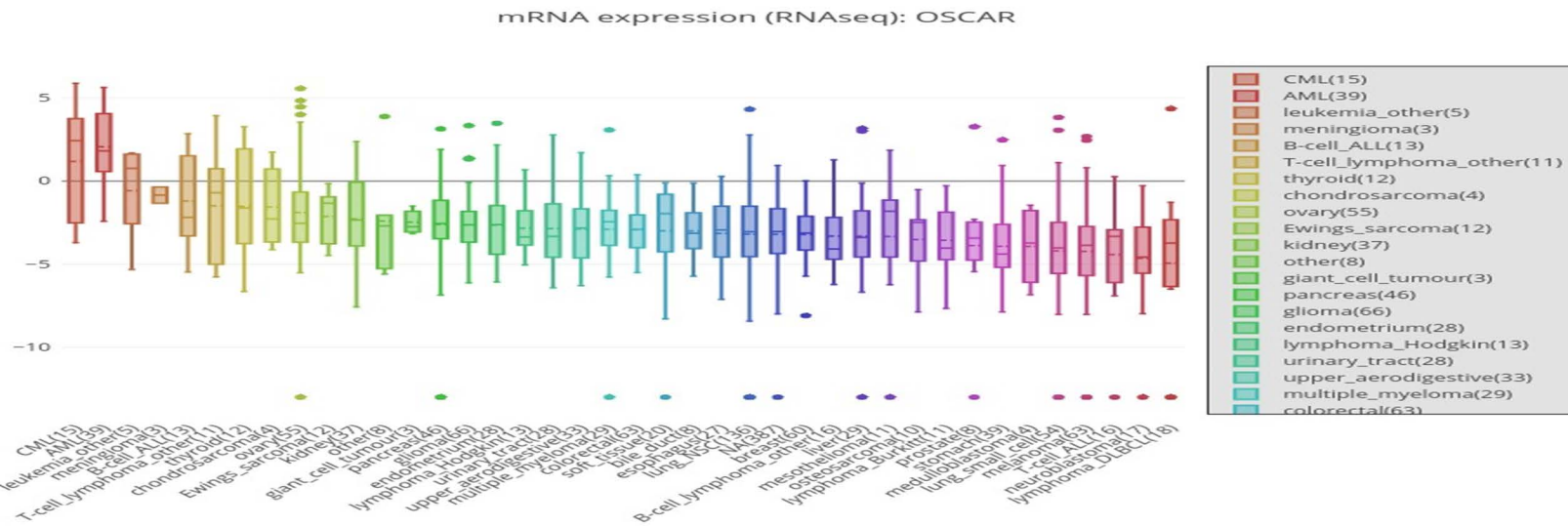


Supp. table 1. The characteristics of patients in the GBM, KIRC, LGG and UVM

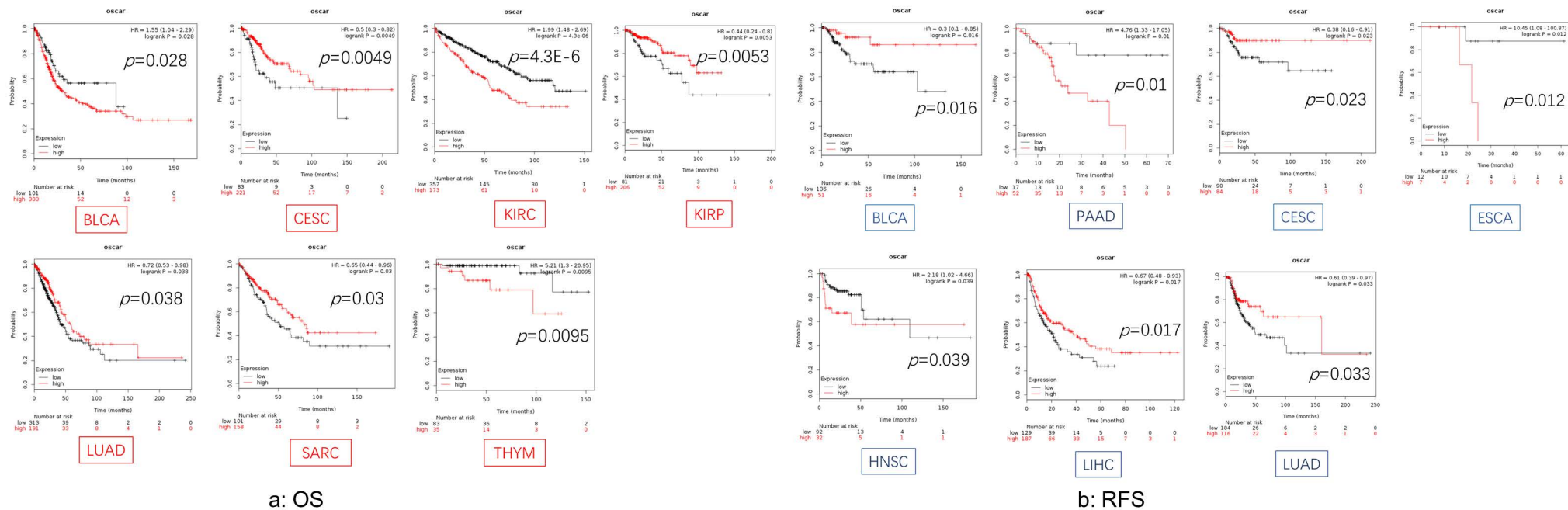
Characteristic	GBM		KIRC		LGG		UVM	
	Total (N=599)	Percentage (%)	Total (N=537)	Percentage (%)	Total (N=515)	Percentage (%)	Total (N=80)	Percentage (%)
Age								
≤60	326	54.42	266	49.53	454	88.16		
> 60	273	45.58	271	50.47	61	11.84		
unknown							80	100
Gender								
Female	230	38.40	191	35.57	230	44.66	35	43.75
Male	369	61.60	346	64.43	285	55.34	45	56.25
Grade								
G1			14	2.61				
G2			230	42.83	249	48.35		
G3			207	38.55	265	51.46		
G4			78	14.53				
Gx			5	0.93				
unknown	599	100	3	0.56	1	0.19	80	100
Tumor stage								
Stage I			269	50.09				
Stage II			57	10.61			39	48.75
Stage III			125	23.28			36	45.00
Stage IV			83	15.46			4	5.00
unknown	599	100	3	0.56	515	100	1	1.25
T classification								
T1			275	51.21				
T2			69	12.85			14	17.50
T3			182	33.89			32	40.00
T4			11	20.48			34	42.50
unknown	599	100			515	100		
N classification								
N0			240	44.69			52	65.00
N1			17	3.17				
Nx			280	52.14			27	33.75
unknown	599	100					1	1.25
M classification								
M0			426	79.33			51	63.75
M1			79	14.71			4	5.00
Mx			30	5.59			23	28.75
unknown	599	100	2	0.37	515	100	2	2.5

GBM, Glioblastoma multiforme; KIRC: Kidney renal clear cell carcinoma; LGG: Brain Lower Grade Glioma; UVM: Uveal Melanoma.

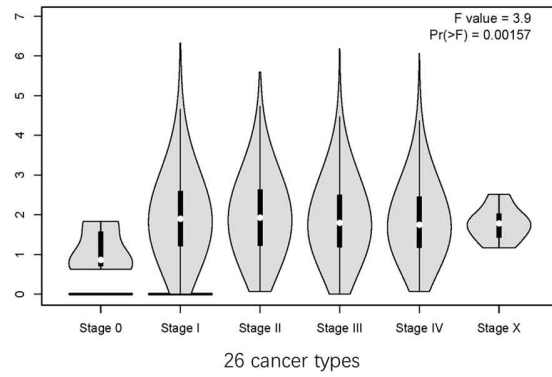
A



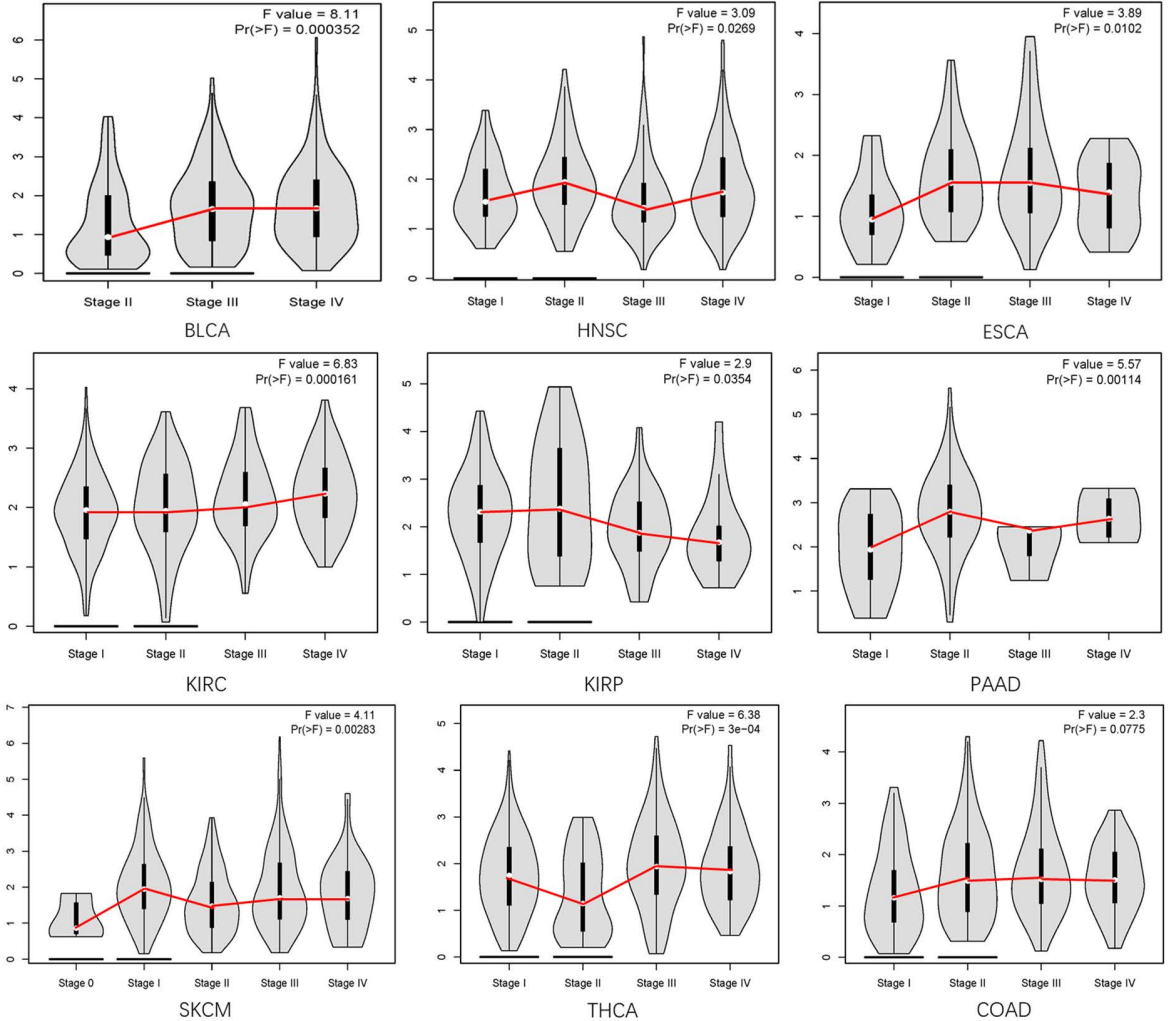
B



A



B



Supp. fig. 3

