

Supplementary Material for

Data mining analysis of the prognostic impact of N⁶-methyladenosine regulators in patients with endometrial adenocarcinoma

Figure S1

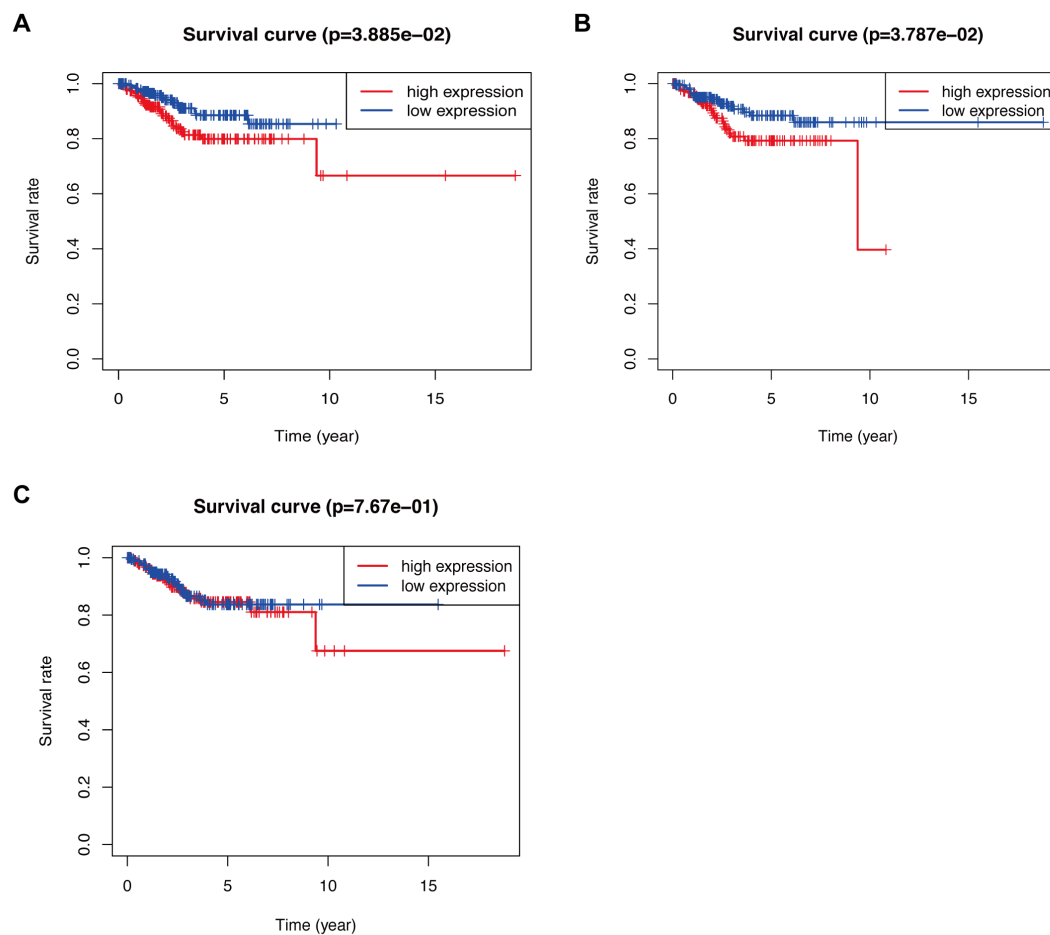


Figure S1. Kaplan-Meier overall survival curves for patients in TCGA datasets (only tumor, N=406) classified based on high and low expression of *FTO* (A), *RBM15* (B), and *YTHDF1* (C), respectively.

Table S1. Clinical parameters of patients with endometrial adenocarcinoma (TCGA dataset)

		Number (n=406)	Percentage (%)
Age (31-90)	<Median	215	52.96
	≥Median	191	47.04
Grade	G1	97	23.89
	G2	119	29.31
	G3	190	46.80

Table S2. Clinical parameters of recruited patients with endometrial adenocarcinoma and controls (validation cohort)

	Patients with endometrial adenocarcinoma	Patients with normal endometrial tissues
Number	15	15
Age	47.60 ± 6.82	43.87 ± 6.94
Menopause		
Yes	10	4
No	5	11
Pregnancy history		
Yes	13	11
No	2	4
Family history		
Yes	1	—
No	14	—
Clinical stage (FIGO)		
I	12	—
II	3	—
III	0	—
Vascular invasion		
Yes	0	—
No	15	—
Lymph node metastasis		
Yes	0	—
No	15	—

All data are Mean ± SD values.

FIGO, International Federation of Gynecology and Obstetrics.