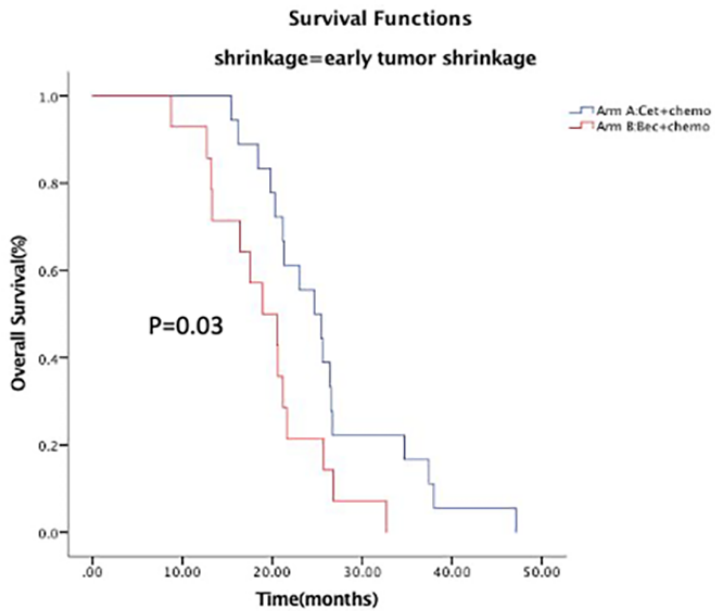
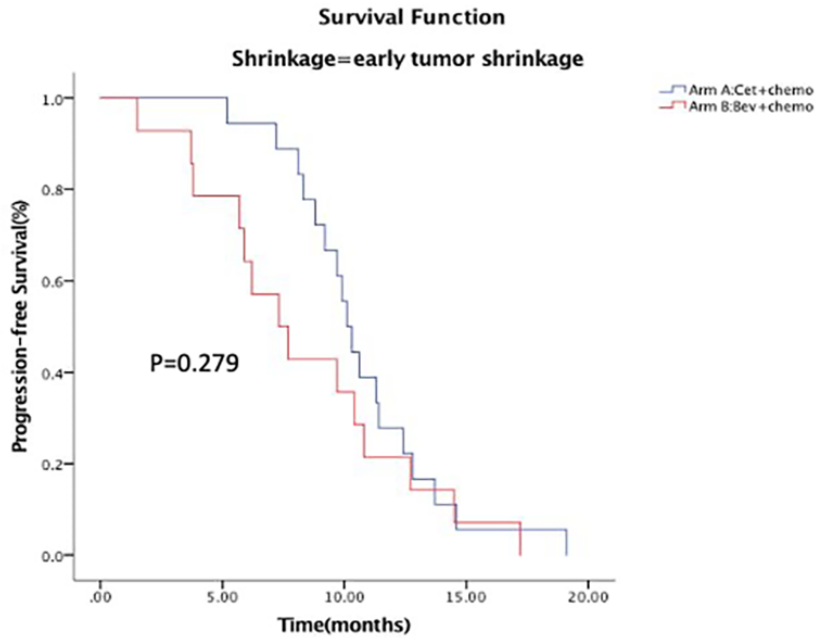
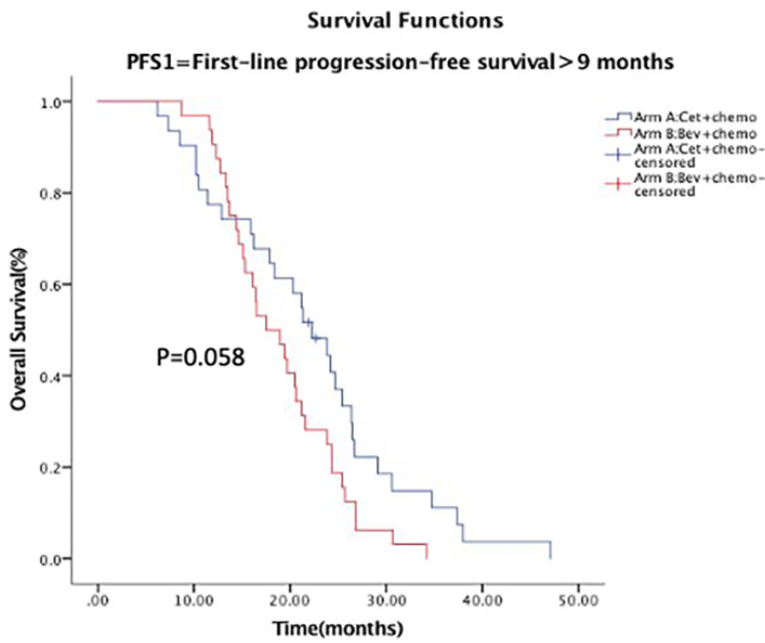
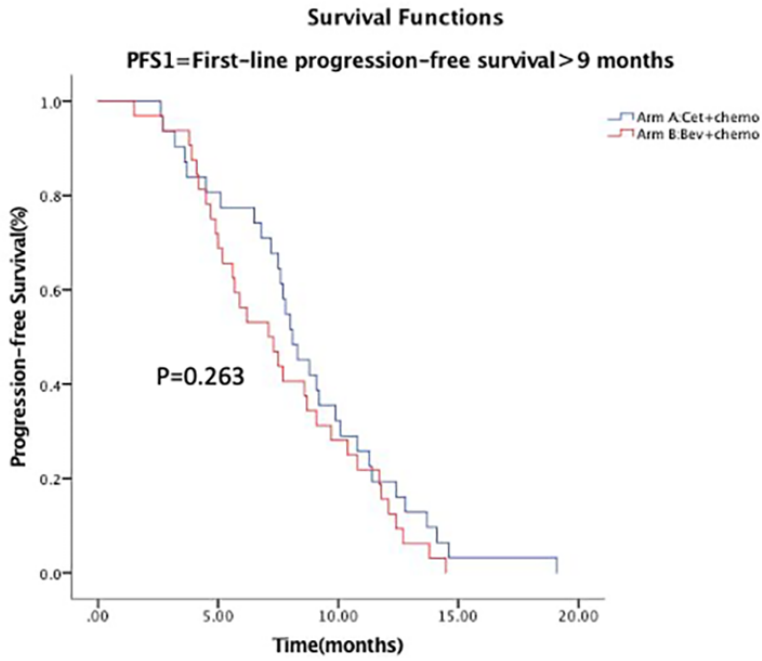


**Continuing Cetuximab vs Bevacizumab plus chemotherapy after first progression
in wild-type *KRAS*, *NRAS* and *BRAF V600E* metastatic colorectal cancer: a
randomized phase II trial**

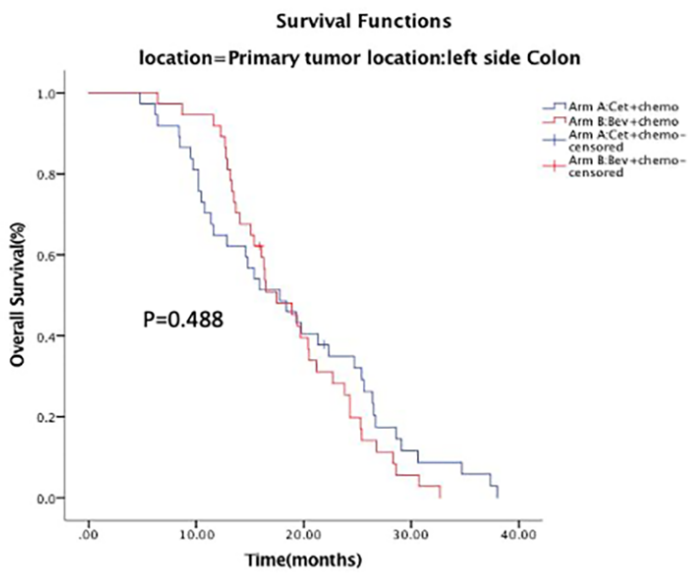
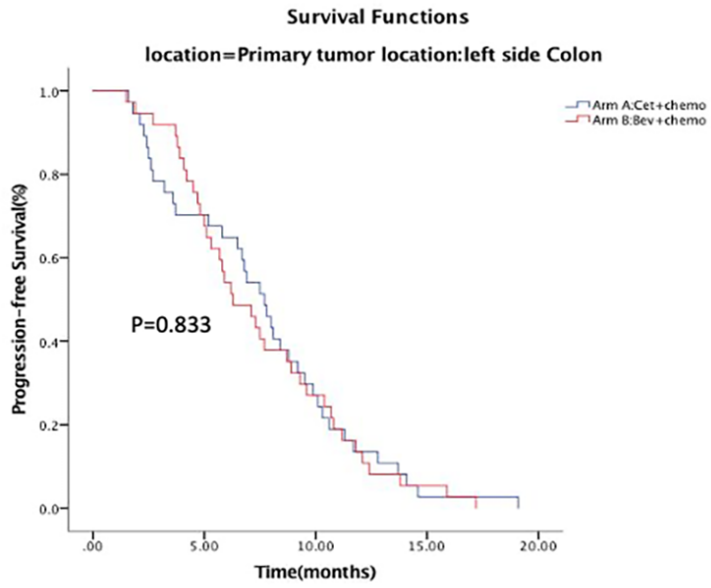
Danyang Li^a, Feng Wang^b, Shuning Xu^a, Ke Li^a, Xiangrui Meng^b, Yangyang Huang^a, Ning
Ma^c, Lei Qiao^a, Gaizhen Kuang^a, Jinghong Chen^a, Ying Liu^{a,*}



Sup Fig 1. Kaplan-Meier estimates of PFS (upper) and OS (lower) in patients with early tumor shrinkage.



Sup Fig 2. Kaplan-Meier estimates of PFS (upper) and OS (lower) in patients with first-line PFS >9 months.



Sup Fig 3. Kaplan-Meier estimates of PFS (upper) and OS (lower) in patients with left-sided primary tumors.