

**Figure S1**

Kaplan-Meier curve with log-rank test in brain metastasis free survival (BMFS)

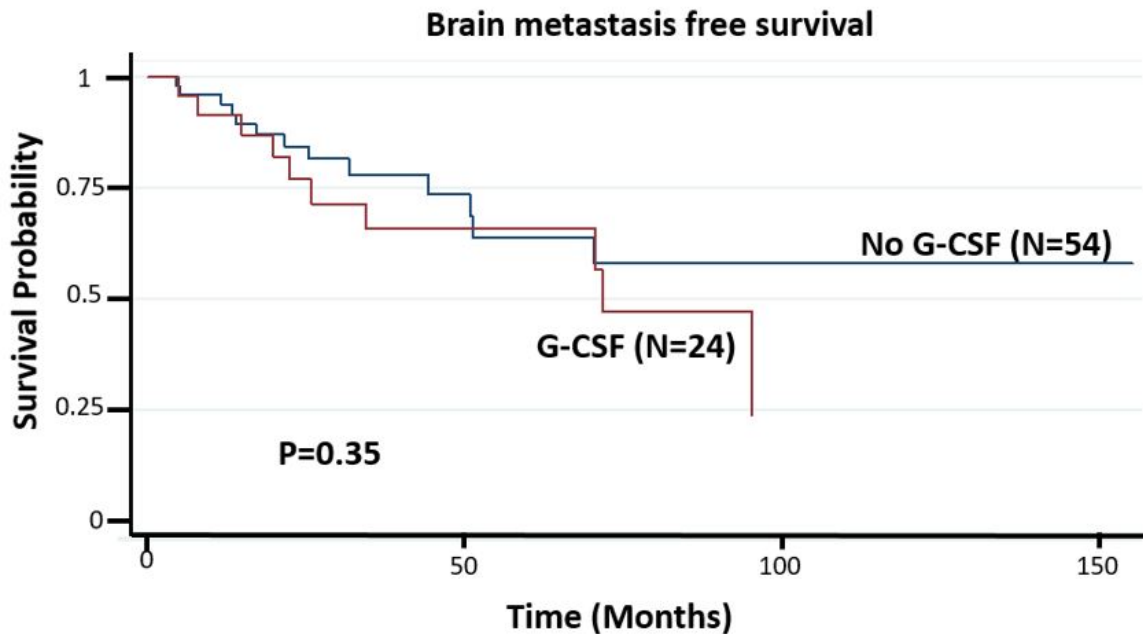


Figure S1. Kaplan-Meier curve with log-rank test in brain metastasis free survival (BMFS)

**Table S1. Cox proportional hazard models in brain metastasis free survival**

	Univariate analysis		Multivariate analysis	
	Hazard Ratio (95%CI)	P-Values	Hazard Ratio (95%CI)	P-Values
<b>Age (range, median)</b>	0.98 (0.94-1.01)	0.17		
<b>Ethnicity</b>				
Caucasian	Ref		Ref	
African American	3.36 (1.12-10.06)	0.03	2.65 (0.84-8.36)	0.1
Others	2.07 (0.72-5.96)	0.18	2.86 (0.87-9.37)	0.08
<b>Menopausal status</b>				
Premenopause	Ref			
Postmenopause	0.54 (0.23-1.28)	0.16		
<b>Smoking Status</b>				
No	Ref			
Yes	0.96 (0.37-2.45)	0.93		
<b>Active PE/DVT</b>				
No	Ref		Ref	
Yes	2.98 (1.23-7.17)	0.02	3.08 (1.1-8.6)	0.03
<b>Hormonal Status</b>				
Negative	Ref			

<b>Positive</b>	1.42 (0.42-4.81)	0.57		
<b>HER2 status</b>				
<b>Negative</b>	Ref			
<b>Positive</b>	0.96 (0.41-2.24)	0.92		
<b>Histology</b>				
<b>Ductal</b>	Ref			
<b>Lobular</b>	1.62 (1.47-5.56)	0.45		
<b>Others</b>	0.63 (0.14-2.74)	0.54		
<b>Hormone treatment</b>				
<b>No</b>	Ref			
<b>Yes</b>	0.72 (0.26-1.98)	0.53		
<b>HER2 treatment</b>				
<b>No</b>	Ref			
<b>Yes</b>	1.24 (0.54-2.87)	0.62		
<b>Immunotherapy</b>				
<b>No</b>	Ref			
<b>Yes</b>	1.43 (0.48-4.25)	0.53		
<b>G-CSF use</b>				
<b>No</b>	Ref		Ref	
<b>Yes</b>	1.33 (0.57-3.1)	0.52	0.85 (0.32-2.22)	0.74

**Table S2. Cox proportional hazard models in overall survival**

	Univariate analysis		Multivariate analysis	
	Odds Ratio (95%CI)	P-Values	Odds Ratio (95%CI)	P-Values
<b>Age (range, median)</b>	1.01 (0.98-1.04)	0.5		
<b>Ethnicity</b>				
Caucasian	Ref		Ref	
African American	3.94 (1.39-11.11)	0.01	4.78 (1.62-14.1)	0.005
Others	1.59 (0.57-4.47)	0.38	2.85 (0.82-9.82)	0.1
<b>Menopausal status</b>				
Premenopause	Ref			
Postmenopause	0.96 (0.45-2.06)	0.92		
<b>Smoking Status</b>				
No	Ref			
Yes	1.12 (0.51-2.5)	0.77		
<b>Active PE/DVT</b>				
No	Ref			
Yes	2.16 (0.93-5.06)	0.08		
<b>Hormonal Status</b>				
Negative	Ref			
Positive	0.52 (0.21-1.25)	0.14		
<b>HER2 status</b>				
Negative	Ref		Ref	
Positive	0.29 (0.11-0.75)	0.01	0.66 (0.09-4.96)	0.68
<b>Histology</b>				
Ductal	Ref			
Lobular	1.34 (0.39-4.62)	0.64		
Others	1.44 (0.53-3.9)	0.48		
<b>Hormone treatment</b>				
No	Ref			
Yes	0.79 (0.29-2.13)	0.64		
<b>HER2 treatment</b>				
No	Ref		Ref	
Yes	0.3 (0.11-0.79)	0.02	0.46 (0.06-3.46)	0.45
<b>Immunotherapy</b>				
No	Ref			
Yes	0.93 (0.28-3.15)	0.91		
<b>G-CSF use</b>				
No	Ref		Ref	
Yes	0.53 (0.21-1.31)	0.17	0.36 (0.11-1.14)	0.08