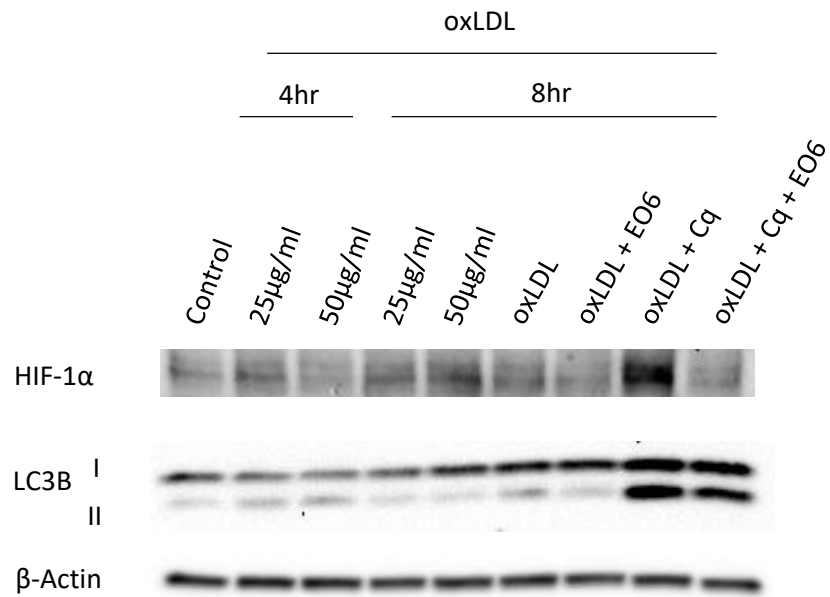


### **Supplemental Figure 1: OxLDL shifts energy balance to a glycolytic profile**

KLM-1 pancreatic cancer cells were titrated with oxLDL (25µg/ml). Difference in OCR% between control and oxLDL-treated cells.



**Supplemental Figure 2: OxLDL and EO6 affect HIF-1α and LC3B protein expression in KLM-1**

A representative westernblot of HIF-1α and LC3B protein levels. KLM-1 cells were treated with oxLDL (25 or 50μg/ml) for 4hr or 8hr. Additionally, KLM-1 cells were treated with oxLDL (50μg/ml) or oxLDL (50μg/ml) + EO6 (14μg/ml) in the presence or absence of chloroquine (20μM) for 8hrs.