

Supplementary Figures

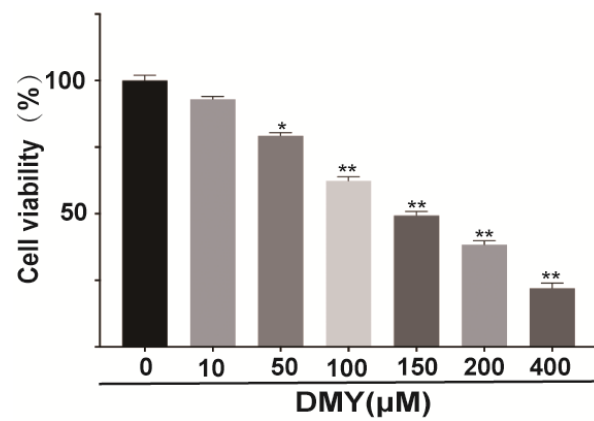


Figure S1 Dihydromyricetin inhibits RBE cells' viability in a dose-dependent manner. The cell viability after exposure to different concentrations of dihydromyricetin for 24 hours in RBE cells was determined by CCK-8 assay. $n = 3$ independent experiments. Values were given as means \pm SEM. * $P < 0.05$, ** $P < 0.01$.

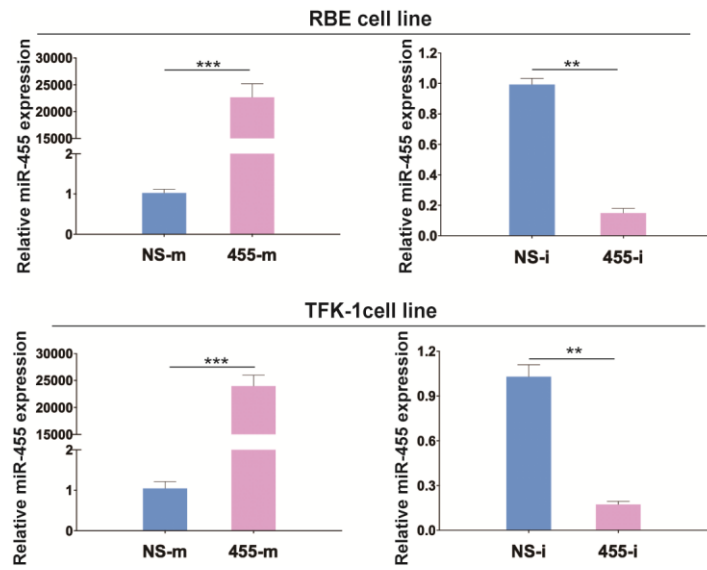


Figure S2 The transfection efficiency of miR-455-3p mimics and inhibitors. RBE cells and TFK-1 cells were transfected with miR-455-3p mimics (455-m) or non-specific mimics (NS-m), or with miR-455-3p inhibitors (455-i) or non-specific inhibitors (NS-i). The mRNA level of miR-455 was evaluated by real time PCR. $n = 3$ independent experiments. Values were given as means \pm SEM. * $P < 0.05$, ** $P < 0.01$.

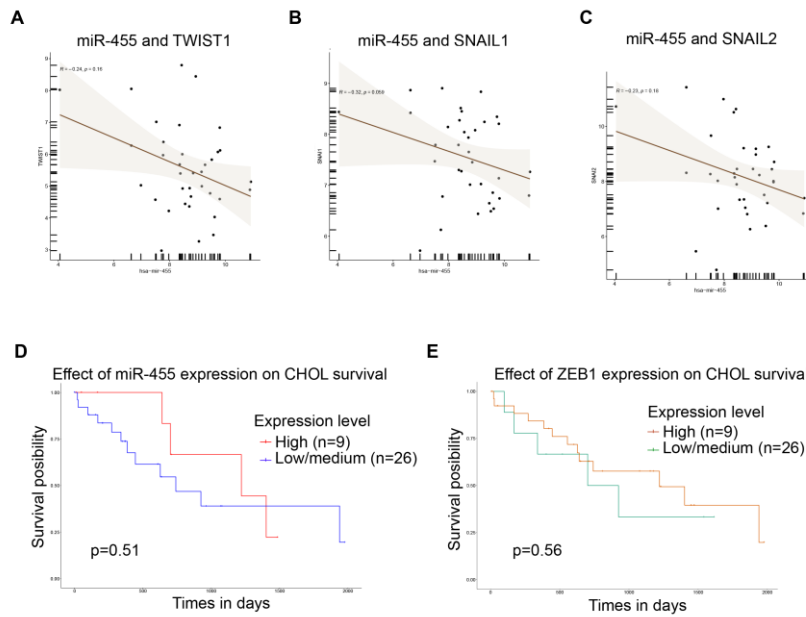


Figure S3 Correlation analyses between miR-455 and the EMT- transcription factors and the relationship between miR-455 (or ZEB1) and patient survival time in human CCA by using the TCGA dataset.

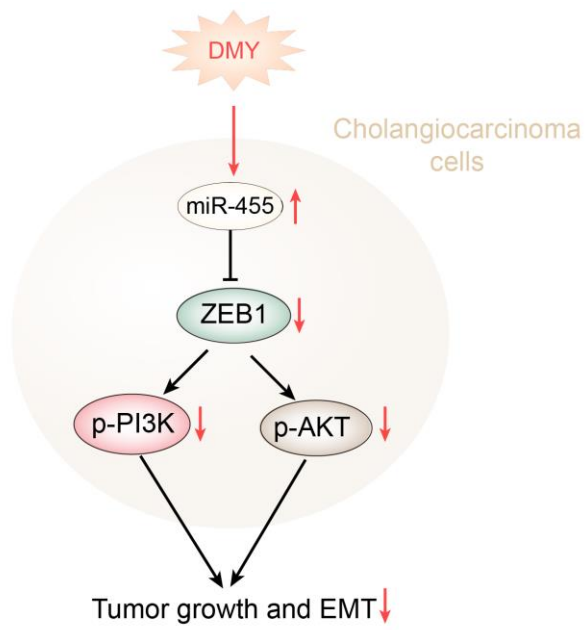


Figure S4 Mechanism diagram of DMY's inhibitory effect on tumor growth and EMT in CCA.