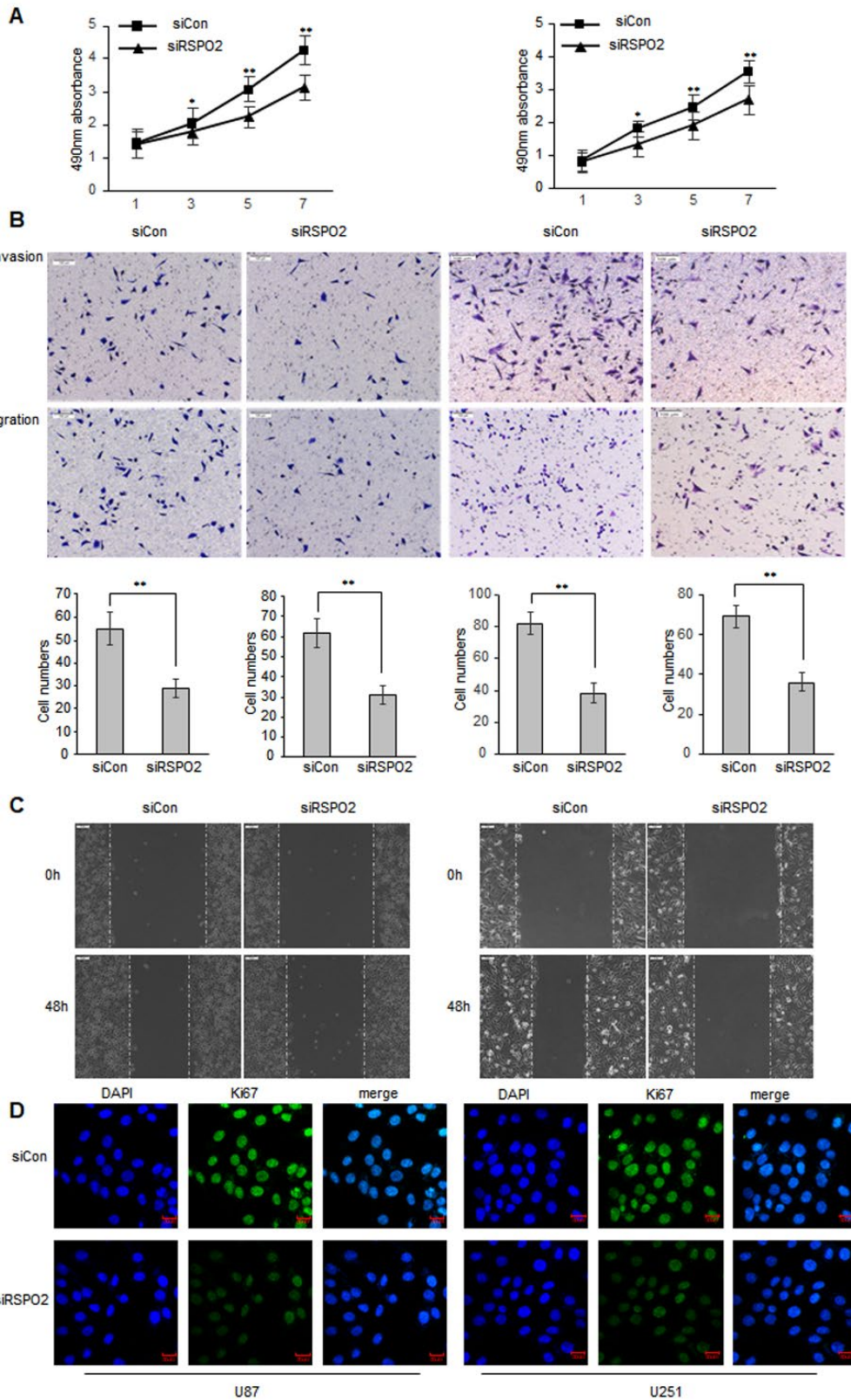


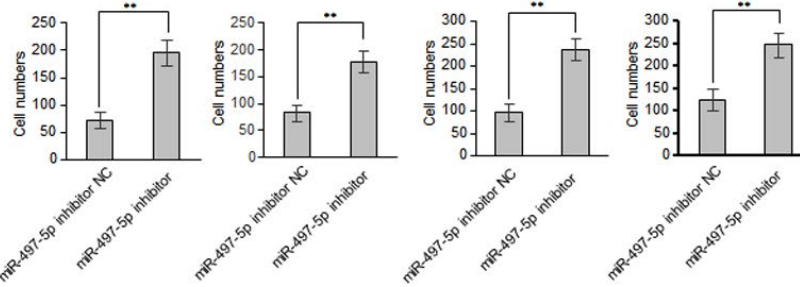
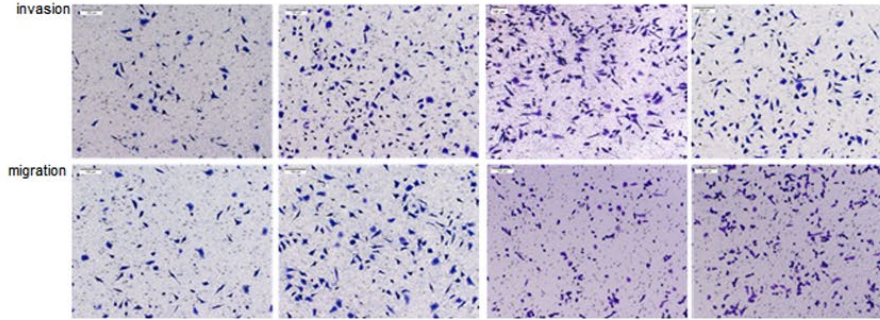
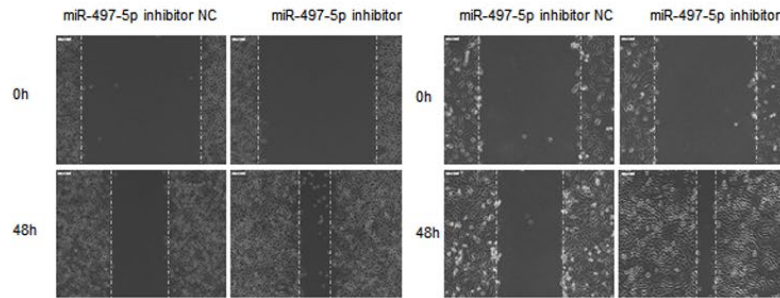
**Supplementary Figure 1. Silencing RSPO2 reduces proliferation, migration, and invasion of GBM cells.**

U87 and U251 cells were transfected with siRSPO2 or siCon. (A) Cell proliferation was determined by MTS assay. (B, C) Cell metastasis was determined by Transwell assays (B) or Scratch wound assays (C). (D) The expression levels of the cell proliferation marker Ki67 were detected by immunofluorescence. Data represent the means  $\pm$  SEM. \*\*P < 0.01.

**Supplementary Figure 2. miR-497-5p inhibitor promotes migratory and invasive ability of GBM cells.**

U87 and U251 cells were transduced with miRNA-497-5p inhibitor NC or miRNA-497-5p inhibitor. (A) MTS assay indicated that miRNA-497-5p inhibitor promoted ability of proliferation. (B) Chamber invasion ability was elevated in miRNA-497-5p inhibitor cells. (C) Cell wound healing ability was improved in miRNA-497-5p inhibitor cells. (D) The expression levels of Ki67 were enhanced by immunofluorescence. Data represent the means  $\pm$  SEM. \*\*P < 0.01.



**A****B****C****D**