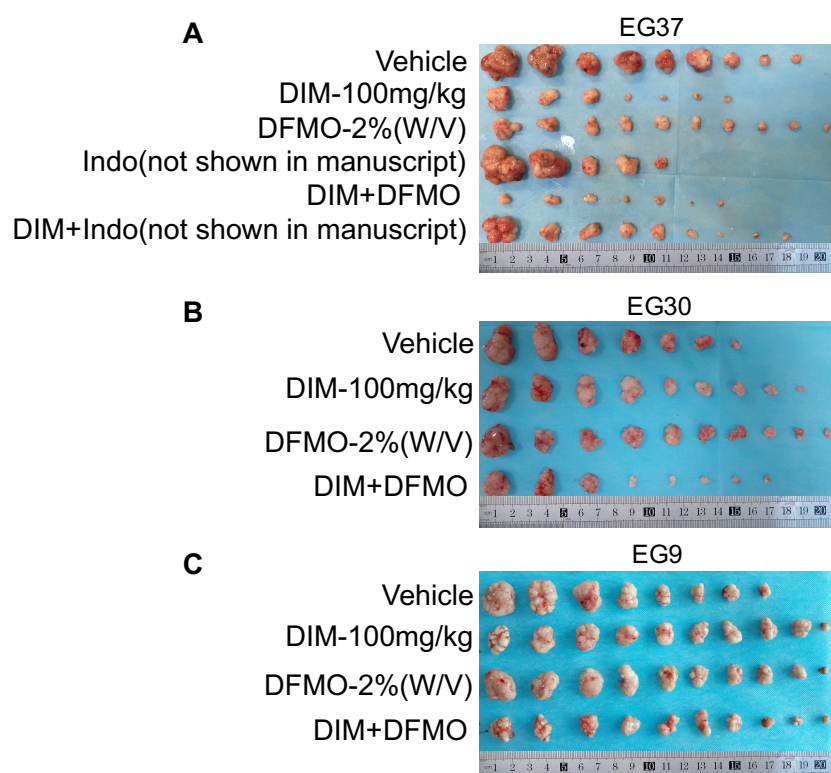
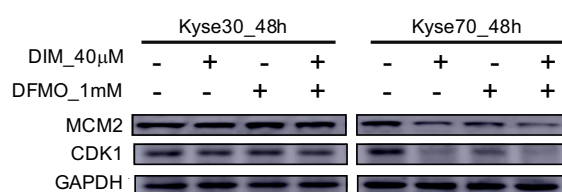


Supplemental Figure 1~2.



Supplemental Figure 1. (A), (B), and (C) showed the results of original complete tumor images for EG37, EG30, and EG9 ESCC PDX models, respectively. The treatment groups in each PDX case were DIM_100mg/kg, DFMO_2% (W/V), and DIM_100mg/kg+DFMO_2%(W/V), respectively.



Supplemental Figure 2. The protein expression levels of MCM2 and CDK1 in ESCC cell lines (Kyse30 and Kyse70) were presented after 48h treatment by Vehicle, DIM_40uM, DFMO_1mM, and DIM_40uM+DFMO_1mM, respectively.