

Research Paper

Association between the Co-administration of Histamine H₂ Receptor Antagonists and the Effectiveness of Capecitabine in Patients with Colorectal Cancer: Propensity Score Analysis

Tomoko Yamazaki¹, Ryuji Uozumi², Hitoshi Kawazoe^{3,4}, Yoshiko Kitazume⁵, Hirotohi Iihara⁶, Hironori Fujii⁶, Masaya Takahashi⁷, Takahiro Arai⁸, Yasushi Murachi^{9,10}, Yumiko Sato¹¹, Takahiro Mikami¹², Koji Hashiguchi¹³, Tomoe Yoshizawa¹, Katsuyuki Takahashi⁷, Yukiyooshi Fujita⁸, Yuki Hosokawa⁹, Issei Morozumi¹¹, Masami Tsuchiya¹², Atsushi Yokoyama¹³, Hironobu Hashimoto⁵, Tetsuya Furukawa⁵

1. Department of Pharmacy, Tohigi Cancer Center, 4-9-13 Yohnan, Utsunomiya, Tochigi 320-0834, Japan.
2. Department of Biomedical Statistics and Bioinformatics, Kyoto University Graduate School of Medicine, 54 Kawahara-cho, Shogoin, Sakyo-ku, Kyoto 606-8507, Japan.
3. Division of Pharmaceutical Care Sciences, Center for Social Pharmacy and Pharmaceutical Care Sciences, Keio University Faculty of Pharmacy, 1-5-30 Shibakoen, Minato-ku, Tokyo 105-8512, Japan.
4. Division of Pharmaceutical Care Sciences, Keio University Graduate School of Pharmaceutical Sciences, 1-5-30 Shibakoen, Minato-ku, Tokyo 105-8512, Japan.
5. Department of Pharmacy, National Cancer Center Hospital, 5-1-1 Tsukiji, Chuo-ku, Tokyo 104-0045, Japan.
6. Department of Pharmacy, Gifu University Hospital, 1-1 Yanagido, Gifu, Gifu 501-1194, Japan.
7. Department of Pharmacy, Osaka City University Hospital, 1-5-7 Asahi-machi, Abeno-ku, Osaka 545-8586, Japan.
8. Division of Pharmacy, Gunma Prefectural Cancer Center, 617-1 Takahayashi-nishi-cho, Ota, Gunma 373-0828, Japan.
9. Department of Pharmacy, Independent Administrative Institution Higashiosaka City Medical Center, 3-4-5 Nishiiwata, Higashiosaka, Osaka 578-8588, Japan.
10. Department of Frontier Science for Cancer and Chemotherapy, Osaka University Graduate School of Medicine, 2-2 Yamadaoka, Suita, Osaka 565-0871, Japan.
11. Department of Pharmacy, Nagoya City University West Medical Center, 1-1-1 Hirate-cho, Kita-ku, Nagoya, Aichi 462-8508, Japan.
12. Department of Pharmacy, Miyagi Cancer Center, 47-1 Nodayama, Medeshimashiote, Natori, Miyagi 981-1293, Japan.
13. Department of Pharmacy, Yokohama Minami Kyousai Hospital, 1-21-1 Mutsuurahigashi, Kanazawa-ku, Yokohama, Kanagawa 236-0037, Japan.

✉ Corresponding author: Hitoshi Kawazoe, Ph.D. Division of Pharmaceutical Care Sciences, Keio University Graduate School of Pharmaceutical Sciences, 1-5-30 Shibakoen, Minato-ku, Tokyo 105-8512, Japan. Tel: +81-3-5400-2639 Fax: +81-3-5400-2651 E-mail: kawazoe-ht@keio.jp

© The author(s). This is an open access article distributed under the terms of the Creative Commons Attribution License (<https://creativecommons.org/licenses/by/4.0/>). See <http://ivyspring.com/terms> for full terms and conditions.

Received: 2022.03.29; Accepted: 2022.07.26; Published: 2022.08.08

Abstract

Background: The association between the effectiveness of capecitabine and the concomitant administration of gastric acid suppressants remains controversial. We aimed to clarify whether the effectiveness of capecitabine is affected by the co-administration of histamine H₂ receptor antagonists (H₂RAs) in early-stage colorectal cancer (CRC) patients using real-world data.

Methods: This multicenter, retrospective, observational study included consecutive patients with stage II–III CRC who received either capecitabine monotherapy or the CapeOX regimen (capecitabine and oxaliplatin) as adjuvant therapy between January 2009 and December 2014 in Japan. Relapse-free survival (RFS) and overall survival were estimated using the Kaplan–Meier method. Additionally, multivariable Cox proportional hazards model, propensity score adjustment, and inverse probability of treatment weighting analyses were performed.

Results: In total, 552 patients were included in this study, of which 30 were co-administered H₂RAs. RFS at five years was 76.7% (95% confidence interval [CI]: 57.2–88.1%) and 79.8% (95% CI: 76.0–83.0%) in the H₂RA and non-H₂RA groups, respectively. Multivariable Cox proportional hazards model and propensity score-adjusted analyses showed that the co-administration of H₂RAs was associated with a poor RFS among those receiving capecitabine monotherapy (hazard ratio [HR], 2.01; 95% CI: 0.86–4.70 and HR, 1.81; 95% CI: 0.77–4.22, respectively). In contrast, these results were inconsistent with the group receiving the CapeOX regimen.

Conclusions: The study findings suggest that the co-administration of H₂RAs may not reduce the effectiveness of capecitabine therapy in patients with early-stage CRC. To confirm this relationship, a prospective study with a pharmacokinetic approach is needed.

Key words: capecitabine, CapeOX, histamine H₂ receptor antagonist, drug-drug interaction, colorectal cancer

Introduction

According to a leading global cancer statistics source, colorectal cancer (CRC) was the third most commonly diagnosed cancer (10.0%) and the second leading cause of cancer death (9.4%) in both the sexes in the year 2020 [1]. Capecitabine is an oral prodrug designed for supplying high concentrations of 5-fluorouracil in tumor cells. It is commonly used for treating solid tumors, including CRC, gastric, as well as breast cancer, according to the package insert in Japan. Several recent studies have suggested that the concomitant use of proton pump inhibitors (PPIs) and capecitabine reduces the effectiveness of capecitabine in CRC [2-5]. Our previous study investigated the clinical consequences of the concomitant administration of PPIs and capecitabine monotherapy or the CapeOX regimen (capecitabine and oxaliplatin) in patients with early-stage CRC, where we found that the co-administration of PPIs led to poor survival outcomes [6]. PPIs are used to manage peptic ulcers and gastroesophageal reflux disease, and are among the most widely prescribed drugs among patients with cancer [7, 8]. Previous studies indicate that drug-drug interactions (DDIs), reduction of capecitabine solubility, or an increased CRC risk associated with PPIs may explain the association between PPI co-administration and the reduced effectiveness of capecitabine. However, the underlying mechanism remains unclear [9-12], which precludes the possibility of a therapeutic strategy that can effectively maintain the effectiveness of capecitabine.

Histamine H₂ receptor antagonists (H₂RAs) are acid-suppressive medications similar to PPIs [7]. In Japan, H₂RAs are widely prescribed for gastrointestinal disorders. However, there are a few reports on combining capecitabine with H₂RAs in CRC patients [4, 12]. Additionally, the clinical impact of the co-administration of H₂RAs with capecitabine as postoperative adjuvant treatment in early-stage CRC patients has not been evaluated. Other studies have suggested that the carcinogenic risk of the long-term administration of H₂RAs is nil or lower than that related to the administration of PPIs [13-15].

The purpose of this study was to clarify whether the co-administration of H₂RAs affects the effectiveness of capecitabine monotherapy and CapeOX regimen in early-stage CRC patients using real-world data.

Methods

Patients

This was a multicenter, retrospective, observational study, and was conducted at nine

institutions in Japan. Data were collected from the medical records of each institution, and compiled at the National Cancer Center Hospital; subsequently, data analyses were performed at the Keio University Faculty of Pharmacy and Kyoto University Graduate School of Medicine. The manuscript was prepared with reference to the STROBE checklist [16].

The inclusion criteria were as follows: 1) consecutive patients aged ≥ 20 years with pathologically diagnosed stage II-III CRC and who had undergone curative surgery; and 2) patients who had received at least one course of adjuvant capecitabine monotherapy (2,500 mg/m², days 1-14, every 3 weeks) or the CapeOX regimen (capecitabine 2,000 mg/m² on days 1-14, plus oxaliplatin 130 mg/m² on day 1, every 3 weeks) between January 2009 and December 2014. The clinicopathological findings were used for reclassification according to the TNM Classification of Malignant Tumors 8th edition, published by the Union for International Cancer Control [17]. The treatment schedule and follow-up duration were modified at the clinician's discretion according to the toxicity profile of each patient.

The exclusion criteria were as follows: 1) refused use of medical records; 2) insufficient or missing information in the medical records; 3) history of the administration of capecitabine monotherapy or CapeOX regimen prior to the investigation period; 4) prior administration of any adjuvant chemotherapy, except for capecitabine monotherapy or the CapeOX regimen; 5) prior administration of any neoadjuvant chemotherapy; 6) concurrent radiotherapy during adjuvant chemotherapy; 7) inadequate bone marrow, liver, and renal function at baseline (neutrophil count $< 1,500$ cells/mm³ or white blood cell count $< 3,000$ cells/mm³; hemoglobin < 9.0 g/dL; platelet count $< 75,000$ cells/mm³; total bilirubin > 2.25 mg/dL; aspartate transaminase > 60 U/L, alanine transaminase > 84 U/L for men and > 46 U/L for women, and creatinine clearance ≤ 51 mL/min as calculated by the Cockcroft-Gault equation); 8) more than eight cycles of adjuvant chemotherapy; 9) development of other carcinomas after receiving adjuvant chemotherapy; and 10) co-administration of PPIs which was defined as a $\geq 20\%$ overlap between PPI administration and adjuvant chemotherapy administration [3].

Data collection

Patient records were de-identified and analyzed anonymously. The following data were collected: age, sex, body surface area, cancer stage, TNM classification of malignant tumors, primary tumor site, chemotherapy regimen and dose, concomitant

PPI or H₂RA use, laboratory data before chemotherapy, and date of recurrence and/or death. The primary site included the right-sided colon (defined as the cecum, ascending colon, and transverse colon), left-sided colon (defined as the descending colon, sigmoid, and rectosigmoid junction), and rectum. The relative dose intensity (RDI) of the capecitabine or CapeOX regimens was defined as the percentage of actual dose intensity per scheduled dose intensity of eight courses. Concomitant use of H₂RAs was defined as a $\geq 20\%$ overlap between H₂RA administration and capecitabine administration in accordance with a previous study [3]. The follow-up period ended on December 31, 2019.

Endpoints

Relapse-free survival (RFS) was defined as the period from the date of capecitabine administration to the date of radiographic recurrence or death from any cause. Overall survival (OS) was defined as the period from the date of capecitabine administration to the date of death from any cause. Patients who were still alive as well as those without documented radiographic recurrence were censored at the date of the last follow-up. The primary and secondary endpoints were RFS and OS, respectively.

Statistical analysis

RFS and OS in the H₂RA and non-H₂RA groups were estimated using the Kaplan–Meier method; confidence intervals (CIs) were calculated using the complementary log-log transformation and Greenwood's formula. The follow-up period was analyzed using reverse Kaplan–Meier estimates [18]. Subsequently, a multivariable Cox proportional hazards model was applied to compare the differences between the two groups. Hazard ratios (HRs) and 95% CIs were presented. Potential explanatory variables concerning patient background including chemotherapy regimen (CapeOX vs. capecitabine), concomitant use of H₂RAs (yes vs. no), age (10-year intervals), sex (male vs. female), primary site (right-sided colon vs. others (left-sided colon and/or rectal)), cancer stage (III high-risk (T4, N2, or both cancers) vs. III low risk (T1, T2, or T3, and N1 cancers) vs. II), and RDI (10% intervals) were included as covariates in the multivariable model [19–21]. To account for indication bias due to the lack of randomization, propensity score-adjusted analyses were performed using the following: 1) a multivariable model including the propensity score as an additional covariate, and 2) an inverse probability of treatment weighting (IPTW) method [22, 23]. The propensity score of H₂RA co-administration was

estimated for each patient using a logistic regression model [24]. According to the recommendation of the American Statistical Association [25, 26], a $P < 0.05$ should be avoided when interpreting P -values; therefore, we interpreted the results on the basis of point estimates with their CIs. Furthermore, to supplement conventional CIs, we performed a *post-hoc* analysis using the Cox model re-expressed in a Bayesian statistical framework. We computed the Bayesian posterior probability [27] of HR < 1 based on a non-informative prior distribution as a reference to evaluate the hypotheses concerning the direction and magnitude of the unknown HR via the Cox model. We did not impute any missing data. All statistical analyses were performed using SAS version 9.4 and JMP version 16.2.0 (SAS Institute, Cary, NC, USA).

Ethics statement

Ethical approval was provided by the National Cancer Center Institutional Review Board (Approval No. 2019-294), ethics committee of the Tochigi Cancer Center (Approval No. 20-A001), medical review board of Gifu University Graduate School of Medicine (Approval No. 2020-069), ethical committee of Osaka City University Graduate School of Medicine (Approval No. 2020-042), ethics committee of the Gunma Prefectural Cancer Center (Approval No. 405-02012), ethical review board of Osaka University Hospital (Approval No. 20008), Nagoya City University East/West Medical Center Institutional Review Board (Approval No. 20-04-423-03), ethics review committee of the Miyagi Cancer Center (Approval No. 2020-003), and the ethics committee of the Yokohama Minami Kyosai Hospital (Approval No. 1-20-4-1) in Japan. This study was conducted in accordance with the Declaration of Helsinki and the Ethical Guidelines for Medical and Health Research involving Human Subjects promulgated by the Ministry of Education, Culture, Sports, Science, and Technology and the Ministry of Health, Labour, and Welfare of Japan. Acquiring written or oral informed consent from participants was waived considering the retrospective nature of the study. Therefore, we used an opt-out method through the official website of each participating institution.

Results

Patient characteristics

The patient flowchart illustrating the enrollment process is shown in **Figure 1**. Of the 844 patients who were initially screened, 238 were withdrawn from the analysis on the basis of the exclusion criteria as detailed in the Methods section. Subsequently, 54 patients who had received PPIs were further excluded from the analysis. Thus, data pertaining to 552

patients were evaluated in this study, of which 30 (5.4%) received H₂RAs; of these 30 patients, 20 (66.7%) and 10 (33.3%) received capecitabine monotherapy and the CapeOX regimen, respectively.

The baseline patient characteristics are listed in **Table 1**. The median age of the patients was 63 years (interquartile range (IQR): 55–70 years), of which 305 (55.3%) were men, and 161 (29.2%) had right-sided colon cancer. In the H₂RA group, the median duration of concomitant H₂RA use was 100.0% (IQR: 87.5%–100%).

Endpoints

The median duration of follow-up was 6.1 years (95% CI: 5.9–6.3 years). Overall, there were 110 relapse events and 66 deaths. Among patients who received capecitabine monotherapy (2,500 mg/m², days 1–14, every 3 weeks, 8 cycle), the median RDI of capecitabine was 81.1% (IQR: 64.2–87.8%) and 79.3% (IQR: 65.0–91.3%) in the H₂RA and non-H₂RA groups, respectively. Among patients who received the CapeOX regimen (capecitabine at 2,000 mg/m² on days 1–14, plus oxaliplatin at 130 mg/m² on day 1, every 3 weeks, 8 cycles), the median RDI of capecitabine was 84.9% (IQR: 79.1–91.1%) and 75.1%

(IQR: 62.5–87.4%) in the H₂RA and non-H₂RA groups, respectively, and the median RDI of oxaliplatin was 72.4% (IQR: 59.6–81.8%) and 66.3% (IQR: 45.6–78.9%) in the H₂RA and non-H₂RA groups, respectively.

As shown in **Figure 2**, in the entire study population (capecitabine monotherapy and CapeOX regimen), the RFS at five years was 76.7% (95% CI: 57.2–88.1%) and 79.8% (95% CI: 76.0–83.0%) in the H₂RA and non-H₂RA groups, respectively. The OS at five years was 90.0% (95% CI: 72.1–96.7%) and 90.4% (95% CI: 87.5–92.7%) in the H₂RA and non-H₂RA groups, respectively. According to the univariable analysis, there were no significant differences in RFS and OS between the H₂RA and non-H₂RA groups (RFS: HR, 1.28; 95% CI: 0.59–2.74; *P* = 0.533 and OS: HR, 1.09; 95% CI: 0.40–3.00; *P* = 0.867, respectively).

As shown in **Table 2**, the multivariable Cox proportional hazards model and propensity score-adjusted analyses revealed that the co-administration of H₂RAs was associated with shortened RFS to a small degree (HR, 1.12; 95% CI: 0.52–2.42, *P* = 0.772 and HR, 1.18; 95% CI: 0.55–2.53, *P* = 0.677, respectively). In contrast, OS was inconsistent as compared with RFS (**Table 3**).

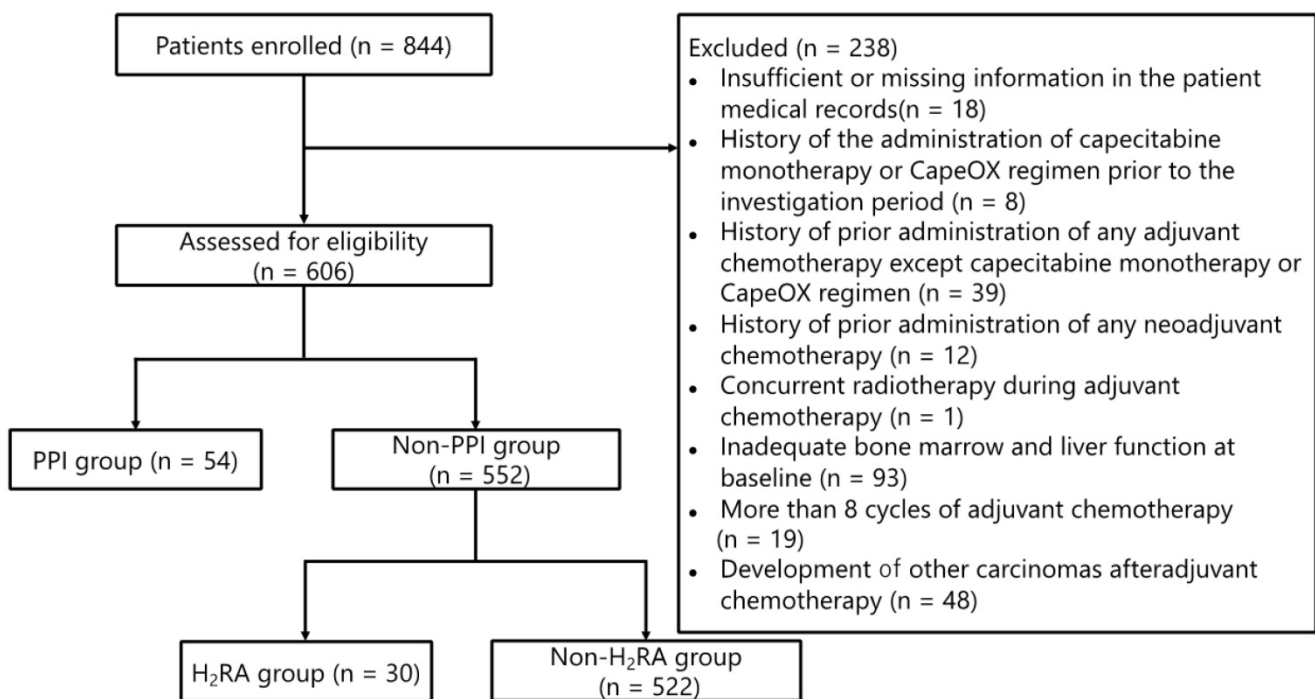


Figure 1. Patient enrollment flowchart. Abbreviations: CapeOX: capecitabine and oxaliplatin; PPI: proton pump inhibitor; H₂RA: Histamine H₂ receptor antagonist

Table 1. Baseline patient characteristics

Characteristic	All (n = 552)	H ₂ RA group (n = 30) ^a		Non-H ₂ RA group (n = 522) ^a	
		Capecitabine monotherapy (n = 20)	CapeOX (n = 10)	Capecitabine monotherapy (n = 400)	CapeOX (n = 122)
Age, median (IQR), y	63 (55-70)	68 (60-74)	59 (53-63)	64 (57-71)	60 (50-67)
Sex					
Male	305 (55.3)	12 (60.0)	6 (60.0)	214 (53.5)	73 (59.8)
Female	247 (44.7)	8 (40.0)	4 (40.0)	186 (46.5)	49 (40.2)
Primary site ^a					
Right-sided colon	161 (29.2)	2 (10.0)	6 (60.0)	121 (30.3)	32 (26.2)
Left-sided colon	200 (36.2)	12 (60.0)	2 (20.0)	149 (37.3)	37 (30.3)
Rectum	191 (34.6)	6 (30.0)	2 (20.0)	130 (32.5)	53 (43.4)
Stage					
II	66 (12.0)	1 (5.0)	1 (10.0)	59 (14.8)	5 (4.1)
IIIA	96 (17.4)	4 (20.0)	1 (10.0)	77 (19.3)	14 (11.5)
IIIB	315 (57.1)	12 (60.0)	6 (60.0)	225 (56.3)	72 (59.0)
IIIC	75 (13.6)	3 (15.0)	2 (20.0)	39 (10.0)	31 (25.4)
Co-administered H ₂ RA					
Famotidine		15 (75.0)	7 (70.0)		
Ranitidine		5 (25.0)	0 (0.0)		
Lafutidine		0 (0.0)	3 (30.0)		

Abbreviations: CapeOX: capecitabine and oxaliplatin; IQR: interquartile range; H₂RA: histamine H₂ receptor antagonist; y: years.

^a Percentages may not add up to 100 because of rounding.

Table 2. Multivariable Cox proportional hazards model, propensity score-adjustment, and IPTW analyses of the effect of the co-administration of H₂RA on RFS with capecitabine monotherapy and the CapeOX regimen

Variables	No.	Event	Censored	Multivariable analysis		Adjusted for propensity score			IPTW			
				HR (95% CI)	P	Posterior probability	HR (95% CI)	P	Posterior probability	HR (95% CI)	P	Posterior probability
H ₂ RA												
Yes	30	7	23	1.12 (0.52-2.42)	0.772	0.435	1.18 (0.55-2.53)	0.677	0.391	0.76 (0.32-1.80)	0.527	0.776
No	522	103	419	1			1			1		
Age (10-year intervals)	-	-	-	0.88 (0.74-1.04)	0.130							
Sex												
Male	305	69	236	1.43 (0.97-2.11)	0.071							
Female	247	41	206	1								
Primary site												
Right-sided colon	161	34	127	1.05 (0.69-1.58)	0.831							
Others	391	76	315	1								
Stage												
III high-risk	179	59	120	2.15 (1.15-4.00)	0.016							
III low-risk	307	39	268	0.70 (0.37-1.35)	0.289							
II	66	12	54	1								

Abbreviations: H₂RA: histamine H₂ receptor antagonist; CapeOX: capecitabine and oxaliplatin; CI: confidence interval; HR: hazard ratio; IPTW: inverse probability of treatment weighting; RFS: relapse-free survival.

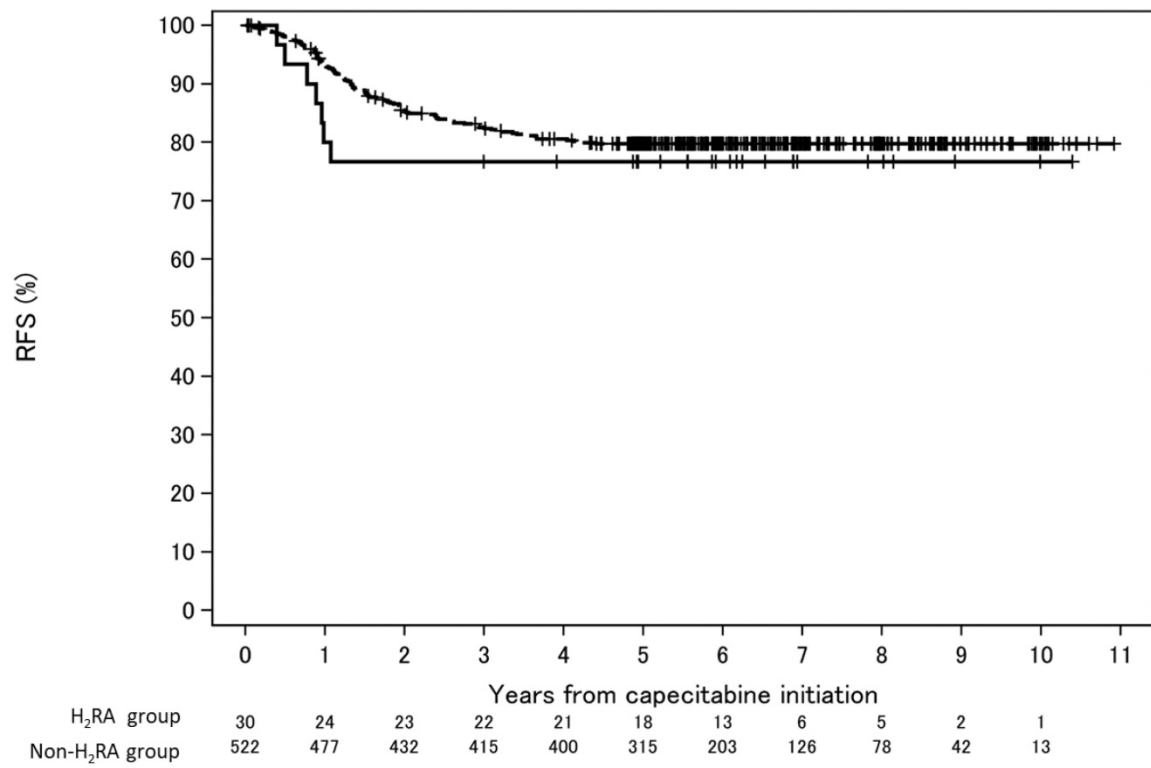
A comparison between the capecitabine monotherapy and the CapeOX regimen groups is shown in **Tables 4 and 5**. The multivariable Cox proportional hazards model and propensity score-adjusted analyses showed that the co-administration of H₂RAs was relatively associated with a relatively poor RFS in the capecitabine monotherapy group (HR, 2.01; 95% CI: 0.86-4.70; *P* = 0.108 and HR, 1.81; 95% CI: 0.77-4.22; *P* = 0.172, respectively), although no significant difference was observed. In contrast, inconsistent results were obtained for the CapeOX regimen group with respect to RFS.

In the capecitabine monotherapy population, the Bayesian posterior probability showed that the HRs for the RFS of the H₂RA group relative to that of the non-H₂RA group would be < 1.00, ranging from 8.4% to 47.0% (**Table 4**). In the CapeOX regimen population, the Bayesian posterior probability showed that the HRs for the RFS of the H₂RA group relative to that of the non-H₂RA group would be < 1.00, ranging from 87.0% to 96.6% (**Table 5**).

Discussion

In the present study, we found that in real-world clinical practice, the effectiveness of capecitabine monotherapy and CapeOX regimen is unlikely to be affected by the combination of H₂RAs in early-stage CRC patients. However, multivariable Cox proportional hazards model and propensity score-adjusted analyses showed that the co-administration of H₂RAs was associated with a poor RFS among those receiving capecitabine monotherapy (HR, 2.01; 95% CI: 0.86-4.70 and HR, 1.81; 95% CI: 0.77-4.22, respectively). The HR of RFS was higher for capecitabine monotherapy and tended to fall in the overall population (capecitabine monotherapy and CapeOX). The difference in HR may have been attributed to the increased intensity of treatment with the addition of oxaliplatin and the different dosage of capecitabine in the two treatment regimens.

(A)



(B)

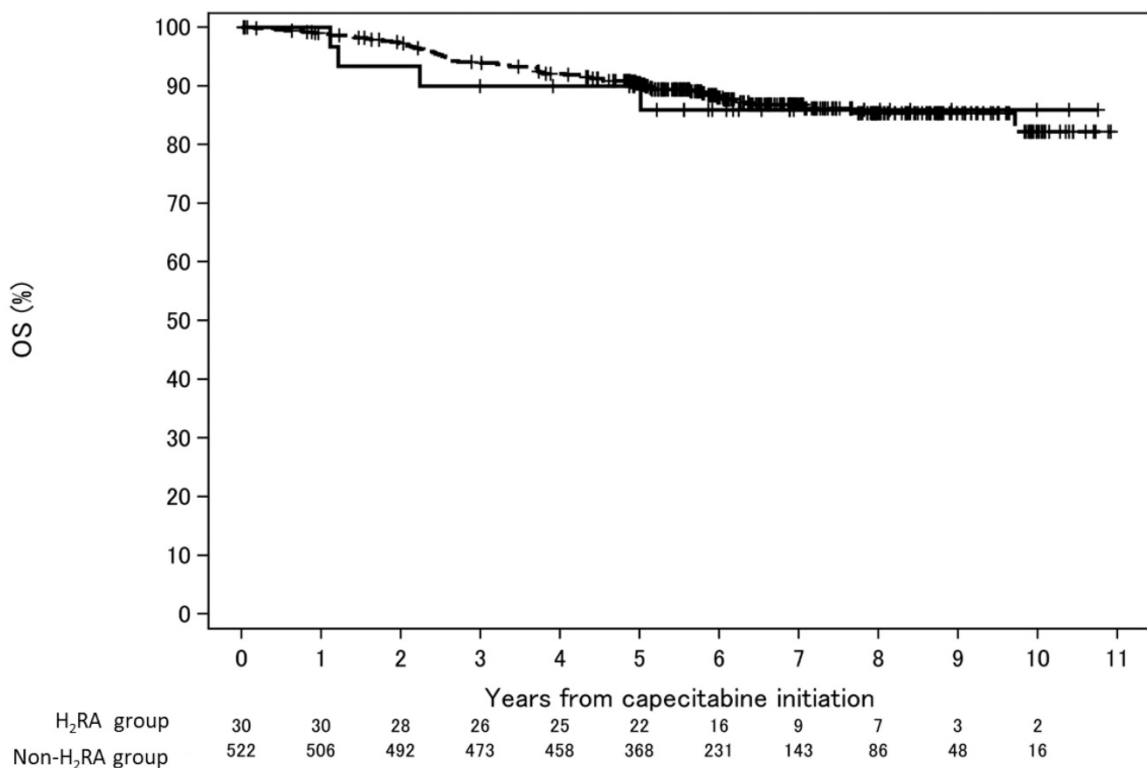


Figure 2. Kaplan–Meier survival curves estimate according to the absence or presence of H₂RA co-administration. The solid and dashed lines are H₂RA group and non-H₂RA group, respectively. (A) Relapse-free survival. (B) Overall survival. Abbreviations: H₂RA: histamine H₂ receptor antagonist; RFS: relapse-free survival; OS: overall survival

Table 3. Multivariable Cox proportional hazards model, propensity score-adjustment, and IPTW analyses of the effect of the co-administration of H₂RA on OS with capecitabine monotherapy and the CapeOX regimen

Variables	No.	Event	Censored	Multivariable analysis			Adjusted for propensity score			IPTW			
				HR (95% CI)	P	Posterior probability	HR (95% CI)	P	Posterior probability	HR (95% CI)	P	Posterior probability	
H ₂ RA	Yes	30	4	26	0.82 (0.30-2.27)	0.704	0.699	0.90 (0.32-2.49)	0.836	0.644	0.66 (0.22-1.96)	0.458	0.816
	No	522	62	460	1		1	1		1			
Age (10-year intervals)	-	-	-	-	0.92 (0.73-1.15)	0.450							
Sex	Male	305	44	261	1.74 (1.04-2.91)	0.035							
	Female	247	22	225	1								
Primary site	Right-sided colon	161	24	137	1.33 (0.79-2.21)	0.281							
	Others	391	42	349	1								
Stage	III high-risk	179	42	137	2.80 (1.19-6.61)	0.018							
	III low-risk	307	18	289	0.65 (0.26-1.64)	0.362							
	II	66	6	60	1								

Abbreviations: H₂RA: histamine H₂ receptor antagonist; CapeOX: capecitabine and oxaliplatin; CI: confidence interval; HR: hazard ratio; IPTW: inverse probability of treatment weighting; OS: overall survival.

Table 4. Multivariable Cox proportional hazards model, propensity score-adjustment, and IPTW analyses of the effect of the co-administration of H₂RA on RFS with capecitabine monotherapy

Variables	No.	Event	Censored	Multivariable analysis			Adjusted for propensity score			IPTW			
				HR (95% CI)	P	Posterior probability	HR (95% CI)	P	Posterior probability	HR (95% CI)	P	Posterior probability	
H ₂ RA	Yes	20	6	14	2.01 (0.86-4.70)	0.108	0.084	1.81 (0.77-4.22)	0.172	0.126	1.12 (0.31-4.04)	0.864	0.470
	No	400	71	329	1		1	1		1			
Age (10-year intervals)	-	-	-	-	0.85 (0.69-1.04)	0.115							
Sex	Male	226	47	179	1.45 (0.92-2.31)	0.113							
	Female	194	30	164	1								
Primary site	Right-sided colon	123	24	99	1.13 (0.68-1.87)	0.631							
	Others	297	53	244	1								
Stage	III high-risk	110	35	75	2.28 (1.12-4.63)	0.023							
	III low-risk	250	32	218	0.77 (0.38-1.57)	0.477							
	II	60	10	50	1								

Abbreviations: H₂RA: histamine H₂ receptor antagonist; CI: confidence interval; HR: hazard ratio; IPTW: inverse probability of treatment weighting; RFS: relapse-free survival.

Table 5. Multivariable Cox proportional hazards model, propensity score-adjustment, and IPTW analyses of the effect of the co-administration of H₂RA on RFS with the CapeOX regimen

Variables	No.	Event	Censored	Multivariable analysis			Adjusted for propensity score			IPTW			
				HR (95% CI)	P	Posterior probability	HR (95% CI)	P	Posterior probability	HR (95% CI)	P	Posterior probability	
H ₂ RA	Yes	10	1	9	0.27 (0.03-2.02)	0.200	0.962	0.27 (0.04-2.05)	0.206	0.966	0.52 (0.07-4.20)	0.543	0.870
	No	122	32	90	1		1	1		1			
Age (10-year intervals)	-	-	-	-	0.95 (0.69-1.31)	0.740	-						
Sex	Male	79	22	57	1.33 (0.64-2.74)	0.446							
	Female	53	11	42	1								
Primary site	Right-sided colon	38	10	28	1.14 (0.53-2.46)	0.736							
	Others	94	23	71	1								
Stage	III high-risk	69	24	45	0.98 (0.22-4.35)	0.979							
	III low-risk	57	7	50	0.29 (0.06-1.47)	0.136							
	II	6	2	4	1								

Abbreviations: H₂RA: histamine H₂ receptor antagonist; CI: confidence interval; CapeOX: capecitabine and oxaliplatin; HR: hazard ratio; IPTW: inverse probability of treatment weighting; RFS: relapse-free survival.

To date, few studies have examined the influence of H₂RAs on the effectiveness of capecitabine therapy. Rhinehart et al. [4] observed that the co-administration of antacids (PPIs and H₂RAs) affects the effectiveness of capecitabine, but the number of H₂RAs users in that study was small in two cases. In a similar study, Kichenadasse et al. [12] reported no association between H₂RA co-administration and worse OS and PFS (n = 362). The results were obtained from six randomized clinical trials, but patients with early-stage CRC were not included. In both the above-mentioned studies, the difference in RDI between the H₂RA and non-H₂RA groups was unclear, which may have affected the results. Notably, the present study evaluated the RDI of capecitabine; the difference in the RDI of capecitabine between the H₂RA and non-H₂RA groups was only 1.8% in the capecitabine monotherapy-treated population (higher in the H₂RA user group). Cancer patients may be prescribed H₂RAs to reduce gastrointestinal symptoms; however, it was not clear whether this led to an increase in the RDI. The other known risk factors for recurrence after adjuvant chemotherapy in CRC include tumor invasiveness (T) and lymph node status (N) [28, 29]. To ascertain the impact of these factors, sensitivity analyses were performed with concomitant H₂RA (yes vs. no), age (10-year interval), sex (male vs. female), primary site (right-sided colon vs. other), chemotherapy regimen (CapeOX vs. capecitabine), and cancer stage (III high-risk (T4, N2, or both cancers) vs. III low risk (T1, T2, or T3 and N1 cancers) vs. II) as covariates. The number of H₂RA-treated patients in this study was relatively small (n = 30), but the overall study population was large (n = 552); the study included several cancer centers, university hospitals, and community hospitals. To the best of our knowledge, this is the first study to clarify whether the co-administration of H₂RAs affects the effectiveness of capecitabine therapy in patients with early-stage CRC in a real-world setting, and therefore our results have considerable clinical implications.

Previous studies have reported that the co-administration of PPIs may have a negative impact on the effectiveness of capecitabine in patients with early-stage or advanced CRC and gastroesophageal cancer [2-6]. The results of this study suggest that although PPIs and H₂RA are antacids, their impact on capecitabine therapy differs. The therapeutic effect of capecitabine therapy may be maintained by replacing PPIs with H₂RAs. To determine whether this is possible, it is necessary to clarify the mechanism by which the PPIs combination reduces the effect of capecitabine. This evidence suggests that acid-reducing agents (ARAs) may reduce the

effectiveness of capecitabine treatment. Several hypotheses have been proposed regarding the mechanism by which PPIs attenuate the effect of capecitabine. One hypothesis states that a DDI between the PPIs and capecitabine leads to reduced capecitabine efficacy. According to this hypothesis, capecitabine is sensitive to changes in pH, and a PPI-induced increase in gastric pH reduces the absorption of capecitabine. In previous studies, ARAs have been shown to affect the effectiveness of oral anticancer agents [30]. However, according to a systematic review of DDIs pertaining to ARAs [31], elevated gastric pH is a common characteristic of all three classes of ARAs (antacids, H₂RAs, and PPIs). Therefore, clinically important gastric pH-mediated interactions should be observed with all ARAs, and if PPIs reduce the effect of capecitabine due to changes in pH, then H₂RAs should have the same result. Several *in vivo* studies have examined the influence of ARAs on the pharmacokinetics of capecitabine. *In vivo* studies on DDIs between capecitabine and ARAs have reported no interaction between capecitabine and Maalox® (dried aluminum hydroxide gel, magnesium hydroxide) in 12 patients with solid tumors [32, 33], and no interaction between capecitabine and rabeprazole in patients with CRC [11]. Accordingly, PPIs may be less likely to show gastric pH-dependent interactions with capecitabine. Another hypothesis suggests that the use of PPIs itself may affect CRC. It has been reported that the suppression of gastric acidity by PPIs and H₂RAs led to hypergastrinemia and induced the proliferation of colorectal epithelium and progression of colonic adenoma in *in vivo* models [34-36]. Additionally, while several case-control studies have concluded that PPI use was associated with an increased risk of CRC [13], one cohort study reported no increase in CRC risk [37]. The above studies agree that H₂RA administration is not a risk factor for CRC. However, an increased risk of gastric cancer was reported with H₂RA use [38]. Thus, risk evaluation pertaining to these drug classes must be performed and clarified by future studies. It is necessary to confirm that the concentrations of capecitabine and its metabolites are adequately high in patients receiving concomitant PPIs and H₂RAs, and examine the *in vivo* pharmacokinetics of these drugs and evaluate differences among these and other drugs that are used to treat the same indication. The effect of the timing of the dose administration on DDIs should also be clarified. It is possible that multiple mechanisms are involved in the PPIs-induced reduction of capecitabine efficacy, and comorbidities may play a role as well. Therefore, prospective studies are needed to explore the mechanism underlying the reduction of capecitabine

efficacy by PPIs. While the mechanism underlying this phenomenon could not be clarified in this study.

The present study has some limitations. First, it was a retrospective, observational study rather than a prospective study. The present study evaluated patients according to the guidelines of the Japanese Society for Cancer of Colon and Rectum (JSCCR); these guidelines are used during the treatment of CRC in actual clinical practice in Japan. Therefore, we excluded 93 patients whose major organ functions were not preserved at the time of therapy initiation. The JSCCR guidelines were published in 2009, 2010, and 2014 [39, 40]. The new additions in the JSCCR guidelines 2014 state that postoperative chemotherapy should be started 4–8 weeks after surgery, and that the CapeOX regimen has to be covered by insurance. As this is a retrospective study, information bias cannot be ruled out. Thus, multivariable analysis was performed to reduce the effect of potential confounding factors that were related to patient characteristics. Second, the sample sizes of the H₂RA and non-H₂RA groups were not equal. Notably, the number of H₂RA-treated patients was relatively small, due to which it might not have been evaluated satisfactorily. We were unable to evaluate the OS in the population that received the CapeOX regimen due to the small number of events. Furthermore, there was a large variability regarding the Bayesian posterior probability shown in Tables 2 (range: 0.388–0.607) and 4 (range: 0.084–0.461), which might be an overestimation of IPTW owing to the small number of H₂RA-treated patients. Third, the H₂RA data were based on prescription information from the medical records; therefore, information on whether the patients purchased and used an over-the-counter drug was not available. Furthermore, it was unclear whether the patients took H₂RAs during capecitabine treatment and whether medication adherence was adequate. Fourth, the baseline laboratory data prior to chemotherapy represented the latest value in this study, and was therefore unable to identify the exact day within a given number of days. Fifth, we did not collect baseline CEA level or comorbidity data and therefore were not included as covariates in the multivariable model; the primary reasons for not collecting these data are as follows: First, information regarding comorbidity was not available in every institution because of the retrospective nature of the study. Second, patients with severe complications did not undergo surgery or postoperative adjuvant chemotherapy; hence, we focused on RFS, which included death due to any reason, rather than cancer-specific recurrence and death. Sixth, the frequency and timing of diagnostic imaging varies

between facilities and may therefore affect the diagnosis of recurrence, which is a potentially confounding factor. Future prospective studies with larger sample sizes are necessary to confirm the study findings, evaluate the pharmacokinetic aspects of the drugs, and explore the mechanism underlying the effect of ARAs on the effectiveness of capecitabine therapy.

Conclusions

The findings of this study suggest that the concomitant use of H₂RAs in patients with early-stage CRC receiving capecitabine therapy is unaffected by an increased risk of recurrence. Our data provide preliminary evidence for an association between the co-administration of H₂RAs and capecitabine efficacy in Japanese patients with stage II–III CRC.

Abbreviations

ARAs: acid-reducing agents; CapeOX: capecitabine and oxaliplatin; CI: confidence interval; CRC: colorectal cancer; DDIs: drug-drug interactions; H₂RAs: Histamine H₂ receptor antagonists; HR: hazard ratio; ; IPTW: inverse probability of treatment weighting; IQR: interquartile range; JSCCR: Japanese Society for Cancer of Colon and Rectum; OS: overall survival; PPIs: proton pump inhibitors; RDI: relative dose intensity; RFS: relapse-free survival.

Acknowledgments

We are grateful to all the participants and medical staff of the nine participating institutions, including the National Cancer Center Hospital, Tochigi Cancer Center, Gifu University Hospital, Osaka City University Hospital, Gunma Prefectural Cancer Center, Osaka University Hospital, Nagoya City University West Medical Center, Miyagi Cancer Center, and Yokohama Minami Kyousai Hospital, who were involved in this study. We would like to thank Editage (www.editage.com) for English language editing.

Funding

This work was supported in part by the Keio Gijuku Fukuzawa Memorial Fund for the Advancement of Education and Research (2021) and the Policy-based Medical Services Foundation (2021) in Japan. The funders had no role in the study's design, collection, analysis, and interpretation of the data, writing of the manuscript, or the decision to submit the manuscript for publication.

Author Contributions

Conception/design: Yoshiko Kitazume, Hitoshi Kawazoe, and Hironobu Hashimoto.

Collection and/or assembly of data: Tomoko Yamazaki, Yoshiko Kitazume, Hirotohi Iihara, Hironori Fujii, Masaya Takahashi, Takahiro Arai, Yasushi Murachi, Yumiko Sato, Takahiro Mikami, Koji Hashiguchi, Tomoe Yoshizawa, Katsuyuki Takahashi, Yuki Yoshiyoshi Fujita, Yuki Hosokawa, Issei Morozumi, Masami Tsuchiya, Atsushi Yokoyama, and Hironobu Hashimoto.

Data analysis and interpretation: Ryuji Uozumi and Hitoshi Kawazoe.

Manuscript writing: Tomoko Yamazaki and Hitoshi Kawazoe.

Final approval of the manuscript: Tomoko Yamazaki, Ryuji Uozumi, Hitoshi Kawazoe, Yoshiko Kitazume, Hirotohi Iihara, Hironori Fujii, Masaya Takahashi, Takahiro Arai, Yasushi Murachi, Yumiko Sato, Takahiro Mikami, Koji Hashiguchi, Tomoe Yoshizawa, Katsuyuki Takahashi, Yuki Yoshiyoshi Fujita, Yuki Hosokawa, Issei Morozumi, Masami Tsuchiya, Atsushi Yokoyama, Hironobu Hashimoto, and Tetsuya Furukawa.

Competing Interests

Ryuji Uozumi: Eisai, Sawai Pharmaceutical, EP Croit (H). **Hitoshi Kawazoe:** Eli Lilly (RF).

The other authors have declared that no competing interest exists.

References

- Sung H, Ferlay J, Siegel RL, et al. Global cancer statistics 2020: GLOBOCAN estimates of incidence and mortality worldwide for 36 cancers in 185 countries. *CA Cancer J Clin.* 2021; 71: 209-49.
- Sun J, Ilich AI, Kim CA, et al. Concomitant administration of proton pump inhibitors and capecitabine is associated with increased recurrence risk in early stage colorectal cancer patients. *Clin Colorectal Cancer.* 2016; 15: 257-63.
- Chu MP, Hecht JR, Slamon D, et al. Association of proton pump inhibitors and capecitabine efficacy in advanced gastroesophageal cancer: secondary analysis of the TRIO-013/LOGiC randomized clinical trial. *JAMA Oncol.* 2017; 3: 767-73.
- Rhinehart HE, Phillips MA, Wade N, et al. Evaluation of the clinical impact of concomitant acid suppression therapy in colorectal cancer patients treated with capecitabine monotherapy. *J Oncol Pharm Pract.* 2019; 25: 1839-45.
- Kim SY, Lee JS, Kang J, et al. Proton pump inhibitor use and the efficacy of chemotherapy in metastatic colorectal cancer: a post hoc analysis of a randomized phase III trial (AXEPT). *Oncologist.* 2021; 26: e954-62.
- Kitazume Y, Kawazoe H, Uozumi R, et al. Proton pump inhibitors effect on capecitabine efficacy in patients with stage II-III colorectal cancer: a multicenter retrospective study. *Sci Rep.* 2022; 12: 6561.
- Fox RK, Muniraj T. Pharmacologic therapies in gastrointestinal diseases. *Med Clin North Am.* 2016; 100: 827-50.
- Numico G, Fusco V, Franco P, et al. Proton pump inhibitors in cancer patients: how useful they are? A review of the most common indications for their use. *Crit Rev Oncol Hematol.* 2017; 111: 144-51.
- Wong GG, Ha V, Chu MP, et al. Effects of proton pump inhibitors on FOLFOX and CapeOx regimens in colorectal cancer. *Clin Colorectal Cancer.* 2019; 18: 72-9.
- Cheng V, Lemos M, Hunter N, et al. Concomitant use of capecitabine and proton pump inhibitors - Is it safe? *J Oncol Pharm Pract.* 2019; 25: 1705-11.
- Sekido M, Fujita KI, Kubota Y, et al. Rabepazole intake does not affect systemic exposure to capecitabine and its metabolites, 5'-deoxy-5-fluorocytidine, 5'-deoxy-5-fluorouridine, and 5-fluorouracil. *Cancer Chemother Pharmacol.* 2019; 83: 1127-35.
- Kichenadasse G, Miners JO, Mangoni AA, et al. Proton pump inhibitors and survival in patients with colorectal cancer receiving fluoropyrimidine-based chemotherapy. *J Natl Compr Canc Netw.* 2021; 19: 1037-44.
- Chubak J, Boudreau DM, Rulyak SJ, et al. Colorectal cancer risk in relation to use of acid suppressive medications. *Pharmacoepidemiol Drug Saf.* 2009; 18: 540-4.
- Cheung KS, Leung WK. Long-term use of proton-pump inhibitors and risk of gastric cancer: a review of the current evidence. *Therap Adv Gastroenterol.* 2019; 12: 1-11.
- Lai SW, Liao KF, Lai HC, et al. Use of proton pump inhibitors correlates with increased risk of colorectal cancer in Taiwan. *Asia Pac J Clin Oncol.* 2013; 9: 192-3.
- von Elm E, Altman DG, Egger M, et al. The Strengthening the Reporting of Observational Studies in Epidemiology (STROBE) statement: guidelines for reporting observational studies. *Lancet.* 2007; 370: 1453-7.
- Brierley JD, Gospodarowicz MK, Wittekind C. *TNM Classification of Malignant Tumours*, 8th ed. Hoboken, USA: Wiley-Blackwell; 2017.
- Korn EL. Censoring distributions as a measure of follow-up in survival analysis. *Stat Med.* 1986; 5: 255-60.
- Kim SE, Paik HY, Yoon H, et al. Sex- and gender-specific disparities in colorectal cancer risk. *World J Gastroenterol.* 2015; 21: 5167-75.
- Lee GH, Malietzis G, Askari A, et al. Is right-sided colon cancer different to left-sided colorectal cancer? - a systematic review. *Eur J Surg Oncol.* 2015; 41: 300-8.
- Hashiguchi Y, Muro K, Saito Y, et al. Japanese Society for Cancer of the Colon and Rectum. Japanese Society for Cancer of the Colon and Rectum (JSCCR) guidelines 2019 for the treatment of colorectal cancer. *Int J Clin Oncol.* 2020; 25: 1-42.
- D'Agostino RB Jr. Propensity score methods for bias reduction in the comparison of a treatment to a non-randomized control group. *Stat Med.* 1998; 17: 2265-81.
- Xu S, Ross C, Raebel MA, et al. Use of stabilized inverse propensity scores as weights to directly estimate relative risk and its confidence intervals. *Value Health.* 2010; 13: 273-7.
- Rosenbaum PR, Rubin DB. The central role of the propensity score in observational studies for causal effects. *Biometrika.* 1983; 70: 41-55.
- Wasserstein RL, Lazar NA. The ASA statement on p-values: context, process, and purpose. *Am Stat.* 2016; 70: 129-33.
- Wasserstein RL, Schirm AL, Lazar NA. Moving to a world beyond "p < 0.05". *Am Stat.* 2019; 73: 1-19.
- Spiegelhalter DJ, Abrams KR, Myles JP. *Bayesian approaches to clinical trials and health-care evaluation.* New York, USA: John Wiley & Sons; 2004.
- Grothey A, Sobrero AF, Shields AF, et al. Duration of adjuvant chemotherapy for stage III colon cancer. *N Engl J Med.* 2018; 378: 1177-88.
- Yoshino T, Yamanaka T, Oki E, et al. Efficacy and long-term peripheral sensory neuropathy of 3 vs. 6 months of oxaliplatin-based adjuvant chemotherapy for colon cancer: the ACHIEVE phase 3 randomized clinical trial. *JAMA Oncol.* 2019; 5: 1574-81.
- Indini A, Petrelli F, Tomasello G, et al. Impact of use of gastric-acid suppressants and oral anti-cancer agents on survival outcomes: a systematic review and meta-analysis. *Cancers (Basel).* 2020; 12: 998.
- Patel D, Bertz R, Ren S, et al. A systematic review of gastric acid-reducing agent-mediated drug-drug interactions with orally administered medications. *Clin Pharmacokinet.* 2020; 59: 447-62.
- Reigner B, Verweij J, Dirix L, et al. Effect of food on the pharmacokinetics of capecitabine and its metabolites following oral administration in cancer patients. *Clin Cancer Res.* 1998; 4: 941-8.
- Reigner B, Clive S, Cassidy J, et al. Influence of the antacid Maalox on the pharmacokinetics of capecitabine in cancer patients. *Cancer Chemother Pharmacol.* 1999; 43: 309-15.
- Koh TJ, Dockray GJ, Varro A, et al. Overexpression of glycine-extended gastrin in transgenic mice results in increased colonic proliferation. *J Clin Invest.* 1999; 103: 1119-26.
- Watson SA, Morris TM, McWilliams DF, et al. Potential role of endocrine gastrin in the colonic adenoma carcinoma sequence. *Br J Cancer.* 2002; 87: 567-73.
- Watson SA, Smith AM. Hypergastrinemia promotes adenoma progression in the APCMin/+ mouse model of familial adenomatous polyposis. *Cancer Res.* 2001; 61: 625-31.
- Babic A, Zhang X, Morales-Oyarvide V, et al. Acid-suppressive medications and risk of colorectal cancer: results from three large prospective cohort studies. *Br J Cancer.* 2020; 123: 844-51.
- Ahn JS, Eom CS, Jeon CY, et al. Acid suppressive drugs and gastric cancer: a meta-analysis of observational studies. *World J Gastroenterol.* 2013; 19: 2560-8.

39. Watanabe T, Itabashi M, Shimada Y, et al. Japanese Society for Cancer of the Colon and Rectum. Japanese Society for Cancer of the Colon and Rectum (JSCCR) guidelines 2010 for the treatment of colorectal cancer. *Int J Clin Oncol.* 2012; 17: 1-29.
40. Watanabe T, Itabashi M, Shimada Y, et al. Japanese Society for Cancer of the Colon and Rectum. Japanese Society for Cancer of the Colon and Rectum (JSCCR) Guidelines 2014 for treatment of colorectal cancer. *Int J Clin Oncol.* 2015; 20: 207-39.