

Figure S1. Characteristics of the CircSETD3.

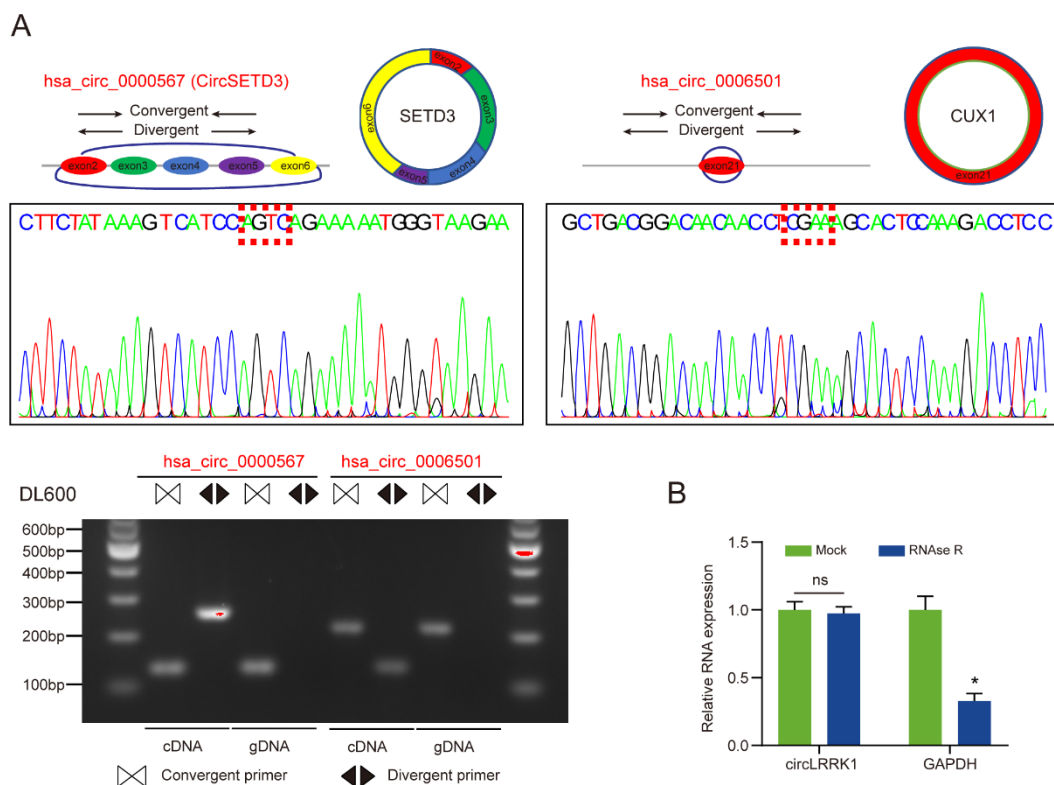


Table S1. All special primers were applied in our study.

Primer	Sequence
MiR-653	Forward: 5'-GTGTTGAAACAATCTCTACTG-3' Reverse: 5'-GAACATGTCTGCGTATCTC-3'
U6	Forward: Universal U6 Primer F (human) Reverse: Universal PCR Primer R
GAPDH	Forward: 5' GCATCTTCTTGTGCAGTGCC-3' Reverse: 5' TACGGCCAAATCCGTTTACA-3'
MiR-431	Forward: 5'-GCGGCGGTGTCTTGCAGGCCGTC-3' Reverse: 5'-ATCCAGTGCAGGGTCCGAGG-3'
Let-7g	Forward: 5'-ACACTCCAGCTGGGTGAGGTAGTAGTTTGTAC-3' Reverse: 5'-CTCAACTGGTGTCTGTGGA-3'
MiR-130a	Forward: 5'-GCGCGGATCCAGGCGGCAAAAGGAAGAGTGGTG-3' Reverse: 5'-CGGCGAATTCCACAAGCACTGCATACAGAAGTAG-3'
MiR-552	Forward: 5'-CGGCGAATTCCACAAGCACTGCATACAGAAGTAG-3' Reverse: 5'-CGAACGCTTACGAATTTG-3'
KLF6	Forward: 5' CACACAGGAGAAAAGCCTTACAGAT, 3' Reverse: 5' GTCAGACCTGGAGAAACACCTG-3'

GNAQ Forward: 5' -ATTGTGTCTTCCCTCC-3'

STYK1 Reverse: 5' -GGTTTCATGGACTCAG-3'

SULT1B1 Forward: 5' -CAGTGGGAAGGAGGGACTGA-3'
Reverse: 5' -TGCAGCCCAGTGAAATTGGA-3'

MiR-653 promoter Forward: 5' -CTCGTAATGCCAAGGATGTTTCA-3'
Reverse: 5' -CTTGATTTCTCCTTTGGATTCTCT-3'

SOWAHB Forward: 5' -CATACTCAGTGGGCTTGA -3'
Reverse: 5' -TGCCACCAACAGCAGTAGTC-3'

CircSETD3 (Divergent) Forward: 5' -GGGAGGGCGAGACTCAGACA-3'
Reverse: 5' -GCGACCGAGTTGACGAAGC-3'

CircSETD3 (Convergent) Forward: 5' -TTCAAACCCTCCCCAGTGAA-3'
Reverse: 5' -AGCTCACTGGTCAGGTTCAA-3'

hsa_circ_0006501 (Divergent) Forward: 5' -AAACTCAGAAATCTGGCACT-3'
Reverse: 5' -CATACTCTTCCCCTCTTTT-3'

hsa_circ_0006501 (Convergent) Forward: 5' -TGGACACCTACGGCATAACC-3'
Reverse: 5' -ACTCACTGGAACATCATCGGG-3

hsa_circ_0070039 (Divergent) Forward: 5' -CAGTGAGTCGGTGAAGAGCCT -3'
Reverse: 5' -GCTTGGTTATGCCGTAGGTGT -3

hsa_circ_0002273 (Divergent) Forward: 5' -TCGAAGCCAACAACAACAGT-3'
Reverse: 5' -GAGTCCAGTAGTGCCTGTGT-3

hsa_circ_0028255 (Divergent) Forward: 5' -AGCCTGTTTGTGTTTGCACCA-3'
Reverse: 5' -AGATGGGCTAGGTTGTGCTT-3
Forward: 5' -AGCCTGTTTGTGTTTGCACCA-3'
Reverse: 5' -ACTAGCAGGCGTAGGAGATG-3

Table S2. The detailed clinical information for dataset TCGA-COAD.

A0_S ampl es	A1 8_ Se x	A19 _He ight	A1 _O S	A20 _W eig ht	A2 1_ BM I	A22_histolo gical_type	A23_Tu mor_tis sue_site	A2 _Ev ent	A3 _T	A4 _N	A5 _M	A6 _St ag e
TCGA -AA- A00L	M AL E	Not Ava ilabl e	11 57	Not Available		Colon Adenocarci noma	Colon	Ali ve	T3	N0	M0	Sta ge IIA
TCGA - DM- A28H	M AL E	178	35 61	87	27. 45 86 5	Colon Adenocarci noma	Colon	Ali ve	T3	N2	M0	Sta ge IIIC
TCGA -AA-	M AL	Not Ava	31	Not Available		Colon Adenocarci	Colon	Ali ve	T2	N0	M0	Sta ge

A01V	E	ilable				noma						I
TCGA-AA-3693	FEMALE	Not Available	0	Not Available		Colon Adenocarcinoma	Colon	Alive	T4	N1	M1	Stage IV
TCGA-AA-A01R	MAL	Not Available	1065	Not Available		Colon Mucinous Adenocarcinoma	Colon	Alive	T3	N2	M0	Stage III
TCGA-CM-6675	MAL	187	397	93.9	26.85235	Colon Adenocarcinoma	Colon	Alive	T3	N2b	M1b	Stage IVB
TCGA-A6-6652	MAL	185	751	137.6	40.20453	Colon Adenocarcinoma	Colon	Alive	T3	N0	M1	Stage IVA
TCGA-CM-6166	FEMALE	153	669	45	19.22338	Colon Adenocarcinoma	Colon	Alive	T2	N0	M0	Stage I
TCGA-AA-A01F	MAL	Not Available	974	Not Available		Colon Adenocarcinoma	Colon	Alive	T3	N1	M0	Stage IIIB
TCGA-QG-A5YW	FEMALE	170	896	84.37	29.19377	Colon Mucinous Adenocarcinoma	Colon	Alive	T3	N2b	MX	Stage IIIC
TCGA-DM-A1DB	MAL	167	1348	75	26.89232	Colon Adenocarcinoma	Colon	Dead	T3	N0	M0	Stage IIA
TCGA-AA-3956	MAL	Not Available	1035	Not Available		Colon Adenocarcinoma	Colon	Alive	T3	N0	M0	Stage IIA
TCGA-AA-3833	FEMALE	Not Available	485	Not Available		Colon Adenocarcinoma	Colon	Alive	T3	N0	M0	Stage IIA
TCGA-	FEMALE	145	884	80.2	38.14	Colon Adenocarci	Colon	Alive	T2	N1a	M0	Stage

CM-5341	AL E				507	noma						IIIA
TCGA-D5-5540	MAL E	175	1706	83	27.10204	Colon Adenocarcinoma	Colon	Alive	T3	N0	M0	Stage IIA
TCGA-D5-6898	FEMAL E	164	229	100	37.18025	Colon Adenocarcinoma	Colon	Alive	T2	N0	M0	Stage I
TCGA-AA-A02O	MAL E	Not Available	28	Not Available		Colon Adenocarcinoma	Colon	Alive	T3	N0	M0	Stage II
TCGA-AA-A00Q	FEMAL E	Not Available	1278	Not Available		Colon Adenocarcinoma	Colon	Alive	T4	N1	M0	Stage IIIB
TCGA-AA-3666	MAL E	Not Available	61	Not Available		Colon Adenocarcinoma	Colon	Dead	T3	N1	M0	Stage III
TCGA-AZ-6608	FEMAL E	Not Available	59	Not Available		Colon Adenocarcinoma	Colon	Dead	T2	N1	M0	Stage IIIA
TCGA-A6-A565	FEMAL E	150	494	66.7	29.6444	Colon Mucinous Adenocarcinoma	Colon	Dead	T3	N2	MX	Stage IIIC
TCGA-D5-6537	MAL E	176	146	80	25.82645	Colon Adenocarcinoma	Colon	Dead	T3	N1a	MX	Stage IIIB
TCGA-A6-6142	FEMAL E	162.5	763	88	33.32544	Colon Adenocarcinoma	Colon	Alive	T3	N1a	M1a	Stage IVA
TCGA-AA-3855	MAL E	Not Available	975	Not Available		Colon Adenocarcinoma	Colon	Alive	T2	N0	M0	Stage I
TCGA-NH-	FEM	165.1	389	107	39.25	Colon Mucinous	Colon	Alive	T4b	N1b	M1b	Stage

A6GC	AL E				45 2	Adenocarci noma						IVB
TCGA -AA- 3814	FE M AL E	Not Ava ilabl e	0	Not Available		Colon Adenocarci noma	Colon	Ali ve	T3	N0	M0	Sta ge IIA
TCGA -AA- 3667	FE M AL E	Not Ava ilabl e	42 6	Not Available		Colon Adenocarci noma	Colon	Ali ve	T2	N0	M0	Sta ge I
TCGA -G4- 6303	FE M AL E	Not Ava ilabl e	20 03	69		Colon Adenocarci noma	Colon	De ad	T3	N1	M1	Sta ge IV
TCGA -AD- 6963	M AL E	193	83 4	107	28. 72 56	Colon Adenocarci noma	Colon	Ali ve	T3	N0	MX	
TCGA -AA- 3516	FE M AL E	Not Ava ilabl e	39 6	Not Available		Colon Mucinous Adenocarci noma	Colon	De ad	T3	N2	M0	Sta ge III
TCGA - CM- 6674	M AL E	167	39 4	80.7	28. 93 61 4	Colon Adenocarci noma	Colon	Ali ve	T3	N0	M0	Sta ge IIA
TCGA -F4- 6461	FE M AL E	151	33 8	57	24. 99 89	Colon Adenocarci noma	Colon	De ad	T4 b	N2	M0	Sta ge IIIC
TCGA -AA- 3979	M AL E	Not Ava ilabl e	73 0	Not Available		Colon Adenocarci noma	Colon	Ali ve	T3	N0	M0	Sta ge IIA
TCGA -AA- 3821	FE M AL E	Not Ava ilabl e	31	Not Available		Colon Mucinous Adenocarci noma	Colon	Ali ve	T2	N0	M0	Sta ge I
TCGA -AA- 3866	FE M AL E	Not Ava ilabl e	51 8	Not Available		Colon Adenocarci noma	Colon	Ali ve	T2	N0	M0	Sta ge I
TCGA -AA- A000	FE M AL	Not Ava ilabl	82 2	Not Available		Colon Adenocarci noma	Colon	Ali ve	T3	N2	M0	Sta ge IIIC

	E	e										
TCGA -F4- 6806	FE M AL E	172	12 60	70	23. 66 14 4	Colon Adenocarci noma	Colon	Ali ve	T2	N0	M0	Sta ge I
TCGA -G4- 6311	M AL E	173. 5	11 99	69.9	23. 22 08 6	Colon Adenocarci noma	Colon	Ali ve	T3	N1	MX	Sta ge III
TCGA -AA- 3862	M AL E	Not Ava ilabl e	91 4	Not Available	Colon Adenocarci noma	Colon	Ali ve	T3	N0	M0	Sta ge IIA	
TCGA -G4- 6309	FE M AL E	176	26 00	65.4	21. 11 31 2	Colon Adenocarci noma	Colon	Ali ve	T3	N1	M0	Sta ge IIIB
TCGA -CK- 5913	FE M AL E	Not Ava ilabl e	15 61	Not Available	Colon Adenocarci noma	Colon	Ali ve	T3	N0	MX	Sta ge IIA	
TCGA -A6- 5659	M AL E	180	92 6	117. 1	36. 14 19 8	Colon Adenocarci noma	Colon	Ali ve	T2	N0	M0	Sta ge I
TCGA -AA- 3517	M AL E	Not Ava ilabl e	11 86	Not Available	Colon Adenocarci noma	Colon	Ali ve	T3	N0	M0	Sta ge IIA	
TCGA -CA- 5796	FE M AL E	Not Ava ilabl e	37 7	Not Available	Colon Mucinous Adenocarci noma	Colon	Ali ve	T3	N0	M0	Sta ge IIA	
TCGA - DM- A1D9	FE M AL E	153	42 70	98	41. 86 42 4	Colon Adenocarci noma	Colon	Ali ve	T3	N0	M0	Sta ge IIA
TCGA -D5- 6536	M AL E	165	54 3	83	30. 48 66 9	Colon Adenocarci noma	Colon	Ali ve	T3	N0	M0	Sta ge IIA
TCGA -AA- A024	M AL E	Not Ava ilabl	11 88	Not Available	Colon Mucinous Adenocarci	Colon	De ad	T3	N0	M0	Sta ge II	

		e				noma						
TCGA -AA- A00J	M AL E	Not Ava ilabl e	54 9	Not Available		Colon Mucinous Adenocarci noma	Colon	Ali ve	T4	N1	M0	Sta ge IIIB
TCGA -AA- 3696	FE M AL E	Not Ava ilabl e	15 3	Not Available		Colon Adenocarci noma	Colon	De ad	T3	N1	M1	Sta ge IV
TCGA -F4- 6463	M AL E	174	10 87	62	20. 47 82 7	Colon Mucinous Adenocarci noma	Colon	Ali ve	T3	N0	M0	Sta ge IIA
TCGA -CK- 6748	FE M AL E	Not Ava ilabl e	61	Not Available		Colon Mucinous Adenocarci noma	Colon	Ali ve	T3	N1	M1	Sta ge IV
TCGA -AA- 3947	FE M AL E	Not Ava ilabl e	10 04	Not Available		Colon Mucinous Adenocarci noma	Colon	Ali ve	T4	N0	M0	Sta ge IIB
TCGA -A6- 5660	M AL E	170	88 8	94.4	32. 66 43 6	Colon Adenocarci noma	Colon	Ali ve	T3	N2 b	M0	Sta ge IIIC
TCGA -AA- A03F	FE M AL E	Not Ava ilabl e	0	Not Available		Colon Mucinous Adenocarci noma	Colon	Ali ve	T3	N2	M0	Sta ge III
TCGA - DM- A280	FE M AL E	159	23 6	63	24. 91 99	Colon Mucinous Adenocarci noma	Colon	De ad	T3	N0	M0	Sta ge IIA
TCGA -AA- A01I	M AL E	Not Ava ilabl e	94 3	Not Available		Colon Adenocarci noma	Colon	Ali ve	T2	N0	M0	Sta ge I
TCGA -AA- 3980	FE M AL E	Not Ava ilabl e	24 2	Not Available		Colon Adenocarci noma	Colon	Ali ve	T2	N0	M0	Sta ge I
TCGA -AA- 3675	M AL E	Not Ava ilabl	14 31	Not Available		Colon Adenocarci noma	Colon	Ali ve	T3	N0	M0	Sta ge II

		e										
TCGA -CK- 4947	FE M AL E	Not Ava ilabl e	53 4	Not Available		Colon Adenocarci noma	Colon	Ali ve	T4	N1	M0	Sta ge IIIB
TCGA -AA- A00 W	M AL E	Not Ava ilabl e	45 6	Not Available		Colon Adenocarci noma	Colon	Ali ve	T1	N0	M0	Sta ge I
TCGA -AA- 3531	FE M AL E	Not Ava ilabl e	10 35	Not Available		Colon Adenocarci noma	Colon	Ali ve	T3	N0	M0	Sta ge IIA
TCGA -AA- 3695	FE M AL E	Not Ava ilabl e	0	Not Available		Colon Adenocarci noma	Colon	Ali ve	T3	N2	M1	Sta ge IV
TCGA -NH- A6GB	FE M AL E	167. 6	47 6	83	29. 54 81 3	Colon Adenocarci noma	Colon	Ali ve	T3	N2 b	MX	Sta ge IIIC
TCGA -NH- A8F8	M AL E	172. 7	51 1	74	24. 81 11 6	Colon Adenocarci noma	Colon	De ad	T4 a	N2 b	M1	Sta ge IV
TCGA -AA- A004	M AL E	Not Ava ilabl e	42 4	Not Available		Colon Adenocarci noma	Colon	Ali ve	T3	N0	M0	Sta ge IIA
TCGA -AA- 3994	M AL E	Not Ava ilabl e	82 2	Not Available		Colon Mucinous Adenocarci noma	Colon	Ali ve	T3	N1	M0	Sta ge IIIB
TCGA - DM- A0XF	FE M AL E	170	11 62	85	29. 41 17 6	Discrepanc y	Colon	De ad	T3	N2	M0	Sta ge IIIC
TCGA -AA- 3858	M AL E	Not Ava ilabl e	94 5	Not Available		Colon Adenocarci noma	Colon	Ali ve	T2	N0	M0	Sta ge I
TCGA -G4- 6586	FE M AL	152. 1	10 89	63.2	27. 31 86	Colon Adenocarci noma	Colon	Ali ve	T3	N0	M0	Sta ge IIA

	E				1							
TCGA -QL- A97D	FE M AL E	Not Ava ilabl e	66 6	Not Available		Colon Adenocarci noma	Colon	Ali ve	T2	N0	MX	Sta ge I
TCGA -AZ- 6606	M AL E	Not Ava ilabl e	35 7	Not Available		Colon Adenocarci noma	Colon	De ad	T4	N2	M1	Sta ge IV
TCGA -CK- 6747	FE M AL E	Not Ava ilabl e	82 0	Not Available		Colon Adenocarci noma	Colon	Ali ve	T3	N0	MX	Sta ge IIA
TCGA - CM- 4750	FE M AL E	173	24 4	84.5	28. 23 34 9	Colon Adenocarci noma	Colon	Ali ve	T1	N1 b	M0	Sta ge IIIA
TCGA -A6- 3809	FE M AL E	160	99 6	102. 1	39. 88 28 1	Colon Mucinous Adenocarci noma	Colon	Ali ve	T4	N0	M0	Sta ge IIB
TCGA -AA- 3514	FE M AL E	Not Ava ilabl e	31	Not Available		Colon Adenocarci noma	Colon	Ali ve	T2	N0	M0	Sta ge I
TCGA - DM- A288	M AL E	170	42 7	85	29. 41 17 6	Colon Mucinous Adenocarci noma	Colon	De ad	T3	N2	M0	Sta ge IIIC
TCGA -AZ- 4684	M AL E	Not Ava ilabl e	19 77	94		Colon Adenocarci noma	Colon	Ali ve	T3	N2	M1	Sta ge IV A
TCGA -AA- 3538	FE M AL E	Not Ava ilabl e	79 1	Not Available		Colon Adenocarci noma	Colon	Ali ve	T2	N0	M0	Sta ge I
TCGA -AA- A01D	FE M AL E	Not Ava ilabl e	33 4	Not Available		Colon Mucinous Adenocarci noma	Colon	De ad	T3	N2	M0	Sta ge IIIC
TCGA -4T- AA8	FE M AL	167. 6	38 5	107. 956	38. 43 25	Colon Mucinous Adenocarci	Colon	Ali ve	T3	N0	MX	Sta ge IIA

H	E				1	noma						
TCGA -F4- 6807	FE M AL E	166	13 09	57	20. 68 51 5	Colon Adenocarci noma	Colon	Ali ve	T3	N2 b	M0	Sta ge IIIC
TCGA -AA- 3561	M AL E	Not Ava ilabl e	42 4	Not Available		Colon Adenocarci noma	Colon	Ali ve	T3	N0	M0	Sta ge IIA
TCGA -NH- A6GA	M AL E	162. 6	30 2	92	34. 79 74	Colon Adenocarci noma	Colon	De ad	T4 a	N2 a	MX	Sta ge IIIC
TCGA -D5- 6535	FE M AL E	157	46 0	65	26. 37 02 4	Colon Adenocarci noma	Colon	Ali ve	T3	N1	MX	Sta ge IIIB
TCGA -G4- 6295	FE M AL E	Not Ava ilabl e	25 4	59		Colon Adenocarci noma	Colon	Ali ve	T3	N0	M0	Sta ge II
TCGA -A6- 2682	M AL E	180	42 4	96.5	29. 78 39 5	Colon Adenocarci noma	Colon	De ad	T4 b	N1	M1	Sta ge IV
TCGA -AD- A5EK	M AL E	190	50 0	100	27. 70 08 3	Colon Adenocarci noma	Colon	Ali ve	T2	N0	MX	Sta ge I
TCGA -D5- 5541	M AL E	170	17 01	81	28. 02 76 8	Colon Adenocarci noma	Colon	Ali ve	T3	N1 a	M0	Sta ge IIIB
TCGA -AA- 3713	M AL E	Not Ava ilabl e	57 9	Not Available		Colon Adenocarci noma	Colon	Ali ve	T3	N0	M1	Sta ge IV
TCGA -G4- 6320	M AL E	193	80 4	139. 7	37. 50 43 6	Colon Adenocarci noma	Colon	Ali ve	T3	N1	MX	Sta ge III
TCGA -CA- 6715	M AL E	158	38 3	57	22. 83 28 8	Colon Adenocarci noma	Colon	Ali ve	T3	N1	M0	Sta ge IIIB

TCGA -AA- 3867	M AL E	Not Ava ilabl e	73 1	Not Available		Colon Adenocarci noma	Colon	Ali ve	T3	N2	M1	Sta ge IV
TCGA -A6- 2680	FE M AL E	151	10 68	52.6	23. 06 91 6	Colon Adenocarci noma	Colon	Ali ve	T3	N0	M0	Sta ge II
TCGA -AA- 3864	M AL E	Not Ava ilabl e	16 12	Not Available		Colon Adenocarci noma	Colon	Ali ve	T3	N0	M0	Sta ge II
TCGA -AA- 3972	M AL E	Not Ava ilabl e	15 51	Not Available		Colon Adenocarci noma	Colon	Ali ve	T3	N1	M1	Sta ge IV
TCGA - CM- 5348	M AL E	163	69 9	85.5	32. 18 03 6	Colon Adenocarci noma	Colon	Ali ve	T3	N1 a	M0	Sta ge IIIB
TCGA -AY- A8YK	M AL E	185	57 3	86.1	25. 15 70 5	Colon Adenocarci noma	Colon	Ali ve	T3	N2 a	M1	Sta ge IV A
TCGA -F4- 6805	FE M AL E	162	10 47	60	22. 86 23 7	Colon Adenocarci noma	Colon	Ali ve	T3	N0	M0	Sta ge IIA
TCGA -AA- 3489	M AL E	Not Ava ilabl e	21 4	Not Available		Colon Adenocarci noma	Colon	De ad	T3	N0	M0	Sta ge II
TCGA -A6- 2678	FE M AL E	171	12 86	96.1	32. 86 48 1	Colon Adenocarci noma	Colon	Ali ve	T3	N1	M0	Sta ge IIIB
TCGA - DM- A28 M	M AL E	172	28 95	90	30. 42 18 5	Colon Adenocarci noma	Colon	Ali ve	T3	N0	M0	Sta ge IIA
TCGA -AA- 3848	FE M AL	Not Ava ilabl	30 6	Not Available		Colon Adenocarci noma	Colon	De ad	T3	N2	M0	Sta ge IIIC

	E	e										
TCGA -AA- 3519	M AL E	Not Ava ilabl e	27 6	Not Available		Colon Adenocarci noma	Colon	Ali ve	T3	N1	M0	Sta ge III
TCGA -AA- A01X	FE M AL E	Not Ava ilabl e	79 1	Not Available		Colon Adenocarci noma	Colon	Ali ve	T2	N1	M0	Sta ge III
TCGA -AD- 6964	M AL E	183	33 1	91	27. 17 31	Colon Adenocarci noma	Colon	De ad	T4 a	N2 b		
TCGA -D5- 6928	M AL E	174	35 4	93	30. 71 74	Colon Mucinous Adenocarci noma	Colon	Ali ve	T3	N0	M0	Sta ge IIA
TCGA -AZ- 4323	M AL E	Not Ava ilabl e	43	Not Available		Colon Adenocarci noma	Colon	De ad	T4	N2	M1	Sta ge IV
TCGA -D5- 5539	M AL E	168	59 6	83	29. 40 76	Colon Mucinous Adenocarci noma	Colon	Ali ve	T3	N1	M0	Sta ge IIIA
TCGA - DM- A1D A	FE M AL E	163	22 8	62	23. 33 54 7	Colon Adenocarci noma	Colon	De ad	T3	N2	M0	Sta ge IIIC
TCGA -D5- 6923	M AL E	187	37 8	109	31. 17 04 7	Colon Adenocarci noma	Colon	Ali ve	T2	N0	M0	Sta ge I
TCGA -A6- 6781	M AL E	190. 5	59 8	87.5	24. 11 11 6	Colon Mucinous Adenocarci noma	Colon	Ali ve	T4 b	N1 b	MX	Sta ge IIIC
TCGA -AA- A02F	FE M AL E	Not Ava ilabl e	12 16	Not Available		Colon Adenocarci noma	Colon	Ali ve	T3	N1	M1	Sta ge IV
TCGA - DM-	M AL E	175		75	24. 48 98	Discrepanc y	Colon		T3	N0	M0	Sta ge IIA

A1D7												
TCGA -CK- 4950	FE M AL E	Not Ava ilabl e	25 99	Not Available		Colon Mucinous Adenocarci noma	Colon	Ali ve	T3	N1	M0	Sta ge IIIB
TCGA -AA- 3973	M AL E	Not Ava ilabl e	39 7	Not Available		Colon Adenocarci noma	Colon	Ali ve	T4	N1	M1	Sta ge IV
TCGA -5M- AATE	M AL E	177	12 00	75.4	24. 06 71 6	Colon Adenocarci noma	Colon	Ali ve	T3	N0	M0	Sta ge IIA
TCGA -A6- 2671	M AL E	182. 8	13 31	67.2	20. 11 02 2	Colon Adenocarci noma	Colon	De ad	T3	N2	M1	Sta ge IV
TCGA -AZ- 6599	M AL E	Not Ava ilabl e	20 6	Not Available		Colon Adenocarci noma	Colon	De ad	T2	N0	MX	Sta ge I
TCGA -4N- A93T	M AL E	167. 64	14 6	134	47. 68 14 5	Colon Adenocarci noma	Colon	Ali ve	T4 a	N1 b	M0	Sta ge IIIB
TCGA -AA- 3672	FE M AL E	Not Ava ilabl e	0	Not Available		Colon Adenocarci noma	Colon	Ali ve	T3	N1	M0	Sta ge III
TCGA - DM- A1D6	M AL E	173	57 0	80	26. 72 99 3	Colon Mucinous Adenocarci noma	Colon	De ad	T3	N0	M0	Sta ge IIA
TCGA -AA- 3977	M AL E	Not Ava ilabl e	76 1	Not Available		Colon Adenocarci noma	Colon	Ali ve	T2	N0		
TCGA -AA- 3877	FE M AL E	Not Ava ilabl e	94 3	Not Available		Colon Mucinous Adenocarci noma	Colon	Ali ve	T1	N0	M0	Sta ge I
TCGA -AA- 3530	M AL E	Not Ava ilabl	58 0	Not Available		Colon Adenocarci noma	Colon	Ali ve	T2	N0	M0	Sta ge I

		e										
TCGA -A6- 3807	FE M AL E	163	10 54	109. 5	41. 21 34 4	Colon Adenocarci noma	Colon	Ali ve	T3	N2	M0	Sta ge IIC
TCGA -AA- 3845	FE M AL E	Not Ava ilabl e	0	Not Available	Colon Adenocarci noma	Colon	De ad	T3	N0	M0	Sta ge IIA	
TCGA -AZ- 6607	M AL E	Not Ava ilabl e	97	Not Available	Colon Adenocarci noma	Colon	De ad	T4	N2	M1	Sta ge IV	
TCGA - DM- A1D8	FE M AL E	158	38 3	65	26. 03 74 9	Colon Adenocarci noma	Colon	De ad	T3	N1		
TCGA -CA- 6717	M AL E	168	38 8	58	20. 54 98 9	Colon Mucinous Adenocarci noma	Colon	Ali ve	T3	N0	M0	Sta ge IIA
TCGA -G4- 6299	M AL E	130	22 68	88	52. 07 10 1	Colon Adenocarci noma	Colon	Ali ve	T3	N2	M0	Sta ge IIC
TCGA -G4- 6626	M AL E	Not Ava ilabl e	1	59		Colon Adenocarci noma	Colon	De ad	T3	N0	M0	Sta ge IIA
TCGA -A6- 6140	M AL E	177. 8	73 4	78.9	24. 95 82 1	Colon Adenocarci noma	Colon	Ali ve	T3	N0	M0	Sta ge IIA
TCGA -AA- 3506	M AL E	Not Ava ilabl e	17 65	Not Available	Colon Adenocarci noma	Colon	Ali ve	T2	N0	M0	Sta ge I	
TCGA -AA- 3970	M AL E	Not Ava ilabl e	10 96	Not Available	Colon Adenocarci noma	Colon	Ali ve	T3	N0	M0	Sta ge IIA	
TCGA -A6- 5666	M AL E	193	99 5	95.4	25. 61 14	Colon Adenocarci noma	Colon	Ali ve	T4 b	N0	M0	Sta ge IIC

					3							
TCGA -AA- 3679	M AL E	Not Ava ilabl e	45 7	Not Available		Colon Adenocarci noma	Colon	Ali ve	T3	N2	M1	Sta ge IV
TCGA -AA- 3548	FE M AL E	Not Ava ilabl e	10 34	Not Available		Colon Adenocarci noma	Colon	Ali ve	T3	N2	M0	Sta ge IIIC
TCGA -AA- A017	FE M AL E	Not Ava ilabl e	45 7	Not Available		Colon Adenocarci noma	Colon	Ali ve	T3	N0	M0	Sta ge IIA
TCGA -A6- 6648	M AL E	182. 8	76 6	87	26. 03 55 6	Colon Adenocarci noma	Colon	Ali ve	T3	N0	M1 a	Sta ge IV A
TCGA -AA- 3949	FE M AL E	Not Ava ilabl e	79 1	Not Available		Colon Mucinous Adenocarci noma	Colon	Ali ve	T3	N1	M0	Sta ge IIIB
TCGA -F4- 6569	M AL E	180	10 87	60	18. 51 85 2	Colon Adenocarci noma	Colon	Ali ve	T2	N0	M0	Sta ge I
TCGA -AA- A00Z	M AL E	Not Ava ilabl e	66 9	Not Available		Colon Adenocarci noma	Colon	Ali ve	T3	N0	M0	Sta ge IIA
TCGA -NH- A50U	M AL E	172. 7	33 4	88.5	29. 67 28	Colon Mucinous Adenocarci noma	Colon	De ad	T4 a	N0	M1 a	Sta ge IV A
TCGA -AA- 3510	M AL E	Not Ava ilabl e	19 46	Not Available		Colon Adenocarci noma	Colon	Ali ve	T3	N0	M0	Sta ge II
TCGA -AA- 3552	M AL E	Not Ava ilabl e	39 6	Not Available		Colon Adenocarci noma	Colon	De ad	T3	N2	M0	Sta ge IIIC
TCGA -CK- 5916	FE M AL	Not Ava ilabl	64 3	Not Available		Colon Adenocarci noma	Colon	De ad	T1	N0	M0	Sta ge I

	E	e										
TCGA -CK- 6746	FE M AL E	Not Ava ilabl e	0	Not Available		Colon Adenocarci noma	Colon	Ali ve	T4 b	N0	MX	Sta ge IIB
TCGA -AA- 3543	M AL E	Not Ava ilabl e	30	Not Available		Colon Mucinous Adenocarci noma	Colon	Ali ve	T2	N0	M0	Sta ge I
TCGA - CM- 5864	M AL E	180	45 7	103	31. 79 01 2	Colon Adenocarci noma	Colon	Ali ve	T2	N0	M0	Sta ge I
TCGA - CM- 4747	M AL E	188	76 1	76.7	21. 70 1	Colon Adenocarci noma	Colon	Ali ve	T4 a	N1 b	M1 a	Sta ge IV A
TCGA -AA- 3655	M AL E	Not Ava ilabl e	18 56	Not Available		Colon Adenocarci noma	Colon	Ali ve	T3	N0	M0	Sta ge II
TCGA -G4- 6306	M AL E	170	13 59	110	38. 06 22 8	Colon Adenocarci noma	Colon	Ali ve	T2	N0	M0	
TCGA -AY- 4070	FE M AL E	160	49 6	100. 8	39. 37 5	Colon Adenocarci noma	Colon	De ad	T3	N2	M0	Sta ge IIIC
TCGA -AA- 3976	M AL E	Not Ava ilabl e	79 1	Not Available		Colon Adenocarci noma	Colon	Ali ve	T2	N1	M0	Sta ge IIIA
TCGA - CM- 6171	FE M AL E	162	42 7	71.2	27. 13 00 1	Colon Adenocarci noma	Colon	Ali ve	T2	N0	M0	Sta ge I
TCGA - CM- 4751	M AL E	183	82 2	115	34. 33 96 3	Colon Adenocarci noma	Colon	Ali ve	T3	N1 b	M0	Sta ge IIIB
TCGA -AA- 3856	M AL E	Not Ava ilabl	30	Not Available		Colon Adenocarci noma	Colon	Ali ve	T3	N0	M0	Sta ge IIA

		e										
TCGA -AZ- 4614	FE M AL E	Not Ava ilabl e	17 2	70		Colon Adenocarci noma	Colon	De ad	T4 a	N1	M1	Sta ge IV A
TCGA - CM- 6170	FE M AL E	145	45 7	85.8	40. 80 85 6	Colon Adenocarci noma	Colon	Ali ve	T2	N0	M0	Sta ge I
TCGA -D5- 6924	M AL E	165	43 5	85	31. 22 13	Colon Adenocarci noma	Colon	Ali ve	T3	N0	M0	Sta ge IIA
TCGA - CM- 5349	FE M AL E	156	91 5	54.4	22. 35 37 1	Colon Adenocarci noma	Colon	Ali ve	T3	N0	M0	Sta ge IIA
TCGA -AZ- 4682	M AL E	Not Ava ilabl e	68 0	98		Colon Adenocarci noma	Colon	De ad	T3	N0	M1	Sta ge IV A
TCGA -AA- 3560	FE M AL E	Not Ava ilabl e	60 8	Not Available		Colon Adenocarci noma	Colon	Ali ve	T3	N2	M0	Sta ge IIIC
TCGA -D5- 7000	FE M AL E	154	31 2	60	25. 29 93 8	Colon Mucinous Adenocarci noma	Colon	Ali ve	T2	N0	M0	Sta ge I
TCGA - CM- 6172	FE M AL E	151	33 5	77.6	34. 03 36	Colon Adenocarci noma	Colon	Ali ve	T3	N1 a	M0	Sta ge IIIB
TCGA -D5- 6532	M AL E	174	55 5	92	30. 38 71 1	Colon Adenocarci noma	Colon	Ali ve	T3	N0	M0	Sta ge IIA
TCGA -5M- AAT4	M AL E	Not Ava ilabl e	49	Not Available		Colon Adenocarci noma	Colon	De ad	T3	N0	M1 b	Sta ge IV
TCGA -CA- 5255	M AL E	172	37 6	56	18. 92 91 5	Colon Adenocarci noma	Colon	Ali ve	T3	N0	M0	Sta ge IIA

TCGA -A6- 2676	FE M AL E	154. 9	13 05	45.9	19. 12 97 7	Colon Adenocarci noma	Colon	De ad	T4	N0	M0	Sta ge IIB
TCGA -A6- 5656	M AL E	179	10 01	76.6	23. 90 68 7	Colon Adenocarci noma	Colon	Ali ve	T2	N0	M0	Sta ge I
TCGA -F4- 6809	FE M AL E	150	40 3	88	39. 11 11 1	Colon Adenocarci noma	Colon	De ad	T3	N1	M1	Sta ge IV A
TCGA -AA- 3715	M AL E	Not Ava ilabl e	57 9	Not Available		Colon Adenocarci noma	Colon	De ad	T3	N0	M0	Sta ge II
TCGA -F4- 6808	FE M AL E	166	10 24	70	25. 40 28 2	Colon Adenocarci noma	Colon	Ali ve	T1	N0	M0	Sta ge I
TCGA -AY- 6386	FE M AL E	153	54 2	86	36. 73 80 1	Colon Adenocarci noma	Colon	Ali ve	T3	N1 a	M0	Sta ge IIIB
TCGA -CK- 4952	FE M AL E	Not Ava ilabl e	47 5	Not Available		Colon Mucinous Adenocarci noma	Colon	Ali ve	T4	N2	M0	Sta ge IIIC
TCGA -AA- 3831	M AL E	Not Ava ilabl e	54 7	Not Available		Colon Adenocarci noma	Colon	Ali ve	T3	N0	M0	Sta ge IIA
TCGA -AA- A010	FE M AL E	Not Ava ilabl e	10 64	Not Available		Colon Adenocarci noma	Colon	Ali ve	T4	N0	M0	Sta ge IIB
TCGA -AD- 6901	M AL E	170	68 2	69	23. 87 54 3	Colon Adenocarci noma	Colon	De ad	T3	N0	MX	
TCGA -D5- 6929	FE M AL E	167	40 8	80	28. 68 51 4	Colon Adenocarci noma	Colon	Ali ve	T3	N1	M1	Sta ge IV

TCGA -AA- 3673	FE M AL E	Not Ava ilabl e	15 22	Not Available		Colon Adenocarci noma	Colon	Ali ve	T3	N0	M0	Sta ge II
TCGA -AA- A01K	FE M AL E	Not Ava ilabl e	94 3	Not Available		Colon Adenocarci noma	Colon	Ali ve	T3	N2	M0	Sta ge IIIC
TCGA -G4- 6307	FE M AL E	166	16 74	71	25. 76 57 1	Colon Adenocarci noma	Colon	Ali ve	T3	N1	M0	Sta ge IIIB
TCGA -A6- 2685	FE M AL E	171	11 33	77.3	26. 43 54 8	Colon Adenocarci noma	Colon	Ali ve	T3	N0	M0	Sta ge IIA
TCGA -AA- 3556	M AL E	Not Ava ilabl e	70 0	Not Available		Not Available	Colon	Ali ve	T2	N0	M0	Sta ge I
TCGA -AZ- 4313	FE M AL E	Not Ava ilabl e	23 10	57		Colon Adenocarci noma	Colon	Ali ve	T1	N0	M0	Sta ge I
TCGA -D5- 5538	FE M AL E	165	16 61	70	25. 71 16 6	Colon Adenocarci noma	Colon	De ad	T3	N1 b	M0	Sta ge IIIB
TCGA -5M- AAT6	FE M AL E	162	29 0	99.1	37. 76 10 1	Colon Adenocarci noma	Colon	De ad	T4 a	N2 b	M1 a	Sta ge IV
TCGA -G4- 6310	M AL E	173	19 35	102. 5	34. 24 77 2	Colon Adenocarci noma	Colon	Ali ve	T3	N1	M0	Sta ge IIIB
TCGA - AM- 5820	FE M AL E	164	14	98	36. 43 66 4	Colon Adenocarci noma	Colon	Ali ve	T4 a	N2	M1	Sta ge IV A
TCGA -QG- A5Z1	M AL E	Not Ava ilabl e	25 6	91.1		Colon Adenocarci noma	Colon	De ad	T3	N1 b	MX	Sta ge IIIB

TCGA -D5- 6541	M AL E	174	47 4	85	28. 07 50 4	Colon Adenocarci noma	Colon	Ali ve	T3	N0	M0	Sta ge IIA
TCGA -AA- A02J	FE M AL E	Not Ava ilabl e	15 3	Not Available		Colon Adenocarci noma	Colon	De ad	T3	N0	M1	Sta ge IV
TCGA - DM- A28A	M AL E	172	80 5	72	24. 33 74 8	Colon Adenocarci noma	Colon	De ad	T3	N2	M0	Sta ge IIIC
TCGA -AA- 3502	M AL E	Not Ava ilabl e	10 65	Not Available		Colon Adenocarci noma	Colon	Ali ve	T2	N0	M0	Sta ge I
TCGA -A6- 5664	M AL E	180. 3	67 2	70.3	21. 62 53 9	Colon Adenocarci noma	Colon	Ali ve	T4 a	N2 a	MX	Sta ge IIIC
TCGA -A6- 2677	FE M AL E	160	74 0	55.2	21. 56 25	Colon Adenocarci noma	Colon	De ad	T3	N2	M0	Sta ge IIIC
TCGA -AZ- 5403	M AL E	Not Ava ilabl e	19 10	Not Available		Colon Adenocarci noma	Colon	De ad	T3	N0	MX	Sta ge II
TCGA -A6- 6138	M AL E	185. 4	68 5	90.7	26. 38 68 7	Colon Adenocarci noma	Colon	Ali ve	T2	N0	M0	Sta ge I
TCGA -AA- 3710	FE M AL E	Not Ava ilabl e	82 1	Not Available		Colon Adenocarci noma	Colon	Ali ve	T3	N0	M0	Sta ge IIA
TCGA -AA- A01S	FE M AL E	Not Ava ilabl e	31	Not Available		Colon Adenocarci noma	Colon	Ali ve	T3	N1	M0	Sta ge III
TCGA -CA- 5256	FE M AL E	160	37 9	52	20. 31 25	Colon Adenocarci noma	Colon	Ali ve	T3	N0	M0	Sta ge IIA

TCGA -CA- 6719	M AL E	172	43 5	61	20. 61 92 5	Colon Adenocarci noma	Colon	Ali ve	T3	N0	M0	Sta ge IIA
TCGA -CK- 4951	FE M AL E	Not Ava ilabl e	14 92	Not Available		Colon Mucinous Adenocarci noma	Colon	Ali ve	T3	N0	M0	Sta ge IIA
TCGA - CM- 4743	M AL E	167	70 1	84.4	30. 26 28 3	Colon Adenocarci noma	Colon	Ali ve	T3	N0	M0	Sta ge IIA
TCGA -AA- 3930	M AL E	Not Ava ilabl e	61	Not Available		Colon Adenocarci noma	Colon	De ad	T3	N2	M1	Sta ge IV
TCGA -AD- 6895	M AL E	170	76 3	68	23. 52 94 1	Colon Adenocarci noma	Colon	Ali ve	T3	N1 a	M0	Sta ge IIIB
TCGA -D5- 6540	M AL E	186	49 1	86	24. 85 83 7	Colon Mucinous Adenocarci noma	Colon	Ali ve	T2	N0	M0	Sta ge I
TCGA -CA- 5797	M AL E	Not Ava ilabl e	38 3	Not Available		Colon Adenocarci noma	Colon	Ali ve	T3	N0	M0	Sta ge IIA
TCGA -AA- A00N	M AL E	Not Ava ilabl e	12 2	Not Available		Colon Mucinous Adenocarci noma	Colon	De ad	T4	N0	M0	Sta ge IIB
TCGA -AA- A02E	FE M AL E	Not Ava ilabl e	90	Not Available		Colon Adenocarci noma	Colon	De ad	T3	N1	M1	Sta ge IV
TCGA -D5- 6529	M AL E	176	61 4	106	34. 22 00 4	Colon Adenocarci noma	Colon	Ali ve	T3	N0	M0	Sta ge IIA
TCGA -AA- A00R	FE M AL E	Not Ava ilabl e	30	Not Available		Colon Adenocarci noma	Colon	Ali ve	T2	N0	M0	Sta ge I

TCGA -G4- 6588	FE M AL E	166	79 6	57	20. 68 51 5	Colon Adenocarci noma	Colon	Ali ve	T3	N0	M0	Sta ge IIA
TCGA -F4- 6460	FE M AL E	168	97 2	73	25. 86 45 1	Colon Adenocarci noma	Colon	De ad	T3	N1	M0	Sta ge IIIB
TCGA -G4- 6304	FE M AL E	Not Ava ilabl e	16 31	57		Colon Adenocarci noma	Colon	Ali ve	T4	N0	M0	Sta ge IIB
TCGA -AA- 3850	M AL E	Not Ava ilabl e	0	Not Available		Colon Adenocarci noma	Colon	De ad	T2	N0	M0	Sta ge I
TCGA -AA- 3558	M AL E	Not Ava ilabl e	63 8	Not Available		Colon Adenocarci noma	Colon	Ali ve	T2	N0	M0	Sta ge I
TCGA - CM- 5861	FE M AL E	164	45 7	122	45. 35 99	Colon Adenocarci noma	Colon	Ali ve	T3	N0	M0	Sta ge IIA
TCGA -G4- 6298	M AL E	Not Ava ilabl e	0	59.4		Colon Adenocarci noma	Colon	De ad	T4 a	N1	MX	Sta ge IIIB
TCGA -G4- 6315	M AL E	170	18 83	58	20. 06 92	Colon Adenocarci noma	Colon	Ali ve	T3	N1	M1	Sta ge IV
TCGA -AA- 3841	M AL E	Not Ava ilabl e	11 24	Not Available		Colon Adenocarci noma	Colon	Ali ve	T3	N0	M0	Sta ge IIA
TCGA -AA- A00U	M AL E	Not Ava ilabl e	51 8	Not Available		Colon Adenocarci noma	Colon	Ali ve	T3	N1	M0	Sta ge IIIB
TCGA -A6- 2679	FE M AL E	165. 1	13 66	65.9	24. 17 63 8	Colon Adenocarci noma	Colon	Ali ve	T3	N0		Sta ge IIB
TCGA	M	Not	66	Not		Colon	Colon	Ali	T3	N1	MX	Sta

-CK-5914	AL E	Ava ilabl e	9	Available		Adenocarci noma		ve				ge IIB
TCGA -DM-A28C	M AL E	180	24 75	70	21. 60 49 4	Colon Adenocarci noma	Colon	De ad	T3	N0	M0	Sta ge IIA
TCGA -QG-A5Z2	M AL E	183	95 2	97.5	29. 11 40 4	Colon Adenocarci noma	Colon	Ali ve	T2	N0	M0	Sta ge I
TCGA -CM-6168	FE M AL E	149	39 5	52.5	23. 64 75 8	Colon Adenocarci noma	Colon	Ali ve	T3	N0	M0	Sta ge IIA
TCGA -A6-2686	FE M AL E	155	11 26	61.4	25. 55 67 1	Colon Adenocarci noma	Colon	De ad	T3	N0	M0	Sta ge IIA
TCGA -AA-3544	M AL E	Not Ava ilabl e	42 6	Not Available		Colon Adenocarci noma	Colon	Ali ve	T2	N0	M0	Sta ge I
TCGA -AA-A00D	M AL E	Not Ava ilabl e	57 8	Not Available		Colon Adenocarci noma	Colon	Ali ve	T2	N0	M0	Sta ge I
TCGA -A6-5657	M AL E	172	96 2	99.6	33. 66 68 5	Colon Adenocarci noma	Colon	Ali ve	T3	N1	M0	Sta ge IIB
TCGA -CM-5863	FE M AL E	150	45 7	103. 4	45. 95 55 6	Colon Mucinous Adenocarci noma	Colon	Ali ve	T3	N1 b	M0	Sta ge IIB
TCGA -AA-3488	M AL E	Not Ava ilabl e	15 3	Not Available		Colon Adenocarci noma	Colon	De ad	T3	N2	M1	Sta ge IV
TCGA -AD-6899	M AL E	175	17 6	62	20. 24 49	Colon Mucinous Adenocarci noma	Colon	De ad	T4 a	N2 b	MX	Sta ge IIC
TCGA	M	170	18	90	31.	Colon	Colon	De	T3	N0	M0	Sta

- DM- A28G	AL E		49		14 18 7	Adenocarci noma		ad				ge IIA
TCGA -AA- 3562	M AL E	Not Ava ilabl e	60 8	Not Available		Colon Adenocarci noma	Colon	Ali ve	T3	N2	M0	Sta ge IIIC
TCGA - CM- 4748	M AL E	176	79 2	89.8	28. 99 01 9	Colon Mucinous Adenocarci noma	Colon	Ali ve	T4 a	N1 a	M0	Sta ge IIIB
TCGA -AA- 3968	FE M AL E	Not Ava ilabl e	66 9	Not Available		Colon Adenocarci noma	Colon	Ali ve	T2	N0	M0	Sta ge I
TCGA -G4- 6297	FE M AL E	Not Ava ilabl e	25 06	64		Colon Adenocarci noma	Colon	Ali ve	T3	N2	M1	Sta ge IV
TCGA - CM- 5862	M AL E	162. 5	15 3	77.6	29. 38 69 8	Colon Adenocarci noma	Colon	De ad	T3	N1 a	M1 a	Sta ge IV A
TCGA -CA- 6716	M AL E	167	37 1	58	20. 79 67 3	Colon Adenocarci noma	Colon	Ali ve	T3	N0	M0	Sta ge IIA
TCGA -AA- A01C	M AL E	Not Ava ilabl e	45 7	Not Available		Colon Adenocarci noma	Colon	Ali ve	T2	N1	M0	Sta ge IIIA
TCGA -AA- 3553	FE M AL E	Not Ava ilabl e	73 0	Not Available		Colon Adenocarci noma	Colon	Ali ve	T2	N0	M0	Sta ge I
TCGA -A6- 2672	FE M AL E	157	14 19	51.5	20. 89 33 4	Colon Adenocarci noma	Colon	Ali ve	T3	N1	M0	Sta ge IIIB
TCGA -AA- A01Z	M AL E	Not Ava ilabl e	11 26	Not Available		Colon Adenocarci noma	Colon	Ali ve	T3	N0	M0	Sta ge II
TCGA	FE	150	88	59	26.	Colon	Colon	Ali	T3	N0	M0	Sta

- CM- 6164	M AL E		3		22 22 2	Adenocarci noma		ve				ge IIA
TCGA -CK- 5912	M AL E	Not Ava ilabl e	14 93	Not Available		Colon Adenocarci noma	Colon	De ad	T2	N0	MX	Sta ge I
TCGA -A6- 2675	M AL E	160	13 21	71.3	27. 85 15 6	Colon Adenocarci noma	Colon	Ali ve	T3	N0	MX	Sta ge IIA
TCGA - CM- 6678	FE M AL E	157	33 5	59	23. 93 60 6	Colon Adenocarci noma	Colon	Ali ve	T4 a	N1 c	M1 a	Sta ge IV A
TCGA - DM- A0X9	FE M AL E	170	36 41	86	29. 75 77 9	Colon Adenocarci noma	Colon	Ali ve	T3	N0	M0	Sta ge IIA
TCGA -F4- 6703	M AL E	172	14 56	84	28. 39 37 3	Colon Adenocarci noma	Colon	Ali ve	T3	N0	M0	Sta ge IIA
TCGA -AA- 3520	FE M AL E	Not Ava ilabl e	73 1	Not Available		Colon Adenocarci noma	Colon	Ali ve	T3	N0	M0	Sta ge II
TCGA -AD- 6888	M AL E	183	47 2	96	28. 66 61 3	Colon Adenocarci noma	Colon	De ad	T3	N1 b	M0	Sta ge IIIB
TCGA -AA- 3846	FE M AL E	Not Ava ilabl e	51 8	Not Available		Colon Adenocarci noma	Colon	Ali ve	T3	N0	M0	Sta ge IIA
TCGA - CM- 6680	FE M AL E	150	36 6	72.4	32. 17 77 8	Colon Adenocarci noma	Colon	Ali ve	T3	N2 a	M0	Sta ge IIIB
TCGA - DM- A1HB	M AL E	168	41 26	70	24. 80 15 9	Discrepanc y	Colon	Ali ve	T3	N1	M0	Sta ge IIIB
TCGA	FE	Not	10	61.3		Colon	Colon	Ali	T3	N1	M1	Sta

-AY-5543	MAL E	Available	04			Adenocarcinoma		ve		a		ge IV A
TCGA-G4-6323	MAL E	171.5	419	88.4	30.0555	Colon Adenocarcinoma	Colon	Alive	Tis	N0	MX	Stage IA
TCGA-AA-A029	MAL E	Not Available	1581	Not Available		Colon Adenocarcinoma	Colon	Alive	T3	N0	M0	Stage II
TCGA-AA-3697	MAL E	Not Available	2587	Not Available		Colon Adenocarcinoma	Colon	Alive	T3	N0	M0	Stage II
TCGA-CM-5860	MAL E	182	974	100.7	30.4092	Colon Adenocarcinoma	Colon	Alive	T3	N0	M0	Stage IIA
TCGA-AD-5900	MAL E	Not Available	370	Not Available		Colon Mucinous Adenocarcinoma	Colon	Alive	T2	N0	MX	Stage I
TCGA-AA-A022	FEMALE	Not Available	0	Not Available		Colon Adenocarcinoma	Colon	Alive	T4	N0	M0	Stage II
TCGA-AA-3875	FEMALE	Not Available	549	Not Available		Colon Adenocarcinoma	Colon	Alive	T1	N0	M0	Stage I
TCGA-AA-3869	MAL E	Not Available	822	Not Available		Colon Adenocarcinoma	Colon	Dead	T4	N2	M1	Stage IV
TCGA-AA-3812	FEMALE	Not Available	1066	Not Available		Colon Adenocarcinoma	Colon	Alive	T3	N0	M0	Stage IIA
TCGA-G4-6321	FEMALE	178.2	672	100	31.49087	Colon Adenocarcinoma	Colon	Alive	T2	N1	MX	Stage III
TCGA-	MAL	171	2821	59	20.17	Colon Adenocarci	Colon	De ad	T3	N0	M0	Sta ge

DM-A1D4	E				715	noma						IIA
TCGA-T9-A92H	MAL E	180	362	63.9	19.7222	Colon Adenocarcinoma	Colon	Alive	T3	N0	M0	Stage IIA
TCGA-G4-6302	FEMALE	152.5	0	57	24.50954	Colon Mucinous Adenocarcinoma	Colon	Alive	T3	N0	M0	Stage IIA
TCGA-AA-3542	MAL E	Not Available	395	Not Available		Colon Adenocarcinoma	Colon	Alive	T3	N2	M0	Stage IIIC
TCGA-AY-6196	MAL E	Not Available	6	Not Available		Colon Mucinous Adenocarcinoma	Colon	Alive	T3	N2b		Stage IIIC
TCGA-A6-6654	FEMALE	173	726	97.4	32.54369	Colon Adenocarcinoma	Colon	Alive	T3	N1	M0	Stage IIIB
TCGA-A6-6653	MAL E	182.8	742	98.3	29.41719	Colon Adenocarcinoma	Colon	Alive	T2	N0	M0	Stage I
TCGA-D5-6922	MAL E	175	308	83	27.10204	Colon Adenocarcinoma	Colon	Alive	T3	N1	M0	Stage IIIA
TCGA-AA-3861	MAL E	Not Available	914	Not Available		Colon Adenocarcinoma	Colon	Alive	T3	N0	M0	Stage IIA
TCGA-CK-4948	FEMALE	Not Available	4502	Not Available		Colon Adenocarcinoma	Colon	Alive	T3	N1	M0	Stage III
TCGA-AA-3986	MAL E	Not Available	580	Not Available		Colon Adenocarcinoma	Colon	Alive	T2	N0	M0	Stage I
TCGA-D5-	FEMALE	152	521	57	24.67	Colon Adenocarci	Colon	Alive	T3	N2	M0	Stage

6538	AL E				10 5	noma						IIIB
TCGA -AA- 3971	M AL E	Not Ava ilabl e	48 9	Not Available		Colon Adenocarci noma	Colon	Ali ve	T3	N1	M0	Sta ge III
TCGA -G4- 6314	FE M AL E	158. 5	10 93	84.1	33. 47 63	Colon Adenocarci noma	Colon	Ali ve	T3	N2	M1	Sta ge IV
TCGA -D5- 6533	FE M AL E	156	77 5	51	20. 95 66 1	Colon Adenocarci noma	Colon	Ali ve	T4 b	N0	M0	
TCGA -D5- 6926	M AL E	175	27 5	82	26. 77 55 1	Colon Adenocarci noma	Colon	Ali ve	T4 a	N1	M0	Sta ge IIIB
TCGA -AA- 3534	FE M AL E	Not Ava ilabl e	88 2	Not Available		Colon Adenocarci noma	Colon	Ali ve	T3	N0	M0	Sta ge IIA
TCGA -A6- 4107	FE M AL E	154	98 7	91.8	38. 70 80 5	Colon Adenocarci noma	Colon	Ali ve	T3	N1 b	M0	Sta ge IIIB
TCGA - DM- A1D0	FE M AL E	170	39 74	65	22. 49 13 5	Colon Adenocarci noma	Colon	Ali ve	T3	N0	M0	Sta ge IIA
TCGA -AA- 3509	FE M AL E	Not Ava ilabl e	19 15	Not Available		Colon Adenocarci noma	Colon	Ali ve	T3	N0	M0	Sta ge II
TCGA -AA- 3684	FE M AL E	Not Ava ilabl e	0	Not Available		Colon Mucinous Adenocarci noma	Colon	Ali ve	T4	N2	M1	Sta ge IV
TCGA -AA- 3663	M AL E	Not Ava ilabl e	21 2	Not Available		Colon Adenocarci noma	Colon	Ali ve	T3	N0	M0	Sta ge II
TCGA -A6- 3	M AL	180. 3	10 14	84.5	25. 99	Colon Adenocarci	Colon	Ali ve	T3	N0	M0	Sta ge

3808	E				35 3	noma						IIA
TCGA -AA- 3950	FE M AL E	Not Ava ilabl e	73 0	Not Available		Colon Mucinous Adenocarci noma	Colon	Ali ve	T3	N0	M0	Sta ge IIA
TCGA -AA- 3494	M AL E	Not Ava ilabl e	31	Not Available		Colon Adenocarci noma	Colon	Ali ve	T3	N0	M1	Sta ge IV
TCGA -AA- 3854	FE M AL E	Not Ava ilabl e	10 96	Not Available		Colon Mucinous Adenocarci noma	Colon	Ali ve	T2	N0	M0	Sta ge I
TCGA -AD- 6890	M AL E	Not Ava ilabl e	74 6	Not Available		Colon Adenocarci noma	Colon	Ali ve	T1	N0	MX	
TCGA -AA- 3966	FE M AL E	Not Ava ilabl e	61	Not Available		Colon Mucinous Adenocarci noma	Colon	Ali ve	T3	N0	M0	Sta ge IIA
TCGA -AA- A00E	M AL E	Not Ava ilabl e	91 3	Not Available		Colon Adenocarci noma	Colon	Ali ve	T3	N0	M0	Sta ge IIA
TCGA -AA- 3982	M AL E	Not Ava ilabl e	82 2	Not Available		Colon Adenocarci noma	Colon	Ali ve	T3	N1	M0	Sta ge IIIB
TCGA -A6- 2681	FE M AL E	170. 1	13 87	79.6	27. 51 08 8	Colon Adenocarci noma	Colon	Ali ve	T3	N0	M0	Sta ge IIA
TCGA -A6- 6649	M AL E	190	73 5	106	29. 36 28 8	Colon Adenocarci noma	Colon	Ali ve	T3	N1 b	M0	Sta ge IIIB
TCGA -A6- 2674	M AL E	175. 2	13 31	85.6	27. 88 72 4	Colon Mucinous Adenocarci noma	Colon	Ali ve	T3	N2	M1	Sta ge IV
TCGA -F4-	M AL	183	47	163	48. 67	Colon Mucinous	Colon	Ali ve	T3	N2 b	MX	Sta ge

6704	E				27	Adenocarcinoma						IIC
TCGA-AA-A00F	MAL E	Not Available	1035	Not Available		Colon Adenocarcinoma	Colon	Alive	T3	N2	M0	Stage IIC
TCGA-AD-A5EJ	FEMAL E	163	0	71	26.7287	Colon Adenocarcinoma	Colon	Alive	T3	N0	MX	Stage IIA
TCGA-F4-6570	FEMAL E	159	188	59	23.33768	Colon Adenocarcinoma	Colon	Dead	T3	N0	M0	Stage IIA
TCGA-AA-3518	FEMAL E	Not Available	31	Not Available		Colon Adenocarcinoma	Colon	Alive	T3	N0	M0	Stage IIA
TCGA-A6-A567	MAL E	188	1881	84	23.76641	Colon Adenocarcinoma	Colon	Dead	T3	N1	M1	Stage IV
TCGA-A6-A566	FEMAL E	160	758	66.1	25.82031	Colon Mucinous Adenocarcinoma	Colon	Dead	T4	N1	M0	Stage IIIB
TCGA-AA-3529	FEMAL E	Not Available	0	Not Available		Colon Adenocarcinoma	Colon	Dead	T3	N2	M0	Stage IIC
TCGA-AA-A01G	MAL E	Not Available	365	Not Available		Colon Mucinous Adenocarcinoma	Colon	Alive	T3	N0	M0	Stage IIA
TCGA-CA-6718	MAL E	168	306	63	22.32143	Colon Adenocarcinoma	Colon	Dead	T3	N0	M0	Stage IIA
TCGA-AA-3521	MAL E	Not Available		Not Available		Colon Adenocarcinoma	Colon		T3	N0	M0	Stage II
TCGA-CM-	MAL E	165	337	100	36.7309	Colon Adenocarcinoma	Colon	Alive	T2	N0	M0	Stage I

6676					5							
TCGA - CM- 6165	M AL E	189	48 8	100. 7	28. 19 07	Colon Adenocarci noma	Colon	Ali ve	T3	N0	M0	Sta ge IIA
TCGA - DM- A282	FE M AL E	153	42 33	44	18. 79 61 9	Colon Adenocarci noma	Colon	Ali ve	T3	N0	M0	Sta ge IIA
TCGA -AA- 3681	FE M AL E	Not Ava ilabl e	18 2	Not Available		Colon Adenocarci noma	Colon	Ali ve	T3	N1	M0	Sta ge III
TCGA -SS- A7H O	FE M AL E	167	18 29	97.5	34. 96 00 2	Colon Adenocarci noma	Colon	Ali ve	T4 a	N0	M0	Sta ge IIB
TCGA -G4- 6627	M AL E	176	21 75	80	25. 82 64 5	Colon Adenocarci noma	Colon	Ali ve	T3	N0	M0	Sta ge IIA
TCGA -AA- 3549	M AL E	Not Ava ilabl e	63 9	Not Available		Colon Adenocarci noma	Colon	Ali ve	T2	N0	M0	Sta ge I
TCGA -AA- 3941	FE M AL E	Not Ava ilabl e	73 0	Not Available		Colon Adenocarci noma	Colon	Ali ve	T4	N1 b	M1 a	Sta ge IV A
TCGA -AY- 6197	M AL E	Not Ava ilabl e	65 2	158		Colon Adenocarci noma	Colon	Ali ve	T3	N0		Sta ge IIA
TCGA -A6- 2670	M AL E	175. 3	77 5	90.9	29. 58 01 3	Colon Adenocarci noma	Colon	Ali ve	T3	N0	M0	Sta ge IIA
TCGA -AA- A01Q	FE M AL E	Not Ava ilabl e	31	Not Available		Colon Adenocarci noma	Colon	Ali ve	T3	N0	M0	Sta ge II
TCGA -AA- 3678	FE M AL	Not Ava ilabl	14 30	Not Available		Colon Adenocarci noma	Colon	Ali ve	T2	N1	M0	Sta ge III

	E	e										
TCGA -D5- 5537	M AL E	168	13 81	75	26. 57 31 3	Colon Adenocarci noma	Colon	De ad	T3	N2	MX	
TCGA -NH- A50T	FE M AL E	160. 02	55 3	73.5	28. 70 37 6	Colon Adenocarci noma	Colon	Ali ve	T3	N0	MX	Sta ge IIA
TCGA -G4- 6322	M AL E	182	79 2	90.9	27. 44 23 4	Colon Mucinous Adenocarci noma	Colon	Ali ve	T3	N1	MX	Sta ge IIIB
TCGA -AA- A03J	FE M AL E	Not Ava ilabl e	12 46	Not Available		Colon Adenocarci noma	Colon	Ali ve	T2	N0	M0	Sta ge I
TCGA -AA- 3526	M AL E	Not Ava ilabl e	58 0	Not Available		Colon Adenocarci noma	Colon	Ali ve	T2	N0	M0	Sta ge I
TCGA -A6- 2683	FE M AL E	166. 3	50 4	57.5	20. 79 13 8	Colon Adenocarci noma	Colon	De ad	T4	N0	M1	Sta ge IV
TCGA -A6- 4105	M AL E	180. 3	44 2	83.3	25. 62 43 9	Colon Adenocarci noma	Colon	De ad	T3	N0	M0	Sta ge IIA
TCGA -A6- 6141	M AL E	177. 8	25 5	96.8	30. 62 04 7	Colon Adenocarci noma	Colon	Ali ve	T3	N0	M0	Sta ge IIA
TCGA - CM- 4746	M AL E	175	11 26	98	32	Colon Adenocarci noma	Colon	Ali ve	T2	N0	M0	Sta ge I
TCGA -AA- 3555	FE M AL E	Not Ava ilabl e	91 1	Not Available		Colon Mucinous Adenocarci noma	Colon	Ali ve	T3	N0	M0	Sta ge IIA
TCGA -AD- 6889	M AL E	Not Ava ilabl	25 32	Not Available		Colon Adenocarci noma	Colon	De ad	T3	N0	M0	Sta ge IIA

		e										
TCGA -AZ- 6600	M AL E	Not Ava ilabl e	36 8	Not Available		Colon Adenocarci noma	Colon	De ad	T4	N1	M1	Sta ge IV
TCGA -AA- 3955	M AL E	Not Ava ilabl e	63 8	Not Available		Colon Adenocarci noma	Colon	Ali ve	T2	N2 a	M0	Sta ge IIIB
TCGA -A6- 6650	FE M AL E	162. 6	62 7	94.7	35. 81 86 2	Colon Adenocarci noma	Colon	Ali ve	T3	N0	M0	Sta ge IIA
TCGA -AA- 3712	M AL E	Not Ava ilabl e	0	Not Available		Colon Adenocarci noma	Colon	Ali ve	T3	N2	M0	Sta ge III
TCGA -A6- A5ZU	M AL E	170	29 3	99.1	34. 29 06 6	Colon Adenocarci noma	Colon	Ali ve	T3	N1	M0	Sta ge IIIB
TCGA -A6- 5661	FE M AL E	170	10 20	69.1	23. 91 00 3	Colon Adenocarci noma	Colon	Ali ve	T3	N0	M0	Sta ge IIA
TCGA -AA- 3680	FE M AL E	Not Ava ilabl e	33 5	Not Available		Colon Adenocarci noma	Colon	De ad	T4	N2	M1	Sta ge IV
TCGA -F4- 6854	FE M AL E	170	16	66	22. 83 73 7	Colon Adenocarci noma	Colon	Ali ve	T3	N0	M0	Sta ge IIA
TCGA -AY- A69D	FE M AL E	165	54 3	103	37. 83 28 7	Colon Adenocarci noma	Colon	Ali ve	T3	N0	M0	Sta ge IIA
TCGA -A6- 2684	FE M AL E	163	11 27	70.1	26. 38 41 3	Colon Adenocarci noma	Colon	Ali ve	T2	N0	M0	Sta ge I
TCGA -AA- 3967	M AL E	Not Ava ilabl	94 3	Not Available		Colon Adenocarci noma	Colon	Ali ve	T3	N1	M0	Sta ge IIIB

		e										
TCGA -AY- 4071	FE M AL E	Not Ava ilabl e	29	113. 7		Not Available	Not Availabl e	De ad	T1	N0		Sta ge I
TCGA -AA- 3811	FE M AL E	Not Ava ilabl e	30 6	Not Available		Colon Adenocarci noma	Colon	De ad	T3	N2	M0	Sta ge III
TCGA - CM- 5868	FE M AL E	171	51 8	99.8	34. 13 01 6	Colon Adenocarci noma	Colon	Ali ve	T4 a	N1 a	M1 a	Sta ge IV A
TCGA -AA- 3692	FE M AL E	Not Ava ilabl e	10 95	Not Available		Colon Mucinous Adenocarci noma	Colon	De ad	T3	N2	M1	Sta ge IV
TCGA -D5- 6531	M AL E	167	54 0	60	21. 51 38 6	Colon Adenocarci noma	Colon	Ali ve	T3	N0	M0	Sta ge IIA
TCGA - CM- 6169	M AL E	176	39 6	109. 3	35. 28 53 8	Colon Adenocarci noma	Colon	Ali ve	T3	N0	M0	Sta ge IIA
TCGA -G4- 6293	FE M AL E	150	40 51	64.5	28. 66 66 7	Colon Adenocarci noma	Colon	Ali ve	T3	N1	M0	Sta ge III
TCGA - CM- 6163	M AL E	179	42 7	75.8	23. 65 71 9	Colon Adenocarci noma	Colon	Ali ve	T1	N0	M0	Sta ge I
TCGA -CK- 6751	FE M AL E	Not Ava ilabl e	51 8	Not Available		Colon Mucinous Adenocarci noma	Colon	Ali ve	T2	N0	MX	Sta ge I
TCGA - CM- 6677	FE M AL E	167	33 7	99.5	35. 67 71 5	Colon Adenocarci noma	Colon	Ali ve	T3	N0	M0	Sta ge IIA
TCGA -AZ- 4616	FE M AL	Not Ava ilabl	15 6	Not Available		Colon Adenocarci noma	Colon	De ad	T3	N2	M1	Sta ge IV

	E	e										
TCGA -AA- 3496	FE M AL E	Not Ava ilabl e	31	Not Available		Colon Adenocarci noma	Colon	Ali ve	T3	N0	M0	Sta ge II
TCGA -AA- 3492	FE M AL E	Not Ava ilabl e	1	Not Available		Colon Adenocarci noma	Colon	De ad	T3	N0	M0	Sta ge II
TCGA -A6- 6651	FE M AL E	162. 6	66 2	88.5	33. 47 35 8	Colon Adenocarci noma	Colon	Ali ve	T3	N1 b	MX	Sta ge IIIB
TCGA -AD- 6548	FE M AL E	157. 5	65 0	78.6	31. 68 55 6	Colon Adenocarci noma	Colon	Ali ve	T2	N0	M0	Sta ge I
TCGA - CM- 6679	M AL E	178	30 6	106. 5	33. 61 31 8	Colon Adenocarci noma	Colon	Ali ve	T3	N0	M0	Sta ge IIA
TCGA -AA- A02Y	M AL E	Not Ava ilabl e	12 16	Not Available		Colon Adenocarci noma	Colon	Ali ve	T2	N0	M0	Sta ge I
TCGA -D5- 6920	FE M AL E	160	37 7	73	28. 51 56 3	Colon Adenocarci noma	Colon	Ali ve	T3	N0	M0	Sta ge IIA
TCGA -AZ- 4615	M AL E	170	10 02	84	29. 06 57 4	Colon Adenocarci noma	Colon	Ali ve	T3	N1	M0	Sta ge IIIB
TCGA - DM- A1H A	M AL E	163	26 00	67	25. 21 73 6	Colon Adenocarci noma	Colon	Ali ve	T3	N2	M0	Sta ge IIIC
TCGA -AA- 3939	M AL E	Not Ava ilabl e	39 5	Not Available		Colon Adenocarci noma	Colon	Ali ve	T3	N0	M0	Sta ge IIA
TCGA -AA- -	M AL	Not Ava	11 26	Not Available		Colon Adenocarci	Colon	Ali ve	T2	N1	M0	Sta ge

3842	E	ilable				noma						IIIA
TCGA-A6-6782	MAL E	175	617	63.2	20.63673	Colon Adenocarcinoma	Colon	Alive	T4a	N0	MX	Stage IIB
TCGA-AA-A02R	FEMAL E	Not Available	670	Not Available		Colon Adenocarcinoma	Colon	Dead	T3	N0	M0	Stage IIA
TCGA-DM-A0XD	MAL E	160	743	62	24.21875	Colon Adenocarcinoma	Colon	Dead	T3	N0	M0	Stage IIA
TCGA-A6-5667	FEMAL E	175	887	76	24.81633	Colon Adenocarcinoma	Colon	Alive	T3	N1a	MX	Stage IIIB
TCGA-AA-3524	MAL E	Not Available	1096	Not Available		Colon Adenocarcinoma	Colon	Alive	T3	N0	M0	Stage II
TCGA-QG-A5YX	FEMAL E	163	1003	68.49	25.77816	Colon Adenocarcinoma	Colon	Alive	T3	N0	MX	Stage IIA
TCGA-AY-A71X	FEMAL E	164	588	130	48.33432	Colon Adenocarcinoma	Colon	Alive	T2	N0	M0	Stage I
TCGA-AM-5821	FEMAL E	148	28	68	31.04456	Colon Adenocarcinoma	Colon	Alive	T3	N0	M0	Stage IIA
TCGA-3L-AA1B	FEMAL E	173	475	63.3	21.15006	Colon Adenocarcinoma	Colon	Alive	T2	N0	M0	Stage I
TCGA-AY-A54L	FEMAL E	172	525	68	22.9854	Colon Adenocarcinoma	Colon	Alive	T2	N0	M0	Stage I
TCGA-AZ-	MAL	Not Available	1776	84		Colon Adenocarci	Colon	Alive	T3	N0	M0	Stage

4315	E	ilable				noma						IIA
TCGA-AA-3525	MAL E	Not Available	1	Not Available		Colon Adenocarcinoma	Colon	Alive	T3	N1	M0	Stage IIIB
TCGA-NH-A5IV	FEMAL E	158.5	0	49.5	19.70365	Colon Adenocarcinoma	Colon	Alive	T3	N0	MX	Stage IIA
TCGA-A6-3810	MAL E	175	1111	122.7	40.06531	Colon Adenocarcinoma	Colon	Alive	T3	N0	M0	Stage IIA
TCGA-AA-3837	MAL E	Not Available	1186	Not Available		Colon Mucinous Adenocarcinoma	Colon	Alive	T3	N0	M0	Stage IIA
TCGA-AA-3815	FEMAL E	Not Available	1005	Not Available		Colon Adenocarcinoma	Colon	Alive	T3	N0	M0	Stage IIA
TCGA-AA-3975	MAL E	Not Available	1036	Not Available		Colon Adenocarcinoma	Colon	Alive	T2	N0	M0	Stage I
TCGA-AA-3554	FEMAL E	Not Available	546	Not Available		Colon Adenocarcinoma	Colon	Alive	T3	N0	M0	Stage IIA
TCGA-AA-3660	FEMAL E	Not Available	2375	Not Available		Colon Adenocarcinoma	Colon	Alive	T3	N0	M0	Stage II
TCGA-AA-3852	MAL E	Not Available	0	Not Available		Colon Mucinous Adenocarcinoma	Colon	Dead	T3	N0	M0	Stage IIA
TCGA-AA-3664	FEMAL E	Not Available	1643	Not Available		Colon Adenocarcinoma	Colon	Alive	T3	N0	M0	Stage II
TCGA-AA-	MAL	Not Available	1127	Not Available		Colon Adenocarci	Colon	Alive	T3	N0	M0	Stage

3522	E	ilable				noma						IIA
TCGA - CM- 6162	FE M AL E	171	36 5	109	37. 27 64 3	Colon Mucinous Adenocarci noma	Colon	Ali ve	T3	N1 a	M0	Sta ge IIIB
TCGA - CM- 6167	FE M AL E	174	45 6	89	29. 39 62 2	Colon Adenocarci noma	Colon	Ali ve	T3	N2 b	M0	Sta ge IIIC
TCGA -G4- 6317	FE M AL E	162	10 95	95.3	36. 31 30 6	Colon Adenocarci noma	Colon	Ali ve	T3	N2	MX	Sta ge IIIC
TCGA -QG- A5YV	FE M AL E	173	13 01	109. 226	36. 49 50 4	Colon Adenocarci noma	Colon	Ali ve	T4 b	N1 a	MX	Sta ge IIIC
TCGA -A6- 5665	FE M AL E	157	67 1	90.8	36. 83 71 9	Colon Adenocarci noma	Colon	Ali ve	T3	N0	M0	Sta ge IIA
TCGA -AA- 3844	FE M AL E	Not Ava ilable	45 4	Not Available		Colon Adenocarci noma	Colon	Ali ve	T3	N2	M0	Sta ge IIIC
TCGA - CM- 6161	FE M AL E	174	45 7	65.6	21. 66 73 3	Colon Adenocarci noma	Colon	Ali ve	T2	N0	M0	Sta ge I
TCGA - CM- 5344	FE M AL E	156	67 0	64.9	26. 66 83 1	Colon Adenocarci noma	Colon	Ali ve	T3	N1 b	M0	Sta ge IIIB
TCGA -F4- 6856	M AL E	160	10 74	61	23. 82 81 3	Colon Mucinous Adenocarci noma	Colon	Ali ve	T2	N0	M0	Sta ge I
TCGA -AZ- 6605	M AL E	Not Ava ilable	15 9	Not Available		Colon Adenocarci noma	Colon	De ad	T4	N1	M0	Sta ge IIIB
TCGA -AA-	M AL	Not Ava	11 27	Not Available		Colon Adenocarci	Colon	Ali ve	T3	N0	M0	Sta ge

3685	E	ilable				noma						II
TCGA-G4-6294	MAL E	Not Available	858	47.5		Colon Adenocarcinoma	Colon	Dead	T3	N1	M1	Stage IV
TCGA-F4-6855	FEMAL E	167	1442	80	28.68514	Colon Adenocarcinoma	Colon	Alive	T3	N0	M0	Stage IIA
TCGA-A6-6137	MAL E	1803	824	93	28.60826	Colon Adenocarcinoma	Colon	Alive	T3	N1c	M0	Stage IIIB
TCGA-AA-3984	FEMAL E	Not Available	0	Not Available		Colon Adenocarcinoma	Colon	Alive	T3	N0	M0	Stage IIA
TCGA-AA-3818	FEMAL E	Not Available	30	Not Available		Colon Adenocarcinoma	Colon	Dead	T3	N0	M0	Stage IIA
TCGA-AA-3527	FEMAL E	Not Available	0	Not Available		Colon Adenocarcinoma	Colon	Alive	T3	N0	M0	Stage IIA
TCGA-AA-3989	MAL E	Not Available	242	Not Available		Colon Adenocarcinoma	Colon	Dead	T3	N2	M1	Stage IV
TCGA-AZ-6601	MAL E	162	3042	59	22.48133	Colon Adenocarcinoma	Colon	Dead	T3	N0	M0	Stage II
TCGA-AZ-5407	FEMAL E	Not Available	2683	Not Available		Colon Adenocarcinoma	Colon	Alive	T1	N0	M0	Stage I
TCGA-AA-3870	FEMAL E	Not Available	912	Not Available		Colon Adenocarcinoma	Colon	Alive	T3	N2	M1	Stage IV
TCGA-AA-	FEM	Not Available	1158	Not Available		Colon Adenocarci	Colon	Dead	T3	N1	M0	Stage

A01P	AL E	ilabl e				noma						III
TCGA - DM- A28E	FE M AL E	150	36 48	75	33. 33 33	Colon Adenocarci noma	Colon	Ali ve	T3	N0	M0	Sta ge IIA
TCGA -AZ- 6598	FE M AL E	Not Ava ilabl e	15 03	Not Available	Colon Adenocarci noma	Colon	De ad	T3	N0	MX	Sta ge II	
TCGA -CK- 5915	M AL E	Not Ava ilabl e	0	Not Available	Colon Adenocarci noma	Colon	Ali ve	T2	N0	MX	Sta ge I	
TCGA -F4- 6459	FE M AL E	162	26 2	55	20. 95 71 7	Colon Adenocarci noma	Colon	De ad	T3	N2 a	M0	Sta ge IIIB
TCGA -D5- 6927	M AL E	177	28 7	76	24. 25 86 7	Colon Adenocarci noma	Colon	Ali ve	T3	N0	M0	Sta ge IIA
TCGA -AA- 3495	M AL E	Not Ava ilabl e	11 27	Not Available	Colon Adenocarci noma	Colon	Ali ve	T2	N0	M0	Sta ge I	
TCGA -AA- 3511	M AL E	Not Ava ilabl e	21 2	Not Available	Colon Adenocarci noma	Colon	Ali ve	T4	N0	M0	Sta ge II	
TCGA -AZ- 4681	FE M AL E	Not Ava ilabl e	32 47	68		Colon Adenocarci noma	Colon	Ali ve	T3	N0	M0	Sta ge IIA
TCGA -AA- A01T	FE M AL E	Not Ava ilabl e	10 05	Not Available	Colon Adenocarci noma	Colon	Ali ve	T3	N1	M0	Sta ge III	
TCGA -AA- 3662	FE M AL E	Not Ava ilabl e	18 4	Not Available	Colon Adenocarci noma	Colon	Ali ve	T4	N2	M1	Sta ge IV	
TCGA -AA-	M AL	Not Ava	54 9	Not Available	Colon Adenocarci	Colon	Ali ve	T3	N0	M0	Sta ge	

A00K	E	ilable				noma						IIA
TCGA -A6- 6780	M AL E	168	61 2	64.1	22. 71 11 7	Colon Mucinous Adenocarci noma	Colon	Ali ve	T3	N0	MX	Sta ge IIA
TCGA -AA- 3688	M AL E	Not Ava ilable	57 8	Not Available	Colon Adenocarci noma	Colon	Ali ve	T3	N1	M1	Sta ge IV	
TCGA -NH- A50V	M AL E	167. 6	58 8	65.9	23. 46 05 1	Colon Adenocarci noma	Colon	Ali ve	T3	N2 a	M0	Sta ge IIIB
TCGA -AA- A02K	M AL E	Not Ava ilable	42 6	Not Available	Colon Adenocarci noma	Colon	De ad	T4	N2	M1	Sta ge IV	
TCGA -AA- A00A	M AL E	Not Ava ilable	11 57	Not Available	Colon Adenocarci noma	Colon	Ali ve	T3	N0	M0	Sta ge IIA	
TCGA -D5- 6534	FE M AL E	170	13 16	94	32. 52 59 5	Colon Mucinous Adenocarci noma	Colon	Ali ve	T3	N0	M0	Sta ge IIA
TCGA -D5- 6539	FE M AL E	165	38 0	63	23. 14 05	Colon Adenocarci noma	Colon	Ali ve	T3	N0	M0	
TCGA -AA- 3851	M AL E	Not Ava ilable	10 06	Not Available	Colon Adenocarci noma	Colon	Ali ve	T3	N0	M0	Sta ge IIA	
TCGA -AD- 6965	M AL E	183	80 5	95	28. 36 75 2	Colon Adenocarci noma	Colon	Ali ve	T4 a	N2 b	M0	Sta ge IIIC
TCGA -G4- 6628	M AL E	169	24 24	91	31. 86 16 3	Colon Adenocarci noma	Colon	Ali ve	T2	N0	M0	Sta ge I
TCGA -AU- M	FE M	157	44 1	83	33. 67	Colon Adenocarci	Colon	Ali ve	T3	N0	M0	Sta ge

3779	AL E				27 7	noma						IIA
TCGA -G4- 6625	FE M AL E	149	27 92	65.5	29. 50 31 8	Colon Adenocarci noma	Colon	Ali ve	T3	N0	M0	Sta ge IIA
TCGA - CM- 4744	M AL E	183	60 9	89.7	26. 78 49 1	Colon Adenocarci noma	Colon	Ali ve	T2	N0	M0	Sta ge I
TCGA -D5- 6530	M AL E	182	62 1	89	26. 86 87 4	Colon Adenocarci noma	Colon	Ali ve	T2	N0	M0	Sta ge I
TCGA -NH- A8F7	FE M AL E	80.3	54 3	175. 3	27 1.8 63 5	Colon Adenocarci noma	Colon	Ali ve	T3	N0	MX	Sta ge IIA
TCGA -AA- 3952	M AL E	Not Ava ilabl e	61	Not Available		Colon Adenocarci noma	Colon	De ad	T3	N2	M0	Sta ge IIIC
TCGA - DM- A285	FE M AL E	175	17 9	72	23. 51 02	Colon Mucinous Adenocarci noma	Colon	De ad	T3	N2	M1	Sta ge IV
TCGA -AU- 6004	FE M AL E	160	82 4	55	21. 48 43 8	Colon Adenocarci noma	Colon	Ali ve	T2	N0	M0	Sta ge I
TCGA - DM- A28F	M AL E	182	10 94	83	25. 05 73 6	Colon Adenocarci noma	Colon	De ad	T3	N1	M0	Sta ge IIIB
TCGA - CM- 4752	M AL E	163	39 6	71.2	26. 79 81 5	Colon Adenocarci noma	Colon	Ali ve	T3	N0	M0	Sta ge IIA
TCGA -A6- 5662	M AL E	180	71 8	84.4	26. 04 93 8	Colon Adenocarci noma	Colon	Ali ve	T3	N2	M1	Sta ge IV A
TCGA -WS- M	FE M	152	21 30	34	14. 71	Colon Mucinous	Colon	Ali ve	T3	N0	MX	Sta ge

AB45	AL E				60 7	Adenocarci noma						IIA
TCGA -RU- A8FL	M AL E	187. 96	11 77	125	35. 38 17 4	Colon Adenocarci noma	Colon	Ali ve	T3	N2 a	MX	Sta ge IIIB
TCGA -AA- A02 W	FE M AL E	Not Ava ilabl e	12 47	Not Available		Colon Adenocarci noma	Colon	Ali ve	T2	N0	M0	Sta ge I
TCGA -CA- 5254	FE M AL E	154	38 6	55	23. 19 10 9	Colon Adenocarci noma	Colon	Ali ve	T3	N0	M0	Sta ge IIA
TCGA -D5- 6930	M AL E	184	40 6	90	26. 58 31 8	Colon Mucinous Adenocarci noma	Colon	Ali ve	T3	N0	M0	Sta ge IIA
TCGA - DM- A28K	M AL E	174	29 88	78	25. 76 29 8	Colon Mucinous Adenocarci noma	Colon	Ali ve	T3	N0	M0	Sta ge IIA
TCGA -AA- 3860	FE M AL E	Not Ava ilabl e	94 5	Not Available		Colon Adenocarci noma	Colon	Ali ve	T3	N1	M0	Sta ge IIIB
TCGA -D5- 6932	M AL E	168	34 6	75	26. 57 31 3	Colon Adenocarci noma	Colon	Ali ve	T3	N0	M0	Sta ge IIA
TCGA -AA- 3819	FE M AL E	Not Ava ilabl e	76 1	Not Available		Colon Adenocarci noma	Colon	Ali ve	T3	N0	M0	Sta ge IIA
TCGA -AA- 3872	M AL E	Not Ava ilabl e	0	Not Available		Colon Adenocarci noma	Colon	Ali ve	T4	N2	M1	Sta ge IV
TCGA -A6- A56B	M AL E	180	17 11	77.2	23. 82 71 6	Colon Adenocarci noma	Colon	De ad	T3	N1	M0	Sta ge IIIB
TCGA -AA-	FE M	Not Ava	61	Not Available		Colon Adenocarci	Colon	De ad	T3	N2	M1	Sta ge

A02H	AL E	ilabl e				noma						IV
TCGA -AA- 3532	M AL E	Not Ava ilabl e	88 2	Not Available		Colon Adenocarci noma	Colon	Ali ve	T3	N0	M0	Sta ge IIA
TCGA -D5- 6931	M AL E	178	36 5	70	22. 09 31 7	Colon Adenocarci noma	Colon	Ali ve	T4 b	N2	M0	Sta ge IIIC
TCGA -AZ- 4308	FE M AL E	Not Ava ilabl e	33 24	73		Colon Adenocarci noma	Colon	Ali ve	T3	N1	M0	Sta ge IIIB
TCGA -AZ- 6603	FE M AL E	Not Ava ilabl e	89 9	Not Available		Colon Adenocarci noma	Colon	De ad	T2	N1	MX	

Table S3. The detailed clinical information for dataset TCGA-READ.

A0_S ampl es	A18 _Se x	A19 _He ight	A1 _O S	A20 _W eigh t	A2 _B MI	A22_histolo gical_type	A23_Tu mor_tis sue_site	A2 _Ev ent	A3 _T	A4 _N	A5 _M	A6 _St age
TCG A- AG- A002	MA LE	Not Ava ilabl e	63 8	Not Available		Rectal Adenocarci noma	Rectum	Ali ve	T2	N0	M0	Sta ge I
TCG A- AG- 3890	MA LE	Not Ava ilabl e	51 8	Not Available		Rectal Adenocarci noma	Rectum	Ali ve	T2	N0	M0	Sta ge I
TCG A-EI- 6511	MA LE	165	48 2	69	25. 34 43 5	Rectal Adenocarci noma	Rectum	Ali ve	T3	N1	M0	Sta ge IIIB
TCG A- AG- A01J	FE MA LE	Not Ava ilabl e	31	Not Available		Rectal Adenocarci noma	Rectum	Ali ve	T3	N0	M0	Sta ge IIA
TCG A-	MA LE	Not Ava	48 5	Not Available		Rectal Adenocarci	Rectum	Ali ve	T2	N0	M0	Sta ge

AG-A014		ilable				noma						I
TCG A-DC-4745	FE MALE	165	639	93.8	34.45363	Rectal Adenocarcinoma	Rectum	Alive	T3	N1a	M0	Stage IIIB
TCG A-AG-A015	FE MALE	Not Available	1096	Not Available		Rectal Adenocarcinoma	Rectum	Alive	T1	N0	M0	Stage I
TCG A-AF-2691	FE MALE	167.6	1309	52.4	18.65448	Rectal Adenocarcinoma	Rectum	Alive	T1	N0	M0	Stage I
TCG A-AG-3891	FE MALE	Not Available	548	Not Available		Rectal Adenocarcinoma	Rectum	Alive	T2	N0	M0	Stage I
TCG A-DC-5337	MALE	165	792	69.4	25.49128	Rectal Adenocarcinoma	Rectum	Alive	T1	N0	M0	Stage I
TCG A-AG-4015	FE MALE	Not Available	0	Not Available		Rectal Adenocarcinoma	Rectum	Alive	T3	N0	M0	Stage IIA
TCG A-DC-6158	MALE	160	334	71.7	28.00781	Rectal Adenocarcinoma	Rectum	Dead	T2	N0	M0	Stage I
TCG A-DY-A1DE	FE MALE	160	3932	70	27.34375	Rectal Adenocarcinoma	Rectum	Alive	T3	N0	M0	Stage IIA
TCG A-AF-3912	Not Available	Not Available		Not Available		Not Available	Not Available					
TCG A-AG-A02G	MALE	Not Available	1185	Not Available		Rectal Adenocarcinoma	Rectum	Dead	T2	N1	M1	Stage IV
TCG A-	MALE	180.3	1155	107.6	33.09	Not Available	Not Available	Alive	T2	N0	MX	Stage

AF-2693					945		e					I
TCG A-AG-4009	MALE	Not Available	426	Not Available		Rectal Adenocarcinoma	Rectum	Alive	T2	N0	M0	Stage I
TCG A-EI-6513	MALE	175	497	78	25.4693	Rectal Adenocarcinoma	Rectum	Alive	T3	N1	M0	Stage IIIB
TCG A-AG-A00H	MALE	Not Available	790	Not Available		Rectal Adenocarcinoma	Rectum	Alive	T3	N0	M0	Stage IIA
TCG A-DT-5265	MALE	Not Available	384	Not Available		Rectal Mucinous Adenocarcinoma	Rectum	Alive	T3	N0	M0	Stage II
TCG A-AG-3586	FEMALE	Not Available	31	Not Available		Not Available	Rectum	Alive	T3	N2	M0	Stage III
TCG A-BM-6198	MALE	Not Available	646	119		Rectal Adenocarcinoma	Rectum	Alive	T3	N1		Stage IIIB
TCG A-AF-A56K	MALE	182.5	2635	145.5	43.68549	Rectal Adenocarcinoma	Rectum	Alive	T3	N0	M0	Stage IIA
TCG A-DC-6157	MALE	185	1581	116	33.89335	Rectal Adenocarcinoma	Rectum	Alive	T2	N0	M0	Stage I
TCG A-AG-3893	MALE	Not Available	1065	Not Available		Rectal Adenocarcinoma	Rectum	Alive	T3	N1	M0	Stage IIIB
TCG A-AF-3914	MALE	172.7	1146	64.2	21.52536	Rectal Adenocarcinoma	Rectum	Alive	T3	N2a	M0	Stage IIIB
TCG A-EI-	FEMALE	162	625	65	24.76	Rectal Adenocarci	Rectum	Alive	T3	N0	M0	Stage

6506	LE				75 7	noma						IIA
TCG A-EI- 6508	FE MA LE	159	63 6	66	26. 10 65 6	Rectal Adenocarci noma	Rectum	Ali ve	T3	N1 a	M0	Sta ge IIIB
TCG A- AH- 6644	MA LE	Not Ava ilabl e	83 8	Not Available		Rectal Adenocarci noma	Rectum	Ali ve	T3	NX	M X	
TCG A-EI- 6884	MA LE	166	32 8	73	26. 49 15 1	Rectal Adenocarci noma	Rectum	Ali ve	T3	N1	M0	Sta ge IIIA
TCG A- CL- 5917	FE MA LE	Not Ava ilabl e	23 76	Not Available		Rectal Adenocarci noma	Rectum	Ali ve	T3	N2	M X	Sta ge IIIC
TCG A-EI- 7002	MA LE	185	36 4	93	27. 17 31 2	Rectal Adenocarci noma	Rectum	Ali ve	T3	N2	M1	Sta ge IV
TCG A- CI- 6623	MA LE	Not Ava ilabl e	14 43	Not Available		Rectal Adenocarci noma	Rectum	Ali ve	T1	N0	M0	Sta ge I
TCG A- CL- 4957	FE MA LE	Not Ava ilabl e	42 5	Not Available		Rectal Adenocarci noma	Rectum	Ali ve	T3	N1	M0	
TCG A- G5- 6233	MA LE	176. 9	55 6	97.7	31. 22 04 3	Rectal Adenocarci noma	Rectum	De ad	T3	N2	M0	
TCG A- F5- 6812	MA LE	188	11 10	90	25. 46 40 1	Rectal Adenocarci noma	Rectum	Ali ve	T3	N0	M0	Sta ge IIA
TCG A- AG- 3574	FE MA LE	Not Ava ilabl e	91	Not Available		Rectal Adenocarci noma	Rectum	De ad	T3	N0	M0	Sta ge II
TCG A-	FE MA	Not Ava	94 3	Not Available		Rectal Adenocarci	Rectum	Ali ve	T2	N0	M1	Sta ge

AG-A01N	LE	ilable				noma						IV
TCGA-AG-3612	FEMALE	Not Available	68	Not Available		Rectal Adenocarcinoma	Rectum	Alive	T3	N1	M0	Stage IIIB
TCGA-AG-A023	FEMALE	Not Available	1581	Not Available		Rectal Adenocarcinoma	Rectum	Dead	T4	N2	M1	Stage IV
TCGA-AG-A01L	MAL	Not Available	0	Not Available		Rectal Adenocarcinoma	Rectum	Alive	T3	N1	M0	Stage IIIB
TCGA-F5-6861	FEMALE	162	1160	64	24.38653	Rectal Adenocarcinoma	Rectum	Alive	T3	N0	M0	Stage IIA
TCGA-EI-6917	MAL	176	531	80	25.82645	Rectal Adenocarcinoma	Rectum	Alive	T3	N1	M0	Stage IIIA
TCGA-AG-3598	MAL	Not Available	1522	Not Available		Rectal Adenocarcinoma	Rectum	Alive	T3	N0	M0	Stage IIA
TCGA-AG-3883	MAL	Not Available	31	Not Available		Rectal Adenocarcinoma	Rectum	Alive	T2	N0	M0	Stage I
TCGA-CI-6619	MAL	Not Available	184	Not Available		Rectal Adenocarcinoma	Rectum	Alive	T3	N1c	M1	Stage IV
TCGA-AH-6897	MAL	180.5	804	86.4	26.51913	Rectal Adenocarcinoma	Rectum	Alive	T2	N0	M0	Stage I
TCGA-AG-4007	MAL	Not Available	31	Not Available		Rectal Adenocarcinoma	Rectum	Alive	T4	N2	M1	Stage IV
TCGA	FEMALE	Not Available	15	Not Available		Rectal	Rectum	Alive	T1	N0	M0	Sta

A-AG-A025	MALE	Available	20	Available		Adenocarcinoma		ve				ge I
TCG A-DY-A1D G	MALE	175	1566	86	28.08163	Rectal Adenocarcinoma	Rectum	Dead	T3	N1	M1	Stage IV A
TCG A-DC-6682	MALE	184	762	172.4	50.92155	Rectal Adenocarcinoma	Rectum	Alive	T3	N0	M0	Stage IIA
TCG A-DC-6683	MALE	183	762	82.6	24.66482	Rectal Adenocarcinoma	Rectum	Alive	T3	N1b	M0	Stage IIIB
TCG A-AG-3901	FEMALE	Not Available	761	Not Available		Rectal Mucinous Adenocarcinoma	Rectum	Alive	T3	N1	M0	Stage IIIB
TCG A-AG-A020	FEMALE	Not Available	31	Not Available		Rectal Mucinous Adenocarcinoma	Rectum	Alive	T3	N1	M0	Stage III
TCG A-AF-A56 N	FEMALE	165.1	360	78.1	28.65213	Rectal Adenocarcinoma	Rectum	Alive	T3	N0	M0	Stage IIA
TCG A-DC-6160	MALE	175.4	1339	100.1	32.5368	Rectal Adenocarcinoma	Rectum	Alive	T2	N0	M0	Stage I
TCG A-AF-6655	MALE	173	609	53.2	17.7754	Rectal Adenocarcinoma	Rectum	Alive	T2	N1	M0	Stage IIIA
TCG A-AG-3575	MALE	Not Available	365	Not Available		Rectal Adenocarcinoma	Rectum	Alive	T3	N0	M0	Stage II
TCG A-EI-6883	MALE	180	350	73	22.5308	Rectal Adenocarcinoma	Rectum	Alive	T3	N0	M0	Stage IIC

					6							
TCG A- AF- 3400	MA LE	177. 8	10 49	85.4	27. 01 43 4	Rectal Mucinous Adenocarci noma	Rectum	Ali ve	T3	N0	M0	Sta ge IIA
TCG A- AG- 3583	MA LE	Not Ava ilabl e	61 0	Not Available	Rectal Mucinous Adenocarci noma	Rectum	De ad	T3	N2	M1	Sta ge IV	
TCG A- AG- 3584	MA LE	Not Ava ilabl e	73 0	Not Available	Rectal Adenocarci noma	Rectum	De ad	T3	N2	M1	Sta ge IV	
TCG A- CI- 6620	FE MA LE	Not Ava ilabl e	10 09	Not Available	Rectal Adenocarci noma	Rectum	Ali ve	T3	N1	M1	Sta ge IV A	
TCG A- DC- 5869	FE MA LE	170	94 3	62.4	21. 59 17	Rectal Adenocarci noma	Rectum	Ali ve	T3	N1 a	M0	Sta ge IIIB
TCG A- G5- 6235	MA LE	169	16 96	77.6	27. 16 99 2	Rectal Adenocarci noma	Rectum	Ali ve	T3	N1	M X	Sta ge IIIB
TCG A- AF- 4110	MA LE	188	91 2	92	26. 02 98 8	Not Available	Not Availabl e	Ali ve	T4 a	N2 b	M X	Sta ge IV A
TCG A- AG- 3581	MA LE	Not Ava ilabl e	21 5	Not Available	Rectal Adenocarci noma	Rectum	Ali ve	T2	N0	M0	Sta ge I	
TCG A- AF- 3913	MA LE	180	31 6	95.5	29. 47 53 1	Rectal Adenocarci noma	Rectum	De ad	T3	N1	M1	Sta ge IV
TCG A- AF- 2692	FE MA LE	170	41 2	64.4	22. 28 37 4	Not Available	Not Availabl e	Ali ve	T3	N0	M0	Sta ge IIA
TCG A- AG-	FE MA LE	Not Ava ilabl	10 35	Not Available	Rectal Adenocarci noma	Rectum	Ali ve	T3	N0	M0	Sta ge IIA	

3593		e										
TCG A-AG-3591	FE MALE	Not Available	1035	Not Available		Rectal Adenocarcinoma	Rectum	Alive	T3	N0	M0	Stage IIA
TCG A-F5-6702	MALE	172	869	76	25.68956	Rectal Adenocarcinoma	Rectum	Dead	T3	N1	M1	Stage IVA
TCG A-AG-3898	MALE	Not Available	1461	Not Available		Rectal Adenocarcinoma	Rectum	Alive	T3	N0	M0	Stage IIA
TCG A-AG-A036	MALE	Not Available	3562	Not Available		Rectal Adenocarcinoma	Rectum	Alive	T3	N2	M0	Stage III
TCG A-AG-3599	MALE	Not Available	366	Not Available		Not Available	Rectum	Alive	T2	N0	M0	Stage I
TCG A-AG-4005	MALE	Not Available	427	Not Available		Rectal Adenocarcinoma	Rectum	Alive	T3	N2	M1	Stage IV
TCG A-AG-3902	MALE	Not Available	974	Not Available		Rectal Adenocarcinoma	Rectum	Alive	T3	N0	M0	Stage IIA
TCG A-AG-3906	FE MALE	Not Available	608	Not Available		Rectal Adenocarcinoma	Rectum	Alive	T2	N0	M0	Stage I
TCG A-AG-4001	FE MALE	Not Available	1096	Not Available		Rectal Adenocarcinoma	Rectum	Alive	T3	N0	M0	Stage IIA
TCG A-AG-3580	MALE	Not Available	244	Not Available		Rectal Adenocarcinoma	Rectum	Alive	T1	N0	M0	Stage I
TCG A-AF-	FE MALE	165	512	96.6	35.4820	Rectal Adenocarcinoma	Rectum	Dead	T2	N0	M0	Stage I

5654					9							
TCG A-AG-3601	MALE	Not Available	0	Not Available		Rectal Adenocarcinoma	Rectum	Alive	T4	N1	M0	Stage IIIB
TCG A-AG-3999	FEMALE	Not Available	853	Not Available		Rectal Adenocarcinoma	Rectum	Alive	T3	N2	M0	Stage IIIC
TCG A-AF-3911	MALE	180.3	1148	94.5	29.06969	Rectal Adenocarcinoma	Rectum	Alive	T3	N2	MX	Stage IIIC
TCG A-DY-A1DD	FEMALE	156	1741	42	17.25838	Rectal Adenocarcinoma	Rectum	Dead	T3	N1	M0	Stage IIIB
TCG A-G5-6641	MALE	189.3	804	118.6	33.09661	Rectal Mucinous Adenocarcinoma	Rectum	Alive	T1	N1	MX	Stage IIIA
TCG A-AG-3725	FEMALE	Not Available	0	Not Available		Rectal Adenocarcinoma	Rectum	Alive	T3	N2	M0	Stage III
TCG A-AG-4008	MALE	Not Available	518	Not Available		Rectal Adenocarcinoma	Rectum	Alive	T3	N0	M0	Stage IIA
TCG A-AG-3882	FEMALE	Not Available	608	Not Available		Rectal Adenocarcinoma	Rectum	Alive	T2	N0	M0	Stage I
TCG A-EI-6512	FEMALE	170	538	61	21.10727	Rectal Adenocarcinoma	Rectum	Alive	T3	N1	M0	Stage IIIB
TCG A-EI-6882	MALE	178	262	108	34.08661	Rectal Mucinous Adenocarcinoma	Rectum	Alive	T3	N0	M0	Stage IIA
TCG A-	FEMALE	Not Available	0	Not Available		Rectal Adenocarci	Rectum	Alive	T3	N0	M0	Stage

AG-A01W	LE	ilable				noma						II
TCG A-F5-6464	FEMALE	159	303	68	26.89767	Rectal Adenocarcinoma	Rectum	Dead	T4b	N2a	M0	Stage IIIC
TCG A-AG-3727	FEMALE	Not Available	30	Not Available		Rectal Adenocarcinoma	Rectum	Alive	T3	N1	M0	Stage III
TCG A-AG-3909	FEMALE	Not Available	608	Not Available		Rectal Adenocarcinoma	Rectum	Alive	T3	N1	M0	Stage IIIB
TCG A-F5-6864	FEMALE	157	379	78	31.6429	Rectal Adenocarcinoma	Rectum	Alive	T3	N2a	M0	Stage IIIB
TCG A-AG-3582	MAL	Not Available	1096	Not Available		Rectal Adenocarcinoma	Rectum	Dead	T3	N1	M1	Stage IV
TCG A-AG-3594	MAL	Not Available	61	Not Available		Rectal Mucinous Adenocarcinoma	Rectum	Dead	T3	N0	M0	Stage IIA
TCG A-AF-6136	FEMALE	161.3	741	67.2	25.82858	Rectal Adenocarcinoma	Rectum	Alive	T3	N1b	MX	Stage IIIB
TCG A-AG-3878	MAL	Not Available	30	Not Available		Rectal Adenocarcinoma	Rectum	Alive	T2	N0	M0	Stage I
TCG A-G5-6572	MAL	185.4	1432	140	40.72945	Rectal Adenocarcinoma	Rectum	Dead				
TCG A-AG-A00C	FEMALE	Not Available	183	Not Available		Rectal Adenocarcinoma	Rectum	Alive	T3	N1	M0	Stage IIIB
TCG	FE	Not	31	Not		Rectal	Rectum	Ali	T2	N0	M0	Sta

A-AG-3896	MALE	Available		Available		Adenocarcinoma		ve				ge I
TCG A-EI-6514	FEMALE	Not Available	496	Not Available		Rectal Adenocarcinoma	Rectum	Alive	T3	N0	M0	Stage IIA
TCG A-AH-6547	FEMALE	Not Available	76	Not Available		Rectal Adenocarcinoma	Rectum	Dead	T3	N0	MX	
TCG A-AH-6549	MALE	Not Available	532	Not Available		Rectal Adenocarcinoma	Rectum	Alive	T3	NX	MX	
TCG A-AG-3609	FEMALE	Not Available	608	Not Available		Rectal Adenocarcinoma	Rectum	Alive	T3	N2	M0	Stage IIIC
TCG A-F5-6813	MALE	174	598	85	28.07504	Rectal Adenocarcinoma	Rectum	Dead	T4a	N2	M0	Stage IIIC
TCG A-AG-A00Y	MALE	Not Available	700	Not Available		Rectal Adenocarcinoma	Rectum	Alive	T3	N0	M0	Stage IIA
TCG A-EF-5831	MALE	162	127	60	22.86237	Rectal Adenocarcinoma	Rectum	Alive	T3	N0	M0	Stage IIA
TCG A-AF-2687	MALE	163	1427	68.2	25.66901	Rectal Adenocarcinoma	Rectum	Alive	T3	N2	M0	Stage IIIC
TCG A-AH-6544	MALE	177.8	1173	91	28.78577	Rectal Adenocarcinoma	Rectum	Alive	T3	N1	M1	
TCG A-AG-A008	FEMALE	Not Available	424	Not Available		Rectal Mucinous Adenocarcinoma	Rectum	Alive	T2	N0	M0	Stage I
TCG	FE	165	97	88	32.	Rectal	Rectum	Ali	T3	N0	M0	Sta

A-F5-6811	MALE		9		32 32 3	Adenocarcinoma		ve				ge IIA
TCGA-DC-6156	MALE	175	94 3	86.1	28. 11 42 9	Rectal Adenocarcinoma	Rectum	Alive	T4 a	N2 b	M1 a	Sta ge IV A
TCGA-EI-7004	FEMALE	172	25 7	88	29. 74 58 1	Rectal Mucinous Adenocarcinoma	Rectum	Alive	T4 a	N2 b	M0	
TCGA-DC-6681	FEMALE	151	79 0	63.1	27. 67 42 2	Rectal Adenocarcinoma	Rectum	Alive	T3	N2 a	M1 a	Sta ge IV A
TCGA-AG-3578	FEMALE	Not Available	97 4	Not Available		Rectal Mucinous Adenocarcinoma	Rectum	Alive	T3	N0	M0	Sta ge IIA
TCGA-AG-3600	MALE	Not Available	18 4	Not Available		Rectal Adenocarcinoma	Rectum	Alive	T3	N2	M0	Sta ge IIIC
TCGA-AG-3892	FEMALE	Not Available	39 6	Not Available		Rectal Adenocarcinoma	Rectum	Alive	T1	N0	M0	Sta ge I
TCGA-AG-4021	FEMALE	Not Available	12 1	Not Available		Rectal Adenocarcinoma	Rectum	Dead	T3	N2	M1	Sta ge IV
TCGA-EI-6881	MALE	176	49 9	86	27. 76 34 3	Rectal Adenocarcinoma	Rectum	Alive	T3	N1	M0	Sta ge IIIA
TCGA-CI-6622	MALE	Not Available	13 62	Not Available		Rectal Adenocarcinoma	Rectum	Alive	T4	N0	M0	Sta ge IIB
TCGA-DY-A1DC	FEMALE	Not Available	12 58	68		Rectal Adenocarcinoma	Rectum	Dead	T3	N0	M0	Sta ge IIA

TCG A- CL- 5918	FE MA LE	Not Ava ilabl e	0	Not Available		Rectal Adenocarci noma	Rectum	Ali ve	T3	N0	M X	Sta ge IIA
TCG A-EI- 6509	MA LE	178	51 7	82	25. 88 05 7	Rectal Adenocarci noma	Rectum	Ali ve	T3	N2 b	M0	Sta ge IIIC
TCG A- F5- 6863	FE MA LE	166	36 1	77	27. 94 31	Rectal Adenocarci noma	Rectum	De ad	T4 a	N1	M0	Sta ge IIIB
TCG A- AG- A016	MA LE	Not Ava ilabl e	27 6	Not Available		Rectal Adenocarci noma	Rectum	Ali ve	T3	N2	M1	Sta ge IV
TCG A- AG- 3887	MA LE	Not Ava ilabl e	11 24	Not Available		Rectal Mucinous Adenocarci noma	Rectum	Ali ve	T3	N0	M0	Sta ge IIA
TCG A- AG- 3592	MA LE	Not Ava ilabl e	10 35	Not Available		Rectal Adenocarci noma	Rectum	Ali ve	T3	N0	M0	Sta ge IIA
TCG A- AG- 3602	FE MA LE	Not Ava ilabl e	0	Not Available		Rectal Adenocarci noma	Rectum	Ali ve	T3	N2	M0	Sta ge IIIC
TCG A-EI- 6507	MA LE	176	60 7	54	17. 43 28 5	Rectal Adenocarci noma	Rectum	Ali ve	T3	N0	M0	Sta ge IIA
TCG A- AG- 3894	MA LE	Not Ava ilabl e	42 6	Not Available		Rectal Adenocarci noma	Rectum	Ali ve	T3	N0	M0	Sta ge IIA
TCG A- AG- 3611	MA LE	Not Ava ilabl e	42 4	Not Available		Rectal Adenocarci noma	Rectum	Ali ve	T3	N0	M0	Sta ge IIA
TCG A- DY- A0XA	FE MA LE	159	38 46	64	25. 31 54 5	Rectal Adenocarci noma	Rectum	Ali ve	T3	N0	M0	Sta ge IIA

TCG A- F5- 6571	FE MA LE	166	12 88	80	29. 03 17 9	Rectal Adenocarci noma	Rectum	Ali ve	T3	N0	M0	Sta ge IIA
TCG A- AG- 3742	FE MA LE	Not Ava ilabl e	30	Not Available		Rectal Adenocarci noma	Rectum	Ali ve	T1	N0	M0	Sta ge I
TCG A- AF- 6672	MA LE	172. 7	74 8	93.8	31. 44 98 2	Rectal Adenocarci noma	Rectum	Ali ve	T4 a	N2 b	M X	Sta ge IV
TCG A- AF- A56L	FE MA LE	159	20 07	74.3	29. 38 96 6	Rectal Adenocarci noma	Rectum	Ali ve	T3	N2	M0	Sta ge IIIC
TCG A- AG- 3731	MA LE	Not Ava ilabl e	11 26	Not Available		Rectal Adenocarci noma	Rectum	Ali ve	T3	N1	M1	Sta ge IV
TCG A- DC- 6155	FE MA LE	163	42 5	55.3	20. 81 37 3	Rectal Adenocarci noma	Rectum	Ali ve	T2	N1 b	M0	Sta ge IIIA
TCG A- EF- 5830	MA LE	182	10 6	93	28. 07 63 2	Rectal Adenocarci noma	Rectum	Ali ve	T4 a	N0	M0	Sta ge IIB
TCG A- AF- 2689	FE MA LE	163	12 01	55.5	20. 88 90 1	Rectal Adenocarci noma	Rectum	De ad	T3	N2	M1	Sta ge IV
TCG A- AG- A02 N	MA LE	Not Ava ilabl e	18 85	Not Available		Rectal Adenocarci noma	Rectum	Ali ve	T3	N0	M0	Sta ge II
TCG A- DY- A1H8	FE MA LE	160	99 2	40	15. 62 5	Rectal Adenocarci noma	Rectum	De ad	T2	N1	M0	Sta ge IIIA
TCG A- AG- LE	FE MA LE	Not Ava ilabl	54 6	Not Available		Rectal Adenocarci noma	Rectum	Ali ve	T3	N1	M0	Sta ge IIIB

3885		e										
TCG A-AG-A01Y	FE MALE	Not Available	0	Not Available		Rectal Adenocarcinoma	Rectum	Alive	T3	N0	M0	Stage II
TCG A-AG-3728	MALE	Not Available	912	Not Available		Rectal Adenocarcinoma	Rectum	Alive	T3	N1	M0	Stage IIIB
TCG A-AH-6643	MALE	180.5	1314	84.4	25.90526	Rectal Adenocarcinoma	Rectum	Dead	T3	N2b	M0	Stage IIIC
TCG A-DY-A1DF	FE MALE	156	734	75	30.81854	Rectal Adenocarcinoma	Rectum	Dead	T3	N2	M0	Stage IIIC
TCG A-AG-3881	FE MALE	Not Available	579	Not Available		Not Available	Rectum	Alive	T3	N0	M0	Stage IIA
TCG A-AF-2690	FE MALE	160	524	54.5	21.28906	Rectal Adenocarcinoma	Rectum	Dead	T3	N2	M0	Stage IIIC
TCG A-AG-3587	MALE	Not Available	1400	Not Available		Rectal Adenocarcinoma	Rectum	Alive	T2	N0	M0	Stage I
TCG A-AG-3732	FE MALE	Not Available	1003	Not Available		Rectal Adenocarcinoma	Rectum	Alive	T2	N0	M0	Stage I
TCG A-CI-6621	MALE	Not Available	419	Not Available		Rectal Adenocarcinoma	Rectum	Alive	T3	N1	MX	Stage IIIB
TCG A-F5-6814	MALE	175	1131	61	19.91837	Rectal Adenocarcinoma	Rectum	Alive	T3	N0	M0	Stage IIA
TCG A-CI-	FE MALE	Not Available	1466	Not Available		Rectal Adenocarcinoma	Rectum	Alive	T2	N0	M0	Stage I

6624		e										
TCG A- AG- A02X	MA LE	Not Ava ilabl e	12 47	Not Available		Rectal Adenocarci noma	Rectum	Ali ve	T2	N0	M0	Sta ge I
TCG A- AG- 3605	FE MA LE	Not Ava ilabl e	30	Not Available		Rectal Adenocarci noma	Rectum	Ali ve	T3	N1	M1	Sta ge IV
TCG A- F5- 6465	FE MA LE	170	15 06	62	21. 45 32 9	Rectal Adenocarci noma	Rectum	Ali ve	T3	N0	M0	Sta ge IIA
TCG A-EI- 6510	FE MA LE	150	55 6	59	26. 22 22 2	Rectal Adenocarci noma	Rectum	Ali ve	T2	N0	M X	
TCG A- AG- 3726	FE MA LE	Not Ava ilabl e	24 3	Not Available		Rectal Adenocarci noma	Rectum	Ali ve	T2	N0	M0	Sta ge I
TCG A-EI- 6885	FE MA LE	164	41 5	53	19. 70 55 3	Rectal Adenocarci noma	Rectum	Ali ve	T3	N1 b	M1	Sta ge IV
TCG A- AG- 4022	FE MA LE	Not Ava ilabl e	14 00	Not Available		Rectal Adenocarci noma	Rectum	Ali ve	T3	N0	M0	Sta ge II
TCG A- DC- 6154	FE MA LE	162	36 5	59.4	22. 63 37 4	Rectal Adenocarci noma	Rectum	Ali ve	T4 a	N2 b	M1	Sta ge IV A
TCG A- AG- A026	MA LE	Not Ava ilabl e	59	Not Available		Rectal Adenocarci noma	Rectum	De ad	T4	N0	M0	Sta ge II
TCG A- AG- 3608	FE MA LE	Not Ava ilabl e	48 5	Not Available		Rectal Adenocarci noma	Rectum	Ali ve	T3	N0	M0	Sta ge IIA
TCG A- AG-	MA LE	Not Ava ilabl	11 57	Not Available		Rectal Adenocarci noma	Rectum	Ali ve	T3	N1	M0	Sta ge IIIB

A032		e										
TCG A- AG- A011	MA LE	Not Ava ilabl e	11 26	Not Available		Rectal Adenocarci noma	Rectum	Ali ve	T3	N0	M0	Sta ge IIA
TCG A- AH- 6903	MA LE	183	59 2	74.8	22. 33 56 9	Rectal Mucinous Adenocarci noma	Rectum	Ali ve	T3	N1 b	M0	Sta ge IIIB
TCG A- DC- 4749	MA LE	179	76 2	87.1	27. 18 39 2	Rectal Adenocarci noma	Rectum	Ali ve	T2	N0	M0	Sta ge I

Table S4. The detailed clinical information for dataset GSE147597.

title	geo_acc ession	organis m_ch1	age: ch1	disease state:ch1	gen der
Patient1 without LM primary CRC cancer tissue (circRNA)	GSM44 35040	Homo sapiens	age: 65	colorectal cancer (CRC) without liver metastasis	mal e
Patient2 without LM primary CRC cancer tissue (circRNA)	GSM44 35041	Homo sapiens	age: 72	colorectal cancer (CRC) without liver metastasis	mal e
Patient3 without LM primary CRC cancer tissue (circRNA)	GSM44 35042	Homo sapiens	age: 67	colorectal cancer (CRC) without liver metastasis	fem ale
Patient4 without LM primary CRC cancer tissue (circRNA)	GSM44 35043	Homo sapiens	age: 61	colorectal cancer (CRC) without liver metastasis	fem ale
Patient5 without LM primary CRC cancer tissue (circRNA)	GSM44 35044	Homo sapiens	age: 59	colorectal cancer (CRC) without liver metastasis	mal e
Patient6 without LM primary CRC cancer tissue (circRNA)	GSM44 35045	Homo sapiens	age: 74	colorectal cancer (CRC) without liver metastasis	mal e
Patient7 without LM primary CRC cancer tissue (circRNA)	GSM44 35046	Homo sapiens	age: 69	colorectal cancer (CRC) without liver metastasis	fem ale
Patient8 without LM primary CRC cancer tissue (circRNA)	GSM44 35047	Homo sapiens	age: 66	colorectal cancer (CRC) without liver metastasis	mal e
Patient9 without LM	GSM44	Homo	age:	colorectal cancer (CRC)	mal

primary CRC cancer tissue (circRNA)	35048	sapiens	56	without liver metastasis	e
Patient10 without LM primary CRC cancer tissue (circRNA)	GSM44 35049	Homo sapiens	age: 60	colorectal cancer (CRC) without liver metastasis	female
Patient1 with LM primary CRC cancer tissue (circRNA)	GSM44 35050	Homo sapiens	age: 66	colorectal cancer (CRC) with liver metastasis	male
Patient2 with LM primary CRC cancer tissue (circRNA)	GSM44 35051	Homo sapiens	age: 52	colorectal cancer (CRC) with liver metastasis	male
Patient3 with LM primary CRC cancer tissue (circRNA)	GSM44 35052	Homo sapiens	age: 80	colorectal cancer (CRC) with liver metastasis	male
Patient4 with LM primary CRC cancer tissue (circRNA)	GSM44 35053	Homo sapiens	age: 70	colorectal cancer (CRC) with liver metastasis	female
Patient5 with LM primary CRC cancer tissue (circRNA)	GSM44 35054	Homo sapiens	age: 57	colorectal cancer (CRC) with liver metastasis	male
Patient6 with LM primary CRC cancer tissue (circRNA)	GSM44 35055	Homo sapiens	age: 43	colorectal cancer (CRC) with liver metastasis	female
Patient7 with LM primary CRC cancer tissue (circRNA)	GSM44 35056	Homo sapiens	age: 67	colorectal cancer (CRC) with liver metastasis	male
Patient8 with LM primary CRC cancer tissue (circRNA)	GSM44 35057	Homo sapiens	age: 67	colorectal cancer (CRC) with liver metastasis	female
Patient9 with LM primary CRC cancer tissue (circRNA)	GSM44 35058	Homo sapiens	age: 83	colorectal cancer (CRC) with liver metastasis	female
Patient10 with LM primary CRC cancer tissue (circRNA)	GSM44 35059	Homo sapiens	age: 34	colorectal cancer (CRC) with liver metastasis	female

Table S5. The detailed clinical information for dataset GSE50117.

title	geo_ac	characteri	characteris	descripti	gend	localisat	tissue:ch
	cession	stics_ch1	tics_ch1.2	on	er:ch	ion:ch1	1
CRC vs NOR	GSM12 14408	tissue: adenocar	localisatio n: left	colorectal	male	left colon	adenocarcinoma

colorectal adenocarcinoma, patient 108		cinoma	colon	adenocarcinoma biopsy			
CRC vs NOR colorectal adenocarcinoma, patient 115	GSM12 14409	tissue: adenocarcinoma	localisation: sigmoid colon	colorectal adenocarcinoma biopsy	male	sigmoid colon	adenocarcinoma
CRC vs NOR colorectal adenocarcinoma, patient 117	GSM12 14410	tissue: adenocarcinoma	localisation: right colon	colorectal adenocarcinoma biopsy	male	right colon	adenocarcinoma
CRC vs NOR colorectal adenocarcinoma, patient 118	GSM12 14411	tissue: adenocarcinoma	localisation: right angle	colorectal adenocarcinoma biopsy	male	right angle	adenocarcinoma
CRC vs NOR colorectal adenocarcinoma, patient 120	GSM12 14412	tissue: adenocarcinoma	localisation: right colon	colorectal adenocarcinoma biopsy	female	right colon	adenocarcinoma
CRC vs NOR colorectal adenocarcinoma, patient 123	GSM12 14413	tissue: adenocarcinoma	localisation: cecum	colorectal adenocarcinoma biopsy	male	cecum	adenocarcinoma
CRC vs NOR colorectal adenocarcinoma, patient 132	GSM12 14414	tissue: adenocarcinoma	localisation: cecum	colorectal adenocarcinoma biopsy	female	cecum	adenocarcinoma
CRC vs NOR colorectal adenocarci	GSM12 14415	tissue: adenocarcinoma	localisation: right colon	colorectal adenocarcinoma	female	right colon	adenocarcinoma

noma, patient 86				biopsy			
CRC vs NOR colorectal adenocarci noma, patient 89	GSM12 14416	tissue: adenocar cinoma	localisatio n: rectum / anal canal	colorect al adenoca rcinoma biopsy	femal e	rectum / anal canal	adenoca rcinoma
CRC vs NOR colorectal normal mucosa, patient 108	GSM12 14417	tissue: normal mucosa	localisatio n: left colon	colorect al normal mucosa biopsy	male	left colon	normal mucosa
CRC vs NOR colorectal normal mucosa, patient 115	GSM12 14418	tissue: normal mucosa	localisatio n: sigmoid colon	colorect al normal mucosa biopsy	male	sigmoid colon	normal mucosa
CRC vs NOR colorectal normal mucosa, patient 117	GSM12 14419	tissue: normal mucosa	localisatio n: right colon	colorect al normal mucosa biopsy	male	right colon	normal mucosa
CRC vs NOR colorectal normal mucosa, patient 118	GSM12 14420	tissue: normal mucosa	localisatio n: right angle	colorect al normal mucosa biopsy	male	right angle	normal mucosa
CRC vs NOR colorectal normal mucosa, patient 120	GSM12 14421	tissue: normal mucosa	localisatio n: right colon	colorect al normal mucosa biopsy	femal e	right colon	normal mucosa
CRC vs NOR colorectal normal mucosa, patient 123	GSM12 14422	tissue: normal mucosa	localisatio n: cecum	colorect al normal mucosa biopsy	male	cecum	normal mucosa

CRC vs NOR colorectal normal mucosa, patient 132	GSM12 14423	tissue: normal mucosa	localisation: cecum	colorectal normal mucosa biopsy	female	cecum	normal mucosa
CRC vs NOR colorectal normal mucosa, patient 86	GSM12 14424	tissue: normal mucosa	localisation: right colon	colorectal normal mucosa biopsy	female	right colon	normal mucosa
CRC vs NOR colorectal normal mucosa, patient 89	GSM12 14425	tissue: normal mucosa	localisation: rectum / anal canal	colorectal normal mucosa biopsy	female	rectum / anal canal	normal mucosa

Table S6. The detailed clinical information for dataset GSE156355.

title	geo_accession	source_name_ch1	organism_ch1	characteristics_ch1	taxid_ch1	tissue type: ch1
CRC_Normal_Patient1	GSM4729410	Normal colon tissue, CRC Patient 1	Homo sapiens	tissue type: Normal	9606	Normal
CRC_Normal_Patient2	GSM4729411	Normal colon tissue, CRC Patient 2	Homo sapiens	tissue type: Normal	9606	Normal
CRC_Normal_Patient3	GSM4729412	Normal colon tissue, CRC Patient 3	Homo sapiens	tissue type: Normal	9606	Normal
CRC_Normal_Patient4	GSM4729413	Normal colon tissue, CRC Patient 4	Homo sapiens	tissue type: Normal	9606	Normal
CRC_Normal_Patient5	GSM4729414	Normal colon tissue, CRC Patient 5	Homo sapiens	tissue type: Normal	9606	Normal
CRC_Normal_Patient6	GSM4729415	Normal colon tissue, CRC Patient 6	Homo sapiens	tissue type: Normal	9606	Normal
CRC_Tumor_P	GSM4729	Tumor tissue,	Homo	tissue type:	9606	Tum

atient1	416	CRC Patient 1	sapiens	Tumor		or
CRC_Tumor_Patient2	GSM4729417	Tumor tissue, CRC Patient 2	Homo sapiens	tissue type: Tumor	9606	Tumor
CRC_Tumor_Patient3	GSM4729418	Tumor tissue, CRC Patient 3	Homo sapiens	tissue type: Tumor	9606	Tumor
CRC_Tumor_Patient4	GSM4729419	Tumor tissue, CRC Patient 4	Homo sapiens	tissue type: Tumor	9606	Tumor
CRC_Tumor_Patient5	GSM4729420	Tumor tissue, CRC Patient 5	Homo sapiens	tissue type: Tumor	9606	Tumor
CRC_Tumor_Patient6	GSM4729421	Tumor tissue, CRC Patient 6	Homo sapiens	tissue type: Tumor	9606	Tumor