

Supplementary Material

Supplementary Table

Table S1. Sequences of related primers.

Factor	Forward	Reverse
Dvl1	5'-CCCCTCCTTCCACCCAAATG-3'	5'-GTGACTGACCATGGACTCCG-3'
β -catenin	5'-CAGCGACTAAGCAGGAAG-3'	5'-GATGACGAAGAGCACAGAT-3'
β -actin	5'-AGAAGGCTGGGGCTCATTTG-3'	5'-AGGGGCCATCCACAGTCTTC-3'
miR-214	5'-GGACAGGACGCACAGTCA-3'	5'-CAGACGAGGCTCCGTGGT-3'
U6	5'-CTCGCTTCGGCAGCACA-3'	5'-AACGCTTCACGAATTTGCGT-3'

Supplementary Figures

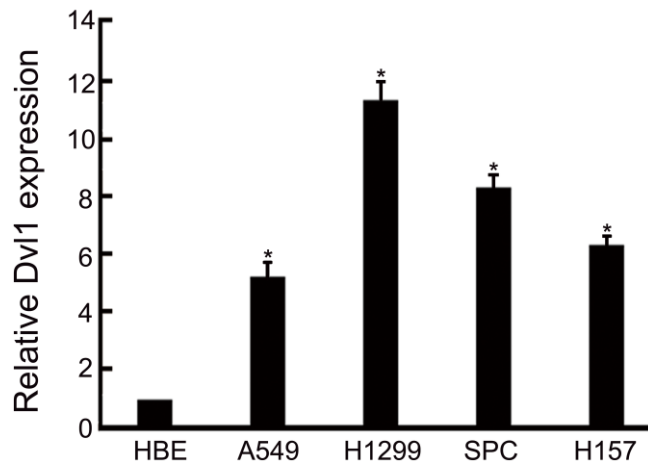


Figure S1. mRNA expression of Dvl1 in NSCLC cell lines.

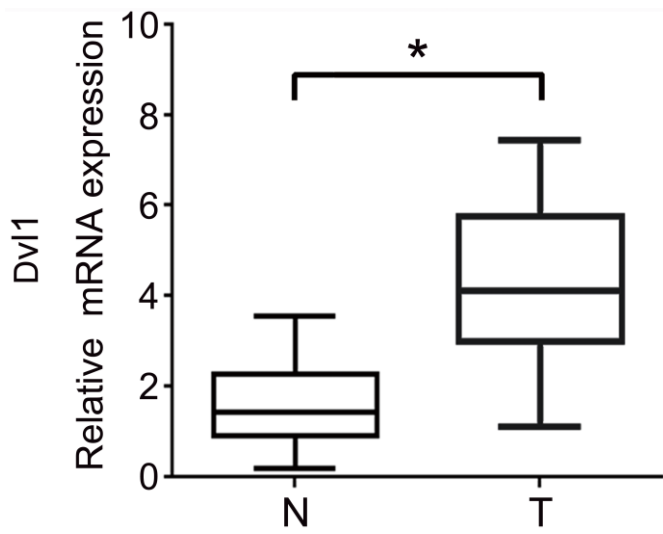


Figure S2. mRNA expression of Dvl1 in NSCLC tissues (T) and paired normal lung tissues (N).

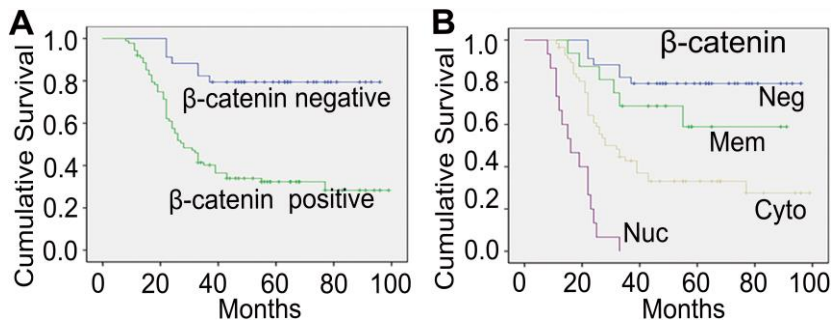


Figure S3. Kaplan–Meier curves of overall survival among patients with NSCLC. (A) The groups with β -catenin-positive expression and negative expression; (B) the groups with β -catenin-negative expression (Neg), positive membranous expression (Mem), positive cytoplasmic expression (Cyto), and positive nuclear expression (Nuc).

Position 1028-1034 of CTNNB1 3' UTR

miR-214

```
5' ... CCAAAGUUGUUGUAACCUGCUGU ...
      |||      |||||
3'   UGACGGACAGACACGGACGACA
```

Figure S4. Bioinformatics analysis using the target prediction software TargetScan.