

Supplementary Figure

Fig. S1

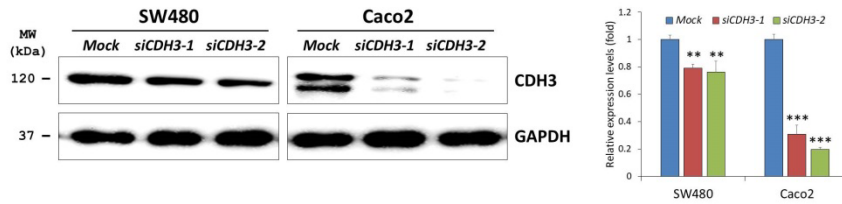


Figure S1. Western blot analyses of *siCDH3-1* and *siCDH3-2* in SW480 or Caco2 cell line

In this experiment, we used two siRNA to silence the *CDH3* gene. As shown in the figure, *siCDH3-2* produced more complete silencing of the *CDH3* gene than *siCDH3-1*. Hence, we used *siCDH3-2* in further experiments. Differences were considered statistically significant compared with control (** $P < 0.01$, *** $P < 0.001$).

Supplement Table

Table 1. Primer sequences used for PCR amplification and luciferase assay in this study

Applications	Primers	Primer sequence (5' → 3')
qRT-PCR	CDH3-F	GGCAGACATGTACGGTGGCGG
	CDH3-R	GCCAAGTTGCTACGGCCACTTCC
	GAPDH-F	TCACCATCTTCCAGGAGCGAGA
	GAPDH-R	TCACTGGCATGGCCTTCCGTG
Luciferase assay	CDH3-WF	GCCTGCAGGGCTCGTCAGGCCACAGAGC
	CDH3-WR	GCTCTGTGGCCTGACGAGCCCTGCAGGC
	CDH3-MF	GCAGAGCTCCCTCACCTCCTCCGCCTCC
	CDH3-MR	CGTCTCGAGCGTCAGACTCATAGCCTGTCTCC