

Figure S1. Kaplan–Meier survival analyses for overall survival of VIM-AS1 in different subgroups stratified by clinical features.

Figure S2. Kaplan–Meier survival analyses for disease-specific survival of VIM-AS1 in different subgroups stratified by clinical features.

Figure S3. Kaplan–Meier survival analyses for progression-free survival of VIM-AS1 in different subgroups stratified by clinical features.

Figure S1

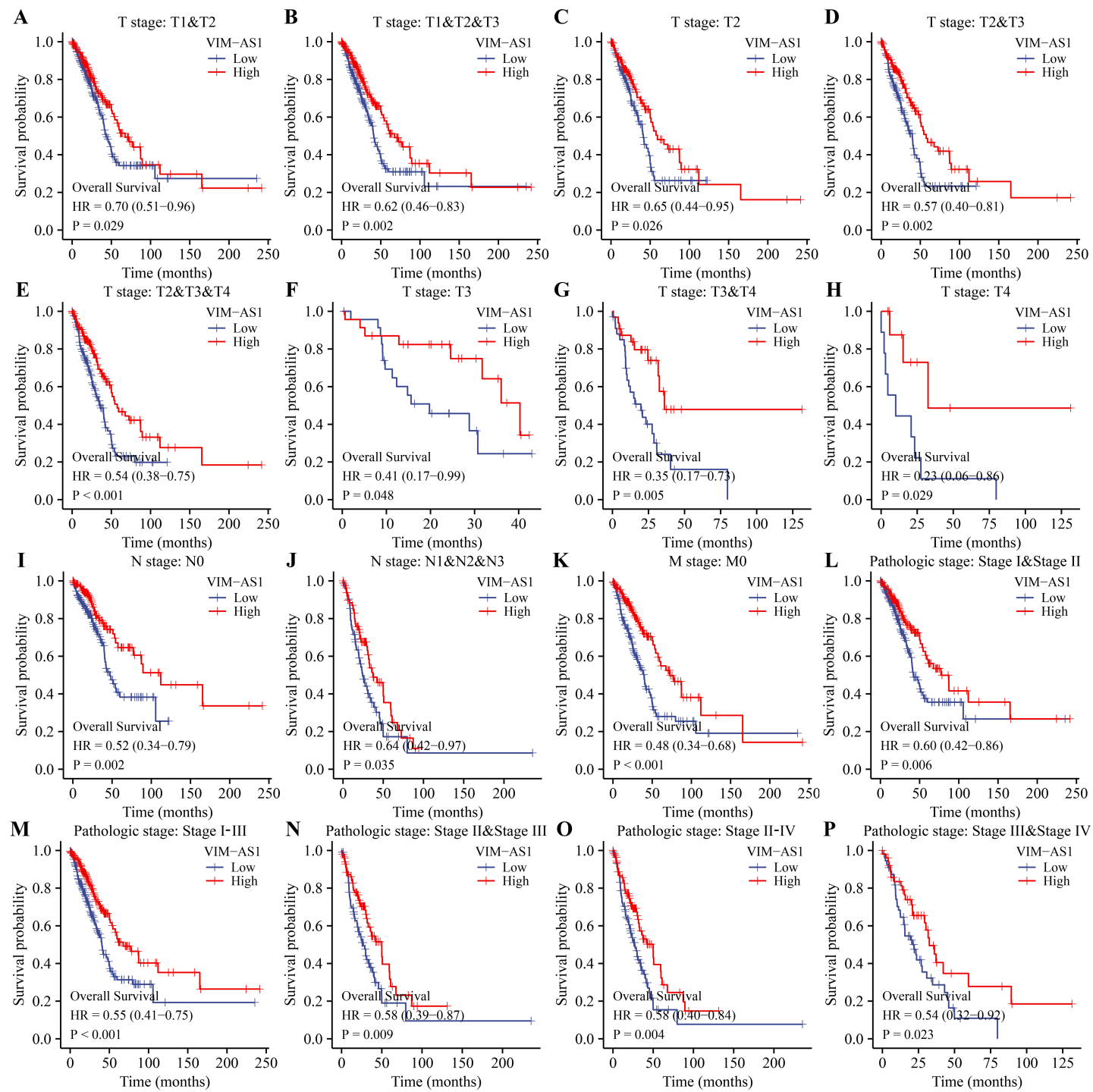


Figure S2

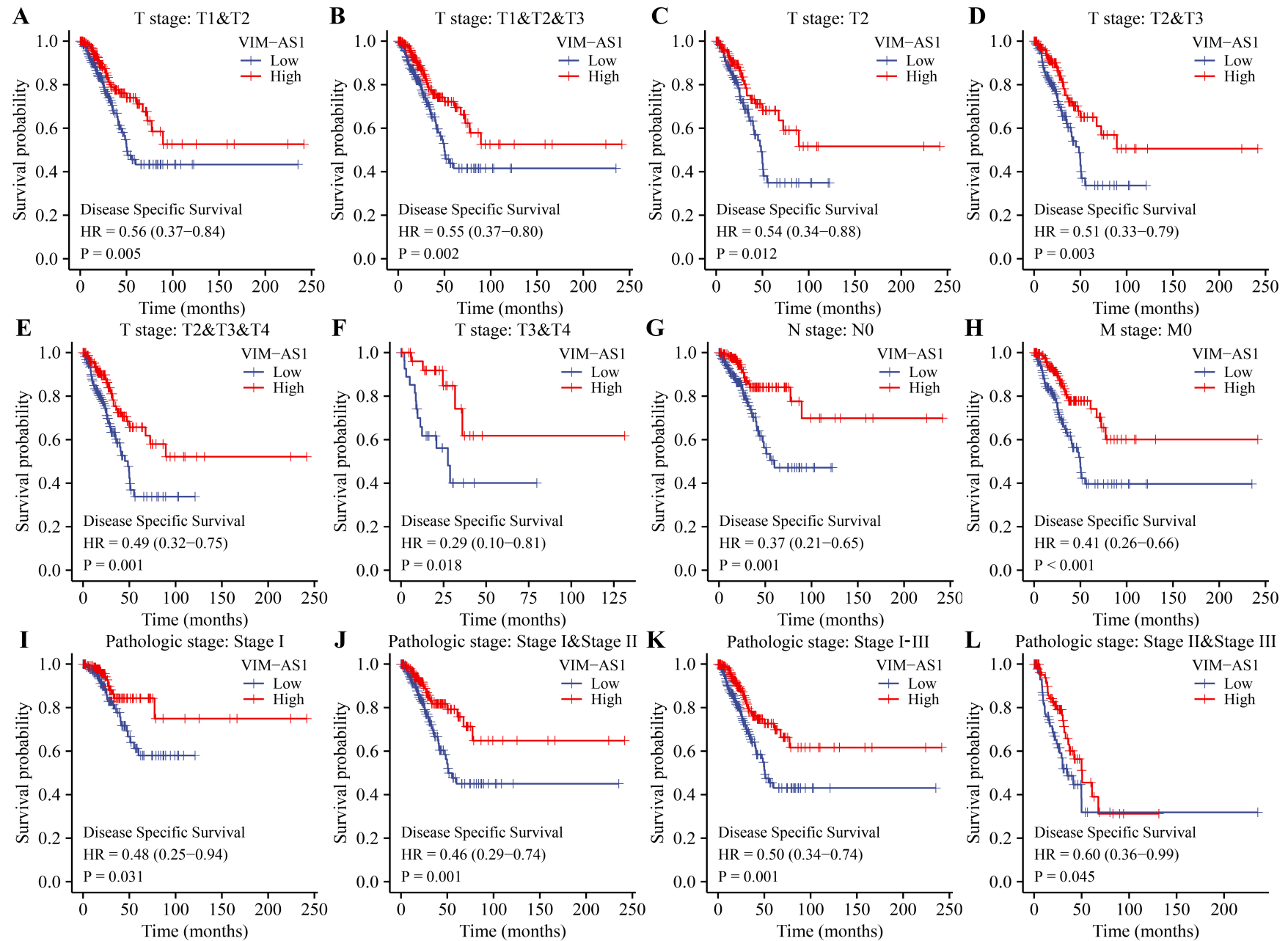


Figure S3

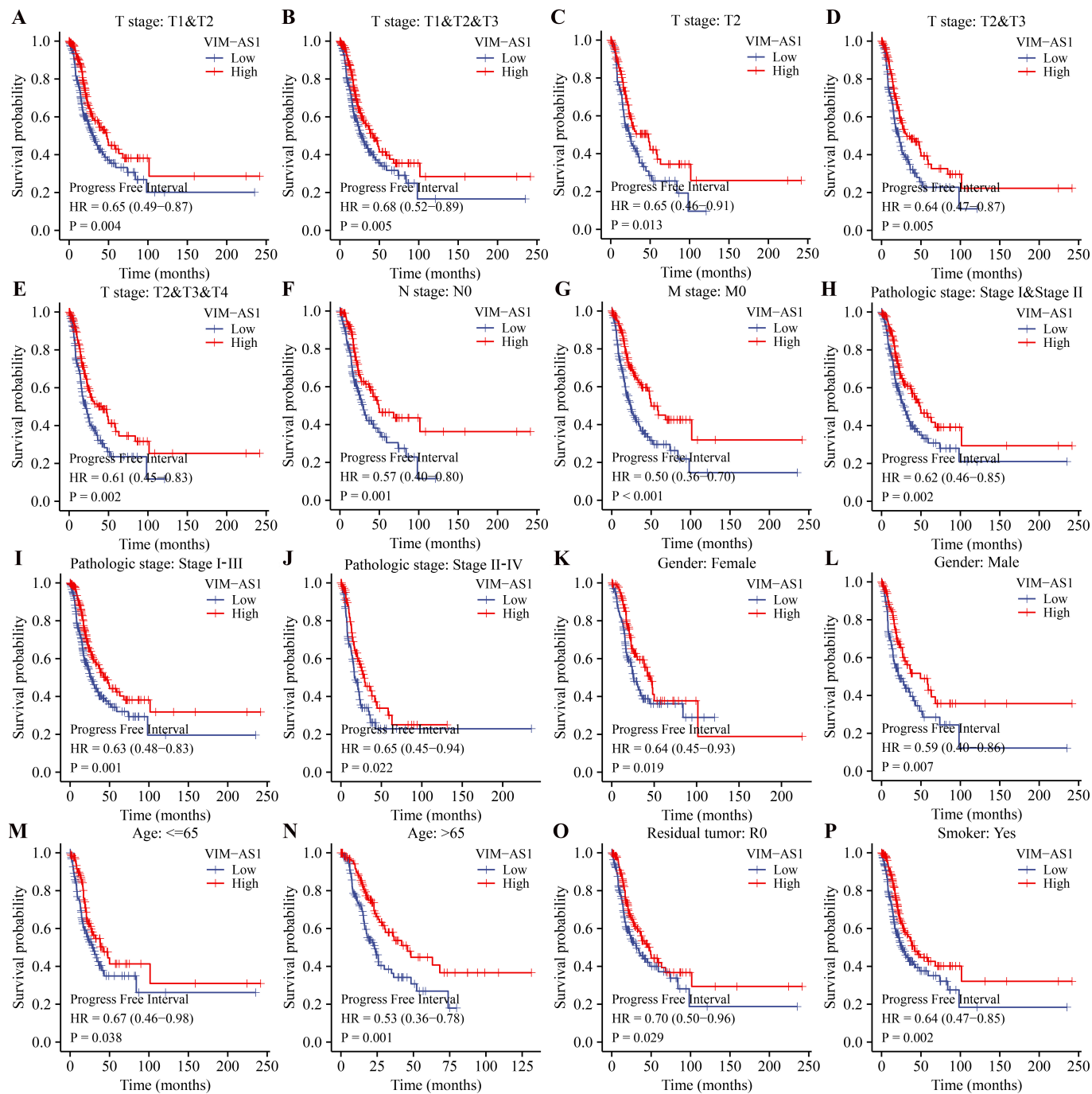


Table S1 Basic clinical information of the patients

Number	Age	sex(M/F)	Tumor location	Tumor type	Tumor size(cm)	Lymphatic metastasis(Y/N)	Stage	Grade
1#	41	F	right-up	Minimally invasive adenocarcinoma	1.4	N	T1a	Ia
2#	67	F	right-up	Lung Adenocarcinoma, acinar	1.7	N	T1a	Ia
3#	56	M	left-up	Lung Adenocarcinoma, acinar	3	N	T1b	Ia
4#	76	F	left-up	Lung Adenocarcinoma, papillary	1.9	N	T1a	Ia
5#	65	M	right-down	Lung Adenocarcinoma, papillary	4.6	Y	T2a	IIa
6#	68	M	right-up	Lung Adenocarcinoma, papillary	1.4	N	T1a	Ia
7#	59	M	right-up	Lung Adenocarcinoma, papillary	5.2	N	T2b	Ib
8#	72	M	left-up	Lung Adenocarcinoma, papillary	2.57	N	T1b	Ia
9#	69	F	right-down	Lung Adenocarcinoma, acinar	1.9	N	T1a	Ia
10#	50	F	right-medium	Lung Adenocarcinoma, papillary	2.5	N	T1b	Ia
11#	76	F	right-up	Lung Adenocarcinoma, papillary	2.6	N	T1b	Ia
12#	52	F	right-up	Lung Adenocarcinoma, acinar	1.6	N	T1a	Ia

TableS2 Table S2 VIM-AS1 co-expressed genes

Gene markers	<i>Cor</i>	<i>P</i>
HLA-DPB1	0.348	<0.001
HLA-DRA	0.347	<0.001
CCR7	0.337	<0.001
CD1C	0.337	<0.001
HLA-DPA1	0.335	<0.001
HLA-DQB2	0.319	<0.001
STAT4	0.318	<0.001
HLA-DQB1	0.309	<0.001
CD2	0.302	<0.001
CTLA4	0.302	<0.001
ITGAX	0.282	<0.001
CD19	0.273	<0.001
CD3E	0.261	<0.001
NRP1	0.255	<0.001
CD3D	0.243	<0.001
STAT5A	0.242	<0.001
IRF5	0.236	<0.001
TBX21	0.225	<0.001
CD8A	0.206	<0.001
BCL6	0.206	<0.001
CD86	0.205	<0.001
ITGAM	0.201	<0.001
HAVCR2	0.197	<0.001
TNF	0.196	<0.001
CSF1R	0.19	<0.001
IL13	0.184	<0.001
IFNG	0.174	<0.001
CCL2	0.173	<0.001
PDCD1 (PDCD1)	0.172	<0.001
IL10	0.171	<0.001
CD79A	0.17	<0.001
CCR8	0.17	<0.001
FOXP3	0.153	<0.001
IL21	0.145	<0.001
MS4A4A	0.131	0.002
CEACAM8	0.127	0.003
CD8B	0.121	0.005
LAG3	0.107	0.013
CD163	0.106	0.015
GATA3	0.092	0.034
HLA-DQB3	0.091	0.035

IL17A	0.088	0.043
VSIG4	0.086	0.046
STAT5B	0.085	0.05
STAT1	0.075	0.084
STAT6	0.071	0.102
GZMB	0.033	0.441
CD68	0.024	0.582
PTGS2	0.021	0.622
KIR2DS4	-0.027	0.526
KIR3DL1	-0.031	0.467
NOS2	-0.041	0.346
KIR3DL3	-0.05	0.252
KIR2DL4	-0.053	0.224
KIR2DL3	-0.056	0.199
KIR3DL2	-0.09	0.037
KIR2DL1	-0.119	0.006
STAT3	-0.13	0.003
