

Erratum

Zinc- α 2-glycoprotein 1 promotes EMT in colorectal cancer by filamin A mediated focal adhesion pathway: Erratum

Meiling Ji^{1*}, Wenxiang Li^{1*}, Guodong He^{1*}, Dexiang Zhu^{1*}, Shixu Lv², Wentao Tang¹, Mi Jian¹, Peng Zheng¹, Liangliang Yang¹, Zhipeng Qi³, Yihao Mao¹, Li Ren¹, Yunshi Zhong³, Yongjiu Tu⁴, Ye Wei¹✉, Jianmin Xu¹✉

1. Department of General Surgery, Zhongshan Hospital Fudan University, Shanghai, China
2. Department of Surgical Oncology, First Affiliated Hospital of Wenzhou Medical University, Wenzhou, China
3. Department of Endoscopic Center, Zhongshan Hospital Fudan University, Shanghai, China
4. Surgical Department, Hospital 174 of PLA, Xiamen, Fujian, China

* Meiling Ji, Wenxiang Li, Guodong He, Dexiang Zhu contributed equally to this work.

✉ Corresponding authors: Jianmin Xu, MD, PhD, No.180, Fenglin Road, Shanghai, China. Tel.: 02164041990-3449; E-mail: xujmin@aliyun.com. Ye Wei, MD, PhD, No.180, Fenglin Road, Shanghai, China. Tel.: 02164041990-2357; E-mail: wei.ye@zs-hospital.sh.cn

© The author(s). This is an open access article distributed under the terms of the Creative Commons Attribution License (<https://creativecommons.org/licenses/by/4.0/>). See <http://ivyspring.com/terms> for full terms and conditions.

Published: 2023.07.26

Corrected article: *J Cancer* 2019; 10(22): 5557-5566. doi: 10.7150/jca.35380.

In the initially published article, we recently realized that there are some mistakes in figures. It occurred while typesetting, but these results do not affect our main conclusion of the study. The corrections are provided below.

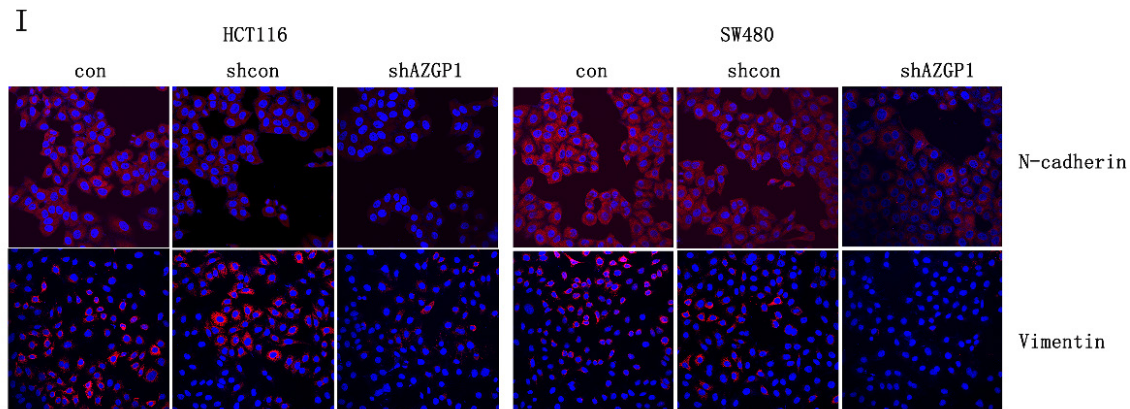


Figure 2. Corrected Figure 2I. (I) Representative immunofluorescence images of EMT markers N-cadherin and Vimentin.

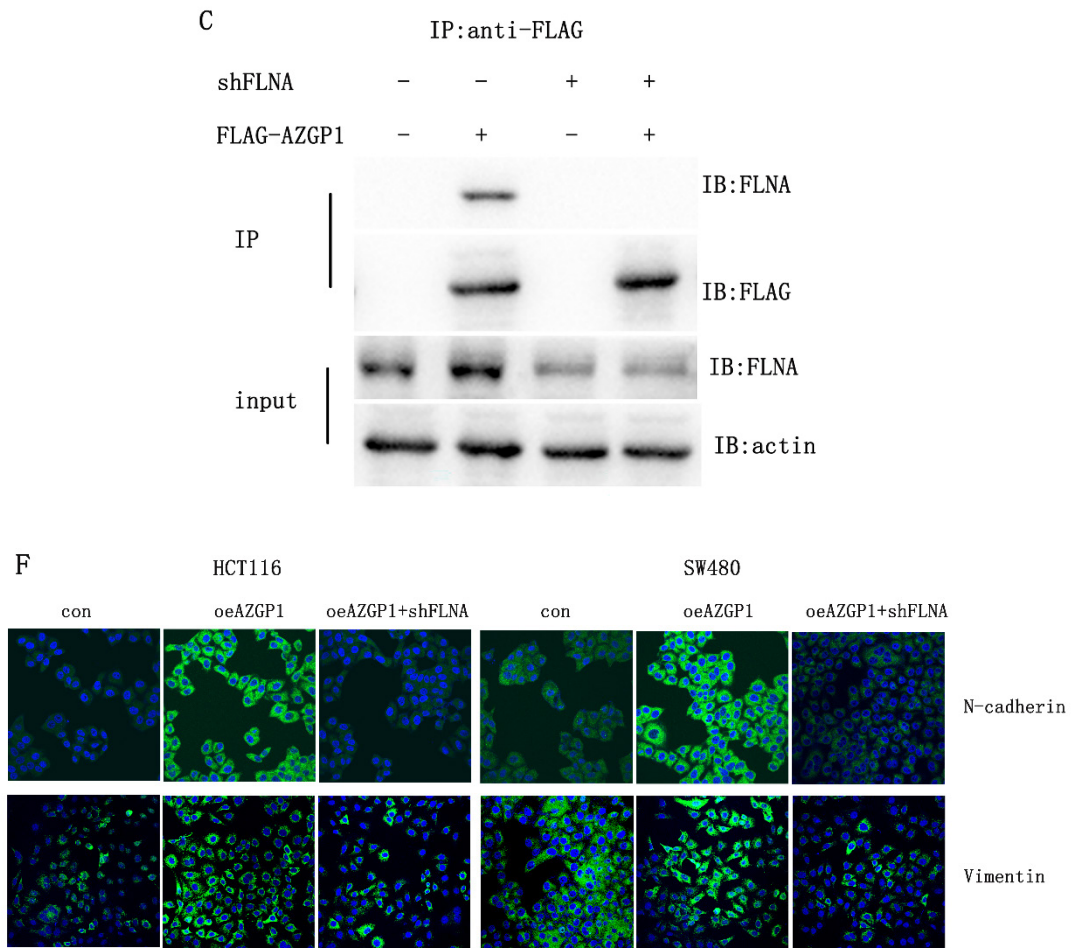


Figure 3. Corrected Figure 3C and 3F. (C) Co-immunoprecipitation of AZGP1 and FLNA was conducted in 293 cells. (F) Immunofluorescence staining of EMT markers in overexpressing AZGP1 (oeAZGP1) and knocking down FLNA.