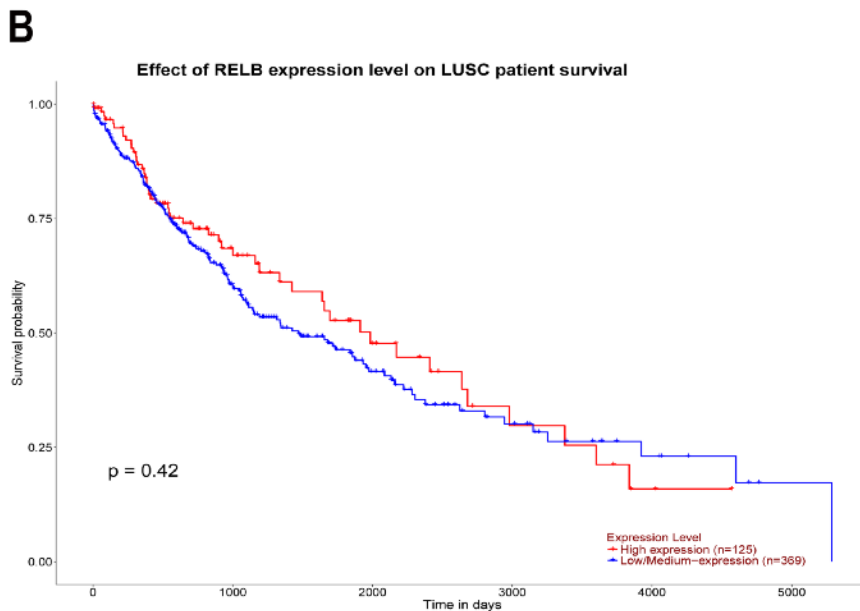
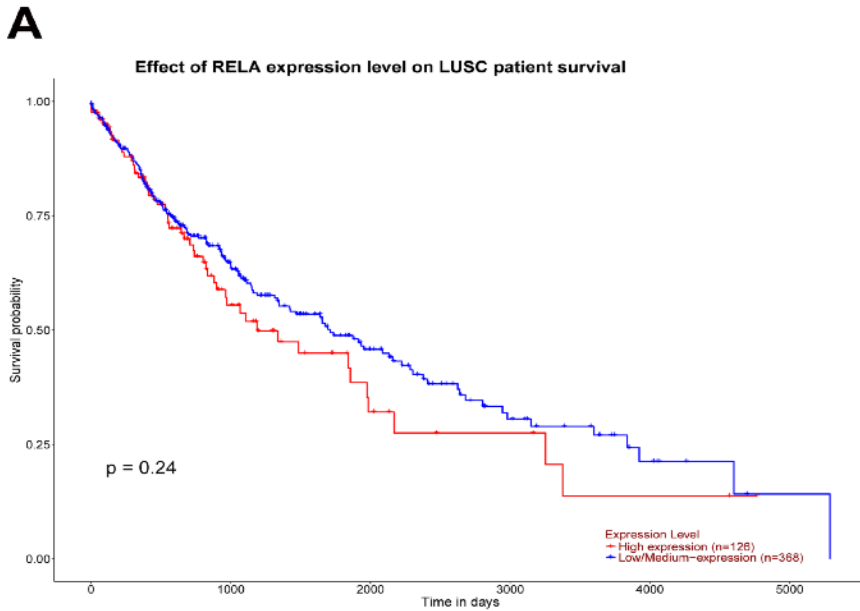


1 Supplementary Materials for

2 **c-Rel is a novel oncogene in lung squamous cell carcinoma regulating**
3 **cell proliferation and migration**

4



5

6 **Supplementary figure S1. c-Rel was identified in a screening for oncogenes amplified in LUSC. (A)**

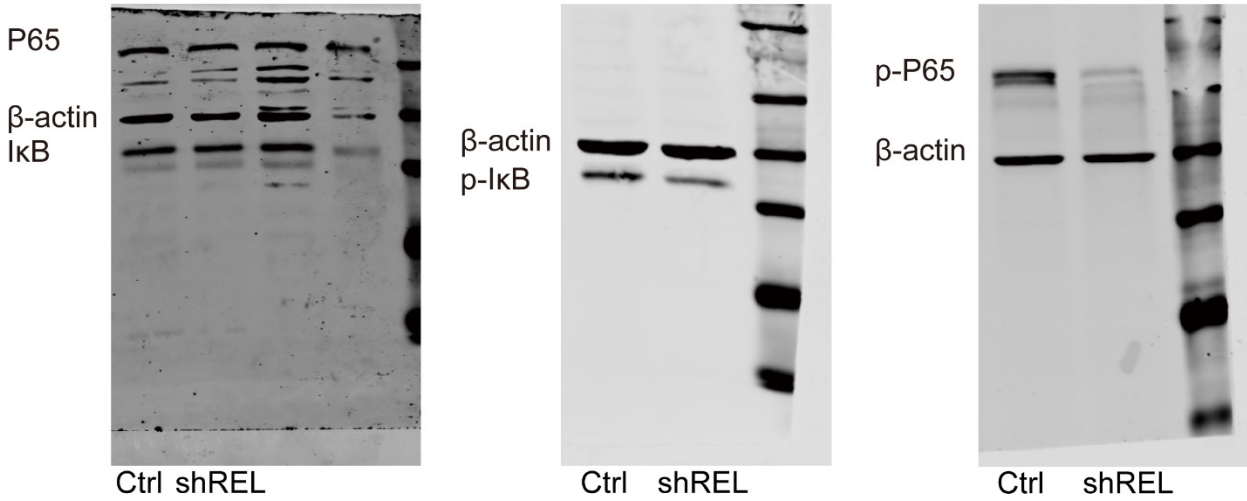
7 Comparative analysis of overall survival data derived from the TCGA database demonstrated no difference in

8 survival rates between patients with low and high RelA expression levels. (B) Comparative analysis of overall

9 survival data derived from the TCGA database demonstrated no difference in survival rates between patients
10 with low and high RelB expression levels.

11

A



12

13

14

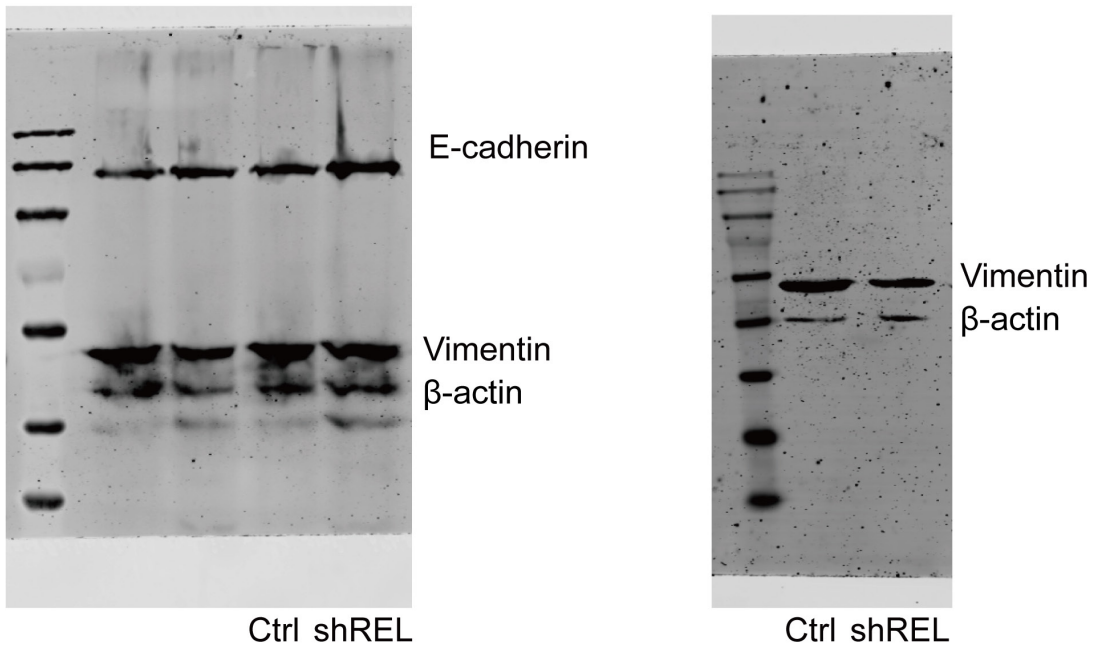
15

16

17

Supplementary figure S2. c-Rel regulates LUSC growth through activating NFκB pathway. (A) Original images of western blot for examining IκB, p- IκB, P65, and p-P65 protein level in NCI-H1703 cell upon c-Rel knockdown.

A



18

19

20

21

22

23

24

Supplementary figure S3. c-Rel promotes LUSC growth in vivo. (A) Original images of western blot for examining E-cadherin and vimentin protein level in the lungs of mice after injection of control and shREL LLC cells.

Supplementary table S1. Primers for Quantitative Real-time PCR.

Gene	Forward primer(5'-3')	Reverse primer(3'-5')	
<i>REL</i>	AGTTGCGGAGACCTTCTGACCA	CGTGATCCTGGCACAGTTTCTG	25
<i>RELA</i>	TGAACCGAAACTCTGGCAGCTG	CATCAGCTTGCGAAAAGGAGCC	26
<i>NFKB1A</i>	TCCACTCCATCCTGAAGGCTAC	CAAGGACACCAAAGCTCCACG	27
<i>IL6</i>	AGACAGCCACTCACCTCTTCAG	TTCTGCCAGTGCCTCTTTGCTG	28
<i>TNFA</i>	CTCTTCTGCCTGCTGCACTTTG	ATGGGCTACAGGCTTGTCACCTC	29
<i>ACTIN</i>	CACCATTGGCAATGAGCGGTTC	AGGTCTTTGCGGATGTCCACGT	30
			31
			32

33

34 **Supplementary table S2. 25 Tier 1 oncogenes were selected based on the Cancer Gene Census in**
35 **COSMIC database.**

SOX2	ETV5	FGFR1	PIK3CB	POLQ
PIK3CA	LPP	TERT	KAT6A	REL
TBL1XR1	TP63	CCND1	IKBKB	BCL11A
MECOM	BCL6	IL7R	EGFR	XPO1
MAP3K13	WWTR1	FOXL2	GATA2	CCNE1

36